



CROCHET | SKILL LEVEL: **EASY**

## ABBREVIATIONS

**Approx** =

Approximately

**Beg** = Beginning

**Ch** = Chain(s)

**Rem** = Remaining

**Rep** = Repeat

**Sc** = Single crochet

## MEASUREMENTS

Approx 7" x 10" [18 x 25.5 cm].

## GAUGE

12 sc and 13 rows = 4" [10 cm].

## INSTRUCTIONS

With MC, ch 22.

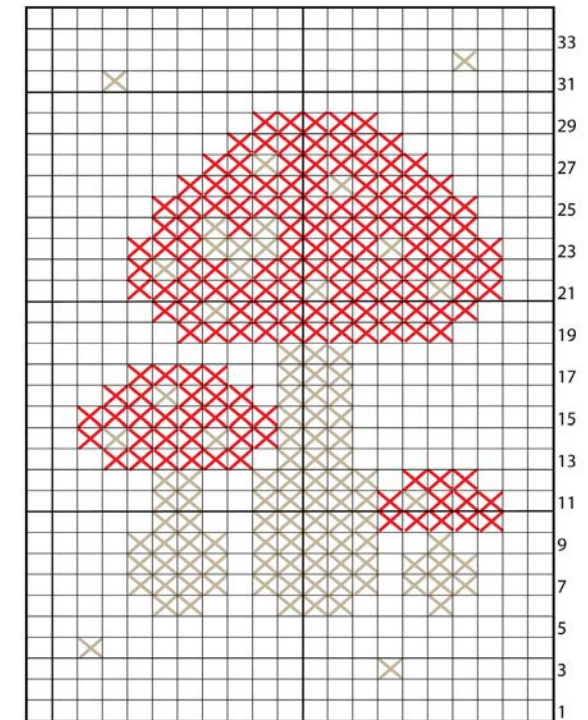
**1st row:** 1 sc in 2nd ch from hook. 1 sc in each ch to end of ch. Turn. 21 sc.

**2nd row:** Ch 1. 1 sc in each sc to end of row. Turn.

Rep 2nd row until 34 rows total worked.

Fasten off.

With A and B, cross stitch Mushroom motif following Chart. Each square of chart equals 1 single crochet.



☒ = Contrast A

☒ = Contrast B

## MATERIALS

**Red Heart® Super Saver®** (5 oz/141g; 236 yds/215 m)

**Main Color (MC)** Green Tones (0629) **1 ball or 59 yds/54 m**

**Red Heart® Super Saver®** (7 oz/198 g; 364 yds/333 m)

**Contrast A** Cherry Red (0319) **1 ball or 7.5 yds/7 m**

**Contrast B** Aran (0313) **1 ball or 7.5 yds/7 m**

Note: 1 ball each of MC, Contrast A and Contrast B will make 6 Blocks.

Size U.S. I/9 (5.5 mm) crochet hook **or size needed to obtain gauge.**  
Yarn needle.