



MATERIALS

Red Heart® Super Saver® (7 oz/198 g; 364 yds/333 m)

Contrast A Real Teal (656)

1 ball or 38 yds/35 m

Contrast B Buff (334)

1 ball or 24 yds/22 m

Note: 1 ball each of Contrast A and B will make 9 Blocks.

Size U.S. H/8 (5 mm) crochet hook **or size needed to obtain gauge.**
Yarn needle.



CROCHET | SKILL LEVEL: **EASY**

ABBREVIATIONS

Approx = Approximately

Beg = Beginning

Ch = Chain(s)

Cont = Continue(ity)

Dc = Double crochet

Dtr = (Yoh) 3 times and draw up a loop in next stitch. (Yoh and draw through 2 loops on hook) 4 times – double treble crochet made.

Pat = Pattern

Rem = Remain(ing)

Rep = Repeat

RS = Right side

Sc = Single crochet

Sp(s) = Space(s)

St(s) = Stitch(es)

WS = Wrong side

Yoh = Yarn over hook

MEASUREMENTS

Approx 7" x 9" [18 x 23 cm].

GAUGE

13 sc and 14 rows = 4" [10 cm].

INSTRUCTIONS

Notes:

- To join new color, work to last 2 loops on hook of previous color. Yoh with new color, draw through rem loops and proceed with new color.
- Carry colors when not in use loosely up side of work.
- Ch 3 at beg of rows counts as dc.

Blanket Block

With A, ch 23. See diagram on page 2.

Set-up row: (RS). With A, working into horizontal "bump" at back of each ch, 1 sc in 2nd ch from hook. 1 sc in each ch to end of chain. Turn. 22 sts.

1st row: (WS). With A, ch 3. 1 dc in each sc to end of row. Join B. Turn.

2nd row: With B, ch 1. 1 sc in each dc to end of row, working last sc in top of turning ch-3. Turn.

3rd row: Ch 1. 1 sc in each sc to end of row. Join A. Turn.

4th row: With A, ch 1. 1 sc in each of first 4 sc. *Ch 1. Skip next sc. 1 sc in each of next 2 sc. Ch 1. Skip next sc.** 1 sc in each of next 6 sc. Rep from * to ** once. 1 sc in each of last 4 sc. Turn.

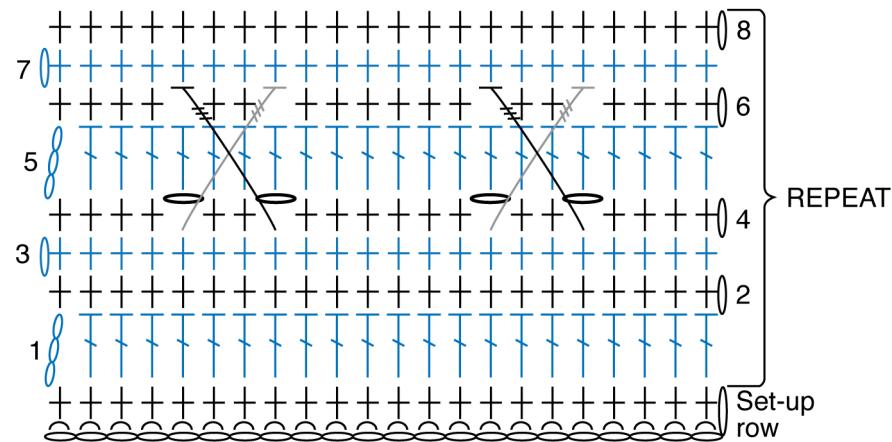
5th row: Ch 3. 1 dc in each of next 3 sc. *1 dc in next ch not ch-1 sp. 1 dc in each of next 2 sc. 1 dc in next ch not ch-1 sp.** 1 dc in each of next 6 sc. Rep from * to ** once. 1 dc in each of last 4 sc. Join B. Turn.

6th row: With B, ch 1. 1 sc in each of first 4 dc. *Working in front of ch-sp*, 1 dtr in 2nd skipped sc 3 rows below. Skip next dc. 1 sc in each of next 2 dc. *Working in front of ch-sp*, 1 dtr in 1st skipped sc 3 rows below. Skip next dc. 1 sc in each of next 6 dc. *Working in front of ch-sp*, 1 dtr in 4th skipped sc 3 rows below. Skip next dc. 1 sc in each of next 2 dc. *Working in front of ch-sp*, 1 dtr in 3rd skipped sc 3 rows below. Skip next dc. 1 sc in each of last 4 dc. Turn.

7th row: Ch 1. 1 sc in each st to end of row. Join A. Turn.

8th row: With A, ch 1. 1 sc in each sc to end of row. Turn. Last 8 rows form Pat.

Cont in Pat until work from beg measures approx 9" [23 cm], ending on 1st or 7th row of pat. Fasten off.



STITCH KEY

- = chain (ch)
- ◌ = worked in chain
- ⊥ = single crochet (sc)
- ⚡ = double treble crochet (dtr)
- ⌒ = worked in back bar of ch