



CROCHET | SKILL LEVEL: INTERMEDIATE

ABBREVIATIONS

Approx =	Hdc = Half double	Sc = Single crochet
Approximately	crochet	Sl st = Slip stitch
Beg = Beginning	PM = Place marker	Sp(s) = Space(s)
Ch = Chain(s)	Prev = Previous	St(s) = Stitch(es)
Cont = Continue	Rem = Remain(ing)(s)	Tog = Together
Dc = Double crochet	Rep = Repeat	Tr = Treble crochet
	Rnd(s) = Round(s)	Yoh = Yarn over hook

MEASUREMENTS

Approx 56" x 68" [142.5 x 172.5 cm].

GAUGE

12 dc and 7 rows = 4" [10 cm].

INSTRUCTIONS

Notes:

- Join all rnds with sl st to first st.
- Ch 3 at beg of rnd counts as dc.
- To change color, work to last loop on hook of prev color. Yoh with new color, draw through loop, tighten prev color and proceed with new color.

Solid Square Motif (make 31)

See diagram on page 5.

With A, ch 4.

1st rnd: (2 dc. Ch 2. [3 dc. Ch 2] 3 times) all in 4th ch from hook. Join with sl st to top of ch-3.

2nd rnd: Ch 3. 1 dc in next dc. *1 dc in each dc to ch-2 sp. (2 dc. Ch 2. 2 dc) all in ch-2 sp. Rep from * 3 times more. Join.

3rd rnd: Ch 3. 1 dc in next dc. *1 dc in each dc to ch-2 sp. (2 dc. Ch 2. 2 dc) all in ch-2 sp. Rep from * 3 times more. 1 dc in each of last 2 dc. Join.

4th rnd: Ch 3. 1 dc in next dc. *1 dc in each dc to ch-2 sp. (2 dc. Ch 2. 2 dc) all in ch-2 sp. Rep from * 3 times more. 1 dc in each of last 4 dc. Join.

MATERIALS

Red Heart® Super Saver® (7 oz/198 g; 364 yds/333 m)

Contrast A Denim (5851) **7 balls**

Contrast B Aran (0313) **2 balls**

Size U.S. I/9 (5.5 mm) crochet hook **or size needed to obtain gauge.**
Yarn needle. Stitch marker.

5th rnd: Ch 3. 1 dc in next dc. *1 dc in each dc to ch-2 sp. (2 dc. Ch 2. 2 dc) all in ch-2 sp. Rep from * 3 times more. 1 dc in each of last 6 dc. Join.

6th rnd: Ch 2 (**does not** count as hdc). *1 hdc in each dc to next ch-2 sp. (1 hdc. Ch 2. 1 hdc) all in next ch-2 sp. Rep from * 3 times more. 1 hdc in each of last 8 hdc. Join. Fasten off.

Distant Star Square Motif (make 10) See diagram on page 5.

With B, ch 4.

1st rnd: (2 dc. Ch 2. [3 dc. Ch 2] 3 times) all in 4th ch from hook. Break A. Join A with sl st to top of ch-3.

2nd rnd: With A, ch 3. *1 dc in each dc to next ch-2 sp. (2 dc. Ch 2. 2 dc) in next ch-2 sp. Rep from * 3 times more. Join.

3rd rnd: Ch 3. *1 dc in each dc to next ch-2 sp. (2 dc. Ch 2. 2 dc) in next ch-2 sp. Rep from * 3 times more. 1 dc in each of last 2 dc. Join.

4th rnd: Ch 3. *1 dc in each dc to next ch-2 sp. (2 dc. Ch 2. 2 dc) in next ch-2 sp. Rep from * 3 times more. 1 dc in each of last 4 dc. Join.

5th rnd: Ch 3. *1 dc in each dc to next ch-2 sp. (2 dc. Ch 2. 2 dc) in next ch-2 sp. Rep from * 3 times more. 1 dc in each of last 6 dc. Join.

6th rnd: Ch 2 (**does not** count as hdc). *1 hdc in each dc to next ch-2 sp. (1 hdc. Ch 2. 1 hdc) in next ch-2 sp. Rep from * 3 times more. 1 hdc in each of last 8 hdc. Join. Fasten off.

New Moon Motif (make 1)

See diagram on page 5.

With A, ch 4.

1st rnd: 11 dc in 4th ch from hook. Join with sl st to top of ch-3. 12 dc.

2nd rnd: Ch 3. 1 dc in same sp as last sl st. 2 dc in each dc around. Join. 24 dc.

3rd rnd: Ch 3. 2 dc in next dc. *1 dc in next dc. 2 dc in next dc. Rep from * around. Join. 36 dc.

4th rnd: Ch 3. 1 dc in next dc. 2 dc in next dc. *1 dc in each of next 2 dc. 2 dc in next dc. Rep from * around. Join. 48 dc.

5th rnd: Ch 3. 1 dc in each of next 2 dc. 2 dc in next dc. *1 dc in each of next 3 dc. 2 dc in next dc. Rep from * around. Break A. Join B. 60 dc.

6th rnd: With B, ch 1. *Working in front loops only*, 1 sc in each dc around. Break B. Join A.

7th rnd: With A, ch 1. *Working in back loops only of 5th rnd*, 1 sc in each of first 2 dc. 1 hdc in each of next 2 dc. 2 dc in next dc. 1 dc in next dc. 1 tr in next dc. *2 tr in next dc. Ch 2. 2 tr in next dc. 1 tr in next dc. 1 dc in next dc. 2 dc in next dc. 1 hdc in each of next 2 dc. 1 sc in each of next 3 dc. 1 hdc in next 2 dc. 2 dc in next dc. 1 dc in next dc. 1 tr in next dc. Rep from * 2 times more. 2 tr in next dc. Ch 2. 2 tr in next dc. 1 tr in next dc. 1 dc in next dc. 2 dc in next dc. 1 hdc in each of next 2 dc. 1 sc in last dc. Join.

8th rnd: Ch 2 (**does not** count as hdc). *1 hdc in each st to next ch-2 sp. (1 hdc. Ch 2. 1 hdc) in next ch-2 sp. Rep from * 3 times more. 1 hdc in each of last 9 sts. Join. Fasten off.

Full Moon Motif (make 1)

See diagram on page 5.

With B, ch 4.

1st rnd: 11 dc in 4th ch from hook. Join with sl st to top of ch-3. 12 dc.

2nd rnd: Ch 3. 1 dc in same sp as last sl st. 2 dc in each dc around. Join. 24 dc.

3rd rnd: Ch 3. 2 dc in next dc. *1 dc in next dc. 2 dc in next dc. Rep from * around. Join. 36 dc.

4th rnd: Ch 3. 1 dc in next dc. 2 dc in next dc. *1 dc in each of next 2 dc. 2 dc in next dc. Rep from * around. Join. 48 dc.

5th rnd: Ch 3. 1 dc in each of next 2 dc. 2 dc in next dc. *1 dc in each of next 3 dc. 2 dc in next dc. Rep from * around. Break B. Join with A. 60 dc.

6th rnd: With A, ch 1. *Working in back loops only*, 1 sc in each of first 2 dc. 1 hdc in each of next 2 dc. 2 dc in next dc. 1 dc in next dc. 1 tr in next dc. 1 tr in next dc. *2 tr in next dc. Ch 2. 2 tr in next dc. 1 tr in next dc. 1 dc in next dc. 2 dc in next dc. 1 hdc in each of next 2 dc. 1 sc in each of next 3 dc. 1 hdc in next 2 dc. 2 dc in next dc. 1 dc in next dc. 1 tr in next dc. Rep from * twice more. 2 tr in next dc. Ch 2. 2 tr in next dc. 1 tr in next dc. 1 dc in next dc. 2 dc in next dc. 1 hdc in each of next 2 dc. 1 sc in last dc. Join.

7th rnd: Ch 2 (**does not** count as hdc). *1 hdc in each st to next ch-2 sp. (1 hdc. Ch 2. 1 hdc) in next ch-2 sp. Rep from * 3 times more. 1 hdc in each of last 9 sts. Join. Fasten off.

Half Moon Motif (make 2 alike)

See diagram on page 6.

Note: Carry color not in use across top of prev rnd and work sts around it.

With B, ch 4.

1st rnd: With B, 5 dc in 4th ch from hook. Join A. With A, 6 dc in same ch as prev sts. Join B with sl st to top of ch-3. 12 dc.

2nd rnd: With B, ch 3. 1 dc in same sp as last sl st. 2 dc in each of next 5 dc. With A, 2 dc in each of next 6 dc. Join with B. 24 dc.

3rd rnd: With B, ch 3. 2 dc in next dc. (1 dc in next dc. 2 dc in next dc.) 5 times. With A, (1 dc in next dc. 2 dc in next dc) 6 times. Join with B. 36 dc.

4th rnd: With B, ch 3. 1 dc in next dc. 2 dc in next dc. (1 dc in each of next 2 dc. 2 dc in next dc) 5 times. With A, (1 dc in each of next 2 dc. 2 dc in next dc) 6 times. Join with B. 48 dc.

5th rnd: With B, ch 3. 1 dc in each of next 2 dc. 2 dc in next dc. (1 dc in each of next 3 dc. 2 dc in next dc.) 5 times. With A, (1 dc in each of next 3 dc. 2 dc in next dc.) 6 times. Break B. Join A. 60 dc.

6th rnd: With A, ch 1. *Working in back loops only*, 1 sc in each of first 2 dc. 1 hdc in each of next 2 dc. 2 dc in next dc. 1 dc in next dc. 1 tr in next dc. *2 tr in next dc. Ch 2. 2 tr in next dc. 1 tr in next dc. 1 dc in next dc. 2 dc in next dc. 1 hdc in each of next 2 dc. 1 sc in each of next 3 dc. 1 hdc in next 2 dc. 2 dc in next dc. 1 dc in next dc. 1 tr in next dc. Rep from * twice more. 2 tr in next dc. Ch 2. 2 tr in next dc. 1 tr in next dc. 1 dc in next dc. 2 dc in next dc. 1 hdc in each of next 2 dc. 1 sc in last dc. Join.

7th rnd: Ch 2 (**does not** count as hdc). *1 hdc in each st to next ch-2 sp. (1 hdc. Ch 2. 1 hdc) in next ch-2 sp. Rep from * 3 times more. 1 hdc in each of last 9 sts. Join. Fasten off.

Waxing and Waning Crescent Moon (make 2)

See diagram on page 6.

Note: Ch 2 at beg of rnd **does not** count as hdc.

With A, ch 4.

1st rnd: 11 dc in 4th ch from hook. Join with sl st to top of ch-3. 12 dc.

2nd rnd: Ch 2. 2 hdc in each of first 6 dc. 2 dc in each of last 6 dc. Join. 24 sts.

3rd rnd: Ch 2. (1 hdc in next hdc. 2 hdc in next hdc) 6 times. (1 dc in next dc. 2 dc in next dc) 6 times. Join. 36 sts.

4th rnd: Ch 2. (1 hdc in each of next 2 hdc. 2 hdc in next hdc) 6 times. (1 dc in each of next 2 dc. 2 dc in next dc) 6 times. Join. 48 sts.

5th rnd: Ch 2. 1 hdc in next hdc. 1 sc in each of next 2 hdc. 2 hdc in next hdc. (1 sc in each of next 3 hdc. 2 sc in next hdc) 4 times. 1 sc in each of next 3 hdc. (1 sc. 1 hdc) in next hdc. (1 dc in each of next 3 dc. 2 dc in next dc) 6 times. Break A. Join with B.

6th row: With B, ch 1. 1 sc in first hdc. PM on sc. 1 hdc in next sc. 1 dc in each of next 26 sc. 1 hdc in next sc. 1 sc in next hdc. **Do not** join. Fasten off.

7th rnd: Join A with sl st to marked sc. Remove marker. Ch 1. *Working in back loops only*, 1 sc in same st as sl st. 1 sc in next hdc. 1 hdc in each of next 2 sts. 2 dc in next st. 1 dc in next st. 1 tr in next st. *2 tr in next st. Ch 2. 2 tr in next st. 1 tr in next st. 1 dc in next st. 2 dc in next st. 1 hdc in each of next 2 sts. 1 sc in each of next 3 sts. 1 hdc in each of next 2 sts.

2 dc in next st. 1 dc in next st. 1 tr in next st. Rep from * twice more. 2 tr in next st. Ch 2. 2 tr in next st. 1 tr in next st. 1 dc in next st. 2 dc in next st. 1 hdc in each of next 2 sts. 1 sc in last st. Join.

8th rnd: Ch 2 (**does not** count as hdc). *1 hdc in each st to next ch-2 sp. (1 hdc. Ch 2. 1 hdc) in next ch-2 sp. Rep from * 3 times more. 1 hdc in each of last 9 sts. Join. Fasten off.

Waxing and Waning Gibbous Moon (make 2)

See diagram on page 5.

Note: Ch 2 at beg of rnd **does not** count as hdc.

With B, ch 4.

1st rnd: 11 dc in 4th ch from hook. Join with sl st to top of ch-3. 12 dc.

2nd rnd: Ch 2. 2 hdc in each of first 6 dc. 2 dc in each of last 6 dc. 24 sts.

3rd rnd: Ch 2. (1 hdc in next hdc. 2 hdc in next hdc) 6 times. (1 dc in next dc. 2 dc in next dc) 6 times. Join. 36 sts.

4th rnd: Ch 2. (1 hdc in each of next 2 hdc. 2 hdc in next hdc) 6 times. (1 dc in each of next 2 dc. 2 dc in next dc) 6 times. Join. 48 sts.

5th rnd: Ch 2. 1 hdc in next hdc. 1 sc in each of next 2 hdc. 2 hdc in next hdc. (1 sc in each of next 3 hdc. 2 sc in next hdc) 4 times. 1 sc in each of next 3 hdc. (1 sc. 1 hdc) in next hdc. (1 dc in each of next 3 dc. 2 dc in next dc) 6 times. Break B. Join with A.

6th row: With A, ch 1. 1 sc in first hdc. PM on sc. 1 hdc in next sc. 1 dc in each of next 26 sc. 1 hdc in next sc. 1 sc in next hdc. **Do not** join. Fasten off.

7th rnd: Re-join A with sl st to marked sc. Remove marker. Ch 1. *Working in back loops only*, 1 sc in same st as sl st. 1 sc in next hdc. 1 hdc in each of next 2 sts. 2 dc in next st. 1 dc in next st. 1 tr in next st. *2 tr in next st. Ch 2. 2 tr in next st. 1 tr in next st. 1 dc in next st. 2 dc in next st. 1 hdc in each of next 2 sts. 1 sc in each of next 3 sts. 1 hdc in each of next 2 sts. 2 dc in next st. 1 dc in next st. 1 tr in next st. Rep from * twice more. 2 tr in next st. Ch 2. 2 tr in next st. 1 tr in next st. 1 dc in next st. 2 dc in next st. 1 hdc in each of next 2 sts. 1 sc in last st. Join.

8th rnd: Ch 2 (**does not** count as hdc). *1 hdc in each st to next ch-2 sp. (1 hdc. Ch 2. 1 hdc) in next ch-2 sp. Rep from * 3 times more. 1 hdc in each of last 9 sts. Join. Fasten off.

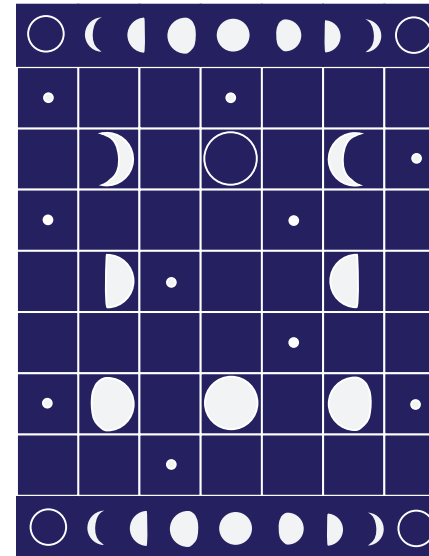
Top and Bottom Border (make 2)
With A, ch 19.

Work Chart (see page 7), noting each square of chart is equal to 1 sc and *reading RS rows from right to left and WS rows from left to right*. Carry color not in use across top of entire prev row and work sts around it. This will ensure even gauge as all sts will be worked around an extra strand of yarn held across top of prev row. Carry both colors up side of work.

1st row: (RS). 1 sc in 2nd ch from hook. 1 sc in each ch to end of chain. Turn. 18 sc.

2nd row: Ch 1. 1 sc in each sc to end of row. Turn.
First 2 rows of Chart are complete. Rep 2nd row and cont working Chart until 210th row of chart is complete. Fasten off.

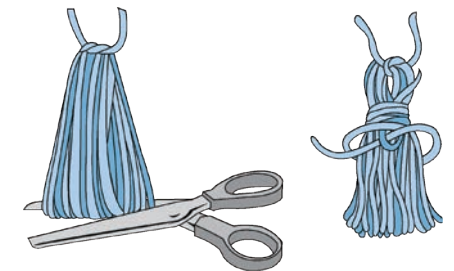
Assembly: Using Assembly Diagram, sew Motifs and Top and Bottom Borders tog using A.



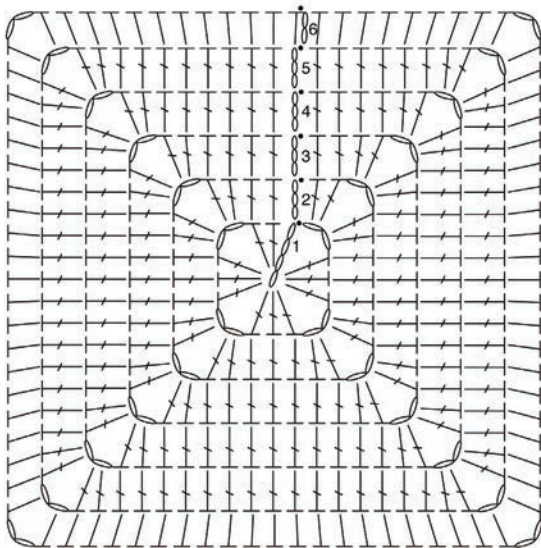
ASSEMBLY DIAGRAM

Tassels (make 4)

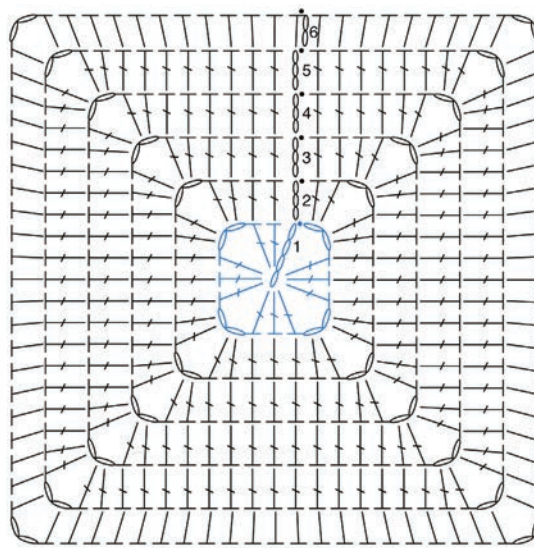
Cut a piece of cardboard 6" [15 cm] wide. Wind B around cardboard 120 times. Break yarn leaving a long end and thread end through needle. Slip needle through all loops and tie tightly. Remove cardboard and wind yarn tightly around loops 1" [2.5 cm] below fold. Fasten securely. Cut through rem loops and trim ends evenly. Sew a Tassel to each corner as seen in photo.



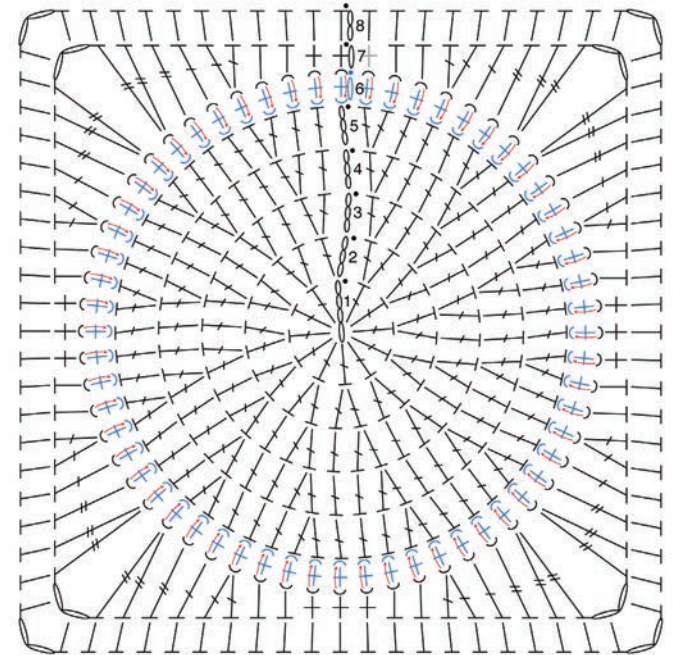
TASSELS



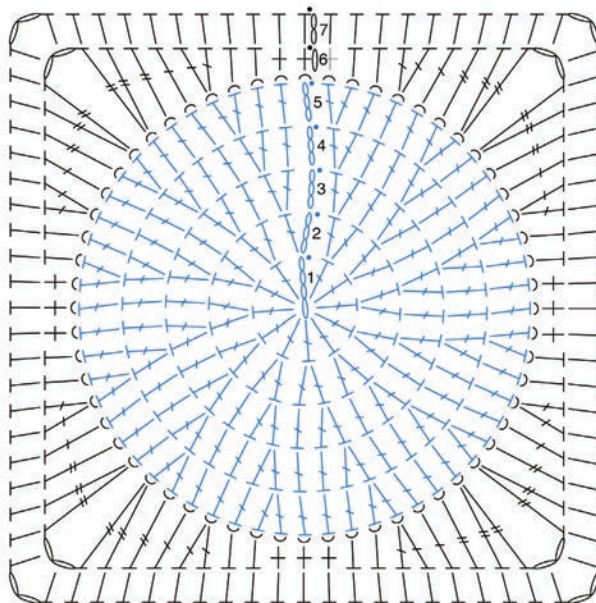
SOLID SQUARE MOTIF



DISTANT STAR SQUARE MOTIF



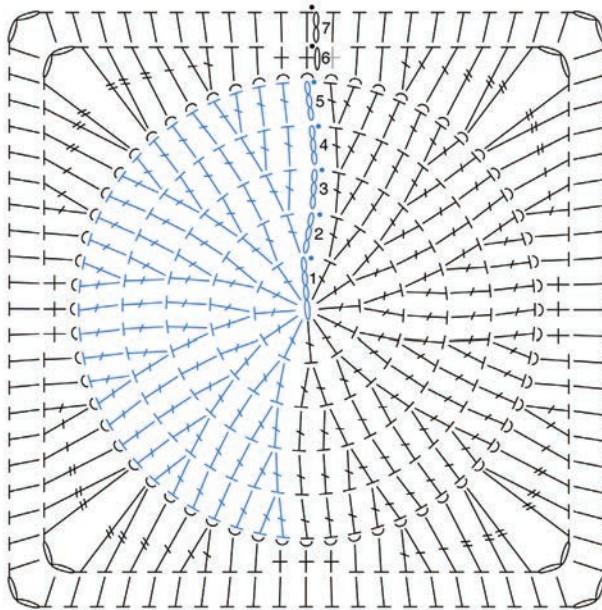
NEW MOON MOTIF



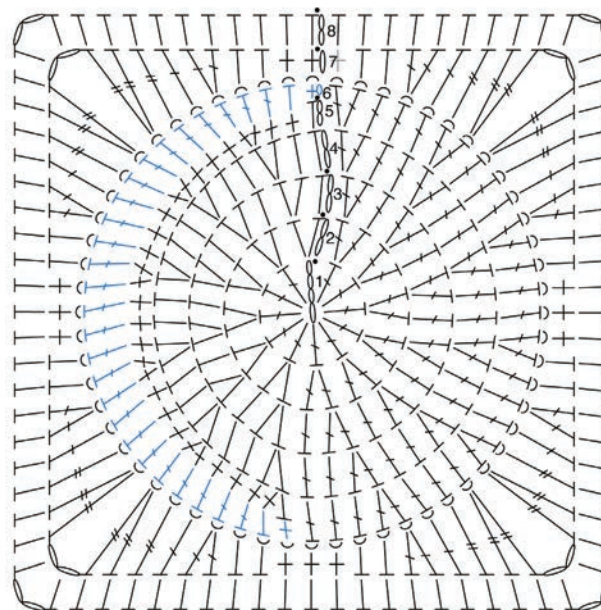
FULL MOON MOTIF

STITCH KEY

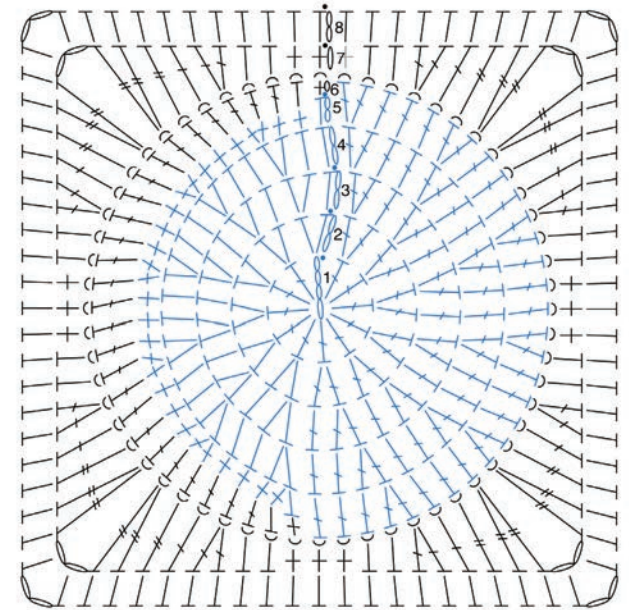
- = chain (ch)
- = slip stitch (sl st)
- ⊥ = single crochet (sc)
- ⊥ = half double crochet (hdc)
- ⊥ = double crochet (dc)
- ⊥ = treble crochet (tr)
- ⊂ = work in back loop
- ⊃ = work in front loop



HALF MOON MOTIF



WAXING AND WANING CRESCENT MOON MOTIF



WAXING AND WANING GIBBOUS MOON MOTIF

STITCH KEY

- = chain (ch)
- = slip stitch (sl st)
- ⊥ = single crochet (sc)
- ┌ = half double crochet (hdc)
- └ = double crochet (dc)
- ┘ = treble crochet (tr)
- ⌒ = work in back loop
- ⌒ = work in front loop

Key
 ■ = Contrast A
 □ = Contrast B

