



CROCHET | SKILL LEVEL: INTERMEDIATE

ABBREVIATIONS

Approx = Approximately

Beg = Beginning

Ch = Chain(s)

Dc = Double crochet

Hdcfp = Yoh and draw up a loop around post of next stitch at front of work, inserting hook from right to left. Yoh and draw through all loops on hook

Hdc = Half double crochet

Mosaic Dc = Working in *front* of chain spaces, work 1 dc in skipped sc 3 rows below

Pat = Pattern

Rem = Remaining

Rep = Repeat

RS = Right side

Sc = Single crochet

Sl st = Slip stitch

Sp(s) = Space(s)

St(s) = Stitch(es)

Tog = Together

Yoh = Yarn over hook

MEASUREMENTS

Approx 50" x 60" [127 x 152.5 cm], excluding fringe

GAUGE

12 sc and 15 rows = 4" [10 cm]

INSTRUCTIONS

Notes:

- To change color, work to last loop on hook of previous color. Yoh with new color, draw through loop, tighten previous color and proceed with new color.
- Carry color when not in use loosely up side of work unless otherwise stated.
- Each skipped sc has ch-1 worked above it for 2 rows. This establishes the 'gap' where Mosaic Dc will later be worked.

MATERIALS

Red Heart® Super Saver® (7 oz/198 g; 364 yds/333 m)

Contrast A Oatmeal (0326) **3 balls or 805 yds/730 m**

Contrast B Grey Heather (0400) **3 balls or 780 yds/710 m**

Contrast C Charcoal (3950) **4 balls or 1295 yds/1175 m**

Size U.S. I/9 (5.5 mm) crochet hook **or size needed to obtain gauge.**
Yarn needle.

- Mosaic Dc always replaces sc directly behind it on working row
- WS of your work maintains alternating 2-row striped pattern because you are working in front of chain spaces each time you work Mosaic Dc - you are never working around chain-spaces. The chain-spaces are positioned behind Mosaic Dc.
- Ch 3 at beg of row counts as dc.
- Ch 2 at beg of row **does not** count as stitch.

With C, ch 151 (multiple of 12 ch + 7).

Foundation row: (WS). 1 sc in 2nd ch from hook and each ch to end of chain. Turn. 150 sc.

**Proceed in Stripe Pat as follows:

1st row: (RS). With C, ch 3. 1 dc in each sc to end of row. Turn.

2nd row: Ch 1. 1 sc in each dc to end of row. Turn.

3rd and 4th rows: As 1st and 2nd rows.

5th and 6th rows: With B, as 1st and 2nd rows.

Rep 1st to 6th rows once more.

Next row: (RS). With C, ch 2. 1 hdc in each sc to end of row. Turn.

Next row: Ch 1. 1 sc in first hdc. 1 hdcfp around each st to last hdc. 1 sc in last hdc.

Next 2 rows: Ch 1. 1 sc in each of first 2 sts. *1 sc in each of next 6 sc. Ch 2. Skip next 2 sc. 1 sc in each of next 4 sc. Rep from * to last 4 sts. 1 sc in each of last 4 sc. Turn. Join A.

Proceed in Mosaic Pat as follows:
See diagram on page 3.

1st row: (RS). With A, ch 1. 1 sc in each of first 2 sc. *1 sc in each of next 4 sc. Ch 2. Skip next 2 sc. Mosaic Dc in each of next 2 skipped sc 3 rows below. Ch 2. Skip next 2 sc. 1 sc in each of next 2 sc. Rep from * to last 4 sts. 1 sc in each of last 4 sc. Turn.

2nd row: Ch 1. 1 sc in each of first 2 sc. *1 sc in each of next 4 sc. Ch 2. Skip next 2 ch. 1 sc in each of next 2 dc. Ch 2. Skip next 2 ch. 1 sc in each of next 2 sc. Rep from * to last 4 sts. 1 sc in each of last 4 sc. Turn.

3rd row: With C, ch 1. 1 sc in each of first 2 sc. *1 sc in each of next 2 sc. Ch 2. Skip next 2 sc. Mosaic Dc in each of next 2 skipped sc 3 rows below. 1 sc in each of next 2 sc. Mosaic Dc in each of next 2 skipped sc 3 rows below. Ch 2. Skip next 2 sc. Rep from * to last 4 sts. 1 sc in each of last 4 sc. Turn.

4th row: Ch 1. 1 sc in each of first 2 sc. *1 sc in each of next 2 sc. Ch 2. Skip next 2 ch. 1 sc in each of next 6 sts. Ch 2. Skip next 2 ch. Rep from * to last 4 sts. 1 sc in each of last 4 sc. Turn.

5th row: With A, ch 1. 1 sc in each of first 2 sc. *Ch 2. Skip next 2 sc. Mosaic Dc in each of next 2 skipped sc 3 rows below. 1 sc in each of next 6 sc. Mosaic Dc in each of next 2 skipped sc 3 rows below. Rep from * to last 4 sc. Ch 2. Skip next 2 sc. 1 sc in each of last 2 sc. Turn.

6th row: Ch 1. 1 sc in each of first 2 sc. *Ch 2. Skip next 2 ch. 1 sc in each of next 10 sts. Rep from * to last 4 sts. Ch 2. Skip next 2 ch. 1 sc in each of last 2 sc. Turn.

7th row: With C, ch 1. 1 sc in each of first 2 sc. *Mosaic Dc in each of next 2 skipped sc 3 rows below. 1 sc in each of next 4 sc. Ch 2. Skip next 2 sc. 1 sc in each of next 4 sc. Rep from * to last 4 sts. Mosaic Dc in each of next 2 skipped sc 3 rows below. 1 sc in each of last 2 sc. Turn.

8th row: Ch 1. 1 sc in each of first 2 sc. *1 sc in each of next 6 sts. Ch 2. Skip next 2 ch. 1 sc in each of next 4 sc. Rep from * to last 4 sts. 1 sc in each of last 4 sts. Turn.

Rep these 8 rows for Mosaic Pat 3 times more.

Proceed as follows:

1st row: (RS). With A, ch 1. 1 sc in each of first 2 sc. *1 sc in each of next 6 sc. Mosaic Dc in each of next 2 skipped sc 3 rows below. 1 sc in each of next 4 sc. Rep from * to last 4 sts. 1 sc in each of last 4 sc. Turn.

2nd row: Ch 1. 1 sc in each st to end of row. Turn. Join B.

3rd row: (RS). With B, ch 2. 1 hdc in each sc to end of row. Turn.

4th row: Ch 1. 1 sc in first hdc. 1 hdcfp around each st to last hdc. 1 sc in last hdc. Turn.

Proceed in Stripe Pat as follows:

1st row: With B, ch 3. 1 dc in each st to end of row. Turn.

2nd row: Ch 1. 1 sc in each dc to end of row. Turn.

3rd and 4th rows: With C, as 1st and 2nd rows.

5th to 8th rows: With B, as 1st and 2nd rows twice.

9th and 10th rows: With C, as 1st and 2nd rows.

11th and 12th rows: With B, as 1st and 2nd rows.**

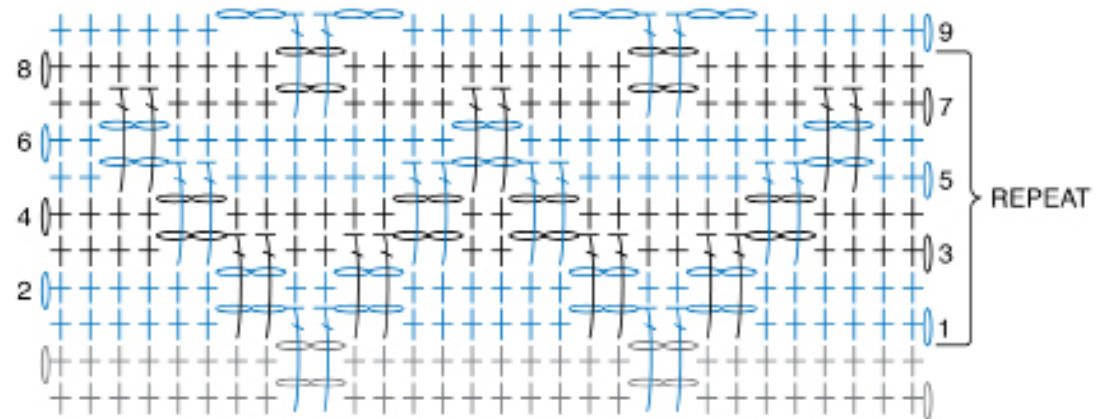
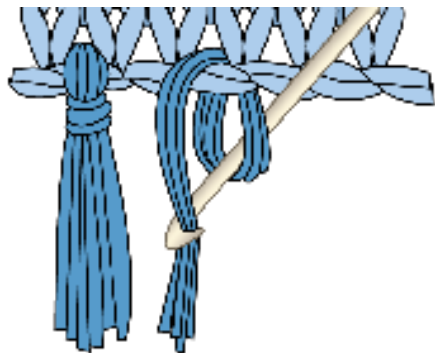
Rep from ** to ** twice more, substituting C for A at end of Mosaic Pat at center section. Fasten off.

FINISHING

Pin Blanket to measurements on a flat surface. Cover with a damp cloth leaving cloth to dry.

Side edging: With RS facing, join C with sl st to top left corner. Work 1 row of sc evenly across side edge of Blanket. Fasten off. Rep for other side.

Fringe: Cut strands of A, B and C 16" [40.5 cm] long. Taking 1 strand each of A, B and C tog, fold in half and knot into fringe across both ends of Blanket. Trim fringe evenly.



REDUCED SAMPLE OF PATTERN

STITCH KEY

- = chain (ch)
- + = single crochet (sc)
- ⌋ = double crochet (dc)

