



Tamara Kelly
from Moogly Blog



CROCHET | SKILL LEVEL: EASY

ABBREVIATIONS

Approx = Approximately

Beg = Beginning

Ch = Chain(s)

Dc = Double crochet

Fdc (Foundation double crochet) = Ch 3 (counts as first st).

Yoh. Insert hook in 3rd ch from hook and draw up a loop. Yoh and draw through one loop on hook (ch made). (Yoh and draw through 2 loops on hook) twice (1 dc made). *Yoh. Insert hook into

ch stitch and draw up a loop. Yoh and draw through one loop on hook (ch made). (Yoh and draw through 2 loops on hook) twice (1 dc made). Rep from * for as many fdc as called for in pattern.

Pat = Pattern

Rep = Repeat

Sp(s) = Space(s)

St(s) = Stitch(es)

Yoh = Yarn over hook

MATERIALS

Red Heart® Fleece Hugs™ (7 oz/200 g; 415 yds/380 m)

Elephant (7020)

1 ball

Size U.S. K/10½ (6.5 mm) crochet hook **or size needed to obtain gauge.** Yarn needle.

MEASUREMENTS

Approx 35" [89 cm] wide x 33" [84 cm] long.

GAUGE

10 sts and 6 rows = 4" [10 cm] in pat.

INSTRUCTIONS

Note: Ch 3 at beg of row counts as dc.

1st row: Fdc 87. Turn. 87 dc. (see Chart on page 2).

2nd row: Ch 3. 1 dc in each of next 2 sts. *Skip next st. (1 dc. Ch 1. 1 dc.) all in next st. Skip next st. 1 dc in each of next 3 sts Rep from * to end of row. Turn.

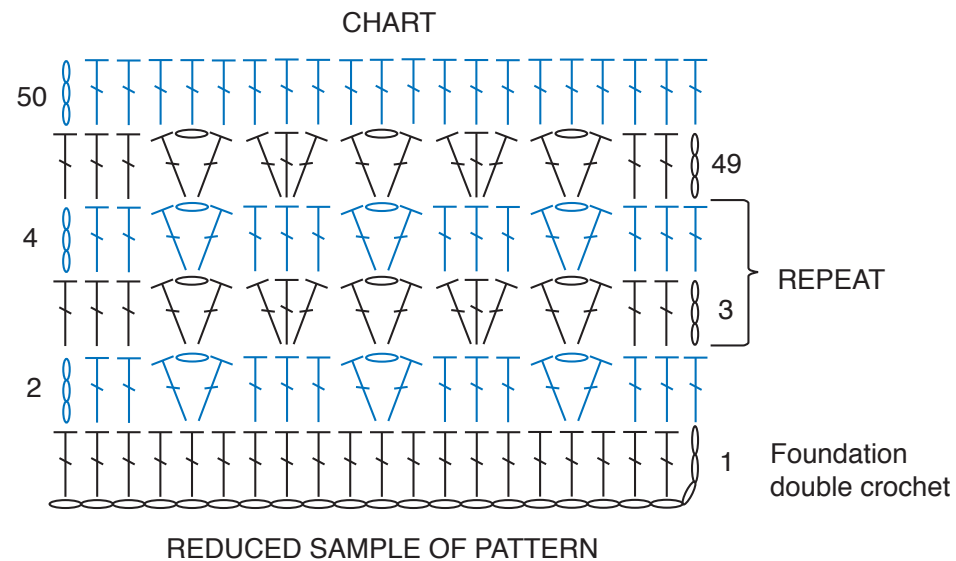
3rd row: Ch 3. 1 dc in each of next 2 sts. Skip next st. *(1 dc. Ch 1. 1 dc.) all in next ch-1 sp. Skip next 2 sts. 3 dc in next st.** Skip next 2 sts. Rep from * finishing last rep at **. Skip next st. 1 dc in each of last 3 sts. Turn.

4th row: Ch 3. 1 dc in each of next 2 sts. *Skip next st. (1 dc. Ch 1. 1 dc.) all in next ch-1 sp. Skip next st. 1 dc in each of next 3 sts. Rep from * to end of row. Turn.



5th to 48th rows: As 3rd and 4th rows

49th row: As 3rd row.

50th row: Ch 3. 1 dc in each st and ch-1 sp to end of row. Fasten off.



STITCH KEY

-  = chain (ch)
-  = double crochet (dc)