



CROCHET | SKILL LEVEL: INTERMEDIATE

ABBREVIATIONS

Approx = Approximately

Beg = Beginning

Ch = Chain(s)

Cont = Continue(ity)

Dc = Double crochet

Dec = Decrease

Rem = Remain(ing)

Rep = Repeat

Rnd = Round

RS = Right side

Sc = Single crochet

Sc2tog = Draw up a loop in each of next 2 stitches. Yoh and draw through all loops on hook.

Sl st(s) = Slip stitch(es)

Sp(s) = Space(s)

St(s) = Stitch(es)

Yoh = Yarn over hook

MATERIALS

Red Heart® Super Saver® (7 oz/198 g; 364 yds/333 m)

Contrast A Burgundy (0376) **1 ball or 340 yds/311 m**

Contrast B Flamingo (0259) **1 ball or 333 yds/304 m**

Contrast C Gold (0321) **1 ball or 302 yds/276 m**

Contrast D Medium Thyme (0406) **1 ball or 333 yds/304 m**

Contrast E Jade (3862) **1 ball or 321 yds/294 m**

Contrast F Hunter Green (0389) **1 ball or 344 yds/315 m**

Contrast G Cherry Red (0319) **1 ball or 364 yds/333 m**

Contrast H Soft White (0316) **3 balls or 776 yds/710 m**

Red Heart® Super Saver® (5 oz/141 g; 260 yds/238 m)

Contrast I Buff Fleck (04334) **1 ball or 39 yds/36 m**

Sizes U.S. H/8 (5 mm) and U.S. I/9 (5.5 mm) crochet hooks **or sizes needed to obtain gauge.** Tapestry needle. Stitch marker.

MEASUREMENTS

Blanket: Approx 50" x 59" [127 x 150 cm]

Tag: Approx 3½" x 6" [9 x 15 cm].

GAUGES

12 dc and 7.5 rows = 4" [10 cm] with larger hook.

13 sc and 16 rows = 4" [10 cm] with smaller hook.

INSTRUCTIONS

BLANKET

Notes:

- Blanket is worked diagonally from corner to corner.
- When working from Chart, wind small balls of the colors to be used, one for each separate area of color in the design.
- Start new colors at appropriate points. To change color, work to last 2 loops on hook, yoh with new color. Pull through 2 loops on hook to complete st and proceed in new color.

With A and larger hook, ch 6. See stitch diagram on page 3 and Chart on page 4. Each square of chart represents 1 block.

1st row: (RS). 1 dc in 4th ch from hook (counts as 2 dc). 1 dc in each of last 2 ch. Turn. 1 block made.

2nd row: Ch 6. 1 dc in 4th ch from hook. 1 dc in each of next 2 ch – beg block made. (Sl st. Ch 3. 3 dc) in next ch-3 sp – block made. Turn. 2 blocks.

3rd row: Beg block. *Block in next ch-3 sp. Rep from * to end of row. Turn. 3 blocks.

Keeping cont of color changes in Chart (each square on grid represents 1 block), rep last row until 60th row of chart is complete. 60 blocks.

Keeping cont of Chart, proceed as follows to work sides even:

61st row: Sl st in each of first 3 dc. *Block in next ch-3 sp. Rep from * to end of row. Turn.

62nd row: Beg block. *Block in next ch-3 sp. Rep from * to last ch-3 sp. Sl st in last ch-3 sp. (**Do not** make a block.) Turn.

63rd to 72nd rows: Rep last 2 rows 5 times more.

Keeping cont of Chart, proceed as follows to dec corner:

73rd row: Sl st in each of first 3 dc. *Block in next ch-3 sp. Rep from * to last ch-3 sp. Sl st in last ch-3 sp. (**Do not** make a block). Turn. Keeping cont of Chart, rep last row until 1 block rem. Fasten off.

Edging: (RS). Join H with sl st between any 2 blocks along edge.

1st rnd: Ch 3. *Sl st between next 2 blocks. Ch 3. Rep from * around, working (Sl st. Ch 3. Sl st) in each corner. Join with sl st in first sl st. Turn.

2nd rnd: Sl st in next ch-3 sp. Ch 3 (counts as 1 dc). 2 dc in same sp as last sl st. *3 dc in next ch-3 sp. Rep from * around, working (3 dc. Ch 1. 3 dc) in each corner ch-3 sp. Join with sl st to top of first ch-3. Fasten off.

TAG

With I and smaller hook, ch 11.

1st row: (RS). 1 sc in 2nd ch from hook. 1 sc in each ch to end of chain. Turn. 10 sc.

2nd to 20th rows: Ch 1. 1 sc in each sc across. Turn.

21st row: (RS). Ch 1. Skip first sc. 1 sc in each of next 7 sc. Sc2tog. Turn. 8 sc.

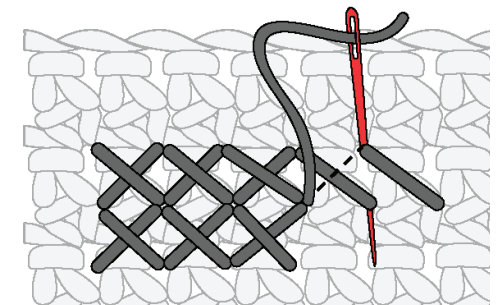
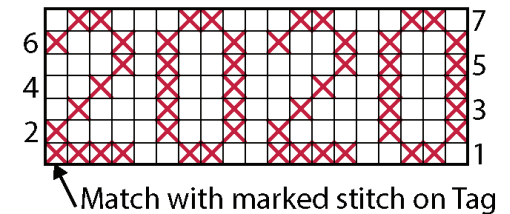
22nd row: Ch 1. Skip first sc. 1 sc in each of next 2 sc. Ch 3. Skip next 2 sc. 1 sc in next sc. Sc2tog. Turn.

23rd row: Ch 1. Skip first sc. 1 sc in next sc. 2 sc in next ch-3 sp. Sc2tog. 4 sc.

Fasten off.

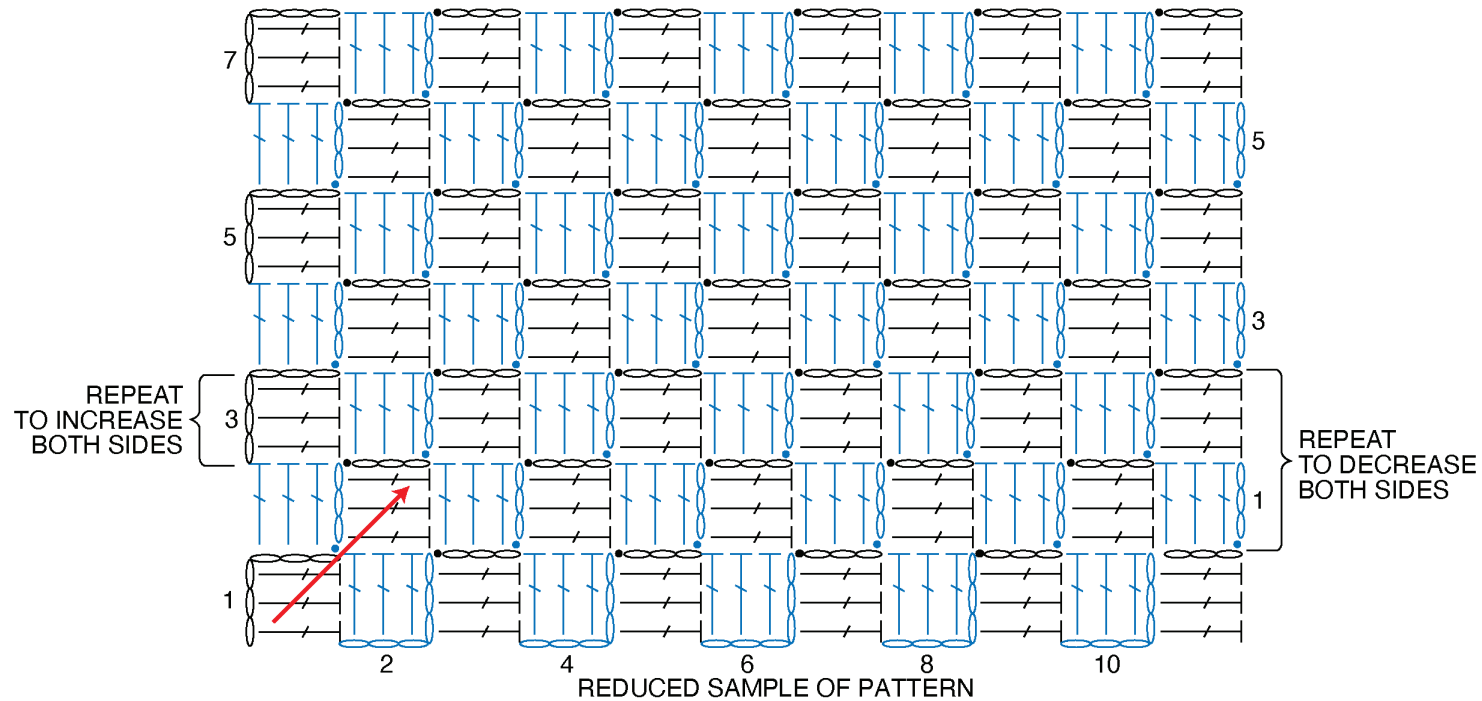
Cross Stitch Embroidery:

Use st marker to mark back of 8th st from 2nd row (2nd bump up from bottom edge in 2nd row of Tag – bottom left corner as shown in photo). Line up marked st with lowest most left st of chart and work cross stitch embroidery using G yarn. Each square of chart represents 1 sc.



Tag Edging: 1st rnd: (RS). With smaller hook, join I with sl st at any corner to work around Tag. Ch 1. Work sc evenly around Tag, working (1 sc. Ch 2. 1 sc) in each corner. Join with sl st to first sc. Fasten off.

Attaching Tag to Blanket: Cut 6" [15 cm] length of I and thread through ch-3 hole at end of Tag. Tie to Blanket.



STITCH KEY

○ = chain (ch)

● = slip stitch (sl st)

┆ = double crochet (dc)

