



Sunset Throw

Designed by Marianne Forrester.

Finished Measurements: 42" x 60"

RED HEART® "Super Saver®": 3 skeins 330 Linen **A**, 1 skein 320 Cornmeal **B**, 2 skeins 360 Café **C**, 1 skein 332 Ranch Red **D**, 1 skein 656 Real Teal **E**

Crochet Hook: 5.5mm [US I-9]
Yarn needle

GAUGE: 13 sc and 15 sc rows = 4". 13 dc and 4.5 dc rows = 4". **CHECK YOUR GAUGE. Use any size hook to obtain the gauge.**

How to Make a Gauge Swatch

With any color, ch 14.

Row 1: Sc in 2nd ch from hook and in each rem ch across—13 sc.

Rows 2-15: Ch 1, turn; sc in each sc across. Swatch should measure approx 4" square. Adjust hook size if necessary to obtain correct gauge.

NOTES

1. When working with multiple color sections across a row, do not carry colors under sts. Instead, make bobbins (small, separate balls of yarn) for each color section, and join them as needed.
2. To change colors, work last st of old color until 2 loops remaining on hook, yo with new color and draw through both loops on hook. Drop old color to wrong side of work to be picked up again on next row.
3. Fasten off any colors not being used on next row.

THROW

With **A**, ch 138.

Row 1 (wrong side): Sc in 2nd ch from hook and in each remaining ch across, turn—137 sc (Row 1 of chart complete).

Rows 2-64: Work in sc and dc following chart. Work all even-numbered rows from **A** to **B**, then work from **C** to **B** once, then work from **C** to **D**, turn. Work all odd-numbered rows from **D** to **C**, then work from **B** to **C**, then work from **B** to **A**, turn.

Rows 65-172: Repeat Rows 11-64 twice.

Rows 173-182: Repeat Rows 11-20.

Row 183: With **A**, ch 1, turn; sc in each st across.

Rows 184-192: Repeat Rows 2-10. At end of Row 192, fasten off.

Finishing

Weave in all ends.



RED HEART® "Super Saver®": Art. E300 available in solid color 7 oz (198 g), 364 yd (333 m); multi color, fleck and print 5 oz (141 g), 244 yd (223 m) skeins.

ABBREVIATIONS: **A, B, etc.** = Color A, Color B, etc.; **ch(s)** = chain(s); **dc** = double crochet; **sc** = single crochet; **st(s)** = stitch(es); **yo** = yarn over; * = Repeat directions following * as many times as indicated; [] = Repeat directions inside brackets as many times as indicated.



SUNSET THROW | CROCHET

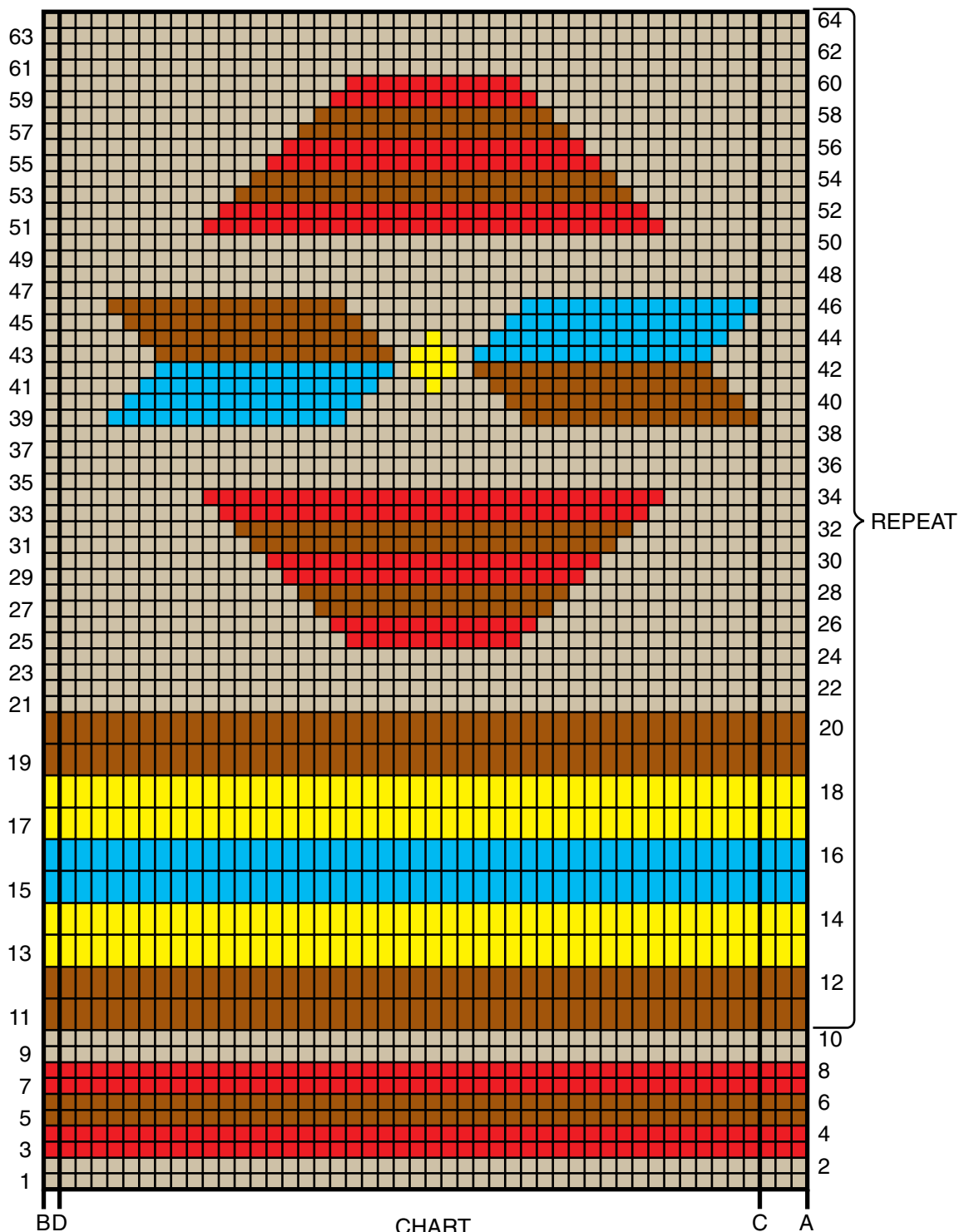










CHART KEY

- | | |
|--|--|
|  = sc in Linen (A) |  = dc in Cornmeal (B) |
|  = sc in Cornmeal (B) |  = dc in Cafe (C) |
|  = sc in Cafe (C) |  = dc in Dusty Teal (E) |
|  = sc in Ranch Red (D) | |
|  = sc in Dusty Teal (E) | |