



CROCHET
SKILL LEVEL
INTERMEDIATE



Designed by Katherine Eng

What you will need:

RED HEART® Soft®: 7 balls 4600 White **A**, and 2 balls 4614 Black **B**

Susan Bates® Crochet Hook: 6mm [US J-10]

Yarn needle

GAUGE: One square = about 9 x 9" [23 x 23 cm]. **CHECK YOUR GAUGE. Use any size hook to obtain the gauge.**



RED HEART® Soft®, Art. E728 available in solid color 5 oz (141 g), 256 yd (234 m), print 4 oz (113 g), 204 yd (187 m), and heather 4 oz (113 g), 212 yd (194 m) balls

Positive Signs Throw

This bold, graphic throw was inspired by traditional quilting. The modern take results in a timeless combination that will fit into any room of the house. It would make a great gift for a college-bound student's dorm room, too!

Throw measures 45" [114.5 cm] x 54" [137 cm].

Special Stitches

ch-2-join (join ch-2 spaces as-you-go) = Ch 1, drop loop from hook, insert hook from right side to wrong side through corresponding ch-2 space in neighboring Square, return dropped loop to hook, ch 1.

ch-4-join (join corner ch-4 spaces as you go) = Ch 2, drop loop from hook, insert hook from right side (front) to wrong side (back) through corresponding corner ch-4 space in neighboring Square, return dropped loop to hook, ch 2.

join with sc = Place a slip knot on hook, insert hook in indicated stitch, yarn over and draw up a loop, yarn over and draw through both loops on hook.

Notes

1. Throw is made from 30 Squares, arranged and joined into 6 rows of 5 Squares each.
2. Each Square is made from 7 pieces that form a positive sign.
3. "Join-as-you-go" techniques are used to join pieces into Squares and the Squares into rows.
4. Diagrams clarify the "join-as-you-go" techniques and show Square layout.

THROW SQUARE 1

First Piece

With **A**, ch 8.

Row 1 (right side): Sc in 2nd ch from hook, *ch 1, skip next ch, sc in next ch; repeat from * across – 4 sc and 3 ch-1 spaces.

Rows 2-7: Ch 1, turn, sc in first sc, *ch 1, skip ch-1 space, sc in next sc; repeat from * across. Fasten off.

Second Piece

With right side facing, draw up a loop of **B** in ch at base of first sc of Row 1 of first piece (lower right corner), then ch 8.

Row 1 (right side): Sc in 2nd ch from hook, [ch 1, skip next ch, sc in next ch] 3 times, slip st in beginning ch of Row 1 of first piece – 4 sc and 3 ch-1 spaces.

Row 2: Ch 1, turn, sc in first sc, *ch 1, skip next ch-1 space, sc in next sc; repeat from * across.

Row 3: Ch 1, turn, sc in first sc, [ch 1, skip next ch-1 space, sc in next sc] 3 times, slip st in beginning ch of Row 3 of first piece.

Row 4: Repeat Row 2.

Row 5: Repeat Row 3, joining to beginning ch of Row 5 of first piece.

Row 6: Repeat Row 2.

Row 7: Repeat Row 3, joining to beginning ch of Row 7 of first piece. Fasten off.

Third Piece

With **A**, make the same as second piece, joining to right edge of second piece. Fourth Piece (horizontal bar of positive sign)

Row 1 (right side): With right side facing, join **B** with an sc in first st Row 7 of third piece, *ch 1, skip next sc or seam between pieces, sc in next sc; repeat from * across – 12 sc and 11 ch-1 spaces.

Rows 2-7: Ch 1, turn, sc in first sc, *ch 1, skip ch-1 space, sc in next sc; repeat from * across. Fasten off.

continued...



2015 - 2018
WOMEN'S CHOICE AWARD®
AMERICA'S MOST RECOMMENDED
YARN BRAND

SHOP KIT



Fifth Piece

Row 1 (right side): With right side facing, join **A** with sc in 9th sc of Row 7 of fourth piece, *ch 1, skip next ch-1 space, sc in next sc; repeat from * across - 4 sc and 3 ch-1 spaces.

Rows 2-7: Repeat Rows 2-7 of first piece.

Fasten off.

Sixth Piece

Row 1 (right side): With right side facing, join **B** with sc in 5th sc of Row 7 of fourth piece, *ch 1, skip next ch-1 space, sc in next sc; repeat from * across, slip st in beginning ch of Row 1 of fifth piece - 4 sc and 3 ch-1 spaces.

Rows 2-7: Repeat Rows 2-7 of second piece.

Fasten off.

Seventh Piece

Row 1 (right side): With right side facing, join **A** with sc in first sc of Row 7 of fourth piece, *ch 1, skip next ch-1 space, sc in next sc; repeat from * across, slip st in beginning ch of Row 1 of sixth piece - 4 sc and 3 ch-1 spaces.

Rows 2-7: Repeat Rows 2-7 of second piece.

Fasten off.

Border

Round 1 (right side): With right side facing, join **A** with sc in beginning ch of Row 1 of third piece; working up right edge of square, [ch 1, skip next row, sc in end of next row] 9 times, ch 1, skip next row, (sc, ch 2, sc) in corner sc; turn to work along top edge, [ch 1, skip next ch-1 space or seam between pieces, sc in next sc] 10 times, ch 1, skip next ch-1 space, (sc, ch 2, sc) in corner sc; turn to work along left side edge, ch 1, skip first row, [ch 1, skip next row, sc in end of next row] 9 times, ch 1, skip last row; turn to work along opposite edge of foundation ch, (sc, ch 2, sc) in first ch,

[ch 1, skip next ch-1 space, sc in next ch] 10 times, ch 1, skip next ch-1 space, (sc, ch 2, sc) in last ch; join with slip st in first sc - 48 sc, 44 ch-1 spaces, and 4 corner ch-2 spaces (12 sc and 11 ch-1 spaces along each of 4 sides between corner ch-2 spaces).

Round 2: Ch 1, sc in each sc and each ch-1 space around, working (sc, ch 2, sc) in each corner ch-2 space; join with slip st in first sc - 100 sc (25 sc along each of 4 sides between corner ch-2 spaces).

Round 3: Ch 3 (counts as first dc here and throughout), dc in each sc around, working (dc, ch 2, dc) in each corner ch-2 space; join with slip st in top of beginning ch-3 - 108 dc; 27 dc along each side and 4 ch-2 spaces.

Round 4: Skip same dc as joining, [* (sc, ch 2, sc) in next dc, skip next dc; repeat from * to next corner ch-2 space, (sc, ch 2, sc, ch 4, sc, ch 2, sc) in corner ch-2 space, skip next dc] 4 times; join with slip st in first sc - 52 (sc, ch 2, sc) groups and 4 (sc, ch 2, sc, ch 4, sc, ch 2, sc) corner-groups (13 (sc, ch 2, sc) groups along each of 4 sides between corners).

Fasten off. Center Square completed.

SQUARE 2

Work same as Square 1 through Round 3 of border.

Note: Round 4 of Square 2 is worked the same as Round 4 of Square 1, EXCEPT the ch-2 spaces and corner ch-4 spaces are joined-as-you-go to the ch-2 spaces and corner ch-4 spaces along one edge of Square 1. Before beginning Round 4, review the ch-2-join and ch-4 join defined in the Special Stitches section at the beginning of the pattern instructions. Refer to diagram for placement of each Square. Hold Square 2 to the left of Square 1 as you

join the left edge of Square 2 to the right edge of Square 1.

Round 4 (Joining Round): Skip same dc as joining,

Work along right edge: *(Sc, ch 2, sc) in next dc, skip next dc; repeat from * to next corner ch-2 space, (sc, ch 2, sc, ch 4, sc, ch 2, sc) in corner ch-2 space, skip next dc,

Work along top edge: *(Sc, ch 2, sc) in next dc, skip next dc; repeat from * to next corner ch-2 space, (sc, ch 2, sc, ch-4-join, sc, ch-2-join, sc) in next corner ch-2 space, skip next dc,

Work along left edge joining to right edge of previous Square: *(Sc, ch-2-join, sc) in next dc, skip next dc; repeat from * to next corner ch-2 space, (sc, ch-2-join, sc, ch-4-join, sc, ch 2, sc) in next corner ch-2 space, skip next dc,

Work along lower edge: *(Sc, ch 2, sc) in next dc, skip next dc; repeat from * to next corner ch-2 space, (sc, ch 2, sc, ch 4, sc, ch 2, sc) in corner ch-2 space, [skip next dc, (sc, ch 2, sc) in next dc] twice; join with slip st in first sc. Fasten off.

SQUARES 3-5

Work same as Square 2, joining each square to the previous square to complete first row of Squares, as shown in layout diagram.

SQUARE 6

Work same as Square 1 through Round 3 of border.

Note: Round 4 of Square 6 is worked the same as Round 4 of Square 2, EXCEPT the lower edge of Square 6 is joined to the top edge of Square 1 to begin the next row of Squares. Hold Square 6 above Square 1 as you join the lower edge of Square 6 to the top edge of Square 1, as shown in layout diagram.

Round 4 (Joining Round): Skip same dc as joining,

Work along right and top edge: [* (Sc, ch 2, sc) in next dc, skip next dc; repeat from * to next corner ch-2 space, (sc, ch 2, sc, ch 4, sc, ch 2 and sc) in corner ch-2 space, skip next dc] twice,

Work along left edge: *(Sc, ch 2, sc) in next dc, skip next dc; repeat from * to next corner ch-2 space, (sc, ch 2, sc, ch-4-join, sc, ch-2-join, sc) in next corner ch-2 space, skip next dc,

Work along lower edge joining to top edge of previous Square: *(Sc, ch-2-join, sc) in next dc, skip next dc; repeat from * to next corner ch-2 space, (sc, ch-2-join, sc, ch-4-join, sc, ch 2, sc) in corner ch-2 space, [skip next dc, (sc, ch 2, sc) in next dc] twice; join with slip st in first sc. Fasten off.

SQUARES 7-10

Note: Round 4 of Squares 7-10 are worked the same as Round 4 of Square 2, EXCEPT two sides are joined to two previous Squares. The left edge of Square 7 is joined to the right edge of Square 6 and lower edge of Square 7 is joined to the top edge of Square 2. Refer to the layout diagram for placement of Squares. Hold the current Square to the right and above the previous neighboring Squares.

Round 4 (Joining Round): Skip same dc as joining,

Work along right edge: *(Sc, ch 2, sc) in next dc, skip next dc; repeat from * to next corner ch-2 space, (sc, ch 2, sc, ch 4, sc, ch 2 and sc) in corner ch-2 space, skip next dc,

continued...

Work along top edge: *(Sc, ch 2, sc) in next dc, skip next dc; repeat from * to next corner ch-2 space, (sc, ch 2, sc, ch-4-join, sc, ch-2-join, sc) in next corner ch-2 space, skip next dc,

Work along left edge joining to right edge of previous Square: *(Sc, ch-2-join, sc) in next dc, skip next dc; repeat from * to next corner ch-2 space, (sc, ch-2-join, sc, ch-4-join, sc, ch-2-join, sc) in next corner ch-2 space, skip next dc,

Work along lower edge joining to top edge of previous Square: *(Sc, ch-2-join, sc) in next dc, skip next dc; repeat from * to next corner ch-2 space, (sc, ch-2-join, sc, ch-4-join, sc, ch-2-join, sc) in corner ch-2 space, [skip next dc, (sc, ch 2, sc) in next dc] twice; join with slip st in first sc.

Fasten off. Repeat to work Squares 8-10 and complete second row of Squares.

SQUARES 11-15

Work same as Squares 6-10 to complete third row of Squares.

SQUARES 16-20

Work same as Squares 6-10 to complete fourth row of Squares.

SQUARES 21-25

Work same as Squares 6-10 to complete fifth row of Squares.

SQUARES 26-30

Work same as Squares 6-10 to complete sixth row of Squares.

FINISHING Throw Border

Round 1: With right side facing, join **A** in any corner ch-4 space with a slip st, ch 1, (sc, ch 2, sc) in corner ch-4 space, [ch 1, skip next sc or seam between Squares, sc in next ch-space] around, working (sc, ch 2, sc) in each corner ch-4 space; join with slip st in first sc.

Round 2: Ch 1, sc in each sc and ch-1 space around, working (sc, ch 2, sc) in each corner ch-2 space; join with slip st in first sc.

Round 3: Ch 1, (sc, ch 2, sc) in same sc, [skip next sc, (sc, ch 2, sc) in next sc] around, working (sc, ch 4, sc) in each corner ch-2 space; join with slip st in first sc.

Fasten off.

Weave in ends.

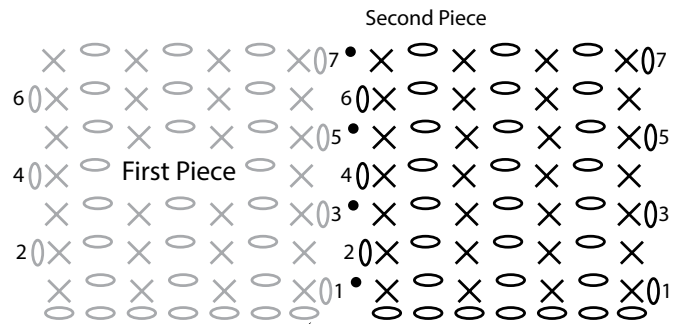
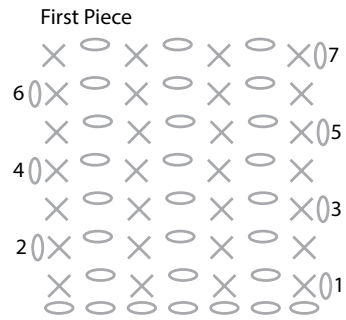
ABBREVIATIONS

A and B = Color A and Color B; **ch** = chain; **dc** = double crochet; **sc** = single crochet; **st(s)** = stitch(es); **()** = work directions in parentheses into same st; **[]** = work directions in brackets the number of times specified; * = repeat whatever follows the * as indicated.

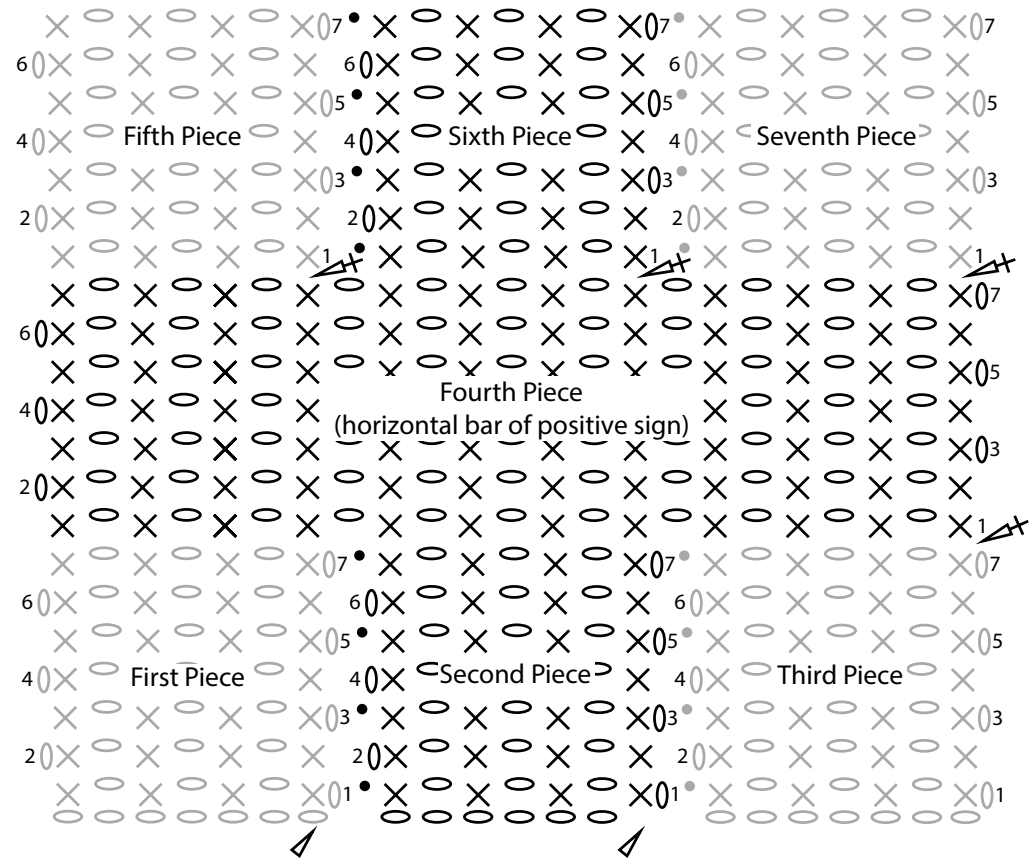


See next pages for diagrams

CENTER SQUARE CONSTRUCTION

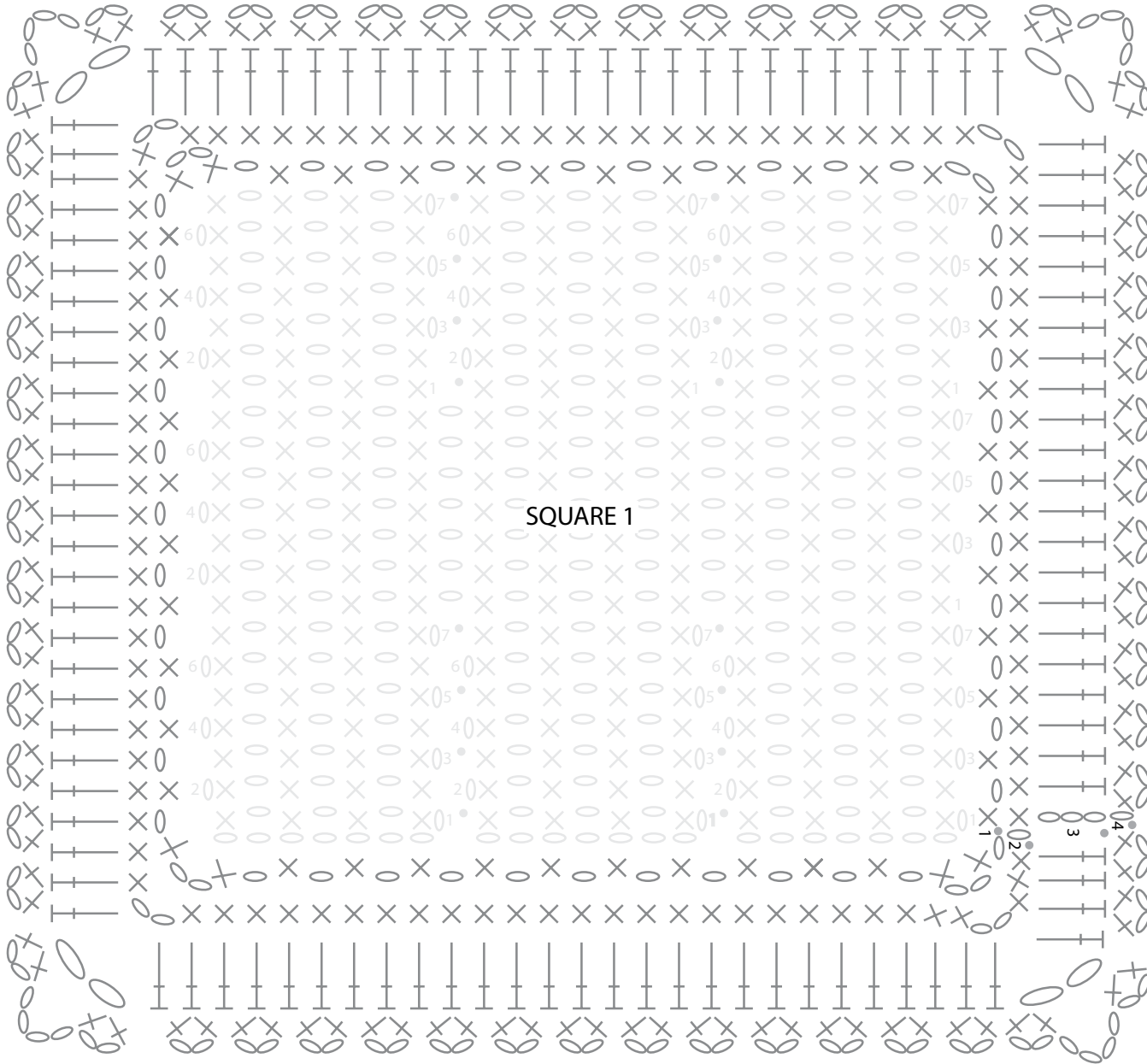


Draw up loop here to begin second piece



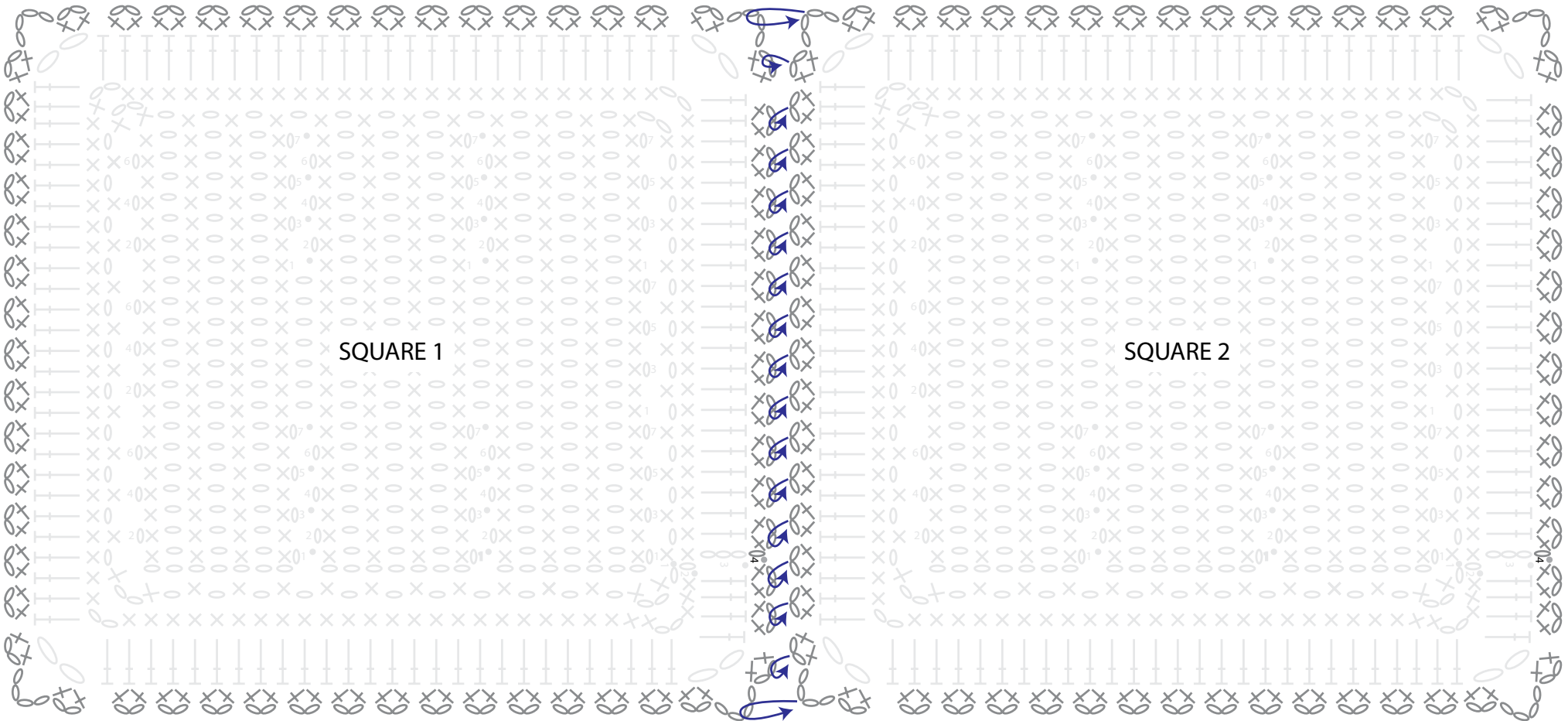
KEY	
•	= slip stitch (sl st)
O	= chain (ch)
X	= single crochet (sc)
⌈	= double crochet (dc)
←+	= join with sc
	= chain-2 join (ch-2-join)
	= chain-4 join (ch-4-join)
	= draw up a loop to begin new piece

SQUARE BORDER


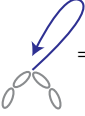
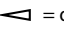


KEY	
●	= slip stitch (sl st)
○	= chain (ch)
X	= single crochet (sc)
┆	= double crochet (dc)
⌞	= join with sc
	= chain-2 join (ch-2-join)
	= chain-4 join (ch-4-join)
	= draw up a loop to begin new piece

JOINING SQUARE 2 TO SQUARE 1



KEY

- = slip stitch (sl st)
- = chain (ch)
- X = single crochet (sc)
- T = double crochet (dc)
- ←+ = join with sc
-  = chain-2 join (ch-2-join)
-  = chain-4 join (ch-4-join)
-  = draw up a loop to begin new piece



SQUARE LAYOUT

Square 26	Square 27	Square 28	Square 29	Square 30
Square 21	Square 22	Square 23	Square 24	Square 25
Square 16	Square 17	Square 18	Square 19	Square 20
Square 11	Square 12	Square 13	Square 14	Square 15
Square 6	Square 7	Square 8	Square 9	Square 10
Square 1	Square 2	Square 3	Square 4	Square 5