



CROCHET | SKILL LEVEL: INTERMEDIATE

ABBREVIATIONS

Approx = Approximately

Beg = Beginning

Ch = Chain(s)

Cont = Continue(ity)

Dc = Double crochet

Rep = Repeat

Rnd(s) = Round(s)

Sc = Single crochet

Sl st = Slip stitch

Sp(s) = Space(s)

St(s) = Stitch(es)

WS = Wrong side

Yoh = Yarn over hook

MEASUREMENTS

Approx 42" x 63" [106.5 x 160 cm].

GAUGE

16 sts and 13 rows = 4" [10 cm] in afghan st with afghan hook.

INSTRUCTIONS

Panel (make 3)

With afghan hook and A. Ch 35.

1st row: Insert hook in 2nd ch from hook. Yoh and draw yarn through st. *Insert hook in next ch. Yoh and draw yarn through st. Rep from * across (35 loops on hook). Yoh and draw yarn through 1 loop on hook. **Yoh and draw yarn through 2 loops on hook. Rep from ** across. 1 loop rem on hook and counts as first loop of next row. 35 sts.

2nd to 180th rows: Insert hook in next vertical st. Yoh and draw yarn through st. *Insert hook in next vertical st. Yoh and draw yarn through st. Rep from * across (35 loops on hook). Yoh and draw yarn through 1 loop on hook. **Yoh and draw yarn through 2 loops on hook. Rep from ** across. 1 loop rem on hook and counts as first loop of next row.

181st row: Slip st in each vertical st across. Fasten off.

PANEL BORDER

With RS of Panel facing, using standard crochet hook. Join A in row-end st of first row in bottom right corner of panel.

MATERIALS

Red Heart® Super Saver® (Solids: 7 oz/198 g; 364 yds/333 m or Prints: 5 oz/141 g; 236 yds/215 m)

Contrast A Soft White (0316) **7 balls**

Contrast B Country Blue (0382) **1 ball**

Contrast C Linen (0330) **1 ball**

Contrast D Cornmeal (0320) **1 ball**

Contrast E Frosty Green (0661) **1 ball**

Size J/10 (6 mm) afghan crochet hook and J/10 (6 mm) crochet hook or size needed to obtain gauge. Yarn needle.

1st rnd: Ch 1. Working down length, ***1 sc in row-end st of first row. *1 dc in 3rd horizontal bar down of next row, pulling dc up to current level of work. 1 sc in row-end st of next row. Rep from * across length. Ch 2. Working across top edge, 1 sc in each of next 4 sts. **Skip next st. 1 sc in each of next 4 sts. Rep from ** across. Skip next st. Ch 2. Rep from *** around. Join with slip st in first sc.

2nd rnd: Ch 3 (counts as dc). *Skip next dc. 1 dc in next sc. Working backwards, 1 dc in last skipped dc, (one cross dc made)*. ***Rep from * to * to last sc. 1 dc in last sc. (2 dc. Ch 2. 2 dc) in corner ch-2 space. **Skip next sc. 1 dc in next sc. Working backwards, 1 dc in last skipped sc**. Rep from ** to ** across. (2 dc. Ch 2. 2 dc) in corner ch-2 space***. 1 dc in next sc. Rep from *** to *** around. Join with slip st in top of ch-3.

3rd rnd: Ch 1. 1 sc in first dc. *Skip next dc. 1 sc in next dc. Working backwards, 1 sc in last skipped dc (one crossed sc made)*. **Rep from * to * to last 3 dc. 1 sc in each of next 3 dc. (1 sc. Ch 2. 1 sc) in corner ch-2 space. 1 sc in each of next 2 dc. Rep from * to * across to 2 dc from

corner. 1 sc in each of next 2 dc. (1 sc. Ch 2. 1 sc) in corner ch-2 sp**. 1 sc in each of next 3 dc. Rep from ** to ** around. 1 sc in each of last 2 dc. Join with slip st in first sc.

4th rnd: Ch 1. 1 sc in first sc. *Skip next sc. 1 sc in next sc. Working backwards, 1 sc in last skipped sc*. **Rep from * to * to 4 sc from corner. 1 sc in each of next 4 sc. (1 sc. Ch 2. 1 sc) in corner ch-2 space. 1 sc in each of next 3 sc. Rep from * to * to 3 sc from corner. 1 sc in each of next 3 sc. (1 sc. Ch 2. 1 sc) in corner ch-2 space **. 1 sc in each of next 4 sc. Rep from ** to ** around. 1 sc in each of last 3 sc. Join with slip st in first sc.

5th rnd: Ch 1. 1 sc in each sc around. (1 sc. Ch 2. 1 sc) in each corner ch-2 space. Join with slip st in first sc. Fasten off. Embroidery Follow chart to cross-stitch design onto each panel.

Panel Assembly: With RS of 2 Panels aligned, slip st panels together on WS using back loops, matching sts from corner to corner down length. Rep for each Panel.

Border: With RS of Afghan facing. Join A in top right-hand corner sc.

1st rnd: Ch 1. *1 sc in each sc and each ch-space on each side of each joining seam across to corner ch-2 space. (1 sc. Ch 2. 1 sc) in corner ch-2 space. 1 sc in each sc down length to next corner ch-2 space. (1 sc. Ch 2. 1 sc) in corner ch-2 space, rep from * around. Join with slip st in first sc.

2nd rnd: Ch 1. 1 sc in first sc. Working backwards, 1 sc in sc to the right of first sc. **Skip next sc. 1 sc in next sc. Working backwards, 1 sc in last skipped sc. Rep from * to next corner ch-2 space. (1 sc. Ch 2. 1 sc) in corner ch-2 space. Join with slip st in first sc.

3rd rnd: Skip first sc. (slip st. Ch 3) in next sc. Working backwards, 1 dc in skipped first sc. *Skip next sc. 1 dc in next sc. Working backwards, 1 dc in last skipped sc*. **Rep from * to * to 1 sc from corner. 1 dc in next sc. (2 dc. Ch 2. 2 dc) in corner ch-2 space. 1 dc in next sc. Rep from * to * down length to 1 sc from corner. 1 dc in next sc. (2 dc. Ch 2. 2 dc) in corner ch-2 space. 1 dc in next sc. Rep from ** around. Join with slip st in 3rd ch of ch-3.

4th rnd: Ch 1. 1 sc in each dc around. Working (1 sc. Ch 2. 1 sc) in each corner ch-2 space. Join with slip st in first sc. Fasten off. Weave in ends.

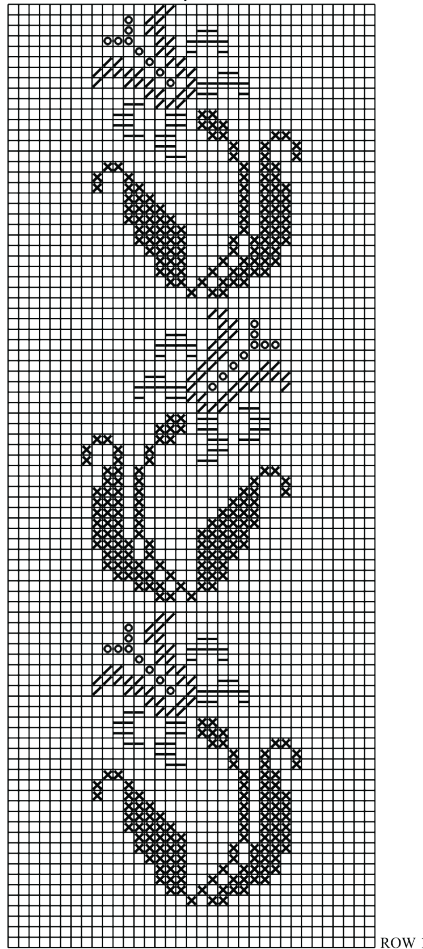
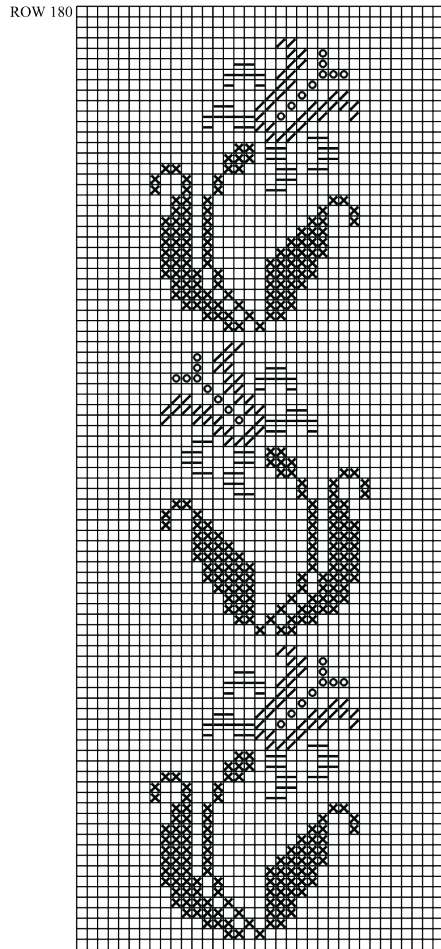






CHART KEY

-  = Cross st in B
-  = Cross st in C
-  = Cross st in D
-  = Cross st in E

