



Poinsettia Throw

This vintage looking throw makes an ideal holiday decoration for any family get together. It will become a keepsake you'll use year after year.

LW2714



Designed by Michele Thompson.

Throw measures 50½ x 60".

RED HEART® Super Saver®: 6 skeins 389 Hunter Green **A**; 2 skeins each 316 Soft White **B** and 376 Burgundy **C**.

Crochet Hooks: 5.5 mm [US I-9] and 5 mm [US H-8].
Yarn needle.

GAUGES: With larger hook, finished square = 4". With larger hook, 13 sts and 15 rows in sc = 4". **CHECK YOUR GAUGE.** Use any size hook to obtain the gauge given.

SQUARE (make 36)

With larger hook and **C**, ch 3; join with a slip st to form a ring.

Round 1 (right side): Ch 3, 11 dc in ring, join with a slip st in top of ch-3. Fasten off **C**.

Round 2: With right side facing, join **B** with a slip st in any dc, *ch 5, slip st in next dc, ch 10, skip next dc, slip st in next dc; repeat from * around; join with a slip st in first ch of ch-5—4 ch-5 loops; 4 ch-10 loops. Fasten off **B**.

Round 3: With right side facing, holding ch-loops forward, join **A** with a slip st in skipped dc under any ch-10 loop, ch 3 (counts as dc here and throughout), *dc in same dc as next slip st, ch 2, sc in next ch-5 loop in rnd 2, ch 2, dc in same dc as next slip st in round 1**, dc in next skipped dc in round 1; repeat from * around, ending last repeat at **; join with a slip st to top of beginning ch-3.

Round 4: Ch 3, dc in next dc, *2 dc in next ch-2 space, ch 3, 2 dc in next ch-2 space**, dc in next 3 dc; repeat from * around, ending last repeat at **; dc in next dc; join with a slip st in top of beginning ch-3. Fasten off.

Round 5: With right side facing, join **B** in any ch-3 space, ch 1, *5 sc in corner ch-3 space, sc in next 3 dc, insert hook through ch-10 loop in rnd 2 and into next dc and complete a sc, sc in next 3 dc; repeat from * around; join with a slip st in first sc. Fasten off.

With yarn needle and **B**, whipstitch 3 strips of 12 squares each together.

End Trim Row: With right side facing and larger hook, join **A** in top right-hand corner, ch 1, work 13 sc across short end of each strip.

Repeat end trim row across other short edge of strip.

Side Trim Row: With right side facing and larger hook, holding work horizontally, join **B** in right-hand corner of strip in side of last st on previous **A** row, ch 1, sc in each sc across, working 13 sc across each square and one sc in each row-end st of each side edge—158 sc. Fasten off.

Repeat side trim row across other long edge of strip.





PANEL (Worked on one side of 2 strips and two sides of the third strip of squares):

Row 1: With right side facing and larger hook, join **A** in first sc of last row, ch 1, sc in each sc across, turn—158 sc.

Rows 2-41: Ch 1, sc in each sc across, turn. Fasten off.

Cross-stitch on panels following Chart making sure that all cross-stitch borders are going in the same direction. Sew strips and panels together as pictured.

Long Side Edging: With right side facing and smaller hook, join **A** in top right-hand corner, ch 1, work 211 sc evenly spaced across long edge of throw. Fasten off.

Repeat long side edging across other long edge of throw.

EDGING

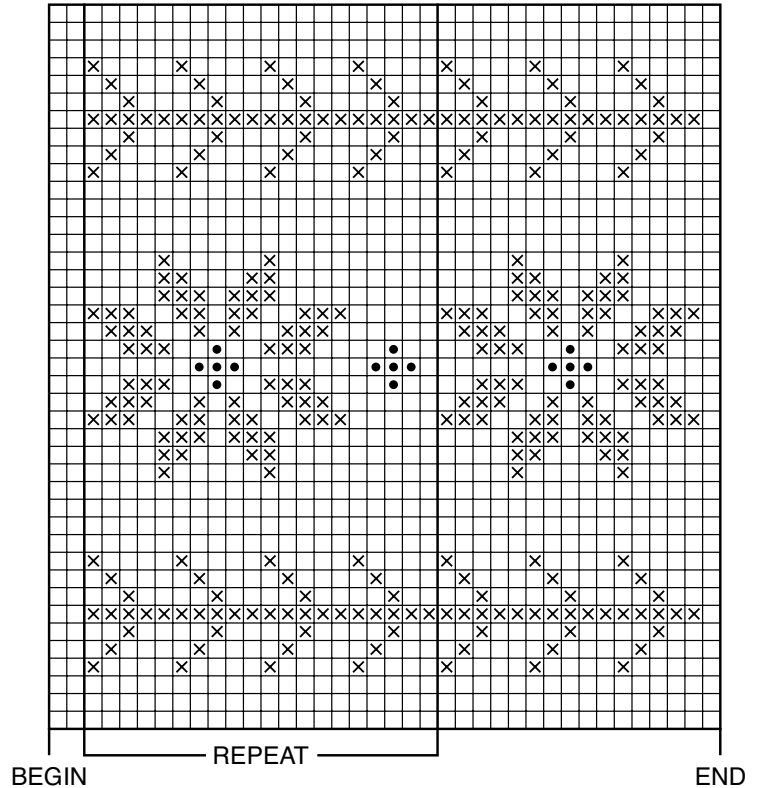
Round 1: With right side facing, join **B** in top right-hand corner, ch 1, *3 sc in corner, work 211 sc across long edge, 3 sc in corner st, work 163 sc across short edge; join with a slip st in first sc.

Round 2 Slip st to center sc of corner 3-sc group, ch 1, sc in same sc, ***skip next sc, *(2 dc, ch 3, 2 dc) all in next sc**, skip next 2 sc, sc in next sc, skip next 2 sc; repeat from * to next corner, ending last repeat at **; skip next sc, sc in next sc; repeat from *** around, ending last repeat at **; join with a slip st in first sc. Fasten off.

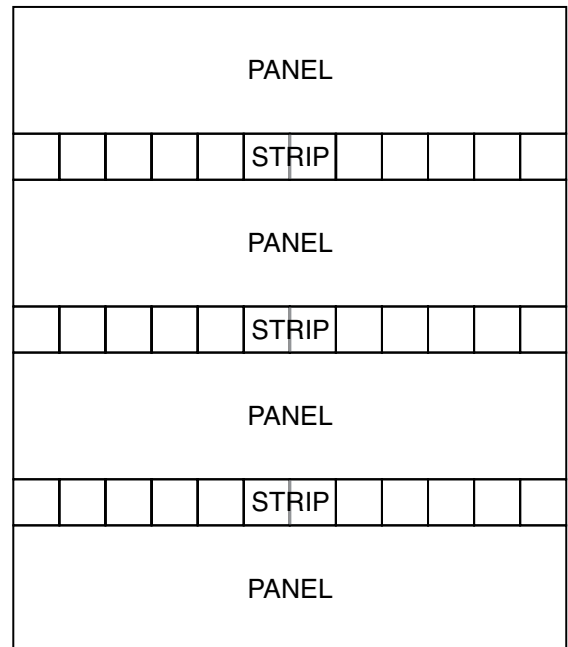


RED HEART® Super Saver®, Art. E300 available in solid color 7 oz (198 g), 364 yd (333 m); multicolor, heather and print 5 oz (141 g), 244 yd (223 m), flecks 5 oz (141g), 260 yds (238 m) skeins.

ABBREVIATIONS: ch = chain; dc = double crochet; mm = millimeter; sc = single crochet; st(s) = stitch(es); [] = work directions given in brackets the number of times specified; * or ** = repeat whatever follows the * or ** as indicated.



- = background sc
- = cross st in B
- = cross st in C



ASSEMBLY DIAGRAM

