



CROCHET
SKILL LEVEL
EASY

Designed by Marianne Forrester



What you will need:

RED HEART® Soft®: 2 balls 9523 Dark Leaf **A**; 1 ball each 9522 Leaf **B**, 9623 Spearmint **C**, 9518 Teal **D**, 2515 Turquoise **E**, 9520 Seafoam **F**, 3729 Grape **G**, 3720 Lavender **H**, 9528 Lilac **I**, 1882 Toast **J**, 9388 Wheat **K**, and 9114 Honey **L**

Susan Bates® Crochet Hook:
5mm [US H-8]

Yarn needle

GAUGE: In pattern, (sc, 5 dc, sc, 5 dc) = 4" (10 cm); 8 rows = 4" (10 cm). **CHECK YOUR GAUGE.** Use any size hook to obtain the gauge.



RED HEART® Soft®, Art. E728 available in solid color 5 oz (140 g), 256 yd (234 m) and print 4 oz (113 g), 204 yd (187 m) balls

Twilight Shells Throw

Use beautiful shadings that are reminiscent of the colors we see at the end of the day, or any colors you desire, to crochet this cozy throw.

Throw measures 47" x 61" (1119.4 x 154.9 cm)

Special Abbreviation

dec (decrease) = [yo and draw up a loop in next st, yo and draw through 2 loops on hook] 5 times, yo and draw through all 6 loops on hook.

Color sequence

[1 row **A**, 2 rows each **B**, **C**, **D**, **E**, **F**, **G**, **H**, **I**, **J**, **K**, **L**, 1 row **A**] 5 times.

Note

When changing color, work last st of row until 2 loops are left on hook, drop old color, yo with new color and complete stitch. Fasten off old color.

THROW

With **A**, ch 188.

Row 1: 2 Dc in 4th ch from hook (beginning ch counts as first dc), [skip next 3 ch, sc in next ch, skip next 3 ch, 5 dc in next ch] 22 times, skip next 3 ch, sc in next ch, skip next 3 ch, 3 dc in last ch changing to **B** in last dc; turn.

Row 2: Ch 1, sc in first dc, * ch 3, dec, ch 3, sc in next dc ; repeat from * across, working last sc in top of ch-3; turn.

Row 3: Ch 3 (counts as first dc here and throughout), 2 dc in first sc, * sc in top of dec **, 5 dc in next sc; repeat from * to last sc, end at **; 3 dc in last sc changing to next color in last dc; turn.

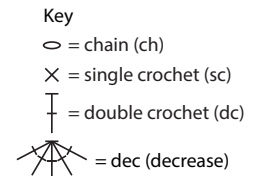
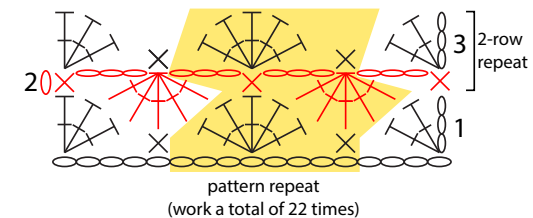
Rows 4-120: Following color sequence above, repeat rows 2 and 3 fifty eight times, then repeat row 2 once more. At end of row 120, do NOT fasten off **A**, do NOT turn.

Border

Working down left side of throw in edges of rows, ch 3, [2 dc in edge of first row, dc in edge of next row] 59 times, 2 dc in edge of next row; working in opposite side of starting ch, 3 dc in first ch, [2 dc in next ch-3 space, dc in ch opposite next sc, 2 dc in next ch-3 space, dc in ch opposite next 5-dc group] 22 times, 2 dc in next ch-3 space, dc in ch opposite next sc, 2 dc in next ch-3 space, 3 dc in last ch; working along right side of throw in edges of rows, 2 dc in edge of first row, [dc in edge of next row, 2 dc in edge of next row] 59 times; working across Row 120, 3 dc in first sc, [2 dc in next ch-3 space, dc in next dec, 2 dc in next ch-3 space, dc in next sc] 22 times, 2 dc in next ch-3 space, dc in next dec, 2 dc in next ch-3 space, 2 dc in same st as starting ch-3; join. Fasten off. Weave in ends.

ABBREVIATIONS

A, B, C, etc. = color A, B, C, etc.; **ch** = chain; **dc** = double crochet; **mm** = millimeters; **sc** = single crochet; **st(s)** = stitch (es); **yo** = yarn over; * or ** = repeat whatever follows the * or ** as indicated; **[]** = work directions in brackets the number of times specified.



SHOP KIT