



CROCHET
SKILL LEVEL
INTERMEDIATE



Designed by Jessie Rayot

What you will need:

RED HEART® Super Saver®:
4 skeins 3991 Earthy **A**, and 1
skein each of 726 Coral **B**, 336
Warm Brown **C**, 376 Burgundy
D, 369 Mushroom **E**, 506
Pool **F**

Susan Bates® Crochet Hook:
5.5mm [US I-9]

Yarn needle

GAUGE: 14 sts = 4" [10 cm];
15 rows = 8" [20.5 cm] in
double crochet. **CHECK YOUR
GAUGE.** Use any size hook to
obtain the gauge.



**RED HEART® Super
Saver®, Art. E300**
available in solid
color 7 oz (198 g), 364 yd
(333 m); multicolor, heather
and print 5 oz (141 g), 236 yd
(215 m), flecks 5 oz (141g),
260 yds (238 m) skeins

SHOP KIT

Caring Comfort Crochet Throw

Create a throw that gives comfort to those you love. This pattern starts with instructions for the Basket Weave stitch and each of the five different leaf squares. But you actually begin crocheting at the starting chain where the "Throw" instructions begin on page 3.

Throw measures about 45 x 55" [114.5 x 139.5 cm].

SPECIAL STITCHES

Bptr (Back post treble crochet) = [Yarn over] twice, insert hook from back side of work to front and to back again around post of the indicated stitch; yarn over and pull up a loop (4 loops on hook), [yarn over and draw through 2 loops] 3 times.

Fptr (Front post treble crochet) = [Yarn over] twice, insert hook from front side of work to back and to front again around post of the indicated stitch; yarn over and pull up a loop (4 loops on hook), [yarn over and draw through 2 loops] 3 times.

PATTERN STITCHES

Basket Weave (worked over a multiple of 8 sts + 6 sts)

Row 1 (right side): Ch 3 (counts as dc), turn, *Fptr around each of next 4 sts, Bptr around each of next 4 sts; repeat from * to last 5 sts, Fptr around each of next 4 sts, dc in top of beginning ch-3.

Rows 2 and 3: Ch 3 (counts as dc, turn, *Bptr around each of next 4 sts, Fptr around each of next 4 sts; repeat from * to last 5 sts, Bptr around each of next 4 sts, dc in top of beginning ch-3.

Row 4: Repeat Row 1.

Repeat Rows 1-4 for Basket Weave pattern.

Leaf I (worked over 33 sts)

Row 1 (right side): Dc in next 33 sts.

Rows 2 and 3: Dc in next 16 sts, ch 1, skip next st, dc in next 16 sts.

Row 4: Dc in next 8 sts, [ch 1, skip next st, dc in next st] 8 times, ch 1, skip next st, dc in next 8 sts.

Row 5: Dc in next 6 sts, ch 1, skip next st, dc in next 8 sts, ch 1, skip next st, dc in next st, ch 1, skip next st, dc in next 6 sts.

continued...



2015 - 2017
WOMEN'S CHOICE AWARD®
AMERICA'S MOST RECOMMENDED
YARN BRAND



Row 6: Dc in next 4 sts, ch 1, skip next st, dc in next 9 sts, [ch 1, skip next st, dc in next st] twice, ch 1, skip next st, dc in next 9 sts, ch 1, skip next st, dc in next 4 sts.

Row 7: Dc in next 4 sts, ch 1, skip next st, dc in next 8 sts, [ch 1, skip next st, dc in next 2 sts] twice, ch 1, skip next st, dc in next 8 sts, ch 1, skip next st, dc in next 4 sts.

Row 8: Dc in next 4 sts, ch 1, skip next st, dc in next 7 sts, [ch 1, skip next st, dc in next 3 sts] twice, ch 1, skip next st, dc in next 7 sts, ch 1, skip next st, dc in next 4 sts.

Row 9: Dc in next 4 sts, ch 1, skip next st, dc in next 6 sts, [ch 1, skip next st, dc in next 4 sts] twice, ch 1, skip next st, dc in next 6 sts, ch 1, skip next st, dc in next 4 sts.

Row 10: Dc in next 5 sts, ch 1, skip next st, dc in next 4 sts, [ch 1, skip next st, dc in next 5 sts] twice, ch 1, skip next st, dc in next 4 sts, ch 1, skip next st, dc in next 5 sts.

Row 11: Dc in next 7 sts, [ch 1, skip next st, dc in next 8 sts] twice, ch 1, skip next st, dc in next 7 sts.

Row 12: Dc in next 9 sts, [ch 1, skip next st, dc in next 6 sts] twice, ch 1, skip next st, dc in next 9 sts.

Row 13: Dc in next 11 sts, [ch 1, skip next st, dc in next 4 sts] twice, ch 1, skip next st, dc in next 11 sts.

Row 14: Dc in next 13 sts, [ch 1, skip next st, dc in next 2 sts] twice, ch 1, skip next st, dc in next 13 sts.

Row 15: Dc in next 14 sts, ch 1, skip next st, dc in next 3 sts, ch 1, skip next st, dc in next 14 sts.

Row 16: Dc in next 15 sts, ch 1, skip next st, dc in next st, ch 1, skip next st, dc in next 15 sts.

Row 17: Dc in next 16 sts, ch 1, skip next st, dc in next 16 sts.

Row 18: Dc in next 33 sts.

Leaf II (worked over 33 sts)

Row 1 (right side): Dc in next 33 sts.

Row 2: Dc in next 2 sts, ch 1, skip next st, dc in next 30 sts.

Row 3: Dc in next 17 sts, [ch 1, skip next st, dc in next st] twice, ch 1, skip next st, dc in next 7 sts, ch 1, skip next st, dc in next 3 sts.

Row 4: Dc in next 5 sts, ch 1, skip next st, dc in next 2 sts, ch 1, skip next st, dc in next st, ch 1, skip next st, dc in next 6 sts, ch 1, skip next st, dc in next st, ch 1, skip next st, dc in next 13 sts.

Row 5: Dc in next 10 sts, ch 1, skip next st, dc in next st, ch 1, skip next st, dc in next 12 sts, ch 1, skip next st, dc in next 7 sts.

Row 6: Dc in next 4 sts, ch 1, skip next st, dc in next st, ch 1, skip next st, dc in next 2 sts, ch 1, skip next st, dc in next 13 sts, ch 1, skip next st, dc in next 9 sts.

Row 7: Dc in next 8 sts, ch 1, skip next st, dc in next 12 sts, ch 1, skip next st, dc in next 7 sts, ch 1, skip next st, dc in next 3 sts.

Row 8: Dc in next 2 sts, ch 1, skip next st, dc in next 10 sts, ch 1, skip next st, dc in next 11 sts, ch 1, skip next st, dc in next 7 sts.

Row 9: Dc in next 6 sts, ch 1, skip next st, dc in next 10 sts, ch 1, skip next st, dc in next 12 sts, ch 1, skip next st, dc in next 2 sts.

Row 10: Dc in next 2 sts, ch 1, skip next st, dc in next 14 sts, ch 1, skip next st, dc in next 9 sts, ch 1, skip next st, dc in next 5 sts.

Row 11: Dc in next 5 sts, ch 1, skip next st, dc in next 7 sts, ch 1, skip next st, dc in next 15 sts, ch 1, skip next st, dc in next 3 sts.

Row 12: Dc in next 4 sts, ch 1, skip next st, dc in next 16 sts, ch 1, skip next st, dc in next 6 sts, ch 1, skip next st, dc in next 4 sts.

Row 13: [Dc in next 4 sts, ch 1, skip next st] twice, dc in next 14 sts, ch 1, skip next st, dc in next st, ch 1, skip next st, dc in next 6 sts.

Row 14: Dc in next 10 sts, ch 1, skip next st, dc in next 14 sts, ch 1, skip next st, dc in next 3 sts, ch 1, skip next st, dc in next 3 sts.

Row 15: Dc in next 3 sts, ch 1, skip next st, dc in next st, ch 1, skip next st, dc in next 10 sts, [ch 1, skip next st, dc in next st] twice, ch 1, skip next st, dc in next 12 sts.

Row 16: Dc in next 18 sts, [ch 1, skip next st, dc in next st] 3 times, ch 1, skip next st, dc in next 5 sts, ch 1, skip next st, dc in next 2 sts.

Row 17: Dc in next 2 sts, [ch 1, skip next st, dc in next st] twice, ch 1, skip next st, dc in next 26 sts.

Row 18: Dc in next 33 sts.

Leaf III (worked over 33 sts)

Row 1 (right side): Dc in next 33 sts.

Row 2: Dc in next 16 sts, ch 1, skip next st, dc in next 16 sts.

Row 3: Dc in next 11 sts, ch 1, skip next st, dc in next st, [ch 1, skip next st, dc in next 2 sts] twice, ch 1, skip next st, dc in next st, ch 1, skip next st, dc in next 11 sts.

Row 4: Dc in next 9 sts, ch 1, skip next st, dc in next 5 sts, ch 1, skip next st, dc in next st, ch 1, skip next st, dc in next 5 sts, ch 1, skip next st, dc in next 9 sts.

Row 5: Dc in next 8 sts, ch 1, skip next st, dc in next 4 sts, [ch 1, skip next st, dc in next 2 sts] twice, ch 1, skip next st, dc in next 4 sts, ch 1, skip next st, dc in next 8 sts.

Row 6: Dc in next 8 sts, ch 1, skip next st, dc in next 2 sts, [ch 1, skip next st, dc in next 4 sts] twice, ch 1, skip next st, dc in next 2 sts, ch 1, skip next st, dc in next 8 sts.

Row 7: Dc in next 8 sts, ch 1, skip next st, dc in next 6 sts, ch 1, skip next st, dc in next 6 sts, ch 1, skip next st, dc in next 8 sts.

Row 8: Dc in next 9 sts, ch 1, skip next st, dc in next 4 sts, [ch 1, skip next st, dc in next st] twice, ch 1, skip next st, dc in next 4 sts, ch 1, skip next st, dc in next 9 sts.

Row 9: Dc in next 10 sts, [ch 1, skip next st, dc in next 2 sts] 4 times, ch 1, skip next st, dc in next 10 sts.

Row 10: Dc in next 11 sts, [ch 1, skip next st, dc in next 4 sts] twice, ch 1, skip next st, dc in next 11 sts.

Row 11: Dc in next 12 sts, [ch 1, skip next st, dc in next 3 sts] twice, ch 1, skip next st, dc in next 12 sts.

Row 12: Dc in next 13 sts, [ch 1, skip next st, dc in next 2 sts] twice, ch 1, skip next st, dc in next 13 sts.

Rows 13 and 14: Dc in next 14 sts, [ch 1, skip next st, dc in next st] twice, ch 1, skip next st, dc in next 14 sts.

Rows 15 and 16: Dc in next 15 sts, ch 1, skip next st, dc in next st, ch 1, skip next st, dc in next 15 sts.

Row 17: Dc in next 16 sts, ch 1, skip next st, dc in next 16 sts.

Row 18: Dc in next 33 sts.

continued...



Leaf IV (worked over 33 sts)

Row 1 (right side): Dc in next 33 sts.

Rows 2 and 3: Dc in next 16 sts, ch 1, skip next st, dc in next 16 sts.

Row 4: Dc in next 9 sts, [ch 1, skip next st, dc in next st] twice, [ch 1, skip next st, dc in next 2 sts] twice, [ch 1, skip next st, dc in next st] twice, ch 1, skip next st, dc in next 9 sts.

Row 5: Dc in next 8 sts, ch 1, skip next st, dc in next 6 sts, ch 1, skip next st, dc in next st, ch 1, skip next st, dc in next 6 sts, ch 1, skip next st, dc in next 8 sts.

Row 6: Dc in next 6 sts, ch 1, skip next st, dc in next 6 sts, [ch 1, skip next st, dc in next 2 sts] twice, [ch 1, skip next st, dc in next 6 sts] twice.

Row 7: Dc in next 5 sts, ch 1, skip next st, dc in next 5 sts, [ch 1, skip next st, dc in next 4 sts] twice, [ch 1, skip next st, dc in next 5 sts] twice.

Row 8: Dc in next 5 sts, [ch 1, skip next st, dc in next 10 sts] twice, ch 1, skip next st, dc in next 5 sts.

Row 9: Dc in next 4 sts, ch 1, skip next st, dc in next 3 sts, ch 1, skip next st, dc in next 6 sts, ch 1, skip next st, dc in next st, ch 1, skip next st, dc in next 6 sts, ch 1, skip next st, dc in next 3 sts, ch 1, skip next st, dc in next 4 sts.

Row 10: Dc in next 4 sts, ch 1, skip next st, dc in next st, [ch 1, skip next st, dc in next 3 sts] twice, [ch 1, skip next st, dc in next st] twice, [ch 1, skip next st, dc in next 3 sts] twice, ch 1, skip next st, dc in next st, ch 1, skip next st, dc in next 4 sts.

Row 11: Dc in next 3 sts, ch 1, skip next st, dc in next 7 sts, [ch 1, skip next st, dc in next 4 sts] twice, ch 1, skip next st, dc in next 7 sts, ch 1, skip next st, dc in next 3 sts.

Row 12: Dc in next 11 sts, [ch 1, skip next st, dc in next 4 sts] twice, ch 1, skip next st, dc in next 11 sts.

Row 13: Dc in next 12 sts, [ch 1, skip next st, dc in next 3 sts] twice, ch 1, skip next st, dc in next 12 sts.

Row 14: Dc in next 13 sts, [ch 1, skip next st, dc in next 2 sts] twice, ch 1, skip next st, dc in next 13 sts.

Row 15: Dc in next 14 sts, [ch 1, skip next st, dc in next st] twice, ch 1, skip next st, dc in next 14 sts.

Row 16: Dc in next 15 sts, ch 1, skip next st, dc in next st, ch 1, skip next st, dc in next 15 sts.

Row 17: Dc in next 16 sts, ch 1, skip next st, dc in next 16 sts.

Row 18: Dc in next 33 sts.

Leaf V (worked over 33 sts)

Row 1 (right side): Dc in next 33 sts.

Row 2: Dc in next 30 sts, ch 1, skip next st, dc in next 2 sts.

Row 3: Dc in next 3 sts, ch 1, skip next st, dc in next 7 sts, [ch 1, skip next st, dc in next st] twice, ch 1, skip next st, dc in next 17 sts.

Row 4: Dc in next 13 sts, ch 1, skip next st, dc in next st, ch 1, skip next st, dc in next 6 sts, ch 1, skip next st, dc in next st, ch 1, skip next st, dc in next 2 sts, ch 1, skip next st, dc in next 5 sts.

Row 5: Dc in next 7 sts, ch 1, skip next st, dc in next 12 sts, ch 1, skip next st, dc in next st, ch 1, skip next st, dc in next 10 sts.

Row 6: Dc in next 9 sts, ch 1, dc in next 13 sts, ch 1, skip next st, dc in next 2 sts, ch 1, skip next st, dc in next st, ch 1, skip next st, dc in next 4 sts.

Row 7: Dc in next 3 sts, ch 1, skip next st, dc in next 7 sts, ch 1, skip next st, dc in next 12 sts, ch 1, skip next st, dc in next 8 sts.

Row 8: Dc in next 7 sts, ch 1, skip next st, dc in next 11 sts, ch 1, skip next st, dc in next 10 sts, ch 1, skip next st, dc in next 2 sts.

Row 9: Dc in next 2 sts, ch 1, skip next st, dc in next 12 sts, ch 1, skip next st, dc in next 10 sts, ch 1, skip next st, dc in next 6 sts.

Row 10: Dc in next 5 sts, ch 1, skip next st, dc in next 9 sts, ch 1, skip next st, dc in next 14 sts, ch 1, skip next st, dc in next 2 sts.

Row 11: Dc in next 3 sts, ch 1, skip next st, dc in next 15 sts, ch 1, skip next st, dc in next 7 sts, ch 1, skip next st, dc in next 5 sts.

Row 12: Dc in next 4 sts, ch 1, skip next st, dc in next 6 sts, ch 1, skip next st, dc in next 16 sts, ch 1, skip next st, dc in next 4 sts.

Row 13: Dc in next 6 sts, ch 1, skip next st, dc in next st, ch 1, skip next st, dc in next 14 sts, [ch 1, skip next st, dc in next 4 sts] twice.

Row 14: [Dc in next 3 sts, ch 1, skip next st] twice, dc in next 14 sts, ch 1, skip next st, dc in next 10 sts.

Row 15: Dc in next 12 sts, [ch 1, skip next st, dc in next st] twice, ch 1, skip next st, dc in next 10 sts, ch 1, skip next st, dc in next st, ch 1, skip next st, dc in next 3 sts.

Row 16: Dc in next 2 sts, ch 1, skip next st, dc in next 5 sts, [ch 1, skip next st, dc in next st] 3 times, ch 1, skip next st, dc in next 18 sts.

Row 17: Dc in next 26 sts, [ch 1, skip next st, dc in next st] twice, ch 1, skip next st, dc in next 2 sts.

Row 18: Dc in next 33 sts.

NOTES

1. Throw consists of 20 leaf squares surrounded by Basket Weave borders. The leaf squares are arranged into five rows of four leaves each.
2. Throw is worked in one piece, back and forth in rows. The yarn color is changed to work borders and leaf squares in different colors.
3. To change yarn color, work last stitch of old color to last yarn over. Yarn over with new color and draw through all loops on hook to complete stitch. Proceed with new color. Do not fasten off old color until instructed. Carry color not in use up wrong side of piece when next needed.
4. Six balls of yarn are used in each row: Two balls of **A** for right and left side borders, and one ball for each of the four leaf squares. Use separate balls of **A** for each side border.
5. Squares can be worked following the written instructions or reading the charts. Read right side rows of charts from right to left. Read wrong side rows from left to right.

THROW

With **A**, ch 160.

Lower Border

Foundation Row (wrong side): Dc in 4th ch from hook (3 skipped ch count as first dc), dc in each remaining ch across—158 dc.

Beginning with Row 1 of pattern, work in Basket Weave pattern for 6 rows.

continued...



First Row of Squares

Row 1 (Set-Up Row – right side): With **A**, ch 3, turn, Bptr around each of next 4 sts, Fptr around each of next 4 sts, Bptr around each of next 4 sts (for beginning of Row 3 of Basket Weave pattern); with **E**, work Row 1 of Leaf I; with **D**, work Row 1 of Leaf II; with **C**, work Row 1 of Leaf III; with **F**, work Row 1 of Leaf IV; with **A**, Bptr around each of next 4 sts, Fptr around each of next 4 sts, Bptr around each of next 4 sts, dc in top of beginning ch-3 (for end of Row 3 of Basket Weave pattern).

Row 2: With **A**, ch 3, turn, Fptr around each of next 4 sts, Bptr around each of next 4 sts, Fptr around each of next 4 sts (for beginning of Row 4 of Basket Weave pattern); with **F**, work Row 2 of Leaf IV; with **C**, work Row 2 of Leaf III; with **D**, work Row 2 of Leaf II; with **E**, work Row 2 of Leaf I; with **A**, Fptr around each of next 4 sts, Bptr around each of next 4 sts, Fptr around each of next 4 sts, dc in top of beginning ch-3 (for end of Row 4 of Basket Weave pattern).

Row 3: With **A**, ch 3, turn, Fptr around each of next 4 sts, Bptr around each of next 4 sts, Fptr around each of next 4 sts (for beginning of Row 1 of Basket Weave pattern); with **E**, work Row 3 of Leaf I; with **D**, work Row 3 of Leaf II; with **C**, work Row 3 of Leaf III; with **F**, work Row 3 of Leaf IV; with **A**, Fptr around each of next 4 sts, Bptr around each of next 4 sts, Fptr around each of next 4 sts, dc in top of beginning ch-3 (for end of Row 1 of Basket Weave pattern).

Row 4: With **A**, ch 3, turn, Bptr around each of next 4 sts, Fptr around each of next 4 sts, Bptr around each of next 4 sts (for beginning of Row 2 of Basket

Weave pattern); with **F**, work Row 4 of Leaf IV; with **C**, work Row 4 of Leaf III; with **D**, work Row 4 of Leaf II; with **E**, work Row 4 of Leaf I; with **A**, Bptr around each of next 4 sts, Fptr around each of next 4 sts, Bptr around each of next 4 sts, dc in top of beginning ch-3 (for end of Row 2 of Basket Weave pattern).

Rows 5–18: Repeat Rows 1–4 three times then repeat Rows 1 and 2 once more, working the corresponding row of each Leaf pattern. For example, when working the 8th row, work Row 8 of each Leaf pattern in the order indicated. Cut **C**, **D**, **E**, and **F**. Do not cut **A**.

Second Row of Squares

Row 1 (Set-Up Row – right side): With **A**, ch 3, turn, Fptr around each of next 4 sts, Bptr around each of next 4 sts, Fptr around each of next 4 sts (for beginning of Row 1 of Basket Weave pattern); with **B**, work Row 1 of Leaf V; with **E**, work Row 1 of Leaf I; with **D**, work Row 1 of Leaf II; with **C**, work Row 1 of Leaf III; with **A**, Fptr around each of next 4 sts, Bptr around each of next 4 sts, Fptr around each of next 4 sts, dc in top of beginning ch-3 (for end of Row 1 of Basket Weave pattern).

Row 2: With **A**, ch 3, turn, Bptr around each of next 4 sts, Fptr around each of next 4 sts, Bptr around each of next 4 sts (for beginning of Row 2 of Basket Weave pattern); with **C**, work Row 2 of Leaf III; with **D**, work Row 2 of Leaf II; with **E**, work Row 2 of Leaf I; with **B**, work Row 1 of Leaf V; with **A**, Bptr around each of next 4 sts, Fptr around each of next 4 sts, Bptr around each of next 4 sts, dc in top of beginning ch-3 (for end of Row 2 of Basket Weave pattern).

Row 3: With **A**, ch 3, turn, Bptr around each of next 4 sts, Fptr around each of next 4 sts, Bptr around each of next 4 sts (for beginning of Row 3 of Basket Weave pattern); with **B**, work Row 3 of Leaf V; with **E**, work Row 3 of Leaf I; with **D**, work Row 3 of Leaf II; with **C**, work Row 3 of Leaf III; with **A**, Bptr around each of next 4 sts, Fptr around each of next 4 sts, Bptr around each of next 4 sts, dc in top of beginning ch-3 (for end of Row 3 of Basket Weave pattern).

Row 4: With **A**, ch 3, turn, Fptr around each of next 4 sts, Bptr around each of next 4 sts, Fptr around each of next 4 sts (for beginning of Row 4 of Basket Weave pattern); with **C**, work Row 4 of Leaf III; with **D**, work Row 4 of Leaf II; with **E**, work Row 4 of Leaf I; with **B**, work Row 4 of Leaf V; with **A**, Fptr around each of next 4 sts, Bptr around each of next 4 sts, Fptr around each of next 4 sts, dc in top of beginning ch-3 (for end of Row 4 of Basket Weave pattern).

Rows 5–18: Repeat Rows 1–4 three times then repeat Rows 1 and 2 once more, working the corresponding row of each Leaf pattern. Cut **B**, **C**, **D**, and **E**. Do not cut **A**.

Third Row of Squares

Row 1 (Set-Up Row – right side): With **A**, ch 3, turn, Bptr around each of next 4 sts, Fptr around each of next 4 sts, Bptr around each of next 4 sts (for beginning of Row 3 of Basket Weave pattern); with **F**, work Row 1 of Leaf IV; with **B**, work Row 1 of Leaf V; with **E**, work Row 1 of Leaf I; with **D**, work Row 1 of Leaf II; with **A**, Bptr around each of next 4 sts, Fptr around each of next 4 sts, Bptr around each of next 4 sts, dc in top of

beginning ch-3 (for end of Row 3 of Basket Weave pattern).

Row 2: With **A**, ch 3, turn, Fptr around each of next 4 sts, Bptr around each of next 4 sts, Fptr around each of next 4 sts (for beginning of Row 4 of Basket Weave pattern); with **D**, work Row 2 of Leaf II; with **E**, work Row 2 of Leaf I; with **B**, work Row 2 of Leaf V; with **F**, work Row 2 of Leaf IV; with **A**, Fptr around each of next 4 sts, Bptr around each of next 4 sts, Fptr around each of next 4 sts, dc in top of beginning ch-3 (for end of Row 4 of Basket Weave pattern).

Row 3: With **A**, ch 3, turn, Fptr around each of next 4 sts, Bptr around each of next 4 sts, Fptr around each of next 4 sts (for beginning of Row 1 of Basket Weave pattern); with **F**, work Row 3 of Leaf IV; with **B**, work Row 3 of Leaf V; with **E**, work Row 3 of Leaf I; with **D**, work Row 3 of Leaf II; with **A**, Fptr around each of next 4 sts, Bptr around each of next 4 sts, Fptr around each of next 4 sts, dc in top of beginning ch-3 (for end of Row 1 of Basket Weave pattern).

Row 4: With **A**, ch 3, turn, Bptr around each of next 4 sts, Fptr around each of next 4 sts, Bptr around each of next 4 sts (for beginning of Row 2 of Basket Weave pattern); with **D**, work Row 4 of Leaf II; with **E**, work Row 4 of Leaf I; with **B**, work Row 4 of Leaf V; with **F**, work Row 4 of Leaf IV; with **A**, Bptr around each of next 4 sts, Fptr around each of next 4 sts, Bptr around each of next 4 sts, dc in top of beginning ch-3 (for end of Row 2 of Basket Weave pattern).

continued...

Rows 5-18: Repeat Rows 1-4 three times then repeat Rows 1 and 2 once more, working the corresponding row of each Leaf pattern.

Cut **B**, **D**, **E**, and **F**. Do not cut **A**.

Fourth Row of Squares

Row 1 (Set-Up Row – right side): With **A**, ch 3, turn, Fptr around each of next 4 sts, Bptr around each of next 4 sts, Fptr around each of next 4 sts (for beginning of Row 1 of Basket Weave pattern); with **C**, work Row 1 of Leaf III; with **F**, work Row 1 of Leaf IV; with **B**, work Row 1 of Leaf V; with **E**, work Row 1 of Leaf I; with **A**, Fptr around each of next 4 sts, Bptr around each of next 4 sts, Fptr around each of next 4 sts, dc in top of beginning ch-3 (for end of Row 1 of Basket Weave pattern).

Row 2: With **A**, ch 3, turn, Bptr around each of next 4 sts, Fptr around each of next 4 sts, Bptr around each of next 4 sts (for beginning of Row 2 of Basket Weave pattern); with **E**, work Row 2 of Leaf I; with **B**, work Row 2 of Leaf V; with **F**, work Row 2 of Leaf IV; with **C**, work Row 2 of Leaf III; with **A**, Bptr around each of next 4 sts, Fptr around each of next 4 sts, Bptr around each of next 4 sts, dc in top of beginning ch-3 (for end of Row 2 of Basket Weave pattern).

Row 3: With **A**, ch 3, turn, Bptr around each of next 4 sts, Fptr around each of next 4 sts, Bptr around each of next 4 sts (for beginning of Row 3 of Basket Weave pattern); with **C**, work Row 3 of Leaf III; with **F**, work Row 3 of Leaf IV; with **B**, work Row 3 of Leaf V; with **E**, work Row 3 of Leaf I; with **A**, Bptr around each of next 4 sts, Fptr around each of next 4 sts, Bptr around each of next 4 sts, dc in top of beginning ch-3

(for end of Row 3 of Basket Weave pattern).

Row 4: With **A**, ch 3, turn, Fptr around each of next 4 sts, Bptr around each of next 4 sts, Fptr around each of next 4 sts (for beginning of Row 4 of Basket Weave pattern); with **E**, work Row 4 of Leaf I; with **B**, work Row 4 of Leaf V; with **F**, work Row 4 of Leaf IV; with **C**, work Row 4 of Leaf III; with **A**, Fptr around each of next 4 sts, Bptr around each of next 4 sts, Fptr around each of next 4 sts, dc in top of beginning ch-3 (for end of Row 4 of Basket Weave pattern).

Rows 5-18: Repeat Rows 1-4 three times then repeat Rows 1 and 2 once more, working the corresponding row of each Leaf pattern.

Cut **B**, **C**, **E**, and **F**. Do not cut **A**.

Fifth Row of Squares

Row 1 (Set-Up Row – right side): With **A**, ch 3, turn, Bptr around each of next 4 sts, Fptr around each of next 4 sts, Bptr around each of next 4 sts (for beginning of Row 3 of Basket Weave pattern); with **D**, work Row 1 of Leaf II; with **C**, work Row 1 of Leaf III; with **F**, work Row 1 of Leaf IV; with **B**, work Row 1 of Leaf V; with **A**, Bptr around each of next 4 sts, Fptr around each of next 4 sts, Bptr around each of next 4 sts, dc in top of beginning ch-3 (for end of Row 3 of Basket Weave pattern).

Row 2: With **A**, ch 3, turn, Fptr around each of next 4 sts, Bptr around each of next 4 sts, Fptr around each of next 4 sts (for beginning of Row 4 of Basket Weave pattern); with **B**, work Row 2 of Leaf V; with **F**, work Row 2 of Leaf IV; with **C**, work Row 2 of Leaf III; with **D**, work Row 2 of Leaf II; with **A**, Fptr around each of next 4 sts, Bptr around

each of next 4 sts, Fptr around each of next 4 sts, dc in top of beginning ch-3 (for end of Row 4 of Basket Weave pattern).

Row 3: With **A**, ch 3, turn, Fptr around each of next 4 sts, Bptr around each of next 4 sts, Fptr around each of next 4 sts (for beginning of Row 1 of Basket Weave pattern); with **D**, work Row 3 of Leaf II; with **C**, work Row 3 of Leaf III; with **F**, work Row 3 of Leaf IV; with **B**, work Row 3 of Leaf V; with **A**, Fptr around each of next 4 sts, Bptr around each of next 4 sts, Fptr around each of next 4 sts, dc in top of beginning ch-3 (for end of Row 1 of Basket Weave pattern).

Row 4: With **A**, ch 3, turn, Bptr around each of next 4 sts, Fptr around each of next 4 sts (for beginning of Row 2 of Basket Weave pattern); with **B**, work Row 4 of Leaf V; with **F**, work Row 4 of Leaf IV; with **C**, work Row 4 of Leaf III; with **D**, work Row 4 of Leaf II; with **A**, Bptr around each of next 4 sts, Fptr around each of next 4 sts, Bptr around each of next 4 sts, dc in top of beginning ch-3 (for end of Row 2 of Basket Weave pattern).

Rows 5-18: Repeat Rows 1-4 three times then repeat Rows 1 and 2 once more, working the corresponding row of each Leaf pattern.

Cut **B**, **C**, **D**, and **F**. Do not cut **A**.

Top Border

With **A**, beginning with Row 1 of pattern, work in Basket Weave Pattern for 7 rows. Fasten off.

FINISHING

Weave in ends. Block throw, as desired.

ABBREVIATIONS

A, **B**, **C**, **D**, **E**, and **F** = Color A, Color B, Color C, Color D, Color E, and Color F;
ch = chain; **dc** = double crochet; **st(s)** = stitch(es); **()** = work directions in parentheses into same st; **[]** = work

See diagrams on next 3 pages



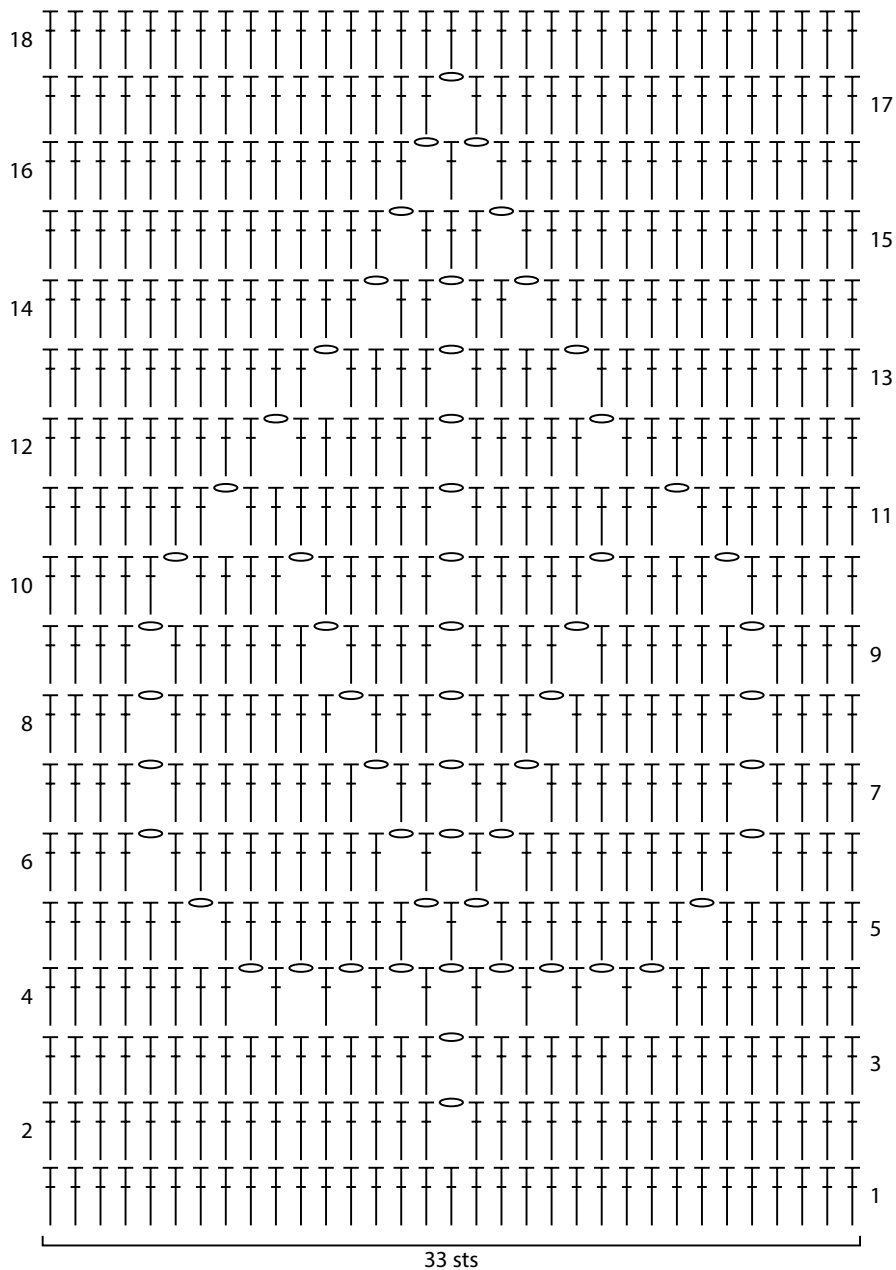


KEY

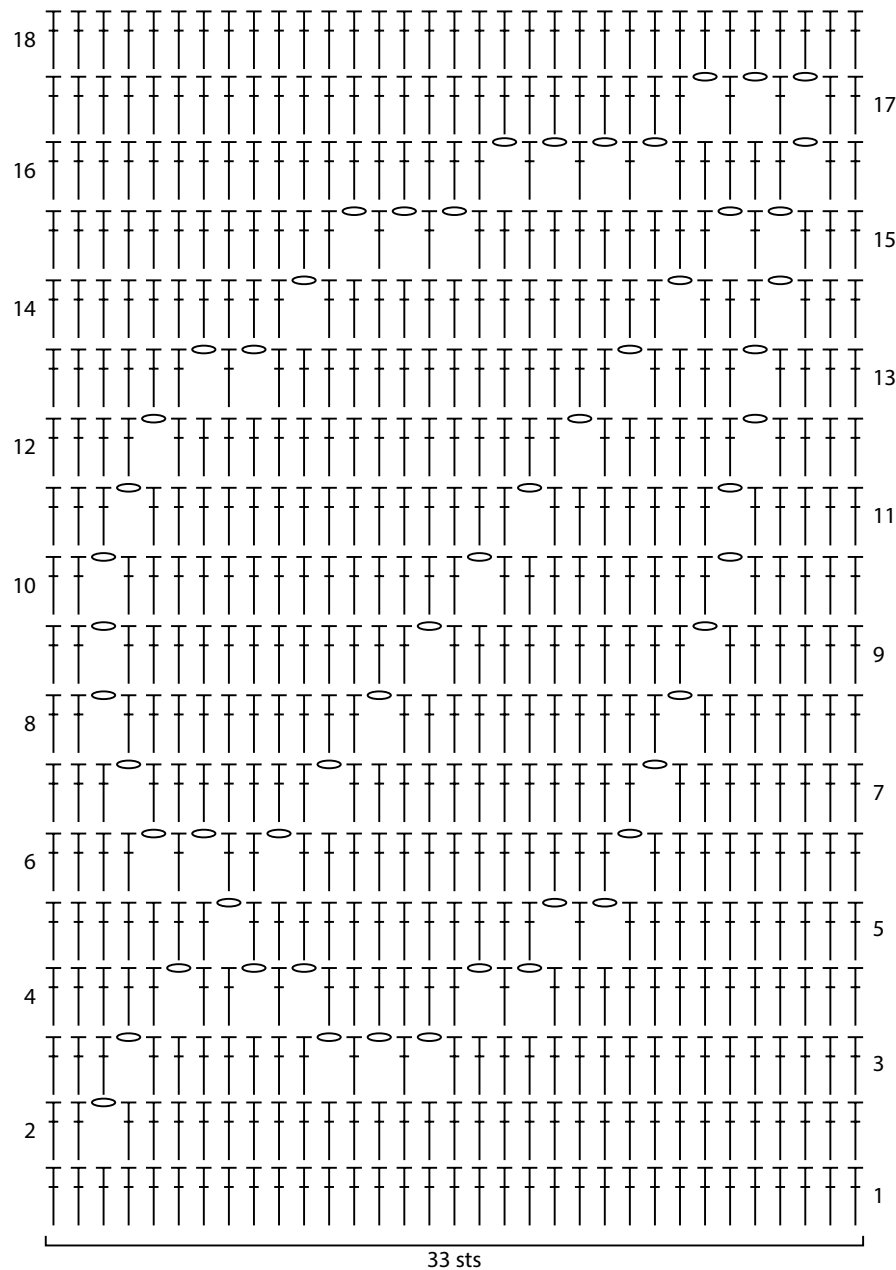
○ = chain (ch)

┆ = double crochet (dc)

Leaf I



Leaf II

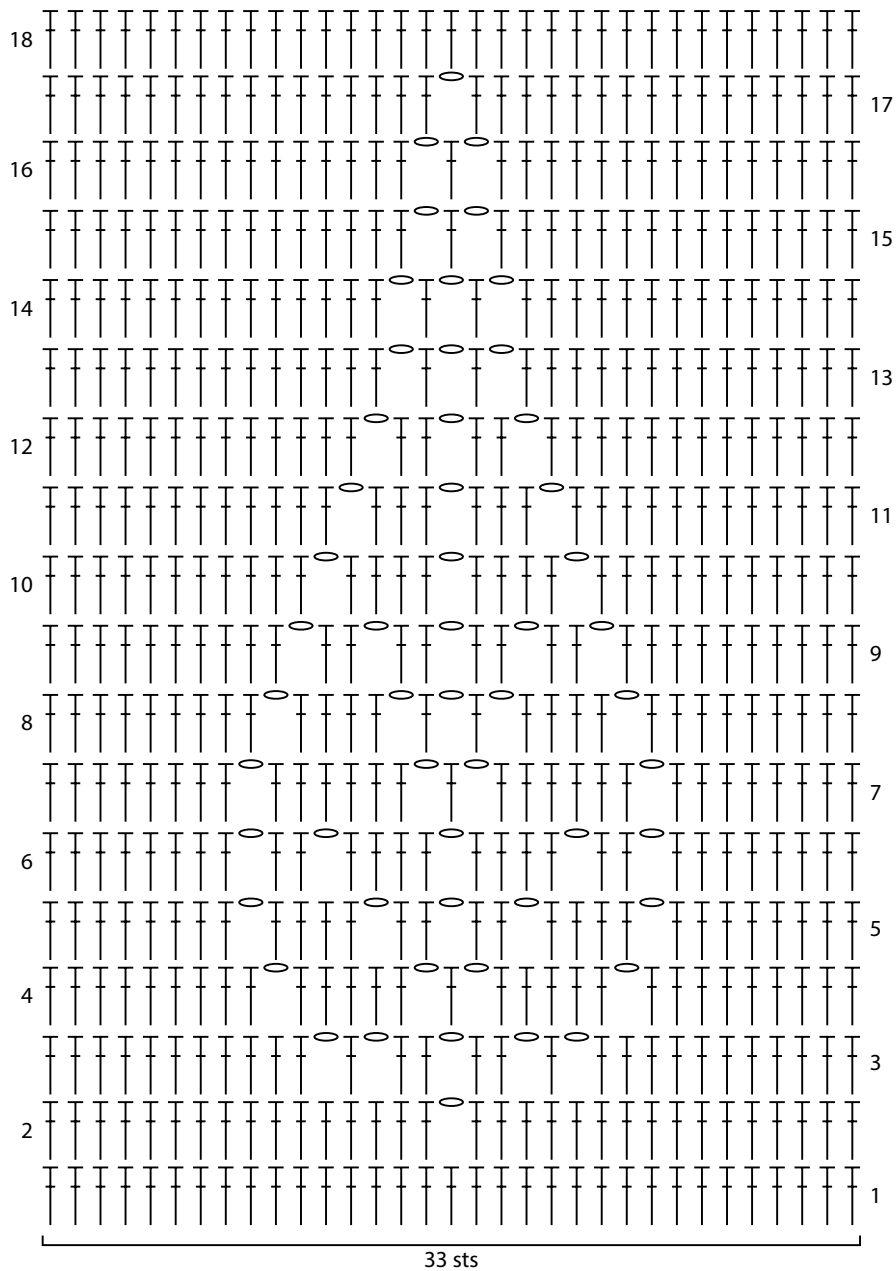


KEY

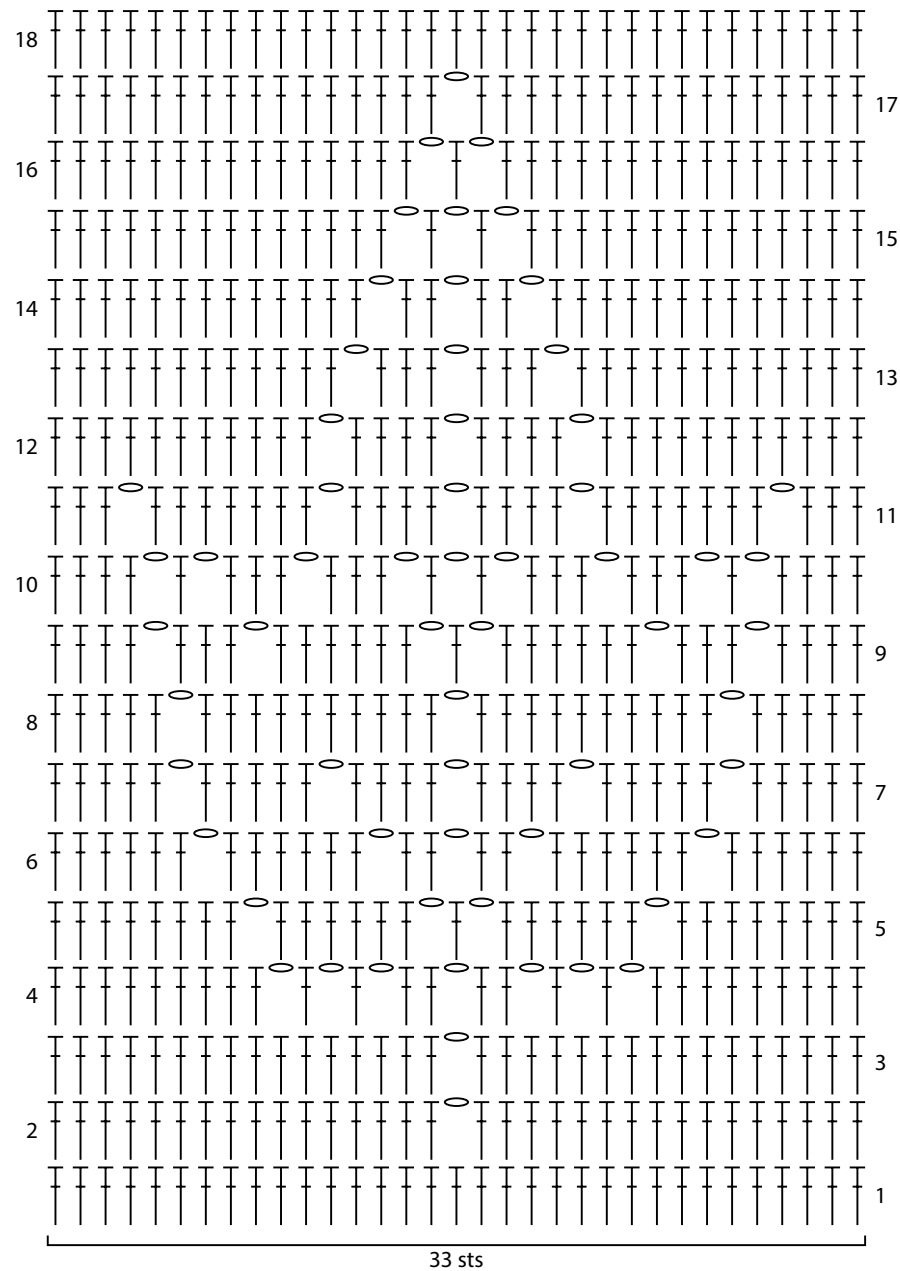
○ = chain (ch)

┆ = double crochet (dc)

Leaf III



Leaf IV



KEY

○ = chain (ch)

⌈ = double crochet (dc)

Leaf V

