



*chic sheep*   
by Marly Bird™

## Hygge Chic Throw

This modern throw is crocheted with a wonderful, interesting stitch pattern. Choose from the many shades of this soft pure merino yarn and create some hygge coziness for any resting spot in your home.



## crochet



Designed by Salena Baca

### What you will need:

**RED HEART® Chic Sheep™**: 17 balls of 5316 Linen

**Susan Bates® Crochet Hook**: 5mm [US H-8]

Yarn needle

**GAUGE**: 2 shells = 4" (10 cm); 8 rows = 3.75" (9.5 cm). **CHECK YOUR GAUGE. Use any size hook to obtain the gauge.**

### BUY YARN



**RED HEART® Chic Sheep by Marly Bird™**, Art. R170 100% Merino Wool available 3.5 oz (100 g), 200 yd (183 m) balls

**Project measures 50" [127 cm] in width, 60" [152.5 cm] in length.**

### Pattern Notes

Beginning chain 3 does not count as a stitch throughout.

### Special Stitches

#### Front Post Double Crochet 3 Together

**(fp-dc3tog)**: [yarn over hook, insert hook (from front to back to front) around post of indicated stitch and pull up a loop, yarn over and draw through 2 loops on hook] 3 times, yarn over and draw through all 4 loops on hook.

### THROW

Ch 252

**Row 1 (WS)**: Sc in 2nd ch from hook, \*ch 1, skip 4 ch, (3 dc, ch 1, 3 dc) in next ch (shell made), ch 1, skip 4 ch, sc in next ch; repeat from \* across. Turn- 25 shells.

**Row 2**: Ch 3, skip first ch-1 space, \*fp-dc3tog in next 3 dc, ch 3, sc in next ch-1 sp, ch 3, fp-dc3tog in next 3 dc\*\*, ch 1; repeat from \* across ending at \*\*, dc in last sc. Turn.

**Row 3**: Ch 3, 4 dc in first dc, \*ch 1, sc in next sc, ch 1\*\*, (3 dc, ch 1, 3 dc) in next ch-1 space; repeat from \* across ending at \*\*, 4 dc in top of tch. Turn.

**Row 4**: Ch 1, sc in first dc, \*ch 3, fp-dc3tog in next 3 dc, ch 1, fp-dc3tog in next 3 dc, ch 3\*\*, sc in next ch-1 space; repeat from \* across ending at \*\*, sc in last dc. Turn.

**Row 5**: Ch 1, sc in first sc, \*ch 1, (3 dc, ch 1, 3 dc) in next ch -1 space, ch 1, sc in next sc; repeat from \* across. Turn.

**Rows 6 - 128**: Repeat Rows 2-5, ending on a Row 4. Do not fasten off. Do Not Turn.

### EDGING

**Rnd 1**: Ch 1, \*sc evenly along edge to corner, (sc, ch 1, sc) in corner; repeat from \* around the throw, slip st to first sc. Turn.

**Rnd 2**: Ch 1, \*sc in ea sc to ch-1 space, (sc, ch 1, sc) in ch-1 space; repeat from \* around, slip st to first sc. Fasten off.

### FINISHING

Weave in all loose ends.

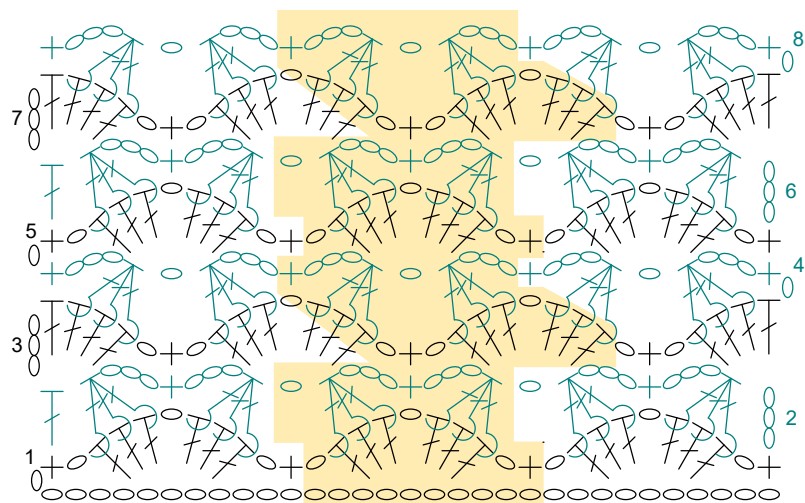
### ABBREVIATIONS

**ch** = chain; **ch-sp** = chain space; **st(s)** = stitch(es); **sl st** = slip stitch; **sc** = single crochet; **dc** = double crochet; **tch** = turning chain; **RS** = right side; **WS** = wrong side; **( )** = work directions in parentheses in same st; **[ ]** = work directions in brackets the number of times specified; \* = repeat whatever follows the \* as indicated.

**Note from Marly**: I would like to thank Salena Baca for her contribution to the Chic Sheep by Marly Bird™ collection. Salena's sense of style and design aesthetic are a perfect match for this wonderful yarn and pattern collection. Her designs are simple, fashionable and chic crochet, always a winning combination. Learn more about Salena's designs by visiting her website, salenabacacrochet.com

See next 2 pages for chart and alternate photos





Hygge Chic Throw Stitch Diagram

Symbols Key

- ch
- + sc
- ⌋ dc
- ⌋ fpdc
- ⌋ fpdc3tog
- stitch pattern repeat



