



chic sheep 
BY Marly Bird

Rainbow Chic Throw

Choose whatever colors you would like in your personal rainbow and crochet this fun throw! It's totally adaptable to any room by using colors as bright or muted as you wish.



LW6135

©2018 Coats & Clark



crochet



INTERMEDIATE

Designed by Tamara Kelly

What you will need:

RED HEART® Chic Sheep by Marly Bird™:
8 balls of 5311 Lace **A**, 1 ball each of 5619 Regal **B**, 5665 Royal **C**, 5687 VIP **D**, 5681 Suite **E**, 5620 Green Tea **F**, 5324 Mimosa **G**, 5254 Sunset **H**, 5390 Lipstick **I**

Susan Bates® Crochet Hook: 5mm [US H-8]

Yarn needle, stitch markers

GAUGE: 2 shells = 4" (10 cm); 8 rows = 4.25" (11 cm). **CHECK YOUR GAUGE. Use any size hook to obtain the gauge.**

BUY YARN



RED HEART® Chic Sheep by Marly Bird™, Art. R170 100% Merino Wool available 3.5 oz (100 g), 186 yd (170 m) balls

Project measures 51" [129.5 cm] in width, 60" [152.5 cm] in length.

Pattern Notes

Only turn after even numbered rows (indicated in pattern). Color **A**'s loop remains active throughout project, use a stitch marker in the loop to keep it open while crocheting with the other colors.

Special Stitches

2 Treble Crochet Cluster (2 tr-cl): [yarn over hook twice, insert hook in indicated stitch and pull up a loop, (yarn over and draw through 2 loops on hook) twice] repeat once more in same stitch, yarn over and draw through all 3 loops on hook.

Shell: (3 dc, ch 1, 3 dc) in indicated ch-space

THROW

Ch 177 with **A**

Row 1 (WS): Sc in 2nd ch from hook, ch 1, *sc in next ch, ch 4, skip 4 ch, sc in next ch**, ch 2, skip 1 ch; repeat from * ending at **, ch 1, sc in last ch. Do not turn, remove hook from loop and place marker in loop to secure- 25 ch-4 spaces.

Row 2: Join **B** to first sc with sc leaving a 6" tail, shell in next ch-4 space, *sc in next ch-2 sp, shell in next ch-4 space; repeat from * across, sc in last sc. Fasten off **B** leaving a 6" tail. Turn -25 shells.

Row 3: Insert hook in Color **A** loop and remove marker, ch 1, slip st in first sc, ch 6 (counts as tr, ch-2 sp), 2 tr-cl in same sc, ch 2, skip shell, *(2 tr-cl, ch 4, 2 tr-cl) in next sc, ch 2, skip shell; repeat from * across, (2 tr-cl, ch 2, tr) in last sc. Do not turn, remove hook from loop and place marker in loop to secure.

Row 4: Join **C** with dc to 4th ch of beginning ch-6 leaving a 6" tail, 3 dc in next ch-2 space, sc in ch-1 space of next shell 1 row below (enclosing the ch-2 space from previous row), *shell in next ch-4 space, sc in ch-1 space of next shell 1 row below; repeat from * across, 3 dc in last ch-2 space, dc in last tr. Fasten off **C** leaving a 6" (15 cm) tail. Turn.

Row 5: Insert hook in Color **A** loop and remove marker, ch 2, slip st in first dc, ch 1, sc in same dc, ch 1, (2 tr-cl, ch 4, 2 tr-cl) in next sc, *ch 2, (2 tr-cl, ch 4, 2 tr-cl) in next sc; repeat from * across, ch 1, sc in last dc. Do not turn, remove hook from loop and place marker in loop to secure.

Row 6: Join **D** to first sc with sc leaving a 6" (15 cm) tail, shell in next ch-4 space, *sc in ch-1 space of next shell 1 row below, shell in next ch-4 space; repeat from * across, sc in last sc. Fasten off **D** leaving a 6" (15 cm) tail. Turn.

Rows 7-112: Repeat Rows 3-6 changing colors every even numbered row in the following order: **B, C, D, E, F, G, H, I**; ending on a Row 4.

Row 113: Insert hook in Color **A** loop and remove marker, ch 2, slip st in first dc, ch 1, sc in same dc, *(tr, 4 dc, tr) in next sc,** sc in next ch-1 space; repeat from * across ending at **, sc in last dc. Turn, remove hook from loop and place marker in loop to secure-176 sts.

continued...





FINISHING

Weave in all loose ends of Color **A**.

Border Fringe

Add additional fringe to both ends of each even numbered row. Trim to desired length (2" [5 cm] shown).

Edging

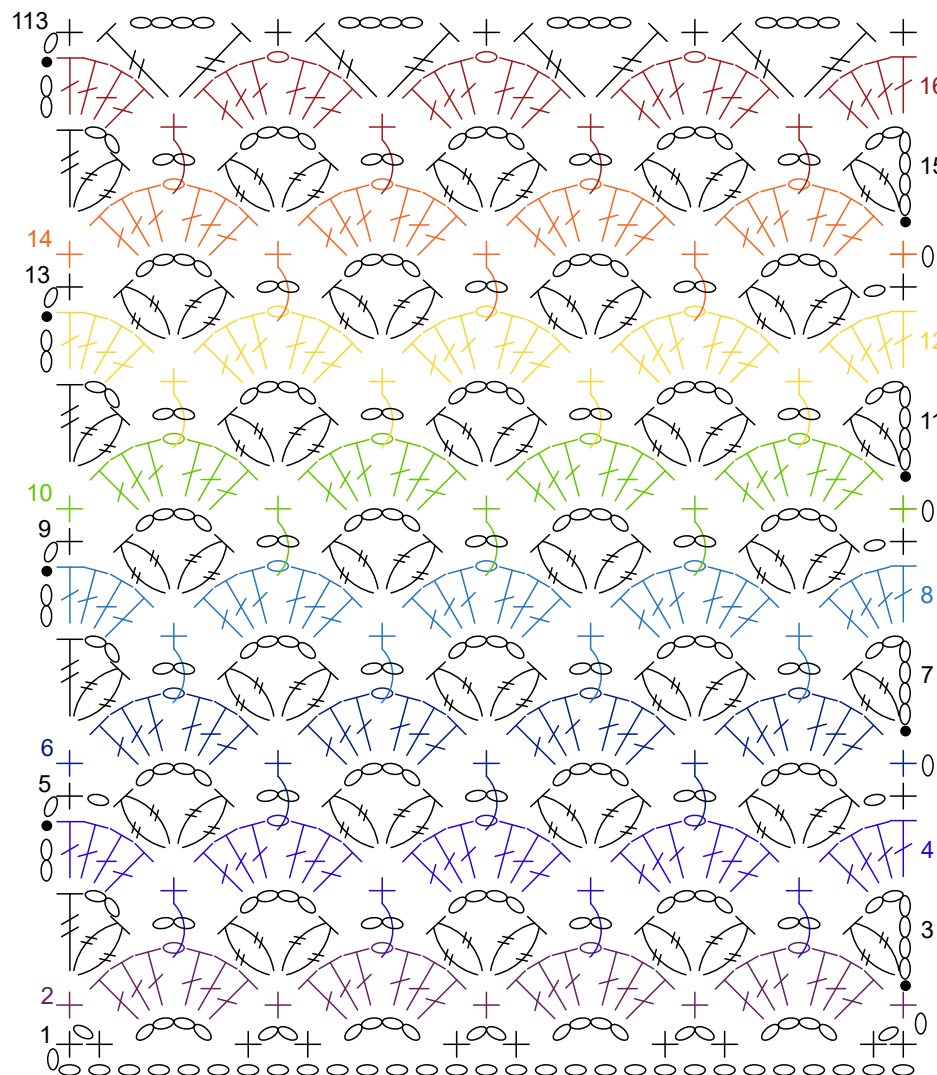
Round 1 (RS): Insert hook in Color **A** loop and remove marker, ch 1, sc in each st across Row 113, ch 1, hdc evenly along sides of rows pushing tassels to the front, ch 1, hdc across foundation chain, ch 1, hdc evenly along sides of rows pushing tassels to the front, ch 1, join to first sc with slip st. Do not Turn.

Round 2: Ch 1, (sc, dc) in first st, skip next st, *(sc, dc) in next st, skip next st; rep from * around; join with slip st to first sc. Fasten off and weave in ends.

ABBREVIATIONS

ch = chain; st(s) = stitch(es); sc = single crochet; dc = double crochet; tr = treble crochet; tch = turning chain; RS = right side; WS = wrong side; () = work directions in parentheses in same st; [] = work directions in brackets the number of times specified; * = repeat whatever follows the * as indicated.

Note from Marly: I would like to thank my long time friend and fellow designer Tamara Kelly for her contribution to the Chic Sheep by Marly Bird™ collection. Tamara's beautiful design combines some of my favorite colors of Chic Sheep yarn in a stunning blanket. To learn more about Tamara Kelly and her designs visit mooglyblog.com



Color Key

- A
- B
- C
- D
- E
- F
- G
- H
- I

Symbols Key

- ch
- sl st
- + sc
- ∟ dc
- ∟ tr
- ∟ 2 tr-cl

