



CROCHET | SKILL LEVEL: **INTERMEDIATE**

## ABBREVIATIONS

**Approx** = Approximately

**Beg** = Beginning

**Ch** = Chain(s)

**Dc** = Double crochet

**Dc2tog** = (Yoh and draw up a loop in next stitch. Yoh and draw through 2 loops on hook) twice. Yoh and draw through all 3 loops on hook

**Dc join** = Yoh and pull up a loop. Yoh and draw through 2 loops on hook. Insert hook in adjacent stitch on Motif Panel. Yoh and pull through stitch on Motif panel and 2 loops on hook

**2(3-4) dc-cl = [2 (3-4) Double Crochet Cluster]**. (Yoh and draw up a loop. Yoh and draw through 2 loops on hook) 2 (3-4) times in same stitch. Yoh and draw through all 3 (4-5) loops on hook.

**Hdc** = Half double crochet

**Picot** = Ch 6. Sl st in 5th ch from hook. Ch 1

**PM** = Place marker

**Rep** = Repeat

**RS** = Right side

**Sc** = Single crochet

**Sc2tog** = Draw up a loop in each of next 2 sc. Yoh and draw through all 3 loops on hook

**Shell** = [(2 dc-cl. Ch 2) twice. 2 dc-cl] in indicated space or stitch

**Sl st** = Slip stitch

**Sp(s)** = Space(s)

**St(s)** = Stitch(es)

**Tch** = Turning chain

**Tog** = Together

**V-st** = (1 dc. Ch 1. 1 dc) in in indicated stitch

**WS** = Wrong side

**Yoh** = Yarn over hook

## MATERIALS

**RED HEART® Soft Essentials™** (5 oz/141 g; 131 yds/120 m)

**Contrast A** Cocoa (7340) **6 balls**

**Contrast B** Biscuit (7305) **5 balls**

**Contrast C** Cream (7103) **4 balls**

Size K/10½ (6.5 mm) crochet hook **or size needed to obtain gauge.**  
Stitch markers. Yarn needle.

## MEASUREMENTS

Approx 47" x 65" [119.5 x 165 cm].

## GAUGE

12 dc and 6 rows = 8" [20.5 cm].

## INSTRUCTIONS

### Notes:

- Ch 2 at beg of row counts as hdc.
- Ch 3 at beg of row counts as dc.
- Ch 4 at beg of row counts as dc and ch-1 sp.
- Ch 5 at beg of row counts as dc and ch-2 sp.
- Ch 6 at beg of row counts as dc and ch-3 sp.
- Throw is constructed of 3 motif panels with a striped section between each motif panel. The striped section joins to the end panels on the last row. Each motif panel is made of 6 motifs. See Assembly Layout for assistance.

## THROW

### SOLID COLOR MOTIF (Make 3 in A, 3 in B and 3 in C)

See Chart on page 6.



Ch 5. Join with sl st to a form ring.

**1st rnd:** Ch 5. (1 dc in ring. Ch 2) 7 times. Join with sl st to 3rd ch of beg ch-5. 8 dc.

**2nd rnd:** Ch 3 (**does not** count as a dc). 3 dc-cl in same sp as sl st. \*Ch 5. Skip ch-2 sp. 4 dc-cl in next dc. Rep from \* around. Ch 5. Join with sl st to first st.

**3rd rnd:** Slip st in next ch-sp. Ch 1. \*(3 sc. Ch 2. 3 sc) in ch-5 sp. Ch 1. Skip next dc-cl. Rep from \* around. Join with sl st to first sc. 8 ch-2 sps and 8 ch-1 sps.

**4th rnd:** Sl st in each sc to next ch-2 sp. Ch 1. 1 sc in ch-2 sp. \*Ch 4. 1 sc in next ch-1 sp. Ch 4. 1 sc in next ch-2 sp. Ch 4. (1 tr. Picot. 1 tr) in next ch-1 sp. Ch 4\*\*. 1 sc in next ch-2 sp. Rep from \* around ending at \*\*. Join with sl st to first sc. 16 ch-4 sps.

**5th rnd:** Ch 1. 4 sc in each of next 3 ch-4 sps. \*4 sc in corner ch-sp (formed by picot). PM in second sc\*\*. 4 sc in each of next 4 ch-4 sps. Rep from \* around ending at \*\*. 4 sc in last ch-4 sp. Join with sl st to first sc.

**6th rnd:** Ch 1. \*1 sc in each sc across to marker. 2 sc in each of next 2 sc. Rep from \* around. 1 sc in each sc around. Join with sl st to first sc. Fasten off.

## MULTI COLOR MOTIF

See Chart on page 6.



Make 3 of each of the following motifs, for a total of 9 motifs.

Work as given for Solid Color Motif changing colors in following order:

**Motif ABC:** Rounds 1-2 Color A, Round 3 Color B, Rounds 4-6 Color C.

**Motif BCA:** Rounds 1-2 Color B, Round 3 Color C, Rounds 4-6 Color A.

**Motif CAB:** Rounds 1-2 Color C, Round 3 Color A, Rounds 4-6 Color B.

## MOTIF PANEL (Make 3 panels).

With RS facing, whip stitch motifs tog to form a panel. Place motifs in following order: CAB, A, ABC, B, BCA, C.

## STRIPED SECTION

See Chart on page 5.

**1st row:** (RS). Working on a long edge of middle motif panel, join C on right side in corner with slip st. Ch 3 (counts as dc). 1 dc in same st. 1 dc in each sc across. Join A. Fasten off C. Turn. 133 dc.

**2nd row:** Ch 1. 1 sc in first dc. \*Ch 6. Skip 5 dc. 1 sc in next dc. Rep from \* across. Turn. 22 ch-6 sps.

**3rd row:** Ch 1. 1 sc in first sc. (1 sc. 1 hdc. 5 dc. 1 hdc. 1 sc) in each ch-6 sp across. 1 sc in last sc. Join C. Fasten off A. Turn.

**4th row:** Ch 5. Skip first (2 sc. 1 hdc. 2 dc). \*1 sc in next dc. Ch 5. Skip next 8 sts. Rep from \* to last 5 sts. Ch 2. 1 dc in last sc. Turn.

**5th row:** Ch 3. 2 dc in next ch-2 sp. 1 dc in next sc. \*5 dc in next ch-5 sp. 1 dc in next sc. Rep from \* across to tch. 2 dc in tch-sp. 1 dc in 3rd ch of tch. Join B. Fasten off C. Turn. 133 dc.

**6th row:** Ch 1. (1 sc. Ch 2. 4 dc) in first dc. \*Skip next 3 dc. (1 sc. Ch 2. 4 dc) in next dc (small shell made). Rep from \* across to last 4 sts. 1 sc in top of tch. Turn. 33 small shells.

**7th row:** Ch 2. \*Skip next dc. Dc2tog. Skip next dc. Ch 3. 1 sc in next ch-2 sp. Rep from \* across. Turn.



**8th row:** Ch 1. (1 sc. Ch 2. 4 dc) in first sc. \*Skip next (Ch-3 sp, Dc2tog). (1 sc. Ch 2. 4 dc) in next sc. Rep from \* across. 1 sc in top of tch. Turn.

**9th row:** Ch 2. \*Skip next dc. Dc2tog. Skip next dc. Ch 3. 1 sc in next ch-2 sp. Rep from \* across. Fasten off. **Do not** turn.

With RS facing, join A with sl st to top of tch of 9th row.

**10th row:** (RS). Ch 1. 1 sc in same sp as sl st. \*1 sc in Dc2tog. 2 sc in next ch-3 sp. 1 sc in next sc. Rep from \* across. Turn. 133 sc.

**11th row:** Ch 1. 1 sc in first sc. \*Ch 3. Skip next 2 sc. 4 dc-cl in next sc. Ch 3. Skip next 2 sc. 1 sc in next sc. Rep from \* across. Turn. 22 dc-cl.

**12th row:** Ch 5. 1 sc in first dc-cl. \*Ch 2. 1 dc in next sc. Ch 2. 1 sc in next dc-cl. Rep from \* across. Ch 2. 1 dc in last sc. Turn.

**13th row:** Ch 1. 1 sc in first dc. \*2 sc in next ch-2 sp. 1 sc in next sc \*\*. 2 sc in next ch-2 sp. 1 sc in next dc. Rep from \* across ending at \*\*. 2 sc in tch-sp. 1 sc in 3rd ch of tch. Join C. Fasten off A. Turn. 133 sts.

**14th row:** Ch 1. 1 sc first sc. 1 sc in each of next 2 sc. Skip next 3 sc. \*Shell in next sc. Skip next 3 sc. 1 sc in next sc. Skip next 3 sc. Rep from \* to last 3 sc. Shell in next sc. Skip next 3 sc. 1 sc in each of last 3 sc. Join B. Fasten off C. Turn. 16 shells.

**15th row:** Ch 3. 1 dc in each of next 2 sc. \*Ch 3. Skip next (dc-cl, ch-2 sp). 1 sc in next dc-cl. Ch 3. 1 dc in next sc. Rep from \* to last 2 sc. 1 dc in each of last 2 sc. Turn.

**16th row:** Ch 3. 1 dc in next dc. (2 dc-cl. Ch 2. 2 dc-cl) in next dc. \*1 sc in next sc. Shell in next dc. Rep from \* to last sc. 1 sc in last sc (2 dc-cl. Ch 2. 2 dc-cl) in next dc. 1 dc in next dc. 1 dc in top of tch. Join A. Fasten off B. Turn.

**17th row:** Ch 1. 1 sc in each of first 2 dc. 1 sc in dc-cl. \*Ch 3. Skip next (ch-2 sp, dc-cl). 1 dc in next sc. Ch 3. Skip next (dc-cl, ch-2 sp). 1 sc in next dc-cl. Rep from \* across. 1 sc in next dc. 1 sc in top of tch. Turn.

**18th row:** Ch 1. 1 sc in each of first 3 sc. \*Shell in next dc. 1 sc in next sc. Rep from \* across. 1 sc in each of last 2 sc. Join C. Fasten off A. Turn.

**19th row:** Ch 3. 1 dc in each of next 2 sc. \*Ch 3. Skip next (dc-cl, ch-2 sp). 1 sc in next dc-cl. Ch 3. 1 dc in next sc. Rep from \* to last 2 sc. 1 dc in each of last 2 sc. Turn.

**20th row:** Ch 3. 1 dc in each of next 2 dc. 3 dc in next ch-3 sp. \*1 dc in next sc. 3 dc in ch-3 sp. 1 dc in next dc. 3 dc in ch-3 sp. Rep from \* to last 3 dc. 1 dc in each of next 2 dc. 1 dc in top of tch. Turn. 133 dc.

**21st row:** Ch 3. 1 dc in next dc. Skip next dc. \*V-st in next dc. Skip 2 dc. Rep from \* to last 4 dc. V-st in next dc. Skip next dc. 1 dc in next dc. 1 dc in top of tch. Turn.

**22nd row:** Ch 3. 1 dc in each dc and ch-1 sp across. 1 dc in top of tch. Join B. Fasten off C. Turn. 133 dc.

**23rd row:** Ch 5. Skip first 3 dc. \*1 dc in next 2 dc. Ch 2. Skip 2 dc. Rep from \* across. 1 dc in next dc. 1 dc in top of tch. Join A. Fasten off B. Turn.

**24th row:** Ch 1. 1 sc in first dc. 1 sc in next dc. \*Working over chain, 1 dc in 2 skipped sts from 23rd row\*\*. 1 sc in each of next 2 dc. Rep from \* across to tch ending at \*\*. 1 sc in 3rd ch of tch. Join B. Fasten off A. Turn. 133 sts.

**25th row:** Ch 1. 1 sc in first sc. \*Ch 3. Skip next 2 sts. (1 sc. Ch 3. 1 sc) in next sc. Rep from \* to last 4 sts. Ch 3. 1 sc in last sc. Turn.

**26th row:** Ch 1. 1 sc in first sc. \*Ch 2. Skip next ch-3 sp. (1 sc. Ch 3. 2 sc. Ch 3. 1 sc) in next ch-3 sp. Rep from \* to last ch-3 sp. Ch 2. 1 sc in last sc. Turn.

**27th row:** Ch 6. \*1 sc in next ch-3 sp. Ch 1. 1 sc in next ch-3 sp. Ch 3. Rep from \* across. 1 dc in last sc. Join C. Fasten off B. Turn.

**28th row:** Ch 2. \*2 hdc in next ch-3 sp. 1 hdc in next sc. Skip next ch-1 sp. 1 hdc in next sc. Rep from \* to last tch. 3 hdc in tch-sp. 1 hdc in 3rd ch of tch. Turn. 133 hdc.

**29th row:** Ch 2. 1 hdc in each hdc across. Turn.

**30th row:** Ch 2. 1 hdc in back loop only of each hdc across. Join A. Fasten off C. Turn.

**31st row:** Ch 3. \*1 dc in next hdc. 1 dc around post of dc just made. Skip next hdc. Rep from \* across. 1 dc in next dc. 1 dc in top of tch. Turn.

**32nd row:** Ch 3. 1 dc in each dc across. 1 dc in top of tch. Turn.

**33rd row:** Ch 3. \*1 dc in next dc. 1 dc around post of dc just made. Skip next dc. Rep from \* across. 1 dc in next dc. 1 dc in top of tch. Join B. Fasten off A. Turn.

**34th row:** Ch 3. 1 dc in each dc across. 1 dc in top of tch. Fasten off B. **Do not** turn.

With RS facing, Join C with sl st to top of tch on 34th row.

**35th row:** Ch 1. Sl st loosely in each dc across. Fasten off C. **Do not** turn.

**Note:** Next row joins the edge motif panel to the striped section. Motif panel has 133 sts along the long edge to match the 133 sts in the striped section. Motif Panel has 22 sts along the first 5 motifs and 23 sts along the last motif's edge). Join B with sl st in top of tch of 34th row.

**36th row:** Ch 3. 1 dc join in each st on 34th row (behind sl st of 35th row) joining Motif Panel as you work. Fasten off B.

Rep 1st to 36th rows on opposite side of the middle motif panel.

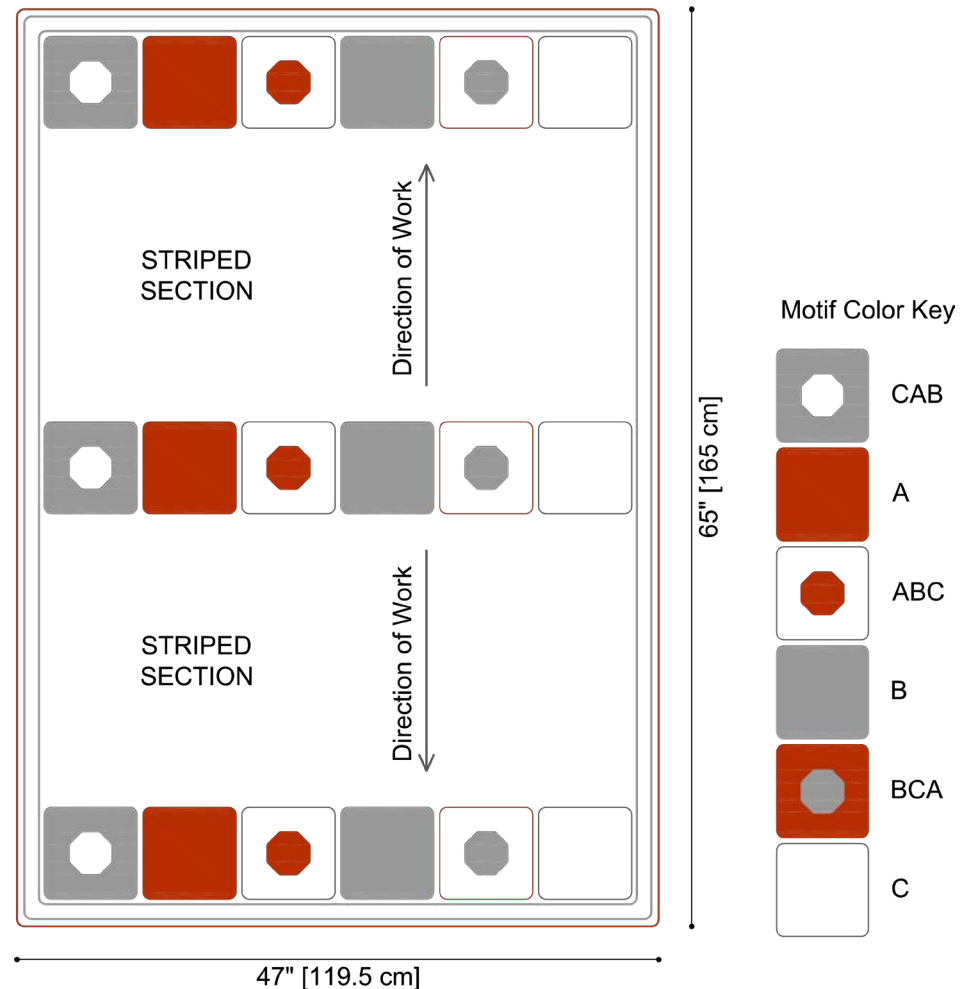
## BORDER

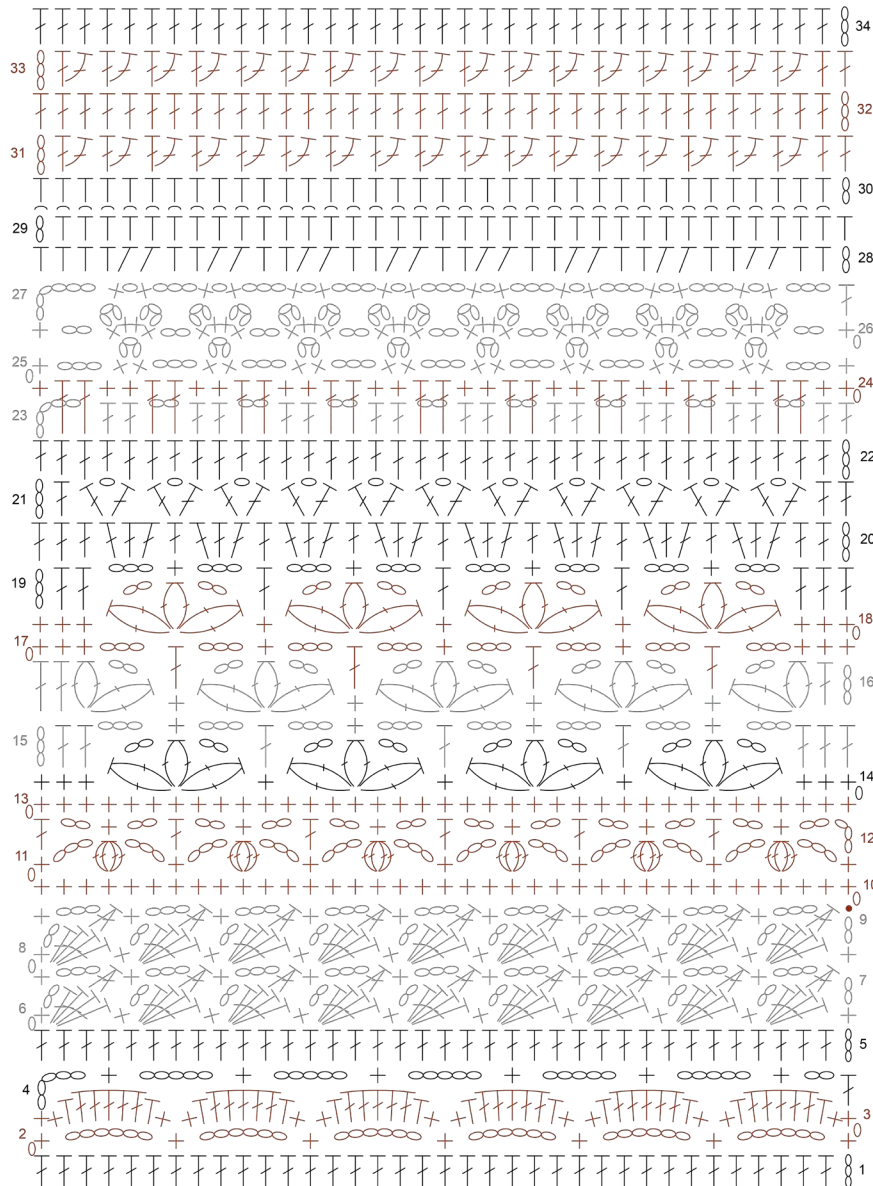
**1st rnd:** Join A with slip st to corner on edge Motif Panel. \*1 sc in each sc across Motif Panel to corner. 2 sc in each of next corner 2 sc. 1 sc in each sc across motif panel. 1 sc evenly along edge of Striped Section. 1 sc in each sc across Motif Panel to corner. 2 sc in each of next corner 2 sc. Rep from \* around. Join with sl st to first sc.

**2nd rnd:** Ch 1. \*1 sc in each sc to corner. 2 sc in each of next corner 2 sc. Rep from \*around. Join with sl st to first sc. Join B. Fasten off A.

**3rd rnd:** Ch 3. \*1 dc in each sc to corner. 2 dc in each of next corner 2 dc. Rep from \* around. Join with sl st to top of tch. Join A. Fasten off B.

**4th rnd:** Ch 1. \*1 sc in each sc to corner. 2 sc in each of next corner 2 sc. Rep from \* around. Join with sl st to first sc. Fasten off A.





Striped Stitch Diagram

### Color Key

- A
- B
- C

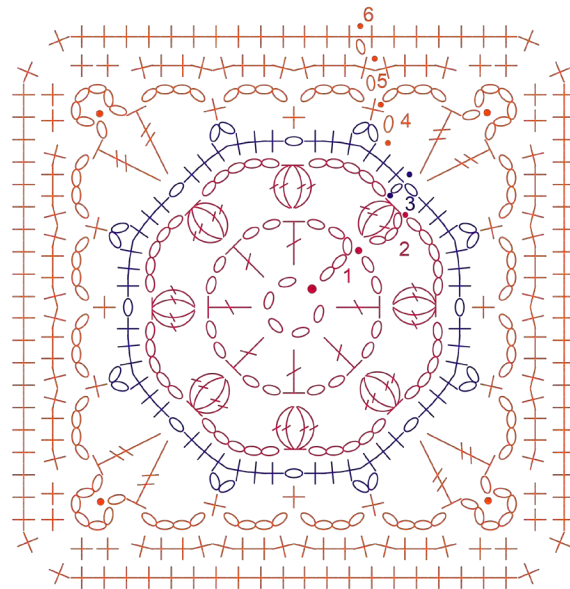
### Symbols Key

- backloop
- ch
- sl st
- sc
- hdc
- dc
- dc2tog
- 2dc-cl
- 4dc-cl

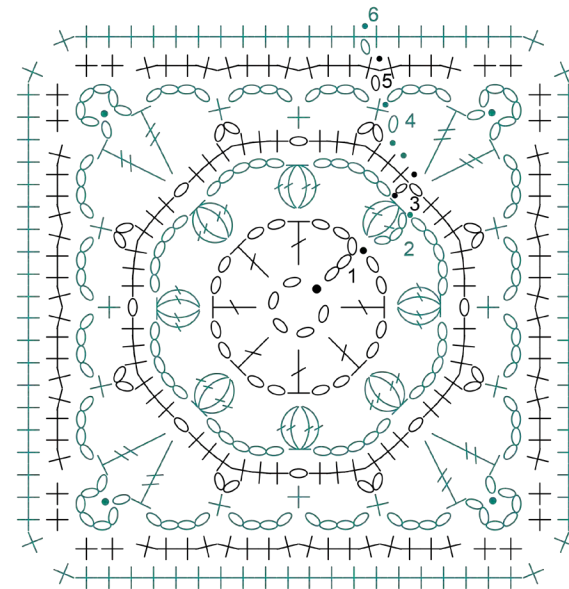
### Color Key

Motif: BCA CAB ABC

	B		C		A
	C		A		B
	A		B		C



Multi Color  
Motif Stitch Diagram



Solid Color  
Motif Stitch Diagram

### Symbols Key

- ch
- sl st
- + sc
- ⊗ 4dc-cl
- ⊗ 3dc-cl
- ⌋ dc
- ⌋ tr