



CROCHET | SKILL LEVEL: INTERMEDIATE

## ABBREVIATIONS

**Approx** = Approximately

**Beg** = Beginning

**Ch** = Chain(s)

**Cl (3-dc cluster)** = (Yoh and draw through 2 loops on hook) 3 times in indicated stitch. Yoh and draw through all 4 loops

**Hdc** = Half double crochet

**Dc** = Double crochet

**Dc3tog** = (Yoh and draw up a loop in next st. Yoh and draw through 2 loops on hook) 3 times. Yoh and draw through all 4 loops on hook

**Rep** = Repeat

**Rnd(s)** = Round(s)

**RS** = Right side

**Sc** = Single crochet

**Sl st** = Slip stitch

**Sp(s)** = Space(s)

**St(s)** = Stitch(es)

**Tr** = Treble crochet

**Tr3tog** = [(Yoh) twice. Draw up a loop in next st. Yoh and draw through 2 loops on hook] 3 times Yoh and draw through all 4 loops on hook

**Trfp** = (Yoh) twice and draw up a loop around post of next st at front of work inserting hook from right to left. (Yoh and draw through 2 loops on hook) 3 times

**WS** = Wrong side

**Yoh** = Yarn over hook

## MEASUREMENTS

Approx 46" x 57" [117 cm x 145 cm]

## GAUGE

10 dc and 6 rows = 4" [10 cm].

## INSTRUCTIONS

### Notes:

- When working in fair isle technique, carry color not in

use loosely along top edge and work sts around color not in use. To change color, work to last 2 loops on hook and draw new color through last 2 loops, then proceed in new color.

- Ch 2 at beg of row counts as hdc.
- Ch 3 at beg of row counts as dc.
- Ch 4 at beg of row counts as tr.

## MATERIALS

**Red Heart® With Love™** (7 oz/198 g; 370 yds/338 m)

**Contrast A** Eggshell (1101) **4 balls**

**Contrast B** Black (1012) **2 balls**

Size U.S. J/10 [6 mm] crochet hook **or sizes needed to obtain gauge.**  
Yarn needle.

With A, ch 115. See diagram on page 3.

**1st row:** (RS). 1 dc in 4th ch from hook and in each ch to end of chain. Turn. 113 dc. Join B. Fasten off A.

**2nd row:** Ch 2 (counts as hdc). 1 hdc in each st to end of row. Turn. 113 hdc. Join A. Fasten off B.

**3rd row:** Ch 1. 1 sc in first hdc. \*1 hdc in next hdc. 1 dc in next hdc. 1 tr in next hdc. 3 tr in next hdc. 1 tr in next hdc. 1 dc in next hdc. 1 hdc in next hdc. 1 sc in next hdc. Rep from \* to end of row. Turn. Join B. Fasten off A.

**4th row:** Ch 3. Skip next hdc. (1 dc in each of next 3 sts. 3 dc in next st. 1 dc in each of next 3 sts. Dc3tog over next 3 sts) 13 times. 1 dc in each of next 3 sts. 3 dc in next st. 1 dc in each of next 3 sts. Skip next st. 1 dc in last st. Turn. Join A. Fasten off B.

**5th row:** Ch 4. Skip next st. (1 tr in next st. 1 dc in next st. 1 hdc in next st. 1 sc in next st. 1 hdc in next st. 1 dc in next st. 1 tr in next st. Tr3tog over next 3 sts) 13 times. 1 tr in next st. 1 dc in next st. 1 hdc in next st. 1 sc in next st. 1 hdc in next st. 1 dc in next st. 1 tr in next st. Skip next st. 1 tr in last st. Turn. Join B. Fasten off A.

**6th row:** Ch 2. 1 hdc in each st to end of row. Turn. 113 hdc. Join A. Fasten off B.

**7th to 9th rows:** Ch 3. 1 dc in each st to end of row. Turn.

**10th row:** With A, ch 1. 1 sc in each of first 4 dc. \*With B, Cl in next dc. With A, 1 sc in each of next 7 dc. Rep from \* to last 5 dc. With B, Cl in next dc. With A, 1 sc in each of last 4 dc. Turn.

**11th row:** With A, ch 3. 1 dc in each st to end of row. Turn.

**12th row:** Ch 1. 1 sc in each of first 8 dc. \*With B, Cl in next dc. With A, 1 sc in each of next 7 dc. Rep from \* to last 9 dc. With B, Cl in next dc. With A, 1 sc in each of last 8 dc. Turn.

**13th row:** Ch 3. 1 dc in each st to end of row. Turn.

**14th to 17th rows:** As 10th to 13th rows.

**18th row:** As 10th row.

**19th to 21st rows:** Ch 3. 1 dc in each st to end of row. Turn.

**22nd row:** Ch 1. 1 sc in each dc to end of row. Turn. Join B. **Do not** fasten off A.

**23rd to 24th rows:** With B, ch 1. 1 sc in each sc to end of row. Turn. Join A. **Do not** fasten off B.

**25th row:** Ch 1. 1 sc in each of first 3 sc. Trfp around 6th sc 3 rows below. (1 sc in each of next 4 sc of current row. Trfp around next sc 3 rows below (after last trfp). Skip next 4 sc 3 rows below. Trfp around next sc 3 rows below) 17 times. 1 sc in each of next 4 sc of current row. Trfp around next sc 3 rows below (after last trfp). 1 sc in each of last 2 sc. Turn.

**26th row:** Ch 1. 1 sc in each st to end of row. Turn. Join B. **Do not** fasten off A.

**27th and 28th rows:** Ch 1. 1 sc in each sc to end of row. Turn.

**29th row:** Ch 1. 1 sc in each of first 5 sc. Trfp around top of first trfp 4 rows below (so that new st **does not** slide down post of old st). Trfp around top of next trfp 4 rows below. (1 sc in each of next 4 sc on current row. Trfp around top of each of next 2 trfp 4 rows below) 17 times. 1 sc in each of last 4 sc. Turn.

**30th to 32nd rows:** As 26th to 28th rows.

**33rd row:** Ch 1. 1 sc in each of first 3 sc. Trfp around top of first trfp 4 rows below. (1 sc in each of next 4 sc on current row. Trfp around top of each of next 2 trfp 4 rows below)

17 times. 1 sc in each of next 4 sc on current row. Trfp around top of next trfp 4 rows below. 1 sc in each of last 2 sc. Turn.

**34th to 36th rows:** As 26th to 28th rows. Join A. Fasten off B.

**37th and 38th rows:** With A, as 29th and 30th rows.

**39th to 53rd rows:** As 7th to 21st rows.

**54th to 58th rows:** As 2nd to 6th rows.

**59th to 62nd rows:** As 3rd to 6th rows.

**63rd to 118th rows:** As 3rd to 58th rows.

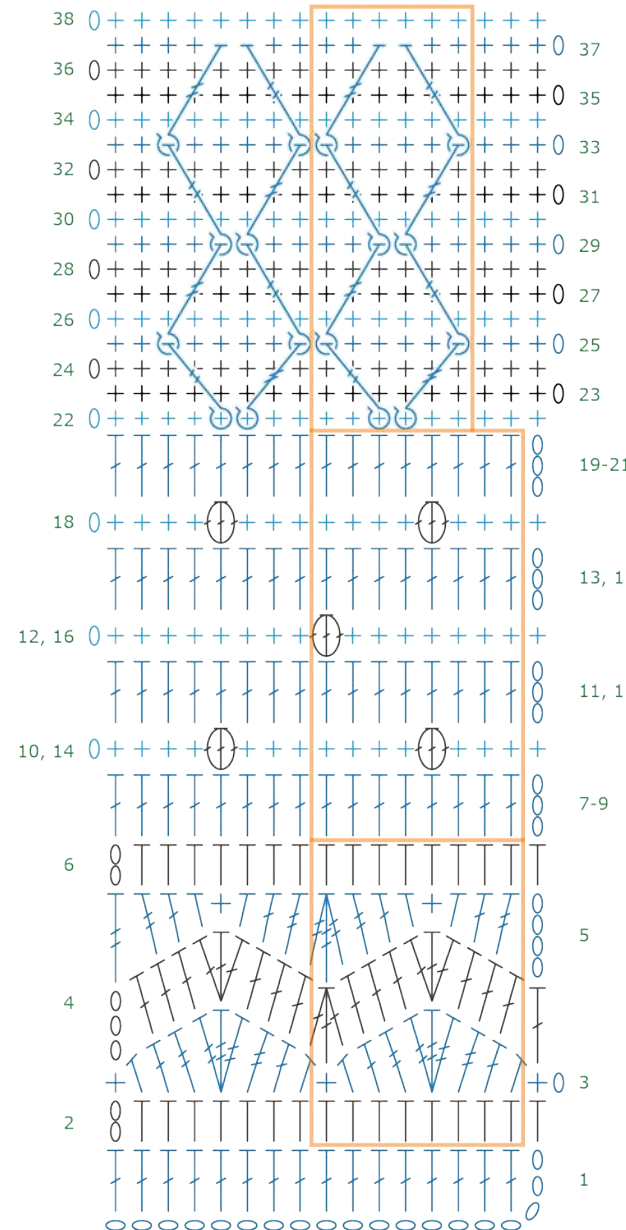
**119th row:** Ch 3. 1 dc in each st to end of row. **Do not** turn. **Do not** fasten off A.

## FINISHING Border

**1st rnd:** With A, working along side edge of afghan, ch 1. Work 135 sc spaced evenly along edge. *Working in unused loops of foundation ch*, 3 sc in first ch. 1 sc in each of the next 111 ch. 3 sc in last ch. Work 135 sc spaced evenly along other side edge. 3 sc in first dc of final row. 1 sc in each of the next 111 dc. 3 sc in last dc. Join with sl st in first sc.



**2nd to 4th rnds:** Ch 1. 1 sc in each sc around, having 3 sc in corners around. Join with sl st in first sc. Fasten off A at end of last rnd. Weave in all loose ends.



Symbol Key:

|   |        |  |         |
|---|--------|--|---------|
| ○ | Ch     |  | Dc3tog  |
| + | Sc     |  | Tr3tog  |
| ┘ | Hdc    |  | Fptr    |
| ┘ | Dc     |  | Cl      |
| ┘ | Tr     |  | Color A |
|   | Repeat |  | Color B |