



**MORNING GLORY AFGHAN
WR1708**



Designed by Glenda Winkleman

Afghan measures 46" x 68"

RED HEART® "Super Saver®": 5 skeins 316 Soft White **CA**; 4 skeins 385 Royal **CB**; 1 skein each 381 Light. Blue **CC**, 885 Delft Blue **CD**, 631 Lt. Sage **CE**; 329 Cornmeal **CF**.

Afghan crochet hook: 6.50 mm [US K-10 ½] or size needed to obtain gauge.

Crochet hook: 6.00 mm [US J-10] Yarn Needle.

GAUGE: In afghan st: 15 sts and 14 rows = 4". **CHECK YOUR GAUGE.** Use any size afghan hook to obtain the gauge.

PANEL (Make 3): With afghan crochet hook and **CA**, chain 43.

Row 1: Insert hook into 2nd ch from hook, yo, draw yarn through st, * insert hook in next chain, yo, draw yarn through st *, repeat from * to * across (43 loops on hook),

Second Half of Row: Yo, draw yarn through 1 loop on hook, ** yo, draw yarn through 2 loops on hook **, repeat from ** to ** across - 1 loop remains on hook and counts as first loop of next row.

Rows 2-207: First loop on hook counts as first st, * insert hook into next vertical st, yo, draw yarn through st *, repeat from * to * across (43 loops on hook.)

Second Half of Row: Yo, draw yarn through 1 loop on hook, ** yo, draw yarn through 2 loops on hook **, repeat from ** to ** across - 1 loop remains on hook and counts as first loop of next row.

Row 208: Slip st in each vertical st across. Fasten off.

EMBROIDERY

With right side of panel facing, follow chart to cross-stitch design onto panels.

PANEL BORDER

With right side of Panel facing, using crochet hook, join **CC** in first row-end st down length.

Round 1: Working down length, chain 1, sc in first row-end st, ** tr in next corresponding horizontal st 4 rows below pulling tr up to current level of work, * sc in each of next 3 row-end sts, tr in next corresponding horizontal st 4 sts below pulling tr up to current level of work *, repeat from * to * down length to within last st across, sc in last row-end st, ch 2, sc in each st across to next corner, chain 2 **, sc in first row-end st down length, rep from ** to ** around, join with slip st to beg sc. Fasten off.

Round 2: Join **CD** in beginning sc, chain-1, sc in beg sc, * sc in next tr, tr in next corresponding horizontal st 3 sts below pulling tr up to current level of work, sc in next sc, tr in next corresponding horizontal st 3 sts below pulling tr up to current level of work *, ** repeat from * to * across to within 2 sts from corner, sc in next tr, sc in next sc, (sc, ch 2, sc) in corner ch-2 space, sc in each sc across to next corner, (sc, ch 2, sc) in corner ch-2 space **, sc in next sc, repeat from ** to ** around, join with slip st to top of beg sc. Fasten off.

Round 3: Join **CB** in beg sc, ch 1, sc in beginning sc, sc in each of next 2 sts, * tr in next corresponding horizontal st 3 sts below pulling tr up to current level of work, sc in each of next 3 sts *, ** repeat from * to * across to within 1 sc from corner, sc in next sc, (sc, ch 2, sc) in corner ch-2 space, sc in each sc across to next corner, (sc, ch 2, sc) in corner ch-2 space **, sc in each of next 4 sts, repeat from ** to ** around to within last sc, sc in last sc, join with slip st to beg sc. Fasten off.

PANEL SIDE BORDER

With right side of Panel facing, working down length, join **CD** in corner ch-2 space.

Row 1: Ch 1, sc in corner ch-2 space, * sc in each of next 3 sts, fptr in next corresponding **CC** tr st 3 rows below pulling tr up to current level of work *, repeat from * to * across to within 3 sts from corner, sc in each of next 3 sts, sc in corner ch-2 space. Fasten off.

Row 2: Return to beginning of Row 1, join **CB** in beg sc, chain 1, sc in beg sc, sc in each of next 4 sts, * fptr in next corresponding **CD** tr 3 rows below pulling tr up to current level of work, sc in next st *, repeat from * to * across to within last 4 sc, sc in each of last 4 sc, turn.

Rows 3 and 4: Ch 1, sc in each st across, turn.

End of Row 4, fasten off.

Repeat Rows 1-4 to opposite side of Panel.

Repeat Side Border to each remaining panel.

PANEL ASSEMBLY

With right sides of 2 panels aligned, slip st panels together on wrong side using back loops, matching sts from corner to corner down length. Repeat for each panel.

AFGHAN BORDER

With right side of afghan facing, using crochet hook, join **CB** in top right-hand corner st.

Round 1: Chain 1, sc in each of first 4 sts, * skip next st, sc in each of next 4 sts *, *** repeat from * to * across to within 3 sts from corner, skip next st, sc in each of next 2 sts, chain 2, working down length, sc in each of next 10 sts, ** skip next st, sc in each of next 10 sts **, repeat from ** to ** across to within 5 sts from corner, skip next st, sc in each of next 4 sts, chain 2 ***, sc in each of next 4 sts, rep from *** to *** around, join with slip st to beginning sc.

Round 2: Chain 1, sc in each sc around, work 3 sc in each corner chain-2 space, join with slip st to beginning sc.

Round 3: Chain 3 (first dc), dc in next sc, (chain 3, slip st) to top of last dc made, * dc in each of next 2 sc, (chain 3, slip st) in top of last dc made *, repeat from * to * around to within last st, dc in last st.

Fasten off.

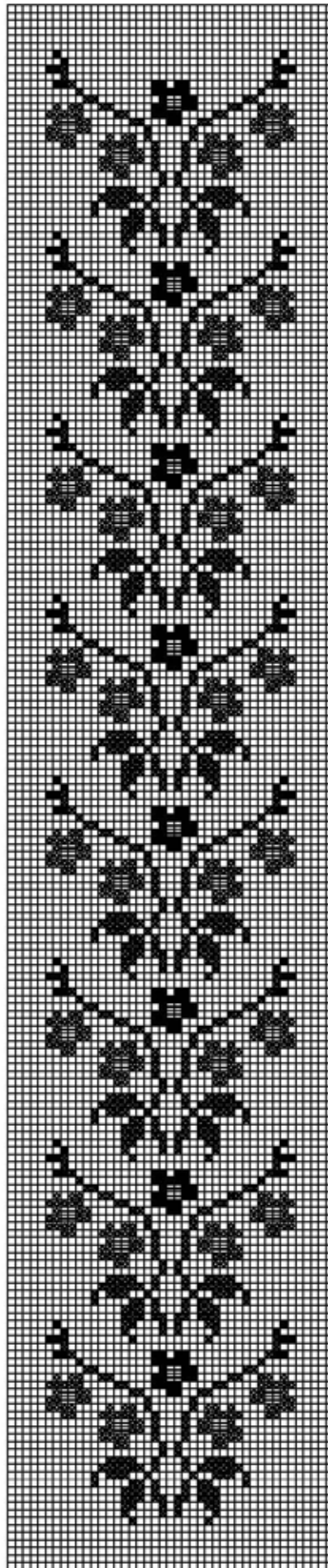
ABBREVIATIONS **CA** = Color A; **CB** = Color B; **CC** = Color C; **CD** = Color D; **CE** = Color E; **CF** = Color F; **ch** = chain; **dc** = double crochet; **fptr** = front post treble; **mm** = millimeters; **sc** = single crochet; **sp(s)** = space(s); **st(s)** = stitch(es); **tr** = treble crochet; **yo** = yarn over hook; [] = work directions in brackets the number of times specified; * **or** ** = repeat whatever follows the * or ** as indicated.

(4 medium) RED HEART® “Super Saver®”, Art. E300, 100% Acrylic 7oz (198g)/ 364yd (333m) solids; 5 oz (141g) / 278 yd (223m) multi

©2006 COATS & CLARK, Inc.
PO Box 12229, Greenville, SC, 29612-0229

Find more free patterns at
www.coatsandclark.com

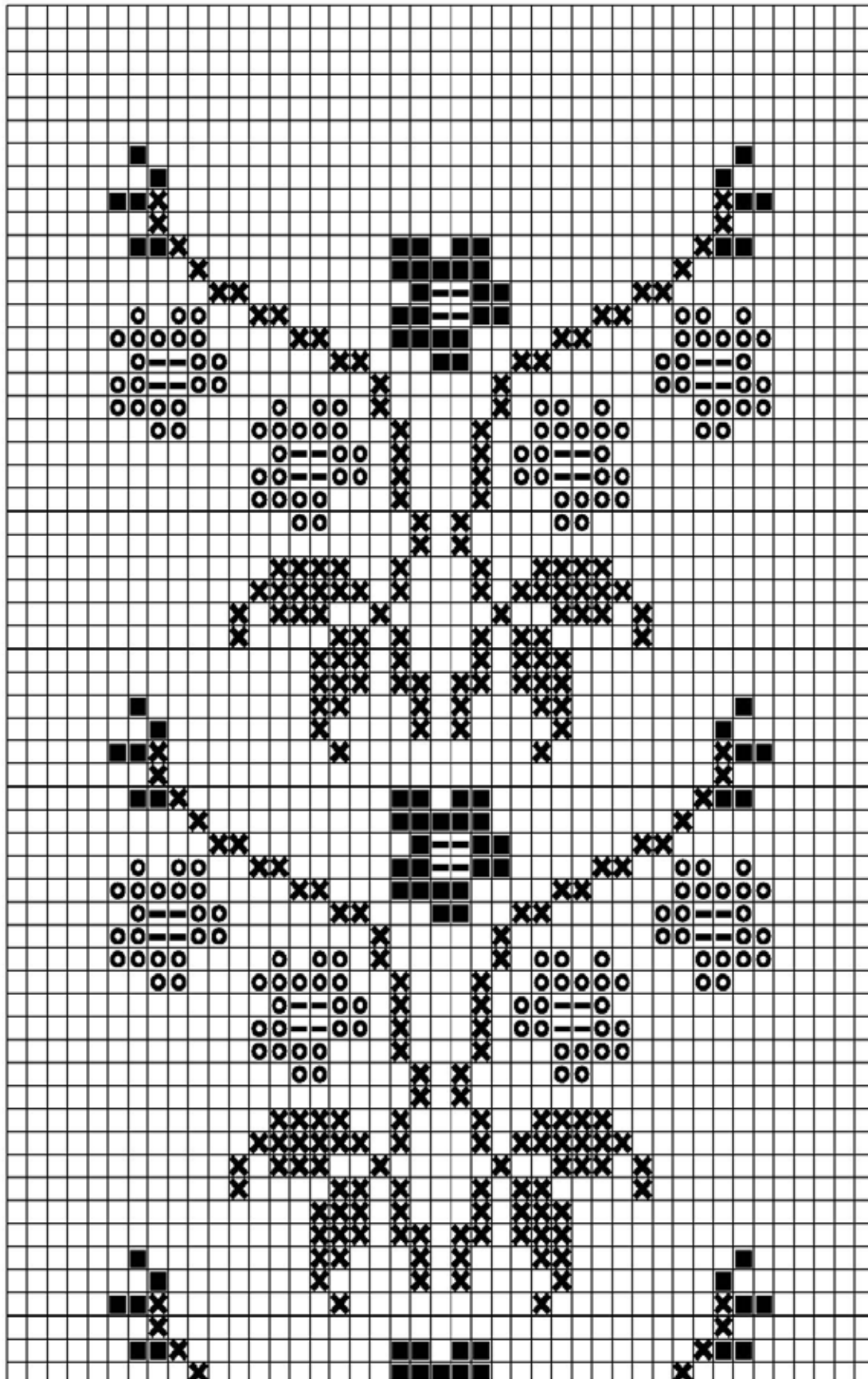
MORNING GLORY AFGHAN



- - Royal
- - Delft Blue
- - - - - Cornmeal
- * - Lt. Sage

43 w. x 207 l.

MORNING GLORY AFGHAN



- = Royal
- = Delft Blue
- = Cornmeal
- x = Lt. Sage

43 w. x 207 l.