



Tiles Granny Afghan

Designed by Darla J. Fanton.

Afghan measures 52½" x 64½".

RED HEART® "Super Saver®": 2 Skeins 931 Seagrass **A**, 1 skein 320 Cornmeal **B**, 2 skeins 505 Aruba Sea **C**, 3 skeins 631 Light Sage **D**.

Crochet Hook: 6mm [US J-10].
Yarn needle.

GAUGE: Rnds 1-2 = 3" square; each block = 7" square.
CHECK YOUR GAUGE. Use any size hook to obtain the gauge.

To Change Color in Dc: Work last dc until 2 loops remain on hook, with new color, yarn over and draw through last 2 loops.

BLOCK (Make 63): With **A**, ch 5; join with a slip st in first ch to form a ring.

Rnd 1: Ch 3, 2 dc in ring, [ch 2, 3 dc in ring] 3 times; hdc in top of ch-3 to join and form last ch-2 space.

Rnd 2: Ch 3, (2 dc, ch 2, 3 dc) all over hdc, [ch 1; (3 dc, ch 2, 3 dc) all in next ch-2 space – **corner** made] 3 times, ch 1; join with a slip st in top of ch-3. Fasten off **A**.

From this point forward block is worked in rows.

Row 1: With right side facing join **B** in 2nd ch of any ch-2; ch 3, 2 dc in same place, ch 1, 3 dc in next ch-1 space, ch 1, corner in next ch-2 space, ch 1, 3 dc in next ch-1 space, ch 1, 3 dc in first ch of next ch-2; turn and leave remaining sts unworked.

Row 2: Ch 3, [ch 1, 3 dc in next ch-1 space] twice, ch 1, corner in next ch-2 space, [ch 1, 3 dc in next ch-1 space] twice, ch 1, dc in top of ch-3 changing to **C**; turn. Fasten off **B**.

Row 3: Ch 3, 2 dc in first ch-1 space, [ch 1, 3 dc in next ch-1 space] twice, ch 1, corner in next ch-2 space, [ch 1, 3 dc in next ch-1 space] twice, ch 1, 2 dc in next ch-1 space, dc in top of ch-3; turn.

Row 4: Ch 3, [ch 1, 3 dc in next ch-1 space] 3 times, ch 1, corner in next ch-2 space, [ch 1, 3 dc in next ch-1 space] 3 times, ch 1, dc in top of ch-3 changing to **D**; turn. Fasten off **C**.

Row 5: Ch 3, 2 dc in first ch-1 space, [ch 1, 3 dc in next ch-1 space] 3 times, ch 1, corner in next ch-2 space, [ch 1, 3 dc in next ch-1 space] 3 times, ch 1, 2 dc in next ch-1 space, dc in top of ch-3; turn.

Row 6: Ch 3, [ch 1, 3 dc in next ch-1 space] 4 times, ch 1, corner in next ch-2 space, [ch 1, 3 dc in next ch-1 space] 4 times, ch 1, dc in top of ch-3. Fasten off.

FINISHING: Following diagram, sew blocks together.

EDGING-NOTE: For Rnd 1, "space" refers to ch-3 OR solitary dc at end of a row OR remaining half of ch-2 corner space OR ch-1 space between 3-dc groups on edges of blocks.

Rnd 1: With right side facing join **A** at upper right corner; ch 3, (2 dc, ch 2, 3 dc) all in same place, *** [ch 1, 3 dc in next space] 4 times, * ch 1, [2 dc in next space] twice, [ch 1, 3 dc in next space] 4 times **; repeat from * to ** 6 more times for top edge; ch 1, corner in next ch-2 space, [ch 1, 3 dc in next space] 4 times; repeat from * to ** 8 times for first long side †, corner in next ch-2 space; repeat from *** for bottom edge and 2nd side, end at †; join.



TILES GRANNY AFGHAN | CROCHET

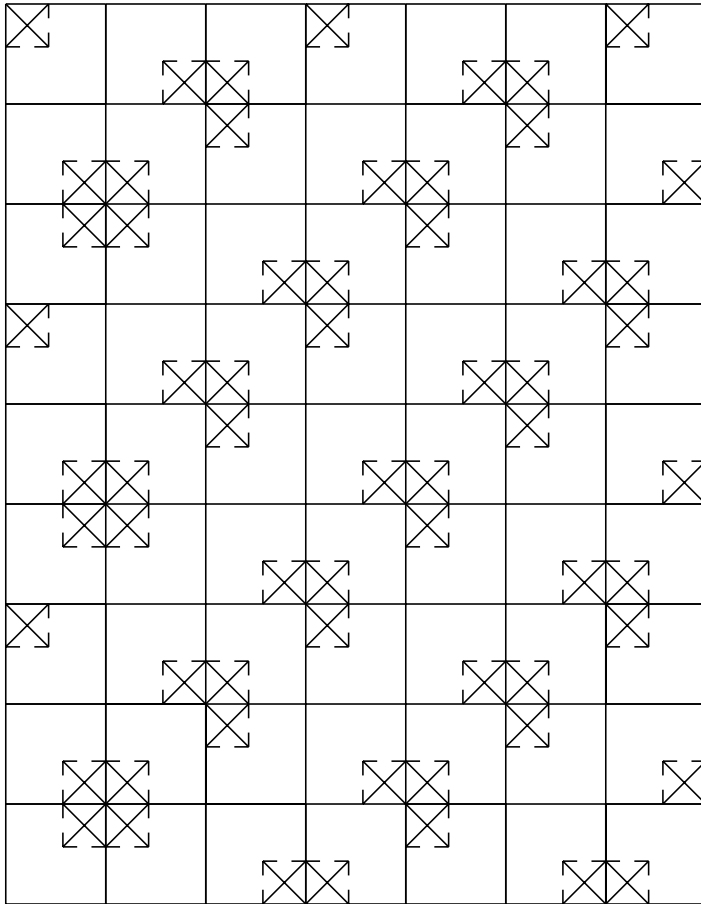
Rnd 2: Slip st in next 2 dc, slip st in ch-2 space, ch 3, (2 dc, ch 2, 3 dc) all in same space, * ch 1, 3 dc in next ch-1 space; repeat from * to corner; (3 dc, ch 2, 3 dc) all in ch-2 corner space; repeat from * around; join. Fasten off.


Rnd 3: With right side facing, join **C** in back loop of any st; ch 1, working in back loops sc in each dc and ch around; join. Fasten off.



RED HEART® “Super Saver®”,
Art. E300 available in solid color – 7oz (198g), 364yd (333m) or multi or fleck color – 5oz (141g), 244yd (223m) skeins.

ABBREVIATIONS: **A, B, C, D** = color A, B, C, D; **ch** = chain; **dc** = double crochet; **hdc** = half double crochet; **mm** = millimeters; **rnd** = round; **sc** = single crochet; * or ** = repeat whatever follows the * or ** as indicated; [] = work directions in brackets the number of times specified.



 = Rnds 1-2 of block