



Rosebud Throw

Designed by Glenda Winkleman.

Throw measures 44½" x 59½".

RED HEART® "Super Saver®": 9 skeins 316 Soft White; 1 skein each 633 Dark Sage, 661 Frosty Green, 374 Country Rose, 372, Rose Pink, 724 Baby Pink.

Afghan Crochet Hook: 6mm [US J-10].

Crochet Hook: 6mm [US J-10].

Yarn needle

GAUGES: 8 sts = 2"; 7 rows = 2" in afghan stitch on Panel B; 11 sts = 3"; 8 rows = 3" in pattern on Panel A.
CHECK YOUR GAUGE. Use any size hook to obtain the gauges.

Bobble Stitch

Insert hook in next vertical st, yo, pull yarn through st, keeping loop on hook, [yo, insert hook in same vertical st just worked, yo, pull yarn through st] 3 times, keeping all loops on hook, yo, pull yarn through all 7 loops on hook = 1 bobble st made.

PANEL A (Make 4)

With afghan crochet hook and Soft White, ch 11.

Row 1: Leaving all loops on hook, draw up a loop in 2nd ch from hook and in each ch across – 11 loops; yo and draw through 1 loop, ** yo and draw through 2 loops; repeat from ** across – 1 loop.

Row 2: Leaving all loops on hook, * insert hook under vertical bar and draw up a loop; repeat from * across – 11 loops; yo and draw through 1 loop, ** yo and draw through 2 loops; repeat from ** across – 1 loop.

Rows 3-147: Work in afghan st and bobbles following Stitch Guide for Panel A.

Row 148: Ch 1, skip first vertical bar, slip st in each vertical bar and bobble st across. Fasten off.

Panel A Border

With crochet hook, join Soft White in upper right corner.

Rnd 1: Ch 3, ** dc in each st across to next corner, ch 2, dc in next row end, * 2 dc in next row end, [dc in next row end] 4 times; repeat from * to last row end; 2 dc in last row end, ch 2; repeat from **; join with a slip st to top of ch-3 – 178 sts across each long edge between corner spaces.

Rnd 2: Ch 1, sc in same st as joining, * ch 1, skip next dc, sc in next dc; repeat from * to last dc before corner; ch 1, skip next dc, (sc, ch 2, 2 sc) all in corner ch-2 space, sc in next dc; repeat from * to next corner; (sc, ch 2, sc) all in corner ch-2 space **; sc in next dc; repeat from * around, end at **; join to first sc – 181 sts across each long edge between corner spaces. Fasten off.



PANEL B (Make 3)

With afghan crochet hook and Soft White, ch 25.

Row 1: Repeat Row 1 of Panel A.

Rows 2-180: Repeat Row 2 of Panel A.

Row 181: Ch 1, slip first vertical bar, slip st in each vertical bar across. Fasten off.

Panel B Border

With crochet hook, join Soft White in upper right corner.

Rnd 1: Ch 3, * dc in each st across to next corner, ch 2, dc in each row end down length to next corner, ch 2; repeat from * around; join to top of ch-3 – 181 sts across each long edge between corner spaces. Fasten off.

EMBROIDERY

Follow chart to cross stitch design onto each Panel B.

ASSEMBLY

With right sides facing and tops of 2 Panels aligned, with Soft White, slip st Panels together working in back loop of sts across long side, matching sts from corner to corner. Alternate Panel A and Panel B.

THROW BORDER

With right side facing and crochet hook, join Soft White in upper right hand corner sc.

Rnd 1: Ch 1, sc in each sc, dc and each ch-1 space around and work 3 sc in each corner ch-2 space; join to first sc.

Rnd 2: Ch 3, dc in next sc, (ch 3, slip st) in top of dc just made, * dc in next 2 sc, (ch 3, slip st) in top of last dc made; repeat from * to last sc; dc in last sc; join. Fasten off. Weave in ends.

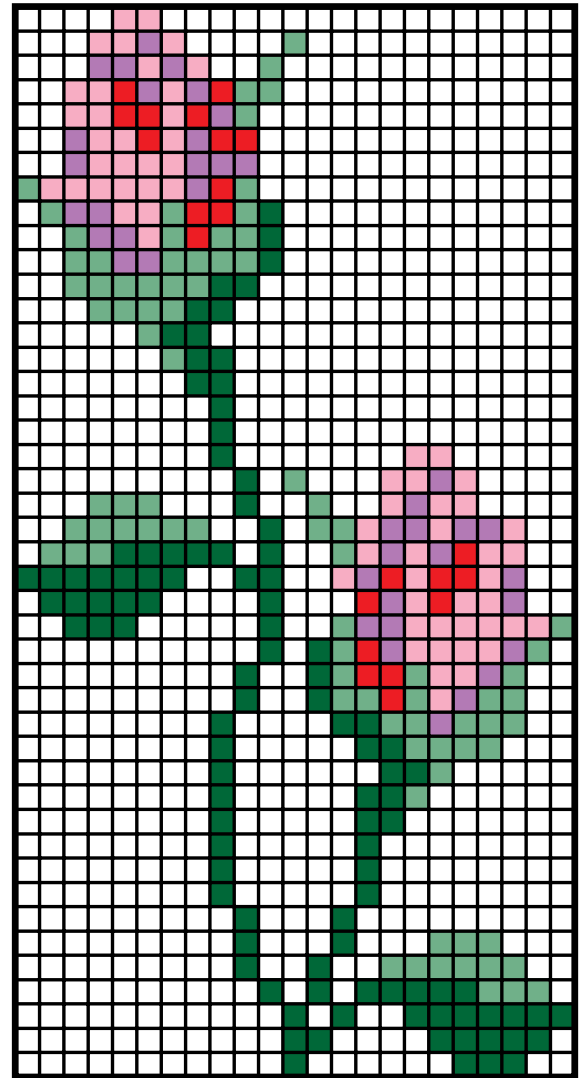


CHART KEY

-  = 316 Soft White background
-  = 633 Dark Sage cross st
-  = 661 Frosty Green cross st
-  = 374 Country Rose cross st
-  = 372 Rose Pink cross st
-  = 374 Baby Pink cross st



RED HEART® “Super Saver®”

Art. E300 available in Solid 7 oz (198 g), 364 yd (333 m); Multi, Fleck and Print 5 oz (141 g), 244 yd (223 m) skeins.

ABBREVIATIONS: **ch** = chain; **dc** = double crochet; **mm** = millimeters; **rnd** = round; **sc** = single crochet; **st(s)** = stitch(es); **yo** = yarn over; * or ** = repeat whatever follows the * or ** as indicated; [] = work directions in brackets the number of times specified.



ROSEBUD THROW | CROCHET

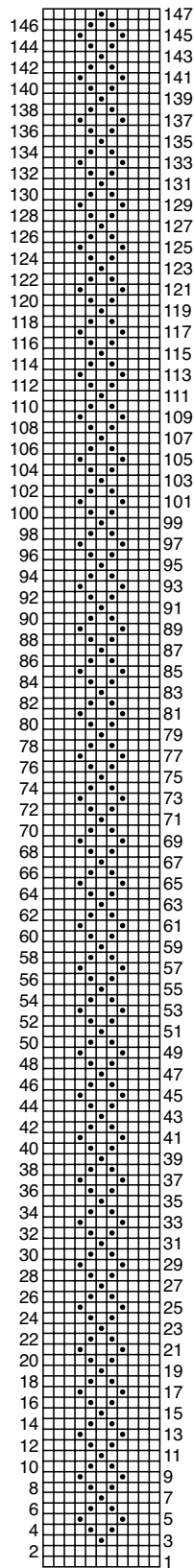


CHART
PANEL A

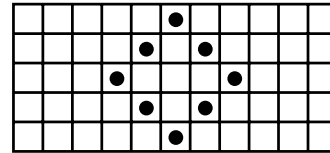




CHART KEY

-  = Basic afghan stitch
-  = Bobble stitch