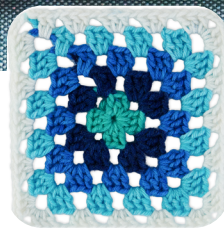


Yarnspirations™



**MAKE THIS**

**CROCHET GRANNY  
COUCH COZY**



Frigid

 CROCHET | SKILL LEVEL: **EASY**  




# MAKE THIS

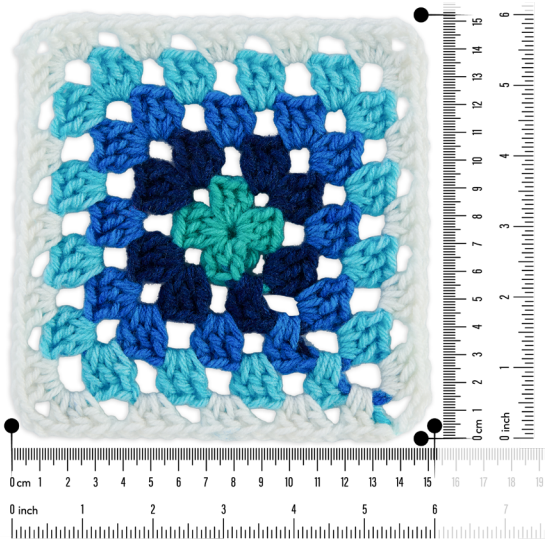
## WHAT YOU'LL NEED



SHOP KIT

## GAUGE

Motif = Approx 6" [15 cm] square.



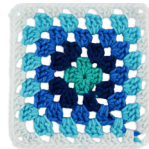
## YARN

- Red Heart® All in One™ Granny Square™ (8.8 oz/250 g; 417 yds/381 m)

## COLORS

Quantity

- Frigid (2004)



1 ball (4 Granny Squares) or 200 yds/183 m

**Note:** 1 ball will make 2 Arm Cozies.

## TOOLS

- Size U.S. I/9 (5.5 mm) Susan Bates® Silvalume® crochet hook **or size needed to obtain gauge.**
- Susan Bates® yarn needle.
- Tape measure.



## MAKE THIS

### ABBREVIATIONS

<b>Approx</b> = Approximately	<b>Rnd(s)</b> = Round(s)
<b>Beg</b> = Begin(ning)	<b>RS</b> = Right side
<b>Ch</b> = Chain(s)	<b>Sl st</b> = Slip stitch
<b>Cont</b> = Continue(ity)	<b>Sp(s)</b> = Space(s)
<b>Dc</b> = Double crochet	<b>St(s)</b> = Stitch(es)
<b>Rem</b> = Remaining	<b>Tog</b> = Together
<b>Rep</b> = Repeat	<b>WS</b> = Wrong side

## INSTRUCTIONS

### USING THIS GUIDE

Click on the underlined words throughout the pattern to access our library of helpful tools.

### NOTES

- Motifs begin with Color 1 (shortest color rep) from center of pull-skein, leaving a 4" [10 cm] tail to **weave in**.
- Each color aligns with 1 round (rnd) in the Motif with 5 colors in total. If too much color is left at end of rnd, pull back some stitches (sts) and slightly loosen gauge to re-work sts and finish at color change. If too little color is left, pull back some sts and slightly tighten gauge to re-work sts and finish at color change.
- When Motif is complete, cut yarn where Color 5 (longest color rep) ends, leaving a tail for weaving in. Begin next Motif with Color 1 and repeat 5 rnds for each Motif.
- **How-to Stitch a Red Heart All-in-One Granny Square.**

## MEASUREMENTS

To fit square couch arm – Approx 6" [15 cm] wide by 10" [25.5 cm] long.





# MAKE THIS

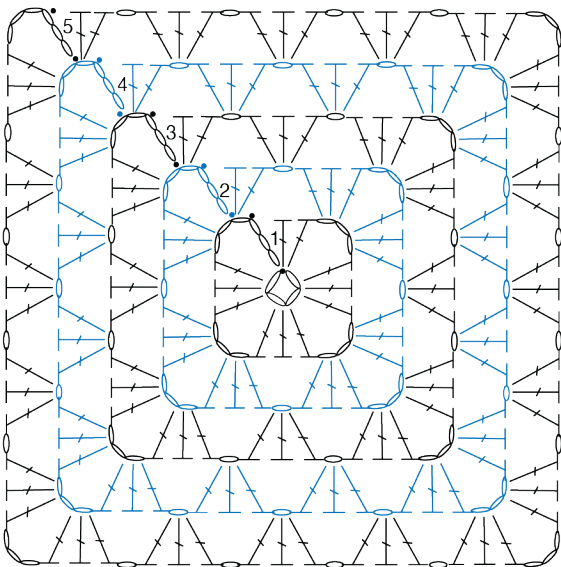
## INSTRUCTIONS

### ABBREVIATIONS

<b>Approx</b> = Approximately	<b>Rnd(s)</b> = Round(s)
<b>Beg</b> = Begin(ning)	<b>RS</b> = Right side
<b>Ch</b> = Chain(s)	<b>Sl st</b> = Slip stitch
<b>Cont</b> = Continue(ity)	<b>Sp(s)</b> = Space(s)
<b>Dc</b> = Double crochet	<b>St(s)</b> = Stitch(es)
<b>Rem</b> = Remaining	<b>Tog</b> = Together
<b>Rep</b> = Repeat	<b>WS</b> = Wrong side

### Notes:

- Ch 3 at beg of rnd counts as **double crochet** (dc).
- Ch 6 at beg of rnds counts as dc and ch-3 sp.
- Join all rnds with **slip stitch** (sl st) to 3rd ch of ch-6 unless otherwise indicated.



### STITCH KEY

- = chain (ch)
- = slip stitch (sl st)
- ┆ = double crochet (dc)

### How-to Stitch a Red Heart All-in-One Granny Square.

### MOTIF

Make 4.

With Color 1, ch 4.

Join with sl st to first ch to form ring.

**1st rnd:** (RS). Ch 6. (3 dc. Ch 3) 3 times in ring. 2 dc in ring. Join.

**2nd rnd:** Sl st in ch-3 sp. Ch 6. 3 dc in same ch-3 sp. \*Ch 1. (3 dc. Ch 3. 3 dc) in next ch-3 sp. Rep from \* twice more. Ch 1. 2 dc in first ch-3 sp. Join.

**3rd rnd:** Sl st in ch-3 sp. Ch 6. 3 dc in same ch-3 sp. \*Ch 1. 3 dc in next ch-1 sp. Ch 1. (3 dc. Ch 3. 3 dc) in next ch-3 sp. Rep from \* twice more. Ch 1. 3 dc in last ch-1 sp. Ch 1. 2 dc in first ch-3 sp. Join.

**4th and 5th rnds:** Sl st in ch-3 sp. Ch 6. 3 dc in same ch-3 sp. \*(Ch 1. 3 dc) in each ch-1 sp to next ch-3 sp. Ch 1.\*\* (3 dc. Ch 3. 3 dc) in next ch-3 sp. Rep from \* twice more, then from \* to \*\* once. 2 dc in first ch-3 sp. Join.

**Fasten off.**



# MAKE THIS

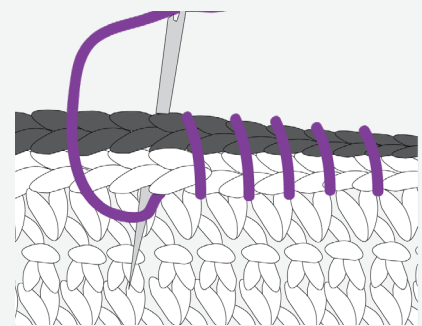
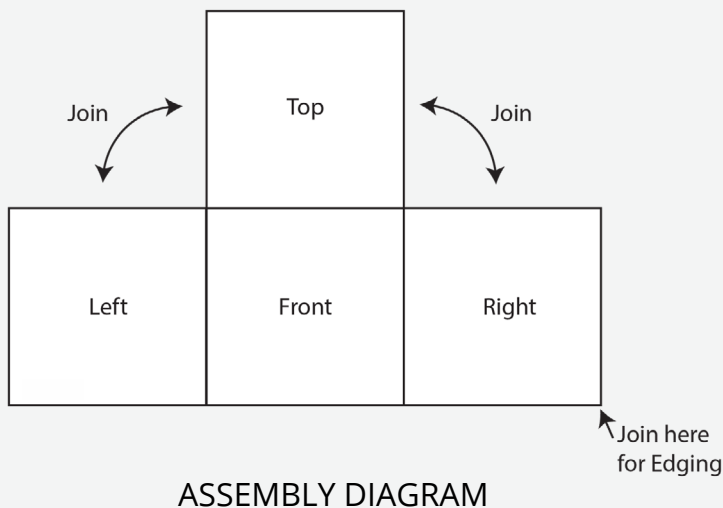
## INSTRUCTIONS

### ABBREVIATIONS

<b>Approx</b> = Approximately	<b>Rnd(s)</b> = Round(s)
<b>Beg</b> = Begin(ning)	<b>RS</b> = Right side
<b>Ch</b> = Chain(s)	<b>Sl st</b> = Slip stitch
<b>Cont</b> = Continue(ity)	<b>Sp(s)</b> = Space(s)
<b>Dc</b> = Double crochet	<b>St(s)</b> = Stitch(es)
<b>Rem</b> = Remaining	<b>Tog</b> = Together
<b>Rep</b> = Repeat	<b>WS</b> = Wrong side

### Granny Corner:

With yarn needle, join Motifs tog as shown in assembly diagram using whip stitch. Granny Corner made.



WHIPSTITCH

### Edging

**Note:** To work Edging and Extension, use yarn as 'self-stripping' yarn, allowing colors to change as they appear.

**1st rnd:** (RS). Join yarn with sl st to ch-3 sp at bottom right of Granny Corner. Ch 6. 3 dc in same sp as sl st. Ch 1. \*(3 dc in next ch-1 sp. Ch 1) to next ch-3 sp.\*\* (3 dc. Ch 1) in each of next 2 ch-3 sps. Rep from \* once more, then from \* to \*\* once.\*\*\* (3 dc. Ch 3. 3 dc) all in next ch-3 sp. Ch 1. Rep from \* to \*\*\* once. 2 dc in first ch-3 sp. Join.

**2nd rnd:** Sl st into ch-3 sp. Ch 6. 3 dc in same sp as sl st. Ch 1. \*(3 dc in next ch-1 sp. ch 1) to next ch-3 sp.\*\* (3 dc. Ch 3. 3 dc) all in next ch-3 sp. Ch 1. Rep from \* to \*\* once more. 2 dc in first ch-3 sp. Join with sl st into next ch-3 sp.



# MAKE THIS

## INSTRUCTIONS

### ABBREVIATIONS

<b>Approx</b> = Approximately	<b>Rnd(s)</b> = Round(s)
<b>Beg</b> = Begin(ning)	<b>RS</b> = Right side
<b>Ch</b> = Chain(s)	<b>Sl st</b> = Slip stitch
<b>Cont</b> = Continue(ity)	<b>Sp(s)</b> = Space(s)
<b>Dc</b> = Double crochet	<b>St(s)</b> = Stitch(es)
<b>Rem</b> = Remaining	<b>Tog</b> = Together
<b>Rep</b> = Repeat	<b>WS</b> = Wrong side

Cont working in rows as follows for Extension:

**1st row:** (RS). Ch 4 (counts as dc and ch-1). (3 dc in next ch-1 sp. Ch 1) to next ch-3 sp. 1 dc in next ch-3 sp. **Turn.** Leave rem sts unworked.

**2nd row:** (WS). Ch 3. 2 dc in first ch-1 sp. Ch 1. (3 dc in next ch-1 sp. Ch 1) to last ch-1 sp. 2 dc in last ch-1 sp. 1 dc in last dc. **Turn.**

**3rd row:** Ch 4 (counts as dc and ch-1). (3 dc in next ch-1 sp. Ch 1) to last ch-1 sp. 3 dc in last ch-1 sp. Ch 1. 1 dc in last dc. **Turn.**

Rep last 2 rows 4 times more. Fasten off.

*We love seeing your makes! Share your photos using #YARNspo and tag us @yarnspirations on Instagram or find us on Facebook.*