



CROCHET | SKILL LEVEL: **INTERMEDIATE**

ABBREVIATIONS

Approx = Approximately

Ch = Chain(s)

Pat = Pattern

Rem = Remaining

Rep = Repeat

RS = Right side

Sc = Single crochet

Sl st = Slip stitch

Sp(s) = Space(s)

St(s) = Stitch(es)

Tog = Together

WS = Wrong side

SIZES

To fit chest measurement

12 mos **18"** [45.53 cm]

24 mos **19"** [48.5 cm]

4 yrs **23"** [58.5 cm]

6 yrs **25"** [63.5 cm]

Finished chest measurement

12 mos **22¼"** [56.5 cm]

24 mos **24"** [61 cm]

4 yrs **26¼"** [66.5 cm]

6 yrs **28"** [71 cm]

GAUGE

14 sts and 14½ rows = 4" [10 cm]
in pat

INSTRUCTIONS

The instructions are written for smallest size. If changes are necessary for larger sizes the instructions will be written thus (). When only one number is given, it applies to all sizes. For ease in working, circle all numbers pertaining to your size.

MATERIALS

Red Heart® Chic Sheep by Marly Bird™ (3.5 oz/100 g; 186 yds/170 m)

Sizes	12 mos	24 mos	4 yrs	6 yrs	
Velvet (5633)	3	4	5	6	balls

Sizes U.S. I/9 (5.5 mm) crochet hook **or size needed to obtain gauge.**
Separating zipper 18" [45 cm] long.

NOTE: Jacket is worked in sc with ch-2 sps. Cables are added when piece is finished by working sl st crochet embroidery through fabric, using the ch-1 sps and diagram as a guide.

BODY

Ch 79 (85-93-99).

1st row: (RS). 1 sc in 2nd ch from hook. 1 sc in each of next 0 (0-2-2) ch. (Ch 2. Skip next 2 ch. 1 sc in each of next 2 ch) 4 times. 1 sc in each of next 7 (10-12-15) ch. (Ch 2. Skip next 2 ch. 1 sc in each of next 2 ch) 8 times. 1 sc in each of next 7 (10-12-15) ch. (Ch 2. Skip next 2 ch. 1 sc in each of next 2 ch) 3 times. Ch 2. Skip next 2 ch. 1 sc in each of last 1 (1-3-3) ch. Turn. 78 (84-92-98) sts.

2nd row: Ch 1. *1 sc in each sc to next ch-2 sp. Ch 2. Skip next ch-2 sp. Rep from * across. 1 sc in each sc to end of row. Turn.

3rd row: As 2nd row.

4th row: Ch 1. *1 sc in each sc to next ch-2 sp. Ch 2. Skip next ch-2 sp. 1 sc in each of next 2 sc. 1 sc in next ch-2 sp. Ch 4. Skip next 2 sc. 1 sc in next ch-2 sp. 1 sc in each of next 2 sc. Ch 2. Skip next ch-2 sp. Rep from * across. 1 sc in each sc to end of row. Turn.

5th row: Ch 1. *1 sc in each sc to next ch-2 sp. Ch 2. Skip next ch-2 sp. 1 sc in each of next 3 sc. (1 sc. Ch 2. 1 sc) in next ch-4 sp. 1 sc in each of next 3 sc. Ch 2. Skip next ch-2 sp. Rep from * across. 1 sc in each sc to end of row. Turn.

6th row: Ch 1. *1 sc in each sc to next ch-2 sp. Ch 2. Skip next ch-2 sp. 1 sc in each of next 3 sc. Ch 4. Skip next (sc, ch 2, sc). 1 sc in each of next 3 sc. Ch 2. Skip next ch-2 sp. Rep from * across. 1 sc in each sc to end of row. Turn.

7th row: Ch 1. *1 sc in each sc to next ch-2 sp. Ch 2. Skip next ch-2 sp. 1 sc in each of next 2 sc. Ch 2. 2 sc in next ch-4 sp. Ch 2. Skip next sc. 1 sc in each of next 2 sc. Ch 2. Skip next ch-2 sp. Rep from * across. 1 sc in each sc to end of row. Turn.

8th to 11th rows: As 2nd row.

Rep 4th to 11th rows 1 (1-2-3) more times, then 4th and 5th rows once.

Divide for fronts and back:

Right Front: 1st row: (RS). Ch 1. 1 sc in each sc to next ch-2 sp. Ch 2. Skip next ch-2 sp. 1 sc in each of next 3 sc. Ch 4. Skip next (sc, ch 2, sc). 1 sc in each of next 3 sc. Ch 2. Skip next ch-2 sp. 1 sc in each of next 1 (1-2-2) sc. Turn. Leave remaining sts unworked. 16 (16-19-19) sts.

2nd row: Ch 1. 1 sc in each sc to next ch-2 sp. Ch 2. Skip next ch-2 sp. 1 sc in each of next 2 sc. Ch 2. 2 sc in next ch-4 sp. Ch 2. Skip next sc. 1 sc in each of next 2 sc. Ch 2. Skip next ch-2 sp. 1 sc in each sc to end of row. Turn.

3rd row: Ch 1. *1 sc in each sc to next ch-2 sp. Ch 2. Skip next ch-2 sp. Rep from * across. 1 sc in each sc to end of row. Turn.

4th to 6th rows: As 3rd row.

7th row: Ch 1. 1 sc in each sc to next ch-2 sp. Ch 2. Skip next ch-2 sp. 1 sc in each of next 2 sc. 1 sc in next ch-2 sp. Ch 4. Skip next 2 sc. 1 sc in next ch-2 sp. 1 sc in next 2 sc. Ch 2. Skip next ch-2 sp. 1 sc in each sc to end of row. Turn.

8th row: Ch 1. 1 sc in each sc to next ch-2 sp. Ch 2. Skip next ch-2 sp. 1 sc in each of next 3 sc. (1 sc. Ch 2. 1 sc) in next ch-4 sp. 1 sc in each of next 3 sc. Ch 2. Skip next ch-2 sp. 1 sc in each sc to end of row. Turn.

9th row: Ch 1. 1 sc in each sc to next ch-2 sp. Ch 2. Skip next ch-2 sp. 1 sc in each of next 3 sc. Ch 4. Skip next (1 sc, ch 2, 1 sc). 1 sc in each of next 3 sc. Ch 2. Skip next ch-2 sp. 1 sc in each sc to end of row. Turn.

Rep 2nd to 3rd (3rd-6th-6th) rows once more.

Shape neck:

Sizes 12 mos and 24 mos only:

1st row: (RS). Ch 1. 1 sc in first sc. (Ch 2. Skip next ch-2 sp. 1 sc in each next 2 sc) twice. Ch 1. 1 sc in next ch-2 sp. Turn. Leave rem sts unworked. 11 sts.

2nd row: Ch 1. Skip first sc. 1 sc in next ch-1 sp. (1 sc in each of next 2 sc. Ch 2. Skip next ch-2 sp) twice. 1 sc in last sc. Turn. 10 sts.

3rd row: Ch 1. 1 sc in first sc. (Ch 2. Skip next ch-2 sp. 1 sc in each of next 2 sc) twice. Turn. 9 sts.

4th row: Ch 1. Skip first sc. 1 sc in next sc. Ch 1. 1 sc in next ch-2 sp. 1 sc in each of next 2 sc. Ch 2. Skip next ch-2 sp. 1 sc in last sc. Turn. 8 sts.

5th row: Ch 1. 1 sc in first sc. Ch 2. Skip next ch-2 sp. 1 sc in each of next 3 sc. 1 sc in next ch-1 sp. 1 sc in last sc. Turn.

6th row: Ch 1. 1 sc in each of next 5 sc. Ch 2. Skip next ch-2 sp. 1 sc in last sc. Turn.

7th row: Ch 1. 1 sc in first sc. Ch 2. Skip next ch-2 sp. 1 sc in each sc to end of row. Fasten off.

Sizes 4 yrs and 6 yrs only: 1st row: (WS). Sl st in each of next 6 sts. 1 sc in next sc. 1 sc in next ch-2 sp. Ch 4. Skip each of next 2 sc. 1 sc in next ch-2 sp. 1 sc in each of next 2 sc. Ch 2. Skip next ch-2 sp. 1 sc in each of last 2 sc. Turn. 13 sts.

2nd row: Ch 1. 1 sc in each of next 2 sc. Ch 2. Skip next ch-2 sp. 1 sc in each of next 3 sc. (1 sc. Ch 2. 1 sc) in next ch-4 sp. 1 sc in next sc. Turn. 12 sts.

3rd row: Ch 1. Skip first sc. 1 sc in next sc. Ch 3. Skip next sc. 1 sc in each of next 3 sc. Ch 2. Skip next ch-2 sp. 1 sc in each of last 2 sc. Turn. 11 sts.

4th row: Ch 1. 1 sc in each of next 2 sc. Ch 2. Skip next ch-2 sp. 1 sc in each of next 2 sc. Ch 2. 2 sc in next ch-3 sp. Turn. 10 sts.

5th to 7th rows: Ch 1. (1 sc in each of next 2 sc. Ch 2. Skip next ch-2 sp) twice. 1 sc in each of last 2 sc. Fasten off.

All sizes: BACK: 1st row: (WS). Skip next 6 (9-7-10) sc. Join yarn with sl st to next sc. *1 sc in each sc to next ch-2 sp. Ch 2. Skip next ch-2 sp. 1 sc in each of next 3 sc. Ch 4. Skip next (sc, ch 2, sc). 1 sc in each of next 3 sc. Ch 2. Skip next ch-2 sp. Rep from * once more. 1 sc in each of next 1 (1-4-4) sc. Turn. Leave rem sts unworked. 32 (32-38-38) sts.

2nd row: Ch 1. *1 sc in each sc to next ch-2 sp. Ch 2. Skip next ch-2 sp. 1 sc in each of next 2 sc. Ch 2. 2 sc in next ch-4 sp. Ch 2. Skip next sc. 1 sc in each of next 2 sc. Ch 2. Skip next ch-2 sp. Rep from * across. 1 sc in each sc to end of row. Turn.

3rd row: Ch 1. *1 sc in each sc to next ch-2 sp. Ch 2. Skip next ch-2 sp. Rep from * across. 1 sc in each sc to end of row. Turn.

4th to 6th rows: As 3rd row.

7th row: Ch 1. *1 sc in each sc to next ch-2 sp. Ch 2. Skip next ch-2 sp. 1 sc in each of next 2 sc. 1 sc in next ch-2 sp. Ch 4. Skip next 2 sc. 1 sc in next ch-2 sp. 1 sc in each of next 2 sc. Ch 2. Skip next ch-2 sp. Rep from * across. 1 sc in each sc to end of row. Turn.

8th row: Ch 1. *1 sc in each sc to next ch-2 sp. Ch 2. Skip next ch-2 sp. 1 sc in each of next 3 sc. (1 sc. Ch 2. 1 sc) in next ch-4 sp. 1 sc in each of next 3 sc. Ch 2. Skip next ch-2 sp. Rep from * across. 1 sc in each sc to end of row. Turn.

9th row: Ch 1. *1 sc in each sc to next ch-2 sp. Ch 2. Skip next ch-2 sp. 1 sc in each of next 3 sc. Ch 4. Skip next (sc, ch 2, sc). 1 sc in each of next 3 sc. Ch 2. Skip next ch-2 sp. Rep from * across. 1 sc in each sc to end of row. Turn. Rep 2nd to 7th (7th-9th-9th) rows once more.

Back neck shaping:

Sizes 12 mos and 24 mos only:

1st row: (RS). Ch 1. 1 sc in first sc. Ch 2. Skip next ch-2 sp. 1 sc in each of next 5 sts. Turn. Leave rem sts unworked. 8 sts.

2nd and 3rd rows: Ch 1. 1 sc in each sc to next ch-2 sp. Ch 2. Skip next ch-2 sp. 1 sc in each sc to end of row. Turn. Fasten off at end of last row.

With RS facing, skip next 16 sts. Join yarn with sl st to next st.

1st row: (RS). Ch 1. 1 sc in next st. 1 sc in each of next 3 sts. Ch 2. Skip next ch-2 sp. 1 sc in last sc. Turn. 8 sts.

2nd and 3rd rows: Ch 1. 1 sc in each sc to next ch-2 sp. Ch 2. Skip next ch-2 sp. 1 sc in each sc to end of row. Turn. Fasten off at end of last row.

Sizes 4 yrs and 6 yrs only: 1st row: (WS). Ch 1. 1 sc in each of next 4 sts. Ch 2. Skip next ch-2 sp. 1 sc in each of next 2 sc. Ch 1. 1 sc in next st. Turn. 10 sts.

2nd row: Ch 1. 1 sc in first sc. Ch 1. Skip next ch-1 sp. 1 sc in each of next 2 sc. Ch 2. Skip next ch-2 sp. 1 sc in each of next 4 sc. Turn.

3rd row: Ch 1. 1 sc in each of next 4 sc. Ch 2. Skip next ch-2 sp. 1 sc in each of next 2 sc. Ch 1. 1 sc in last sc. Fasten off.

With WS facing, skip next 18 sts. Join yarn with sl st to next st.

1st row: Ch 1. 1 sc in each of next 2 sc. Ch 2. Skip next ch-2 sp. 1 sc in each of next 4 sc. Turn. 10 sts.

2nd row: Ch 1. 1 sc in each of next 4 sc. Ch 2. Skip next ch-2 sp. 1 sc in each of next 2 sc. Ch 1. 1 sc in last sc. Turn.

3rd row: Ch 1. 1 sc in first sc. Ch 1. 1 sc in each of next 2 sc. Ch 2. Skip next ch-2 sp. 1 sc in each of last 4 sc. Fasten off.

All sizes: Left Front: 1st row: (WS). Skip next 6 (9-7-10) sc. Join yarn with sl st to next sc. Ch 1. 1 sc in each sc to next ch-2 sp. Ch 2. Skip next ch-2 sp. 1 sc in each of next 3 sc. Ch 4. Skip next (sc, ch 2, sc). 1 sc in each of next 3 sc. Ch 2. Skip next ch-2 sp. 1 sc in each sc to end of row. Turn 16 (16-19-19) sts.

Rep 2nd to 11th (11th-14th-14th) rows of Front Panel.

Neck shaping: Sizes 12 mos and 24 mos only:

1st row: (RS). Sl st in each of next 5 sts. Ch 1. 1 sc in next ch-2 sp. Ch 1. (1 sc in each of next 2 sc. Ch 2. Skip next ch-2 sp) twice. 1 sc in last sc. Turn. 11 sts.

2nd row: Ch 1. 1 sc in first sc. (Ch 2. Skip next ch-2 sp. 1 sc in each of next 2 sc) twice. 1 sc in ch-1 sp. Turn. 10 sts.

3rd row: Ch 1. Skip first sc. (1 sc in each of next 2 sc. Ch 2. Skip next ch-2 sp) twice. 1 sc in last sc. Turn. 9 sts.

4th row: Ch 1. 1 sc in first sc. Ch 2. Skip next ch-2 sp. 1 sc in each of next 2 sc. 1 1 sc in next ch-2 sp. Ch 1. 1 sc in next sc. Turn. 8 sts.

5th row: Ch 1. 1 sc in each of next 5 sts. Ch 2. 1 sc in last sc. Turn.

6th row: Ch 1. 1 sc in first sc. Ch 2. 1 sc in each of last 5 sc. Turn.

7th row: Ch 1. 1 sc in each of next 5 sc. Ch 2. 1 sc in last sc. Fasten off.

Sizes 4 yrs and 6 yrs only: 1st row: (WS). Ch 1. 1 sc in each of first 2 sc. Ch 2. 1 sc in next 2 sc. 1 sc in next ch-2 sp. Ch 4. Skip next 2 sc. 1 sc in next ch-2 sp. 1 sc in next sc. Turn. 13 sts.

2nd row: Ch 1. Skip first sc. 1 sc in next sc. (1 sc. Ch 2. 1 sc) in next ch-4 sp. 1 sc in each of next 3 sc. Ch 2. 1 sc in last 2 sc. Turn. 12 sts.

3rd row: Ch 1. 1 sc in each of first 2 sc. Ch 2. 1 sc in each of next 3 sc. Ch 3. Skip next sc. 1 sc in next sc. Turn. 11 sts.

4th row: Ch 1. Skip first sc. 2 sc in ch-3 sp. Ch 2. Skip next sc. 1 sc in each of next 2 sc. Ch 2. 1 sc in each of last 2 sc. Turn. 10 sts.

5th to 7th rows: Ch 1. (1 sc in each of next 2 sc. Ch 2) twice. 1 sc in each of last 2 sc. Fasten off at end of last row.

SLEEVES

Ch 23 (27-29-33).

1st row: (RS). 1 sc in 2nd ch from hook. 1 sc in each of next 3 (5-6-8) ch. (Ch 2. Skip next 2 ch. 1 sc in each of next 2 ch) 4 times. 1 sc in each ch to end of row. Turn. 22 (26-28-32) sts.

2nd row: Ch 1. *1 sc in each sc to next ch-2 sp. Ch 2. Skip next ch-2 sp. Rep from * across. 1 sc in each sc to end of row. Turn.

3rd row: As 2nd row.

4th row: Ch 1. 1 sc in each sc to next ch-2 sp. Ch 2. Skip next ch-2 sp. 1 sc in each of next 2 sc. 1 sc in next ch-2 sp. Ch 4. Skip next 2 sc. 1 sc in next ch-2 sp. 1 sc in each of next 2 sc. Ch 2. Skip next ch-2 sp. 1 sc in each sc to end of row. Turn.

5th row: Ch 1. 1 sc in each sc to next ch-2 sp. Ch 2. Skip next ch-2 sp. 1 sc in each of next 3 sc. (1 sc. Ch 2. 1 sc) in next ch-4 sp. 1 sc in each of next 3 sc. Ch 2. Skip next ch-2 sp. 1 sc in each sc to end of row. Turn.

6th row: Ch 1. 1 sc in each sc to next ch-2 sp. Ch 2. Skip next ch-2 sp. 1 sc in each of next 3 sc. Ch 4. Skip next (sc, ch 2, sc). 1 sc in each of next 3 sc. Ch 2. Skip next ch-2 sp. 1 sc in each sc to end of row. Turn.

7th row: Ch 1. 2 sc in first sc. 1 sc in each sc to next ch-2 sp. Ch 2. Skip next ch-2 sp. 1 sc in each of next 2 sc. Ch 2. 2 sc in next ch-4 sp. Ch 2. Skip next sc. 1 sc in each of next 2 sc. Ch 2. Skip next ch-2 sp. 1 sc in each sc to last sc. 2 sc in last sc. Turn. **24 (28-30-34)** sts.

8th to 11th rows: As 2nd row. Rep 4th to 11th rows **1 (1-2-2)** time(s) more. **26 (30-34-38)** sts.

Sizes 12 mos and 24 mos only: Rep 4th to 8th rows. **28 (30)** sts.

Sizes 4 yrs and 6 yrs only: 28th row: As 4th row.

29th row: Ch 1. 2 sc in first sc. 1 sc in each sc to next ch-2 sp. Ch 2. Skip next ch-2 sp. 1 sc in each of next 3 sc. (1 sc. Ch 2. 1 sc) in next ch-4 sp. 1 sc in each of next 3 sc. Ch 2. Skip next ch-2 sp. 1 sc in each sc to last sc. 2 sc in last sc. Turn. **(36-40)** sts.

30th row: As 6th row.

Shape Sleeve Cap

Sizes 12 mos and 24 mos only:

1st row: (RS). Sl st in each of first **0 (2)** sc. Ch 1. *1 sc in each sc to next ch-2 sp. Ch 2. Skip next ch-sp. Rep from * across. 1 sc in each sc to last 2 sc. Turn. Leave rem sts unworked. 28 sts.

2nd row: Ch 1. Skip first sc. *1 sc in each sc to next ch-2 sp. Ch 2. Skip next ch-sp. Rep from * across. 1 sc in each sc to last sc. Turn. Leave rem st unworked. 26 sts.

3rd row: Ch 1. *1 sc in each sc to next ch-2 sp. Ch 2. Skip ch-sp. Rep from * across. 1 sc in each sc to end of row. Turn.

4th row: Ch 1. Skip first sc. 1 sc in each sc to next ch-2 sp. Ch 2. Skip next ch-2 sp. 1 sc in each of next 2 sc. 1 sc in next ch-2 sp. Ch 4. Skip next 2 sc. 1 sc in next ch-2 sp. 1 sc in each of next 2 sc. Ch 2. Skip next ch-2 sp. 1 sc in each sc to last sc. Turn. Leave last sc unworked. 24 sts.

5th row: Ch 1. 1 sc in each sc to next ch-2 sp. Ch 2. Skip next ch-2 sp. 1 sc in each of next 3 sc. (1 sc. Ch 2. 1 sc) in next ch-4 sp. 1 sc in each of next 3 sc. Ch 2. Skip next ch-2 sp. 1 sc in each sc to end of row. Turn.

6th row: Ch 1. Skip first sc. 1 sc in each sc to next ch-2 sp. Ch 2. Skip next ch-2 sp. 1 sc in each of next 3 sc. Ch 4. Skip next (sc, ch 2, sc). 1 sc in each of next 3 sc. Ch 2. Skip next ch-2 sp. 1 sc in each sc to last sc. Turn. Leave last sc unworked. 22 sts.

7th row: Ch 1. 1 sc in each sc to ch-2 sp. Ch 2. Skip next ch-2 sp. 1 sc in each of next 2 sc. Ch 2. 2 sc in next ch-4 sp. Ch 2. Skip next sc. 1 sc in each of next 2 sc. Ch 2. Skip next ch-2 sp. 1 sc in each sc to end of row. Turn. Rep 2nd and 3rd rows once, then 2nd to 4th rows once. Fasten off.

Sizes 4 yrs and 6 yrs only: 1st row: (RS). Sl st in each of next **(3-5)** sc. Ch 1. 1 sc in each sc to next ch-2 sp. Ch 2. Skip next ch-2 sp. 1 sc in each of next 3 sc. (1 sc. Ch 2. 1 sc) in next ch-4 sp. 1 sc in each of next 3 sc. Ch 2. Skip next ch-2 sp. 1 sc in each sc to last **(3-5)** sc. Turn. Leave rem sts unworked. 30 sts.

2nd row: Ch 1. Skip first sc. 1 sc in each sc to next ch-2 sp. Ch 2. Skip next ch-2 sp. 1 sc in each of next 3 sc. Ch 4. Skip next (sc, ch 2, sc). 1 sc in each of next 3 sc. Ch 2. Skip next ch-2 sp. 1 sc in each sc to last sc. Turn. Leave last sc unworked. 28 sts.

3rd row: Ch 1. 1 sc in each sc to next ch-2 sp. Ch 2. Skip next ch-2 sp. 1 sc in each of next 2 sc. Ch 2. 2 sc in next ch-4 sp. Ch 2. Skip next sc. 1 sc in each of next 2 sc. Ch 2. Skip next ch-2 sp. 1 sc in each sc to end of row. Turn.

4th row: Ch 1. Skip first sc. *1 sc in each sc to next ch-2 sp. Ch 2. Skip next ch-2 sp. Rep from * across. 1 sc in each sc to last sc. Turn. Leave last sc unworked. 26 sts.

5th row: Ch 1. *1 sc in each sc to next ch-2 sp. Ch 2. Skip next ch-2 sp. Rep from * across. 1 sc in each sc to end of row. Turn.

6th row: As 4th row. 24 sts.

7th row: As 5th row.

8th row: Ch 1. Skip first sc. 1 sc in each sc to next ch-2 sp. Ch 2. Skip next ch-2 sp. 1 sc in each of next 2 sc. 1 sc in next ch-2 sp. Ch 4. Skip next 2 sc. 1 sc in next ch-2 sp. 1 sc in each of next 2 sc. Ch 2. Skip next ch-2 sp. 1 sc in each sc to last sc. **Turn.** Leave last sc unworked. 22 sts.

9th row: Ch 1. 1 sc in each sc to next ch-2 sp. Ch 2. Skip next ch-2 sp. 1 sc in each of next 3 sc. (1 sc. Ch 2. 1 sc) in next ch-4 sp. 1 sc in each of next 3 sc. Ch 2. Skip next ch-2 sp. 1 sc in each sc to end of row. **Turn.**
Rep 2nd to 4th rows once more. Fasten off.

FINISHING

Pin all pieces to measurements. Cover with a damp cloth, leaving cloth to dry.

Slip Stitch Embroidery: Join yarn to body or sleeve at any chain sp. Following Diagram, sl st up body and sleeve following chain sps.

Sew shoulder seams. Sew in sleeves. Sew side and sleeve seams.

Collar: 1st rnd: (RS). Join yarn with sl st to edge of neck. Ch 1. 1 sc evenly around neck edge. **Turn.**

2nd row: Ch 8. 1 sc in 2nd ch from hook and each ch to end of chain. Sl st in each of next 2 sc. **Turn.** 7 sc.

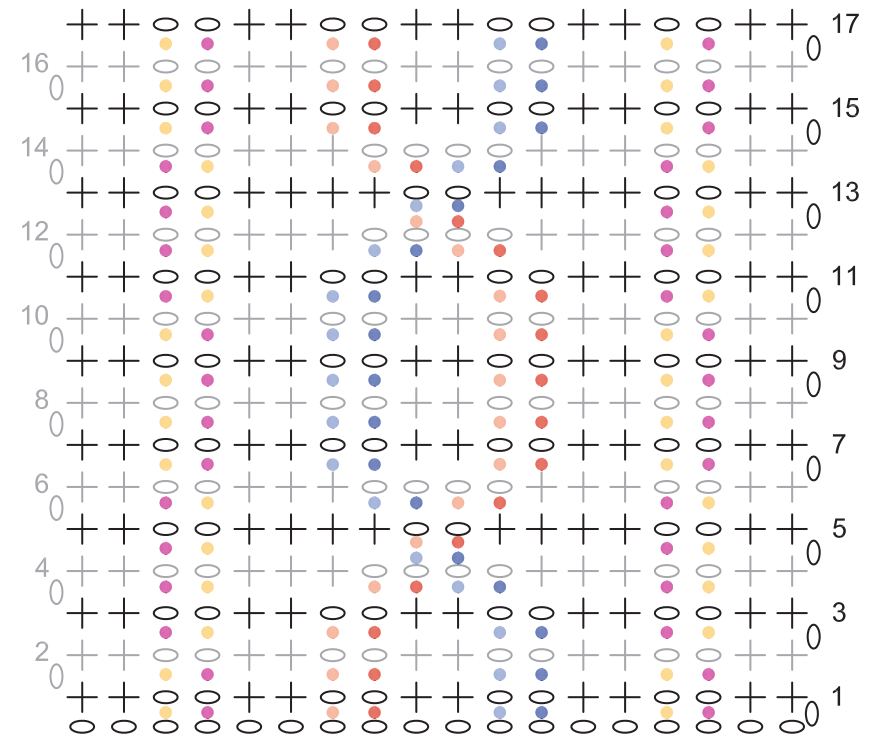
3rd row: Ch 1. *Working in back loops only*, 1 sc in each sc to end of row. **Turn.**

4th row: Ch 1. *Working in back loops only*, 1 sc in each sc to end of row. Sl st in each of next 2 neck edge sc. **Turn.**
Rep 3rd and 4th rows to end of neck edge row. Fasten off.

Bottom Ribbing: Work around bottom edge of sweater as given for Collar.

Cuffs: Work around sleeve cuffs as given for Collar. Sew first and last rows tog.

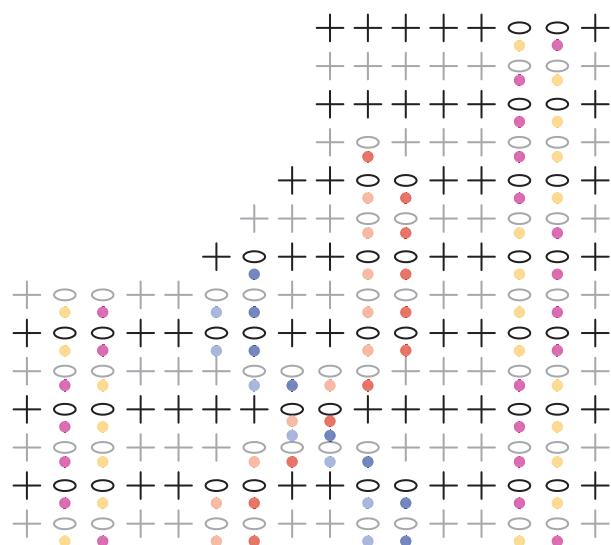
Sew zipper in place



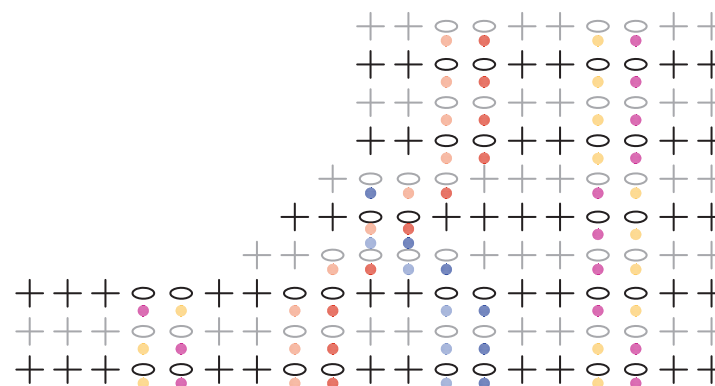
Slip Stitch Cable Stitch Pattern

Symbols Key

- chain
- slip stitch
- + single crochet



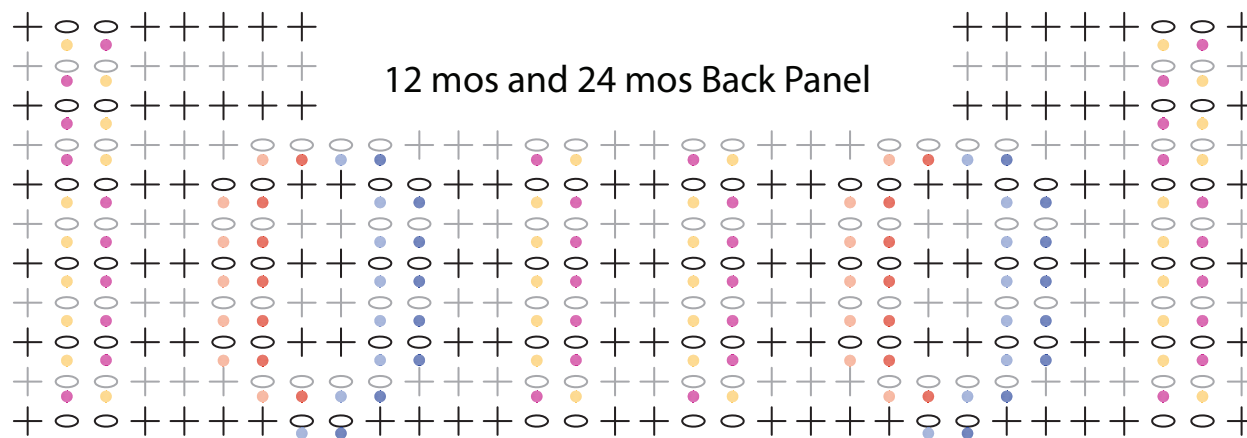
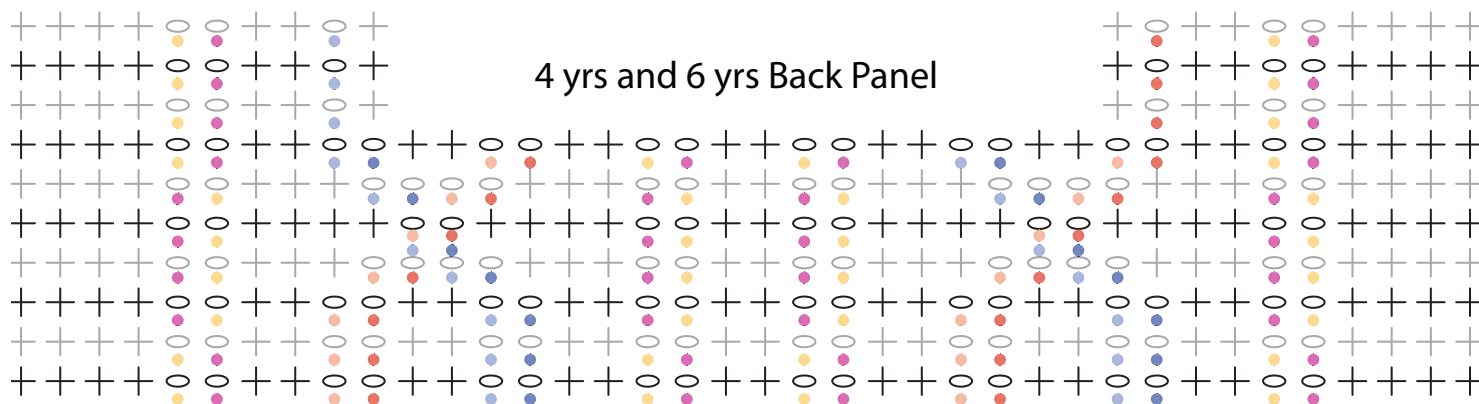
12 mos and 24 mos Front Panel



4 yrs and 6 yrs Front Panel

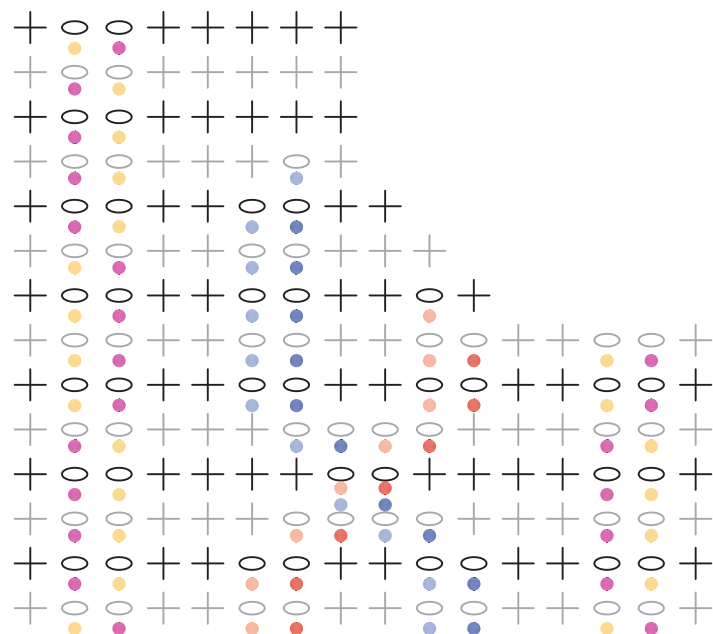
Symbols Key

- O chain
- slip stitch
- + single crochet

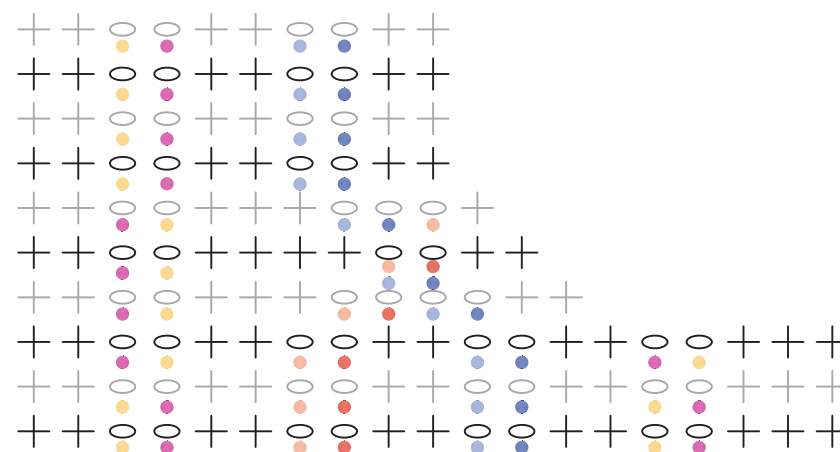


Symbols Key

- O chain
- slip stitch
- + single crochet



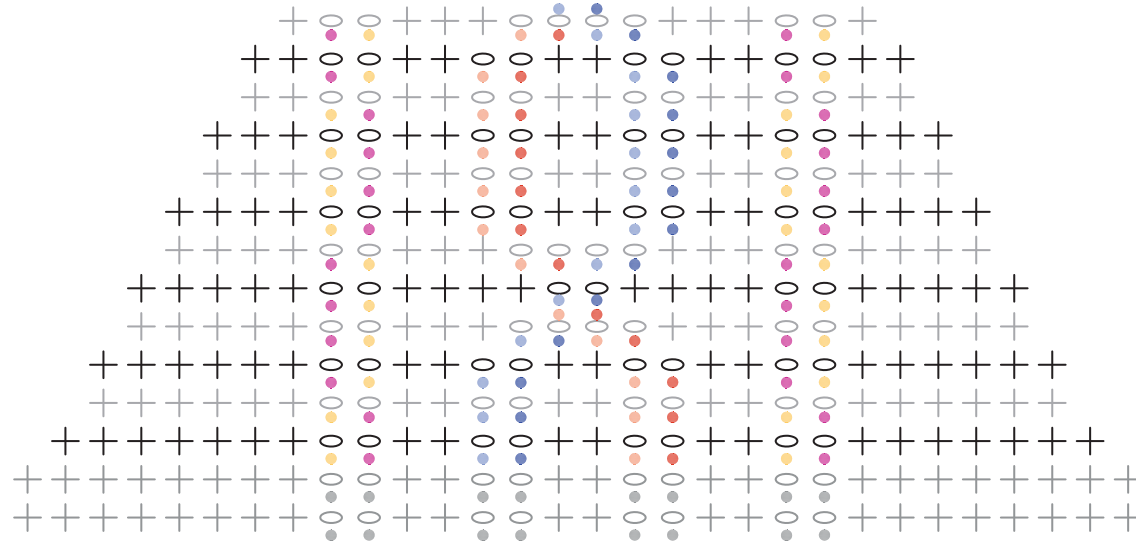
12 mos and 24 mos Opposite Front Panel



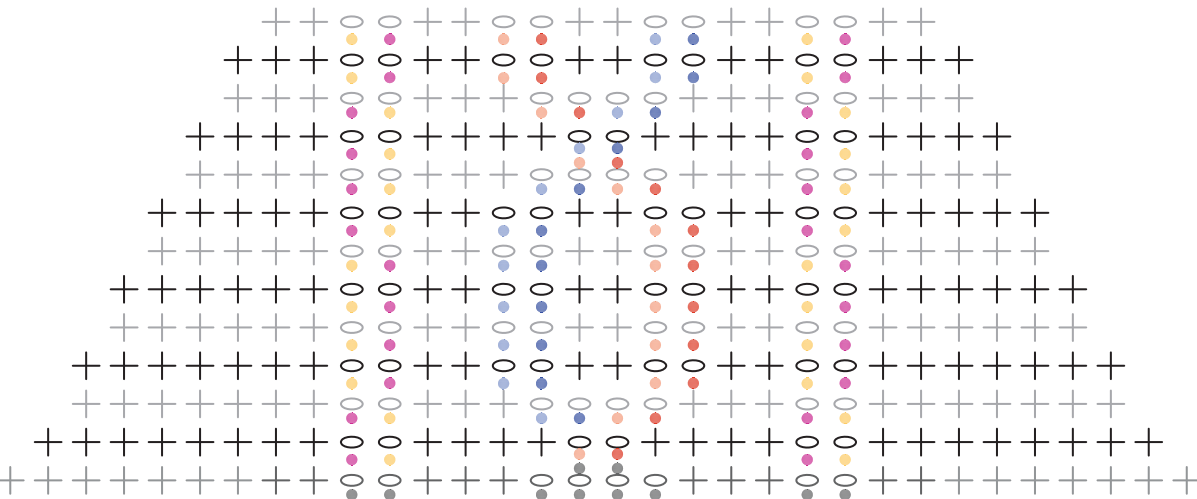
4 yrs and 6 yrs Opposite Front Panel

Symbols Key

- chain
- slip stitch
- + single crochet



12 mos and 24 mos Sleeve Cap Shaping



4 yrs and 6 yrs Sleeve Cap Shaping

Symbols Key

- chain
- slip stitch
- + single crochet

