



MATERIALS

Red Heart® Roll With It Sparkle™ (5.29 oz/150 g; 561 yds/513 m)

Magic (9275)

1 ball

Size U.S. G/6 (4 mm) crochet hook **or size needed to obtain gauge.**

Tapestry needle.



CROCHET | SKILL LEVEL: **EASY**

ABBREVIATIONS

Approx =

Approximately

Beg = Begin(ning)

Ch = Chain(s)

Hdc = Half double
crochet

Dc = Double crochet

Pat = Pattern

Rep = Repeat

Rnd(s) = Round(s)

Sc = Single crochet

Sl st = Slip stitch

Sp(s) = Space(s)

St(s) = Stitch(es)

WS = Wrong side

SIZE

To fit Child 6/10 yrs

GAUGE

14 sc and 18 rows = 4" [10 cm].

INSTRUCTIONS

Ch 46.

See diagram on page 2.

1st row: (WS). 1 sc in 5th ch from hook. Ch 3. Skip next 3 ch. 1 sc in next ch. *Ch 3. Skip next 2 ch. 1 sc in next ch. Ch 3. Skip next 3 ch. 1 sc in next ch. Rep from * to last 2 ch. Ch 1. 1 hdc in last ch. Turn.

2nd row: Ch 1. 1 sc in first hdc. *Ch 1. (1 dc. Ch 1) 4 times in next ch-3 sp. 1 sc in next ch-3 sp. Rep from * to end of row, ending last rep with 1 sc in 3rd ch of beg ch-4. Turn.

3rd row: Ch 4 (counts as dc, ch 1). Skip first ch-1 sp. 1 sc in next ch-1 sp. Ch 3. Skip next ch-1 sp. 1 sc in next ch-1 sp. *Ch 3. Skip next 2 ch-1 sps. 1 sc in next ch-1 sp. Ch 3. Skip next ch-1 sp. 1 sc in next ch-1 sp. Rep from * to last ch-1 sp. Ch 1. 1 dc in last sc. Turn.

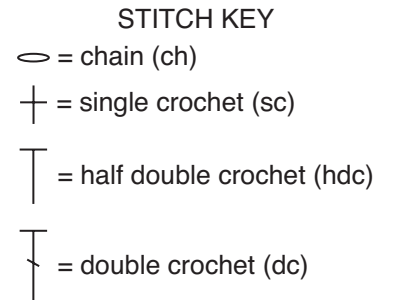
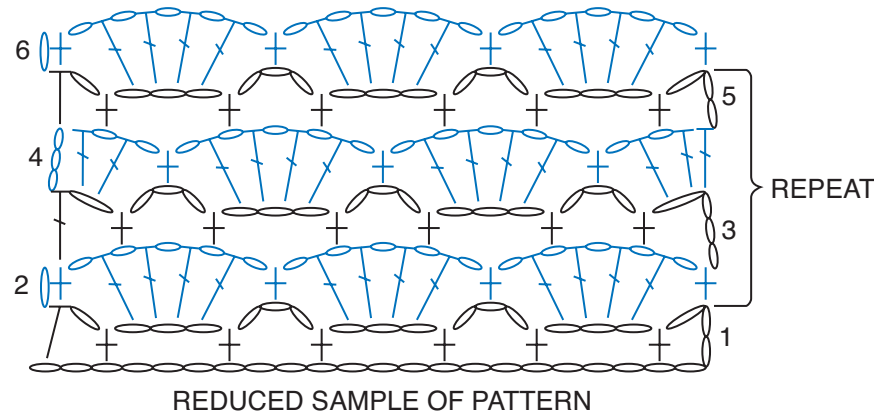
4th row: Ch 3 (counts as dc). (1 dc. Ch 1) twice in first ch-1 sp. 1 sc in next ch-3 sp. *Ch 1. (1 dc. Ch 1) 4 times in next ch-3 sp. 1 sc in next ch-3 sp. Rep from * to last ch-1 sp. (Ch 1. 1 dc) twice in last ch-1 sp. 1 dc in 3rd ch of beg ch-4. Turn.

5th row: Ch 3 (counts as hdc, ch 1). 1 sc in first ch-1 sp. Ch 3. Skip next 2 ch-1 sps. 1 sc in next ch-1 sp. *Ch 3. Skip next ch-1 sp. 1 sc in next ch-1 sp. Ch 3. Skip next 2 ch-1 sps. 1 sc in next ch-1 sp. Rep from * to last 2 dc. Ch 1. 1 hdc in top of beg ch-3. Turn.

Rep 2nd-5th rows for pat until work from beg measures approx 38" [96.5 cm] ending on a 5th row. Fasten off.

Finishing: Fold work in half lengthwise with RS facing out. Sew side seams 12" [30.5 cm] in from each end to form sleeves.

Cuffs: Join yarn with sl st to Cuff at seam. Ch 1. Work 1 rnd sc evenly around Cuff. Join with sl st to first sc. Fasten off.



FRONT

BACK