



# Ripple Waves Baby Blanket

Designed by Mary Jane Protus.

**Blanket measures 36" x 38".**

**RED HEART® "Soft Yarn":** 3 balls each 2541 Sky Blue **A** and 4600 White **B**.

**Crochet Hook:** 6 mm [US J-10]  
Yarn needle.

**GAUGE:** 17 sts = 4" in pattern; 10 rows = 4". **CHECK YOUR GAUGE. Use and size hook to obtain the specified gauge.**

**NOTE:** To Change Color in sc: Insert hook in next st and draw up a loop, drop working color and pick up new color, pull new color through 2 loops on hook.

## SPECIAL ABBREVIATIONS

**shell:** 5 dc in same st or space.

**dc2tog (double crochet 2 together):** [yo, insert hook in next st(sp), yo and pull through 2 loops on hook] twice, yo and pull through all 3 loops on hook (1 st dec).

**dc3tog (double crochet 3 together):** [yo, insert hook in next st(sp), yo and pull through 2 loops on hook] 3 times, yo and pull through all 4 loops on hook (2 sts dec).

## Color Sequence

Work in the following color sequence throughout: \*4 rows **A**, 2 rows **B**, 4 rows **A**, 4 rows **B**, 2 rows **A**, 4 rows **B**: repeat from \* throughout.

## BLANKET

With **A**, ch 163.

**Row 1 (right side):** Starting in 4th ch from hook, work dc2tog in next 2 ch, \*ch 1, skip next ch, [dc in next ch, ch 1, skip next ch] twice, shell in next ch, ch 1, skip next ch, [dc in next ch, ch 1, skip 1 ch] twice\*\*, dc2tog in next 2 ch, skip next ch, dc2tog in next 2 ch; repeat from \* across to last 14 ch; repeat from \* to \*\* once; end with dc3tog worked in last 3 ch; turn—10 shells.

**Row 2:** Ch 1, sc in first st, sc in next ch-1 space, \*[ch 1, skip next dc, sc in next ch-1 space or st] 7 times, ch 1, skip next 2 dc2tog, sc in next ch-1 space; repeat from \* across; end with sc in top of beg ch-3; turn.

**Row 3:** Ch 3, dc2tog worked in next sc and next ch-1 space, \*ch 1, [dc in next ch-1 space, ch 1] twice, shell in next ch-1 space, ch 1, [dc in next ch-1 space, ch 1] twice \*\*, dc2tog worked in next ch-1 space and next sc, skip next ch-1 space, work dc2tog in next sc and next ch-1 space; repeat from \* across 8 times; repeat from \* to \*\* once; end with dc3tog worked in last ch-1 space and last 2 sc; turn.

**Rows 4-89:** Rep rows 2 and 3, working in color sequence as indicated above, ending with row 3 of pattern in color **A**. Do not fasten off. Weave in ends.

## Edging

**Round 1:** With right side facing, working with **A**, ch 1, \*working across side edge of blanket, work sc, ch 1, skip space equal to ch-1\*; repeat from \* to \* across side to bottom corner, work (sc, ch 1, sc) in corner st, working across opposite side of foundation ch, ch 1, \*\*sc in space between next 2 dc, [ch 1, sc in ch-1 space] 3 times, skip next ch where shell is worked, [sc in next ch-1 space, ch 1] 3 times, sc between next 2 dc, ch 1, sc in next ch-1 space; repeat from \*\* across, ch 1, work (sc, ch 1, sc) in corner, repeat from \* to \* across side edge to next corner, work (sc, ch 1, sc) in corner st, \*\*\*[sc in ch-1 space, ch 1] 3 times, sc in next dc, ch 1, skip next dc, sc in next dc, ch 1, skip next dc, sc in next dc, [ch 1, sc in next ch-1 sp] 3 times, ch 1; repeat from \*\*\* across top edge; end with sc in top left-hand corner, ch 1; join with slip st in first sc. Fasten off.











RIPPLE WAVES BABY BLANKET | CROCHET

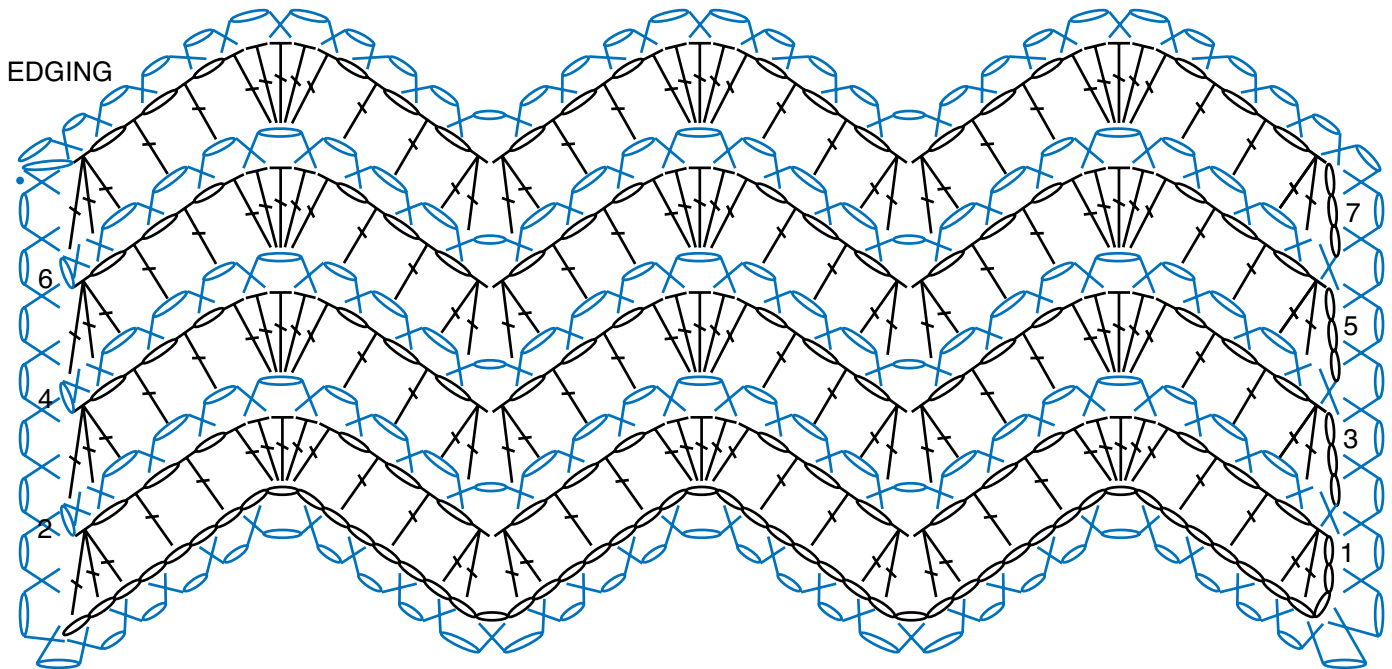


**RED HEART® “Soft Yarn”**, Art. E728  
available in solid color 5 oz (140 g),  
256 yd (234 m) and print 4 oz (113 g),  
204 yd (187 m) balls.

**ABBREVIATIONS:** **A, B** = color A, B; **ch** = chain;  
**dc** = double crochet; **mm** = millimeters; **sc** = single  
crochet; **st(s)** = stitch(es); **[ ]** = work directions in brackets  
the number of times specified; \* or \*\* = repeat whatever  
follows the \* or \*\* as indicated.

STITCH KEY

-  = chain (ch)
-  = slip st (sl st)
-  = single crochet (sc)
-  = half double crochet (hdc)
-  = double crochet (dc)
-  = dc2tog
-  = dc3tog
-  = shell



REDUCED SAMPLE OF PATTERN