



Looking for the original pattern? You can find it [here](#).

MATERIALS

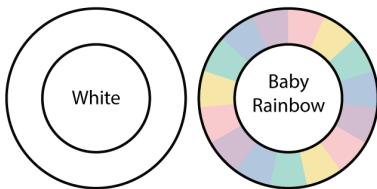
Red Heart® Super Saver® O'Go™ (Solids: 7 oz/198 g; 364 yds/333 m; Prints: 5 oz/141 g; 236 yds/215 m)

Main Color (MC) White (7100)

4 O'Gos

Contrast A Baby Rainbow (7175)

1 O'Go



Size U.S. I/9 (5.5 mm) crochet hook **or size needed to obtain gauge.** Yarn needle.



CROCHET | SKILL LEVEL: **EASY**

ABBREVIATIONS

Approx =

Approximately

Beg = Beginning

Beg Block = Ch 3 (counts as dc). 1 dc in next stitch.

Block = 1 dc in each of next 2 stitches

Ch = Chain(s)

Cont = Continue(ity)

Dc = Double crochet

Mesh = 1 dc in next stitch. Ch 1. Skip next stitch.

Pat = Pattern

Rep = Repeat

RS = Right side

Sc = Single crochet

Sl st = Slip stitch

Sp(s) = Space(s)

St(s) = Stitch(es)

WS = Wrong side

MEASUREMENTS

Approx 41" x 47½" [104 x 121 cm].

GAUGE

12 sc and 15 rows = 4" [10 cm].

INSTRUCTIONS

Notes:

- Ch 3 at beg of rows counts as dc.
- Ch-1 sp counts as st.
- When working into ch-1 sp, work into space not chain.

- After last Block, each row ends with dc in last st (top of turning ch-3). Not shown on Chart.
- To begin working with the O'Go format, carefully cut plastic tie where the ends of the O'Go meet.
- Pull tie to remove.
- Start crocheting!

BLANKET

With MC, ch 149.

1st row: (RS). 1 dc in 4th ch from hook (counts as 2 dc). 1 dc each ch to end of chain. Turn. 147 dc.
1st row of Chart is complete.

Work Chart to end of chart, *reading RS rows from right to left and WS rows from left to right* on WS rows, noting 18-block rep will be worked 4 times, as follows:

2nd row: Ch 3. 1 dc in next dc – Beg Block made. *1 dc in next st. Ch 1. Skip next st – Mesh made. 1 dc in each of next 2 sts – Block made. Rep from * to last st. 1 dc in last st. Turn.

3rd row: Ch 3. 1 dc in each st to end of row. Turn.

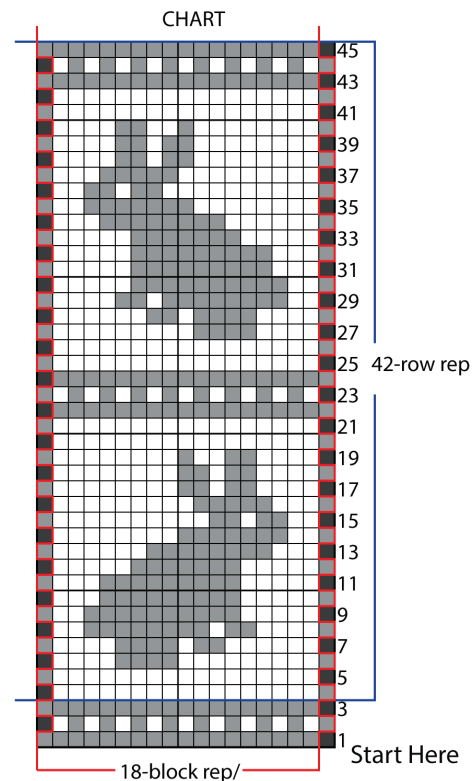
4th row: Beg Block. *(Mesh) 17 times. (Block) once. Rep from * to last st. 1 dc in last st. Turn.

5th row: As 4th row.

6th row: Beg Block. *(Mesh) 4 times. (Block) 4 times. (Mesh) 9 times. (Block) once. Rep from * to last st. 1 dc in last st. Turn.

7th row: Beg Block. *(Mesh) 6 times. (Block) twice. (Mesh) once. (Block) 4 times. (Mesh) 4 times. (Block) once. Rep from * to last st. 1 dc in last st. Turn.
First 7 rows of Chart are complete.

Cont to work Chart to end of chart. Rep 4th to 45th rows of Chart once more.
Fasten off.



Edging: With RS facing, join A with sl st to top right corner of Blanket. Ch 1. 1 sc in same sp as last sl st. *Ch 1. Skip next 2 sts. [(1 dc. Ch 1) twice. 1 dc] all in next st — Shell made. Ch 1. Skip next 2 sts. 1 sc in next st. Rep from * to next corner, working last sc in corner st. **Do not** turn. Ch 1. Working across edge of Blanket, **Ch 1. Skip 1st row. Shell, working into side of st at end of next row. Ch 1. Skip next row.*** 1 sc in side of st in next row. Rep from ** to next corner, working last sc in corner st. Rep from * to *** once more. Join with sl st to first sc. Fasten off.



Stitch Key

- = Beg Block (Ch 3. 1 dc in next st.)
- = Block (1 dc in each of next 2 sts.)
- = Mesh (1 dc in next st. Ch 1. Skip next st.)