



CROCHET | SKILL LEVEL: EASY

ABBREVIATIONS

Approx = Approximately

Beg = Beginning

Ch = Chain(s)

Dc = Double crochet

Pat = Pattern

Rep = Repeat

RS = Right side

Sc = Single crochet

Sp(s) = Space(s)

St(s) = Stitch(es)

SIZES

To fit chest measurement

XS/S 28-34" [71-86.5 cm]

M 36-38" [91.5-96.5 cm]

L 40-42" [101.5-106.5 cm]

XL 44-46" [112-117 cm]

2/3XL 48-54" [122-137 cm]

4/5XL 56-62" [142-157.5 cm]

Finished chest

XS/S 38 ¾" [98.5 cm]

M 43½" [110.5 cm]

L 48" [122 cm]

XL 52½" [133.5 cm]

2/3XL 57¼" [145.5 cm]

4/5XL 62" [157.5 cm]

GAUGES

15 sc and 19 rows = 4" [10 cm].

5 V-sts and 7 rows = 4" [10 cm] in pat.

INSTRUCTIONS

The instructions are written for **XS/S**. If changes are necessary for larger sizes the instructions will be written **XS/S (M-L-XL-2/3XL-4/5XL)**. Numbers for each size are shown in the same color throughout the pattern. When only one number is given in black, it applies to all sizes.

Notes:

- Vest is intended to have 2-10" [5-25.5 cm] ease. Review finished chest measurements before choosing your size.
- Vest is worked in 2 pieces from side to side.
- Foundation ch worked over multiple of 4 ch + 5.
- Ch 3 at beg of row counts as dc.

MATERIALS

Red Heart® Roll With It Mélangé™ (5.29 oz/150 g; 389 yds/356 m)

Sizes	XS/S	M	L	XL	2/3XL	4/5XL	
Theatre (0573)	2	2	2	3	3	3	balls
	600	660	768	848	912	1026	yds
	646	722	840	928	998	1122	m

Size U.S. H/8 (5 mm) Susan Bates® Silvalume® crochet hook **or size needed to obtain gauge.** Susan Bates® stitch markers. Susan Bates® yarn needle.

RIGHT BODY & LEFT BODY (Make 2 pieces alike)
 Ch **205** (**205-213-213-213-221**), leaving a 24" [61 cm] long end for seaming. *See diagram.*

Foundation row: (RS). Working into horizontal 'bump' at back of foundation chain, (1 dc. Ch 2. 1 dc – V-st made) in 6th ch from hook (skipped ch-5 counts as 1 dc and 2 skipped ch). *Skip next 3 ch. V-st in next ch. Rep from * to last 3 ch. Skip next 2 ch. 1 dc in last ch. **50** (**50-52-52-52-54**) V-sts and 2 dc. Turn.

1st row: Ch 3. V-st in each ch-2 sp to end of row. 1 dc in top of turning ch. Turn.

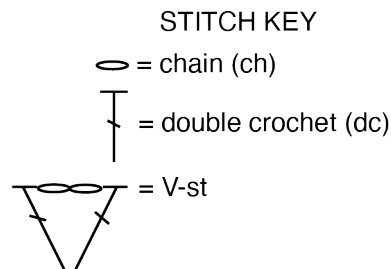
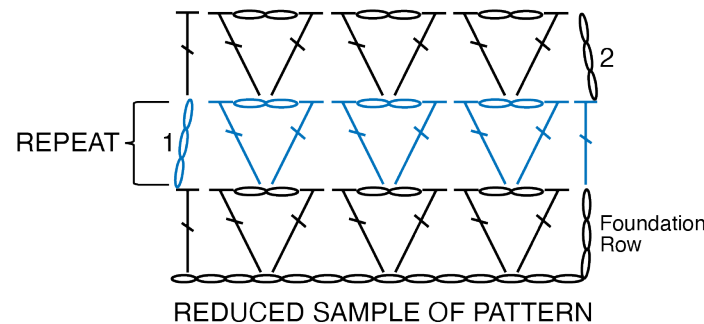
Rep last row for Pat until work from beg measures **9¾** (**10¾-12-13¼-14¼-15½**)" [**25** (**27.5-30.5-33.5-36-39.5**) cm].

Fasten off, leaving a 20" [51 cm] long tail for seaming.

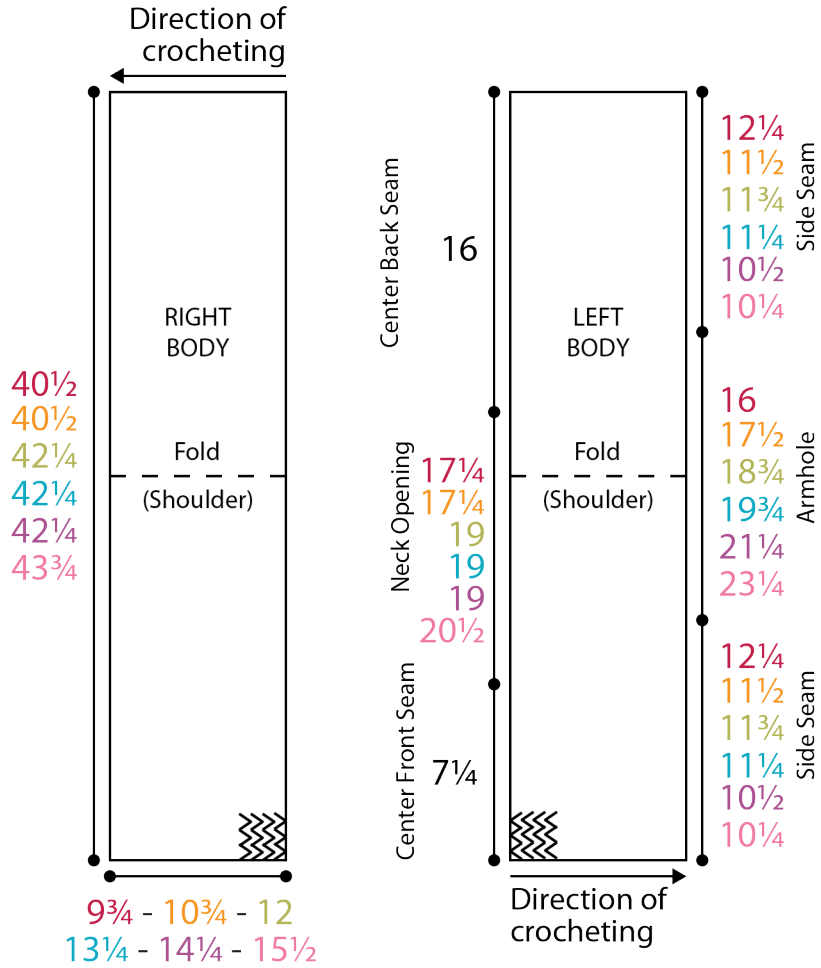
FINISHING

Pin both pieces to measurements. Cover with damp cloth leaving cloth to dry.

Position Right Body and Left Body with RS facing and V-sts pointing outward, as shown in photo. Using Schematics for measurement reference (*see page 3*), place markers on both pieces to indicate Center Front Seam, Center Back Seam and Side Seams. Using yarn tails, sew Center Front Seam, Center Back Seam then Side Seams along dashed lines shown in Assembly Diagrams.



SCHEMATICS



ASSEMBLY DIAGRAMS

