



MAKE THIS

COZY CROCHET GRANNY CARDIGAN

SIZES XS/S/M/L-XL/2/3XL



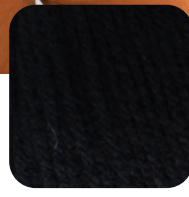
Moody
Cherry




Cyber
Leaf



Carnation
Code



Black

 CROCHET | SKILL LEVEL: **EASY**





MAKE THIS

WHAT YOU'LL NEED



GAUGE

Motif = 6" [15 cm] square with larger hook.



YARN

- **Red Heart® All in One™ Granny Square™** (8.8 oz/250 g; 417 yds/381 m)

COLORS

Quantity

Size **XS/S/M/L** **XL/2/3XL**

- **Contrast A** Moody Cherry (2019)



2
15

2
16

balls
Granny Squares

- **Contrast B** Cyber Leaf (2021)



1
14

2
19

ball(s)
Granny Squares

- **Contrast C** Carnation Code (2020)



1
13

2
19

ball(s)
Granny Squares

- **Red Heart® Super Saver®** (7 oz/198 g; 364 yds/333 m)

- **Contrast D** Black (0312)

2
490/445

2
580/528

balls
yds/m

TOOLS

- Sizes U.S. H/8 (5 mm) and U.S. I/9 (5.5 mm) Susan Bates® Silvalume® crochet hooks **or size needed to obtain gauge.**
- Susan Bates® yarn needle.
- Tape measure.



MAKE THIS

INSTRUCTIONS

The instructions are written for **XS/S/M/L** size. If changes are necessary, the instructions will be written **XS/S/M/L** (**XL/2/3XL**). Numbers for each size are shown in the same color throughout the pattern. When only one number is given in black, it applies to all sizes.

USING THIS GUIDE

Click on the underlined words throughout the pattern to access our library of helpful tools.

NOTES

- Motifs begin with Color 1 (shortest color rep) from center of pull-skein, leaving a 4" [10 cm] tail to **weave in**.
- Each color aligns with 1 round (rnd) in the Motif with 5 colors in total. If too much color is left at end of rnd, pull back some stitches (sts) and slightly loosen gauge to re-work sts and finish at color change. If too little color is left, pull back some sts and slightly tighten gauge to re-work sts and finish at color change.
- When Motif is complete, cut yarn where Color 5 (longest color rep) ends, leaving a tail for weaving in. Begin next Motif with Color 1 and repeat 5 rnds for each Motif.
- Granny Square how to: <https://www.yarnspirations.com/pages/how-to-granny-square-guide>

ABBREVIATIONS

Beg = Beginning	Rep = Repeat	St(s) = Stitch(es)
Ch = Chain(s)	Rnd(s) = Round(s)	Tog = Together
Cont = Continue(ity)	RS = Right side	WS = Wrong side
Dc = Double crochet	Sc = Single crochet	Yoh = Yarn over hook
Hdc = Half double crochet	Sl st = Slip stitch	
	Sp(s) = Space(s)	

DETERMINING YOUR SIZE

Click [here](#) to learn how to take proper measurements for the best fit.

MEASUREMENTS

SIZES	XS/S/M/L	XL/2/3XL
TO FIT CHEST	28-42" [71-106.5 cm]	44-54" [102-137 cm]
FINISHED CHEST	50" [127 cm]	62" [157.5 cm]

Model is wearing size **XS/S/M/L**. Model has 34" [86.5 cm] chest and is 5 feet 10 inches tall.





MAKE THIS

ABBREVIATIONS

Beg = Beginning

Ch = Chain(s)

Cont = Continue(ity)

Dc = Double crochet

Hdc = Half double
crochet

Rep = Repeat

Rnd(s) = Round(s)

RS = Right side

Sc = Single crochet

Sl st = Slip stitch

Sp(s) = Space(s)

St(s) = Stitch(es)

Tog = Together

WS = Wrong side

Yoh = Yarn over hook

INSTRUCTIONS

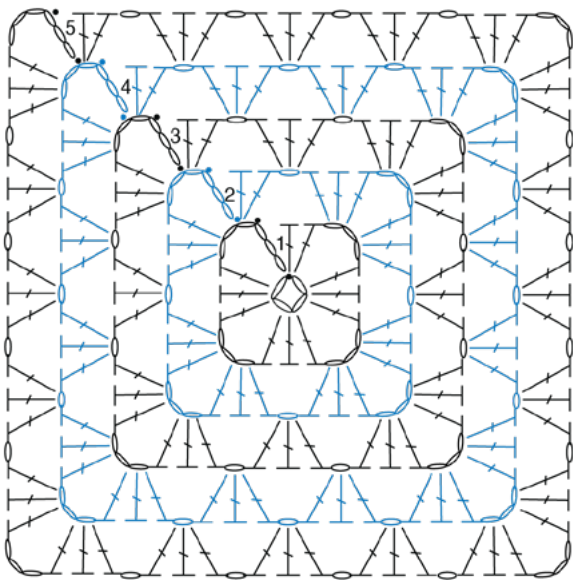
MOTIFS

Size **XS/S/M/L** - make 15 with A, 13 with B and 14 with C.

Size **XL/2/3XL** - make 16 with A, 19 each with B and C.

Notes:

- Ch 3 at beg of rnd counts as **double crochet** (dc).
- Ch 6 at beg of rnds counts as dc and ch-3 sp.
- Join all rnds with **slip stitch** (sl st) to 3rd ch of ch-6 unless otherwise indicated.



STITCH KEY

○ = chain (ch)

• = slip stitch (sl st)

┆ = double crochet (dc)

Granny Square how to:

<https://www.yarnspirations.com/pages/how-to-granny-square-guide>

With larger hook and Color 1, ch 4. Join with sl st to first ch to form ring.

1st rnd: (RS). Ch 6. (3 dc. Ch 3) 3 times in ring. 2 dc in ring. Join.

2nd rnd: Sl st in ch-3 sp. Ch 6. 3 dc in same ch-3 sp. *Ch 1. (3 dc. Ch 3. 3 dc) in next ch-3 sp. Rep from * twice more. Ch 1. 2 dc in first ch-3 sp. Join.

3rd rnd: Sl st in ch-3 sp. Ch 6. 3 dc in same ch-3 sp. *Ch 1. 3 dc in next ch-1 sp. Ch 1. (3 dc. Ch 3. 3 dc) in next ch-3 sp. Rep from * twice more. Ch 1. 3 dc in last ch-1 sp. Ch 1. 2 dc in first ch-3 sp. Join.

4th and 5th rnds: Sl st in ch-3 sp. Ch 6. 3 dc in same ch-3 sp. *(Ch 1. 3 dc) in each ch-1 sp to next ch-3 sp. Ch 1.** (3 dc. Ch 3. 3 dc) in next ch-3 sp. Rep from * twice more, then from * to ** once. 2 dc in first ch-3 sp. Join.

Fasten off.





MAKE THIS

ABBREVIATIONS

Beg = Beginning	Rep = Repeat	St(s) = Stitch(es)
Ch = Chain(s)	Rnd(s) = Round(s)	Tog = Together
Cont = Continue(ity)	RS = Right side	WS = Wrong side
Dc = Double crochet	Sc = Single crochet	Yoh = Yarn over hook
Hdc = Half double crochet	Sl st = Slip stitch	
	Sp(s) = Space(s)	

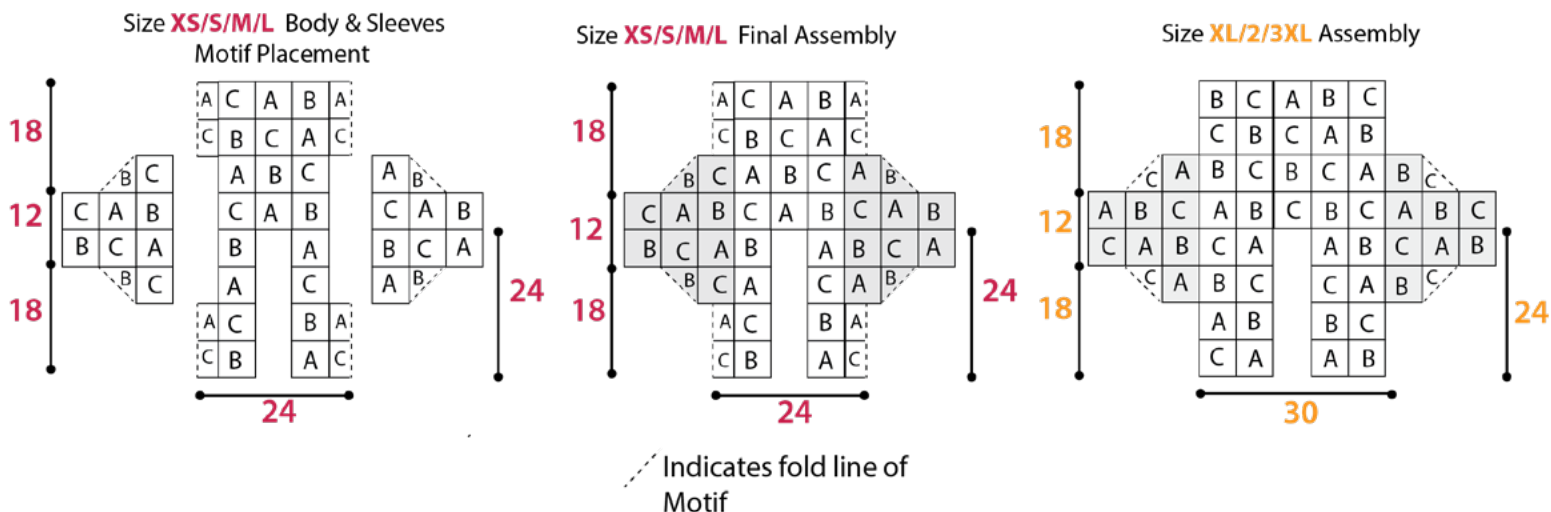
INSTRUCTIONS

ASSEMBLY

Note: Join Motifs tog using D as shown in diagrams below.

Size XS/S/M/L only: Sleeves are joined separately then sewn into Body after Body is assembled. Note folded Motifs on side seams of Body will leave a 24" [61 cm] square total armhole opening for sleeves on each side (see shaded sections on diagram for square armhole sleeve placement).

All Sizes: Join Motifs: Hold RS of 2 Motifs facing each other with sts aligned. With larger hook, join D (black) with sl st in ch-2 corners of aligned Motifs at top **right**. With RS facing each other, following diagrams, join Motifs, matching lettered sides and working rows of sl st loosely through both thicknesses. **Fasten off**.



Sleeve Edging: 1st row: (RS). With smaller hook, join D with sl st in lower edge of Sleeve and work 38 **single crochet** (sc) evenly across. Turn.
2nd to 6th rows: Ch 1. 1 sc in each sc to end of row. Turn.
Fasten off. Sew sleeve edging seam.



MAKE THIS

ABBREVIATIONS

Beg = Beginning

Ch = Chain(s)

Cont = Continue(ity)

Dc = Double crochet

Hdc = Half double
crochet

Rep = Repeat

Rnd(s) = Round(s)

RS = Right side

Sc = Single crochet

Sl st = Slip stitch

Sp(s) = Space(s)

St(s) = Stitch(es)

Tog = Together

WS = Wrong side

Yoh = Yarn over hook

INSTRUCTIONS

Lower Edging: 1st row: (RS). With smaller hook, join D with sl st in lower edge of Left Front corner and work **single crochet** (sc) evenly across lower edge to corner of Right Front. Turn.

2nd to 6th rows: Ch 1. 1 sc in each sc to end of row. Turn.

Fasten off.

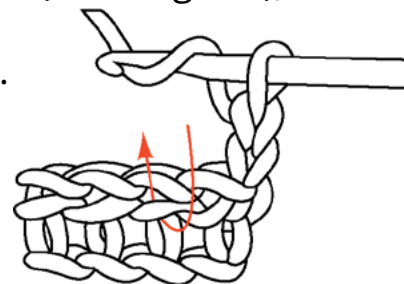
Collar and Front Band: 1st row: (RS). With smaller hook, join D with sl st in lower edge of Right Front and work sc evenly up Right Front, across back neck and down Left Front. Turn.

2nd row: Ch 2 [**does not** count as **half double crochet** (hdc)]. 1 hdc in each sc to end of row. Turn.

3rd row: Ch 2. Working into horizontal loop lying below next st (see diagram), work 1 hdc in each hdc to end of row. Turn.

Rep last row until Collar and Front Band measures 6" [15 cm].

Fasten off.



We love seeing your makes! Share your photos using #YARNSPO and tag us @yarnspirations on Instagram or find us on Facebook.