



chic sheep
by Marly Bird™

Entwined Chic Cable Sweater

This cowl-neck sweater features loads of texture and a flattering high-low hemline. The gorgeous entwined cable is crocheted with an interesting combination of stitches.

LW5899

©2017 Coats & Clark

LW5899 Entwined Chic Cable Sweater



chic sheep
Marly Bird

crochet



INTERMEDIATE

Designed by Jennifer Pionk

What you will need:

RED HEART® Chic Sheep by Marly Bird™:
7 (8, 9, 10, 11, 12) balls 5360 Suede

Susan Bates® Crochet Hook: 5.5 mm [US I-9] for ribbing on body, 5 mm [US H-8] for body and sleeve, 4 mm [US G-6] for ribbed cuff, 5 mm [US H-8] and 6 mm [US J-10] for cowl

Yarn needle, Stitch Markers, Rust Proof Pins, Spray Bottle

GAUGE: 14 extended single crochet = 4" (10 cm); 12 rows = 4" (10cm) for body. 18 stitches = 4" (10 cm); 24 rows = 4" (10 cm) for ribbed cuff. 15 stitches = 4" (10 cm); 14 rows = 4 1/4" (11 cm). **CHECK YOUR GAUGE. Use any size hook to obtain the gauge.**

BUY YARN



RED HEART® Chic Sheep by Marly Bird™, Art. R170 100% Merino Wool available 3.5 oz (100 g), 186 yd (170 m) balls



Directions are for size x-small; changes for sizes small, medium, large, x-large, and xx-large are in parentheses.

Sweater measures: 34 (38, 42, 46, 50, 54)" [86.5 (96.5, 106.5, 117, 127, 137) cm] in bust circumference, 19 (19½, 19½, 20, 20¼, 20¼)" [48.5 (49.5, 49.5, 51.5, 51.5, 51.5) cm] in length from shoulder to bottom edge of front panel. Back panel is 4" (10 cm) longer. Pullover is relaxed in fit, shown in Small.

Special Stitches

Extended Single Crochet (extended sc): Insert hook into stitch indicated, yo, pull up a loop, yo, pull thru 1 loop on hook, yo, pull thru remaining two loops on hook.

Extended Single Crochet 2 together (extended sc2tog): Insert hook into stitch indicated, yo, pull up a loop, yo, pull thru 1 loop on hook, insert hook into next st, yo, pull up a loop, yo, pull thru 1 loop on hook, yo, pull thru remaining loops on hook.

Front Post Double Crochet (fpdc): Yo, insert hook from the front around post of stitch indicated, yo and pull up a loop, [yo and draw through 2 loops on hook] twice.

Front Post Treble Crochet (fptr): Yo twice, insert hook from the front around post of stitch indicated, yo and pull up a loop, [yo and draw through 2 loops on hook] 3 times.

Back Post Treble Crochet (bptr): Yo twice, insert hook from the back around post of stitch indicated, yo and pull up a loop, [yo and draw through 2 loops on hook] 3 times.

Cable Twist: Skip the next post st, fpdc around the next post st, working in front of the post st just worked, fpdc around the skipped post st.

Forward Cable (fwd cable): Skip each of the next 2 post sts, fptr around each of the next 2 post sts, working in front of the post sts just made, fptr around each skipped post st.

Backward Cable (bwd cable): Skip each of the next 2 post sts, fptr around each of the next 2 post sts, working behind the post sts just made, fptr around each of the 2 skipped post sts.

Single Crochet 2 Together (sc2tog): Insert hook into st indicated, yo and pull up a loop, insert hook into next st indication, yo and pull up a loop, yo and draw through all three loops on hook.

SWEATER BACK

With 5.5 mm [US I-9] hook, Ch 61 (67, 75, 81, 89, 95)

Row 1 (RS): (Note: Work sts into the back ridge of the foundation ch), slip st in the 2nd ch from your hook, slip st in each ch across. Turn- 60 (66, 74, 80, 88, 94) slip st.

Rows 2 - 4: (Note: Work sts in the back loop only) Ch 1, slip st in each st across. Turn.

Rows (5 - 70) (5 - 72) (5 - 72) (5 - 74) (5 - 74) (5 - 74): Switch to a 5 mm [US H-8] hook, ch 1, extended sc in each st across. Turn.

Fasten off.

FRONT

With 5.5 mm [US I-9] hook, Ch 61 (67, 75, 81, 89, 95)

Row 1 (RS): (Note: Work sts into the back ridge of the foundation ch), slip st in the 2nd ch from your hook, slip st in each ch across. Turn- 60 (66, 74, 80, 88, 94) slip st.

continued...





Rows 2 - 4: (Note: Work sts in the back loop only) Ch 1, slip st in each st across. Turn.

Row 5: Switch to a 5mm [US H-8] hook, ch 1, extended sc in each st across. Turn.

Row 6: Ch 1, extended sc in next 18 (21, 25, 28, 32, 35) sts, bpd around next 2 sts, extended sc in next 5 sts, bpd around next 4 sts, extended sc in next 2 sts, bpd around next 4 sts, extended sc in next 5 sts, bpd around next 2 sts, extended sc in each remaining st across. Turn.

Row 7: Ch 1, extended sc in next 18 (21, 25, 28, 32, 35) sts, cable twist over next 2 post sts, extended sc in next 5 sts, fwd cable over next 4 post sts, extended sc in next 2 sts, bwd cable over next 4 post sts, extended sc in next 5 sts, cable twist over next 2 post sts, extended sc in each remaining st across. Turn.

Row 8: Ch 1, extended sc in next 18 (21, 25, 28, 32, 35) sts, bpd around next 2 post sts, extended sc in next 4 sts, skip the next st, *bpd around next post st, (bpd, extended sc) in next post st, (extended sc, bpd) in next post st, bpd around next post st*, skip next 2 sts; repeat from * to *, skip next st, extended sc in next 4 sts, bpd around next 2 post sts, extended sc in each remaining st across. Turn.

Row 9: Ch 1, extended sc in next 18 (21, 25, 28, 32, 35) sts, fpdc around next 2 post sts, extended sc in next 3 sts, skip next st, fpdc around next post st, (fpdc, extended sc) in next post st, extended sc in next 2 sts, bwd cable over next 4 sts, extended sc in next 2 sts, (extended sc, fpdc) in next post st, fpdc around next post st, skip next st, extended sc in next 3 sts, fpdc around next 2 post sts, extended sc in each remaining st across. Turn.

Row 10: Ch 1, extended sc in next 18 (21, 25, 28, 32, 35) sts, bpd around next post 2 sts, extended sc in next 2 sts, skip next st, bpd around next post st, (bpd, extended sc) in next post st, extended sc in next 2 sts, skip next st, bpd around next post st, (bpd, extended sc) in next post st, (extended sc, bpd) in next post st, bpd around next post st, skip next st, extended sc in next 2 sts, bpd around next 2 post sts, extended sc in each remaining st across. Turn.

Row 11: Ch 1, extended sc in next 18 (21, 25, 28, 32, 35) sts, fpdc around next 2 post sts, extended sc next 2 sts, fpdc around next 2 post sts, extended sc in next 3 sts, fpdc around next 2 post sts, extended sc in next 2 sts, fpdc around next 2 post sts, extended sc in next 3 sts, fpdc around next 2 post sts, extended sc in next 2 sts, fpdc around next 2 post sts, extended sc in each remaining st across. Turn.

Row 12: Ch 1, extended sc in next 18 (21, 25, 28, 32, 35) sts, bpd around next 2 post sts, extended sc in next 2 sts, bpd around next 2 post sts, extended sc in next 3 sts, bpd around next 2 post sts, extended sc in next 2 sts, bpd around next 2 post sts, extended sc in next 3 sts, bpd around next 2 post sts, extended sc in next 2 sts, bpd around next 2 post sts, extended sc in each remaining st across. Turn.

Row 13: Repeat Row 11

Row 14: Ch 1, extended sc in next 18 (21, 25, 28, 32, 35) sts, bpd around next 2 post sts, extended sc in next 2 sts, bpd around next 2 post sts, extended sc in next 3 sts, (extended sc, bpd) in the next post st, bpd around the next post st, skip next 2 sts, bpd around

next post st, (bpd, extended sc) in next post st, extended sc in next 3 sts, bpd around next 2 post sts, extended sc in next 2 sts, bpd around next 2 post sts, extended sc in each remaining st across. Turn.

Row 15: Ch 1, extended sc in next 18 (21, 25, 28, 32, 35) sts, fpdc around next 2 post sts, extended sc next 2 sts, fpdc around next 2 post sts, extended sc in each of the next 4 sts, bwd cable over next 4 post sts, extended sc in next 4 sts, fpdc around next 2 post sts, extended sc in next 2 sts, fpdc around next 2 post sts, extended sc in each remaining st across. Turn.

Row 16: Ch 1, extended sc in next 18 (21, 25, 28, 32, 35) sts, bpd around next 2 post sts, extended sc in next 2 sts, bpd around next 2 post sts, extended sc in next 4 sts, bpd around next 4 post sts, extended sc in next 4 sts, bpd around next 2 post sts, extended sc next 2 sts, bpd around next 2 post sts, extended sc in each remaining st across. Turn.

Row 17: Ch 1, extended sc in next 18 (21, 25, 28, 32, 35) sts, fpdc around next 2 post sts, extended sc in next 2 sts, (extended sc, fpdc) in next post st, fpdc around next post st, skip next st, extended sc in next 3 sts, bwd cable over next 4 post sts, extended sc in next 3 sts, skip the next st, fpdc around next post st, (fpdc, extended sc) in next post st, extended sc in next 2 sts, fpdc around next 2 post sts, extended sc in each remaining st across. Turn.

Row 18: Ch 1, extended sc in next 18 (21, 25, 28, 32, 35) sts, bpd around next 2 post sts, extended sc in next 3 sts, [(extended sc, bpd) in next post st, bpd around next post st, skip next st, extended sc next st, skip next st, bpd around next post st, (bpd, extended sc) in next post st] twice, extended sc in

next 3 sts, bpd around next 2 post sts, extended sc in each remaining st across. Turn.

Row 19: Ch 1, extended sc in next 18 (21, 25, 28, 32, 35) sts, cable twist over next 2 post sts, extended sc in next 4 sts, extended sc in next post st, fwd cable around the previous and next 3 post sts (skip extended sc in middle of post sts), extended sc in next 2 sts, bwd cable around next 4 post sts (skip extended sc in middle of post sts), extended sc in previous post st (used in bwd cable) extended sc in next 4 sts, cable twist over next 2 post sts, extended sc in each remaining st across. Turn.

Rows (20 - 58) (20 - 60) (20 - 60) (20 - 62) (20 - 62) (20 - 62): Repeat Rows 6 - 19, ending with Row 16 (18, 18, 6, 6, 6). Do not fasten off.

Left Shoulder

Row 1 (RS): Ch 1, extended sc in next 14 (18, 21, 25, 26, 30) sts, skip 31 (29, 31, 29, 35, 33) sts and place a stitch marker in the next st (to mark the beginning of the right shoulder). Turn- 14 (18, 21, 25, 26, 30 sts).

Rows (2 - 7) (2 - 7) (2 - 7) (2 - 7) (2 - 9) (2 - 9): Ch 1, extended sc in each st across. Turn. Fasten off.

Right Shoulder

Row 1 (RS): Join yarn with slip st in marked st from Row 1 of Left Shoulder, ch 1 (does not count as a st), extended sc in each st across. Turn- 14 (18, 21, 25, 26, 30 sts).

Rows (2 - 7) (2 - 7) (2 - 7) (2 - 7) (2 - 9) (2 - 9): Ch 1, extended sc in each st across. Turn. Fasten off.

continued...





SLEEVE

Make 2

With 5.5mm [US I-9] hook, Ch 47 (51, 54, 56, 61, 64)

Row 1 (RS): Switch to 5mm [US H-8] hook, extended sc in the 2nd ch from your hook (work in back ridge of foundation ch), extended sc in each ch across. Turn- 46 (50, 54, 56, 60, 64) sts.

Rows 2 - 4: Ch 1, extended sc in each st across. Turn.

Rows (5-18)(5-20)(5-22)(5-24)

(5-26): Ch 1, extended sc2tog over next 2 sts, extended sc in each st across. Turn- 32 (34, 36, 38, 40, 42) sts.

Row 19 (21, 21, 23, 25, 27): Ch 1, extended sc in each st across. Turn. Repeat previous row until sleeve measures 12" total. Do not fasten off.

Ribbed Cuff

Note: Cuff is worked perpendicular to sleeve attached on odd numbered rows with sc2tog.

Row 1 (RS): With 4 mm [US G-6] hook, ch 32, sc in the 2nd ch from your hook, (working in the back ridge), sc in each ch across to last ch, sc2tog in the last ch and first st on sleeve edge- 31 sts.

Row 2: Slip st in next st on sleeve edge. Turn. Slip st in back loop of each st across.

Row 3: Ch 1. Turn. Sc in back loop of each slip st across to last, sc2tog in last slip st and next st on sleeve edge. Repeat Rows 2 - 3 across the edge of the sleeve, ending with Row 3. Do not fasten off.

FINISHING

Pin back, front, and sleeves to schematic size, spray with water to block and allow to dry.

Ribbed Cuff Seaming

With the RS of the ribbed cuff facing you bring the first row up to meet the last row. Position your working yarn so that it's on the inside of the cuff. Slip stitch the rows together using the following method: insert your hook (from front to back) into the front loop of the first st of Row 1, insert your hook (from back to front) into the back loop of the first st of the last row, yo and pull thru all loops on your hook. Continue in this way across the ribbed cuff to complete the seam. Fasten off.

Seaming

Tip: Use stitch markers to help line up your work and hold it in place while seaming.

First, Seam Shoulders: Line up the last rows of the front and back panels and seam the shoulders of the front panel to the coordinating stitches of the back panel using the mattress stitch.

Next, Attach Sleeves: Find center of the first row of a sleeve and line it up with the shoulder seam. Attach Row 1 of the sleeve to the sweater using the mattress stitch.

Lastly, Seam Sleeves & Sides: Beginning nearest the ribbed cuff of a sleeve, seam the sleeve and side of sweater until you reach the top of the slip stitch edging of the front panel.

Cowl Neck

With 5 mm [US H-8] hook, join yarn with slip st on the WS of center back of neck, ch 1, work 96 (98,102, 106, 112, 118) sc around neck opening. Join with a slip st to first sc. Do not fasten off.

Note: Cowl is worked perpendicular to body attached on odd numbered rows with sc2tog.

Row 1 (RS): With 6 mm [US J-10] hook, ch 39, extended sc in 2nd ch from hook, (working in back ridge of ch), extended sc in each ch across to last ch, sc2tog in last ch and first sc on neck. -38 sts.

Note: The right side of the cowl neck will be worked on the wrong side of the sweater so that when it's folded down, the right side of the cowl neck is on the right side of the sweater.

Row 2: Slip st in next sc on neck. Turn. Slip st in back loop of each st across.

Row 3: Ch 1. Turn. Extended sc in back loop of each slip st to last, sc2tog in last slip st and next sc on neck.

Repeat Rows 2 - 3 around neck, end with Row 3. Do not fasten off.

Cowl Neck Seam

With the RS of the cowl neck facing you bring the first row up to meet the last row. Position your working yarn so that it's on the inside of the cowl. Slip stitch the rows together using the following method: insert your hook (from front to back) into the front loop of the first st of Row 1, insert your hook (from back to front) into the back loop of the first st of the last row, yo and pull thru all loops on your hook. Continue in this way across to complete the seam. Fasten off.

Weave in all ends.

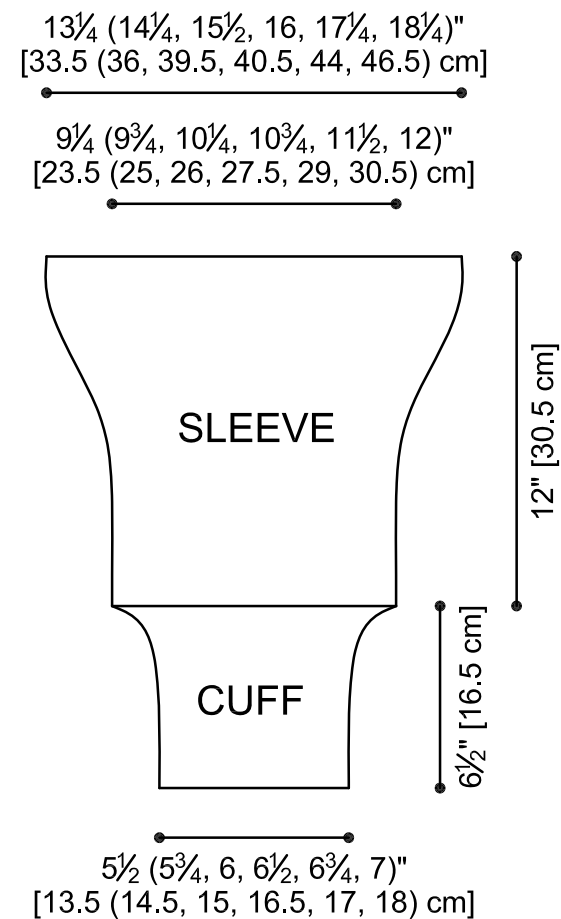
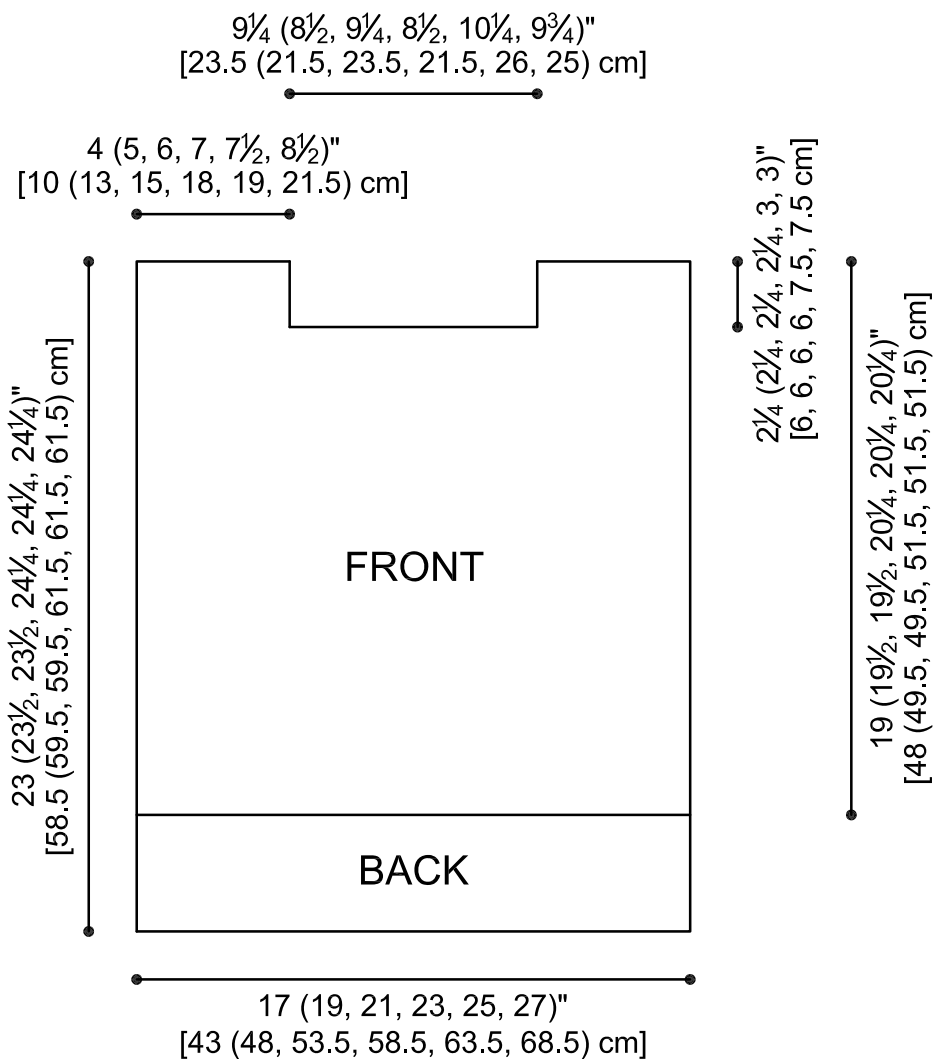
ABBREVIATIONS

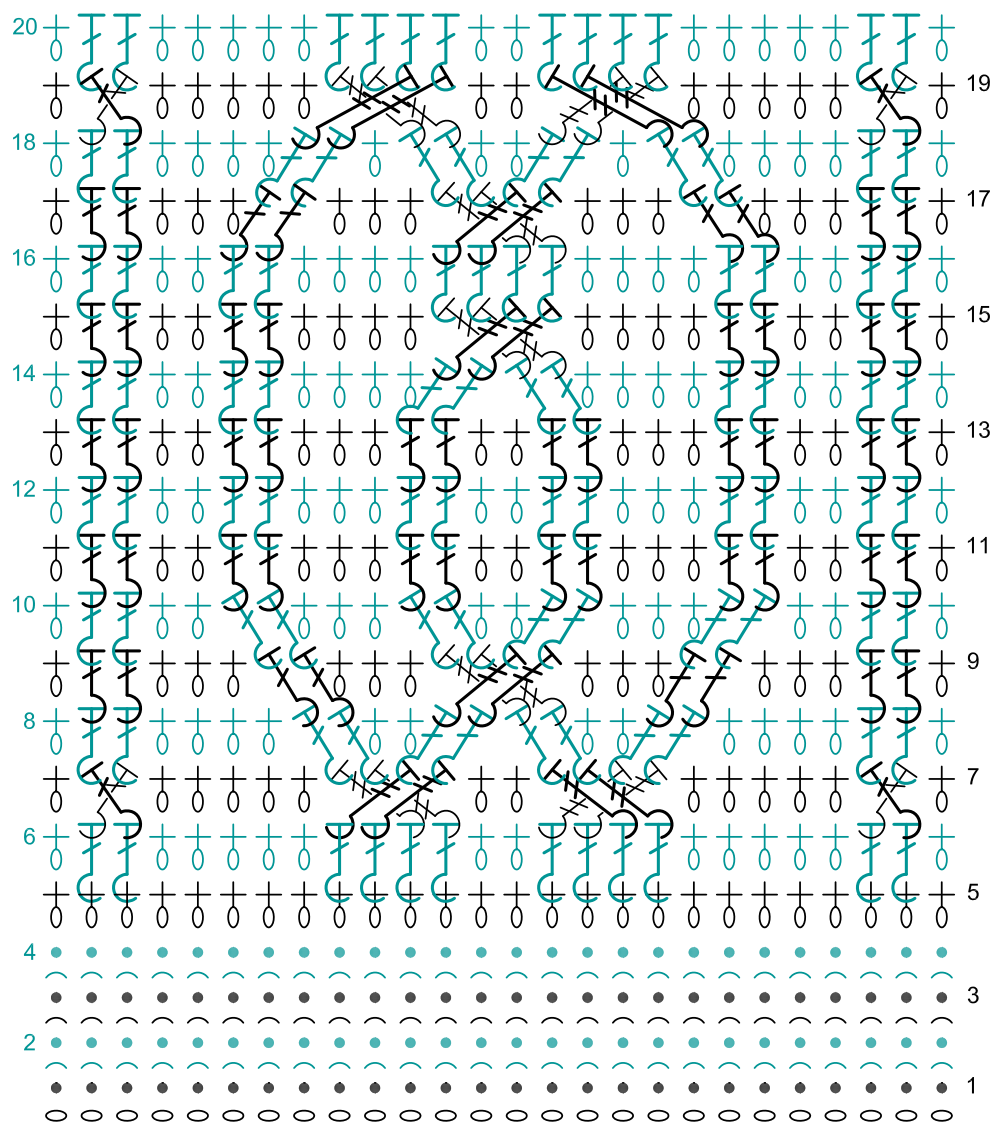
ch = chain; **st(s)** = stitch(es); **sl st** = slip stitch; **sc** = single crochet; **dc** = double crochet; **tr** = treble crochet; **tch** = turning chain; **RS** = right side; **WS** = wrong side; **()** = work directions in parentheses in same st; **[]** = work directions in brackets the number of times specified; ***** = repeat whatever follows the * as indicated.

See next 3 pages for schematic, stitch diagram and alternate photos

Note from Marly: I would like to thank Jennifer Pionk for her contribution to the **Chic Sheep by Marly Bird™** collection. Jennifer's sense of style and design aesthetic are a perfect match for this wonderful yarn and pattern collection. I think you will agree that the Entwined Chic Cable Sweater is the perfect combination of fashionable and chic crochet. Learn more about Jennifer Pionk and her designs by visiting her website, acrochetedsimplicity.com.







Entwined Cable Stitch Diagram

Symbols Key

- chain
- slip stitch
- slip stitch in back loop
- + extended single crochet
- ⌞ back post double crochet
- ⌞ front post double crochet
- ⌞ cable twist
- ⌞ forward cable
- ⌞ backward cable



LW5899 Entwined Chic Cable Sweater



chic sheep
Marilyn Bird



Find more ideas & inspiration: [redheart.com](https://www.redheart.com)

©2017 Coats & Clark



Page 7 of 7