



CROCHET | SKILL LEVEL: **EASY**

## ABBREVIATIONS

**Approx** =

Approximately

**Beg** = Begin(ning)

**Ch** = Chain(s)

**Hdc** = Half double  
crochet

**Dc** = Double crochet

**Pat** = Pattern

**Rep** = Repeat

**Sc** = Single crochet

**Sl st** = Slip stitch

**Sp(s)** = Space(s)

**St(s)** = Stitch(es)

**WS** = Wrong side

## MEASUREMENTS

Approx 25" [63.5 cm] wide x 70"  
[178 cm] long.

## GAUGE

14 sc and 18 rows = 4" [10 cm].

## INSTRUCTIONS

Ch 88 (multiple of 7 ch + 11) . See  
diagram on page 2.

**1st row:** (WS). 1 sc in 5th ch from  
hook. Ch 3. Skip next 3 ch. 1 sc in  
next ch. \*Ch 3. Skip next 2 ch. 1 sc  
in next ch. Ch 3. Skip next 3 ch.  
1 sc in next ch. Rep from \* to last  
2 ch. Ch 1. 1 hdc in last ch. Turn.

**2nd row:** Ch 1. 1 sc in first hdc.  
\*Ch 1. (1 dc. Ch 1) 4 times in next  
ch-3 sp. 1 sc in next ch-3 sp. Rep  
from \* to end of row, ending last  
rep with 1 sc in 3rd ch of beg  
ch-4. Turn.

**3rd row:** Ch 4 (counts as dc, ch 1).  
Skip first ch-1 sp. 1 sc in next ch-1  
sp. Ch 3. Skip next ch-1 sp. 1 sc  
in next ch-1 sp. \*Ch 3. Skip next  
2 ch-1 sps. 1 sc in next ch-1 sp.  
Ch 3. Skip next ch-1 sp. 1 sc in next  
ch-1 sp. Rep from \* to last ch-1 sp.  
Ch 1. 1 dc in last sc. Turn.

**4th row:** Ch 3 (counts as dc). (1 dc.  
Ch 1) twice in first ch-1 sp. 1 sc in  
next ch-3 sp. \*Ch 1. (1 dc. Ch 1)  
4 times in next ch-3 sp. 1 sc in next  
ch-3 sp. Rep from \* to last ch-1 sp.  
(Ch 1. 1 dc) twice in last ch-1 sp.  
1 dc in 3rd ch of beg ch-4. Turn.

## MATERIALS

**Red Heart® Roll With It Sparkle™** (5.29 oz/150 g; 561 yds/513 m)

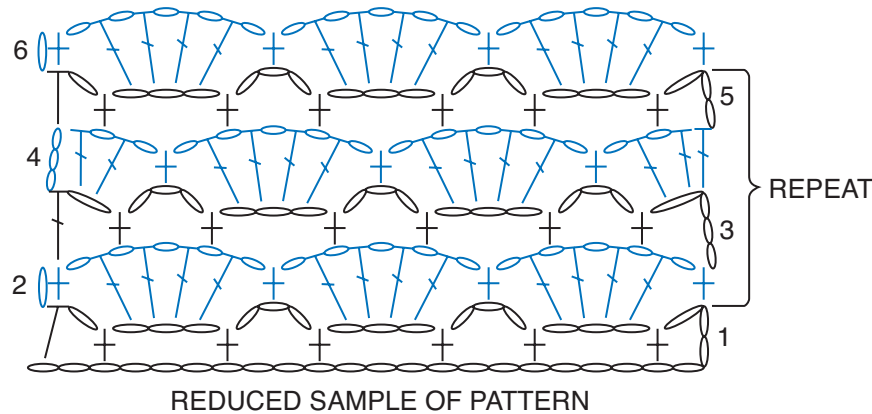
Magic (9275)





**2 ball(s)**

Size U.S. G/6 (4 mm) crochet hook **or size needed to obtain gauge.**

**5th row:** Ch 3 (counts as hdc, ch 1). 1 sc in first ch-1 sp. Ch 3. Skip next 2 ch-1 sps. 1 sc in next ch-1 sp. \*Ch 3. Skip next ch-1 sp. 1 sc in next ch-1 sp. Ch 3. Skip next 2 ch-1 sps. 1 sc in next ch-1 sp. Rep from \* to last 2 dc. Ch 1. 1 hdc in top of beg ch-3. Turn.

Rep 2nd-5th rows for pat until work from beg measures approx 70" [178 cm], ending on a 5th row. Fasten off.



- STITCH KEY
-  = chain (ch)
  -  = single crochet (sc)
  -  = half double crochet (hdc)
  -  = double crochet (dc)

