

RED HEART PINEAPPLE LACE CROCHET SHAWL



CROCHET | SKILL LEVEL: **EASY**

ABBREVIATIONS

Approx =	Approximately	Pat =	Pattern	Shell =	(2 dc. Ch 1. 2 dc) in indicated stitch
Beg =	Beginning	Rem =	Remaining	Rep =	Repeat
Ch =	Chain(s)	RS =	Right side	Sp(s) =	Space(s)
Dc =	Double crochet	Sc =	Single crochet	St(s) =	Stitch(es)
Hdc =	Half double crochet			Tr =	Treble crochet
				WS =	Wrong side

MEASUREMENTS

Approx 14½ x 52" [37 x 132 cm].

GAUGE

2 pat repeats (30 sts) and 16 rows = 5" [10 cm].

INSTRUCTIONS

Note: Ch 3 at beg of row counts as dc throughout.

Ch 394. Place marker on every 50th ch for easier counting. See diagram on page 2.

1st row: (RS). 2 dc in 4th ch from hook. *Ch 7. Skip next 5 ch. 1 sc in next ch. Ch 3. Skip next 2 ch. 1 sc in next ch. Ch 7. Skip next 5 ch.** Shell in next ch. Rep from *, ending last rep at **. 3 dc in last ch. Turn.

2nd row: Ch 3. 2 dc in first dc. *Ch 3. 1 sc in next ch-7 sp. Ch 5. 1 sc in next ch-7 sp.** Ch 3. Shell in top (ch-1 sp) of next shell. Rep from *, ending last rep at **. Ch 3. 3 dc in top of turning ch. Turn.

3rd row: Ch 3. 2 dc in first dc. *11 tr in next ch-5 sp.** Shell in top of next shell. Rep from *, ending last rep at **. 3 dc in top of turning ch. Turn.

4th row: Ch 3. 2 dc in first dc. *Ch 2. 1 sc in first tr. (Ch 3. Skip next tr. 1 sc in next tr) 5 times. Ch 2.** Shell in top of next shell. Rep from *, ending last rep at **. 3 dc in top of turning ch. Turn.

5th row: Ch 3. 2 dc in first dc. *(Ch 3. 1 sc in next ch-3 sp) 5 times. Ch 3.** Shell in top of next shell. Rep from *, ending last rep at **. 3 dc in top of turning ch. Turn.

MATERIALS

Red Heart® Croquette™ (1.6 oz/45 g; 239 yds/219 m) 160 g Stonhenge (9365) **4 balls**

Size U.S. C/2 (2.75 mm) crochet hook **or size needed to obtain gauge.**

RED HEART PINEAPPLE LACE CROCHET SHAWL

6th row: Ch 3. 2 dc in first dc. *Ch 4. Skip next ch-3 sp. 1 sc in next ch-3 sp. (Ch 3. 1 sc in next ch-3 sp) 3 times. Ch 4.** Shell in top of next shell. Rep from *, ending last rep at **. 3 dc in top of turning ch. Turn.

7th row: Ch 3. 2 dc in first dc. *Ch 5. Skip next ch-4 sp. 1 sc in next ch-3 sp. (Ch 3. 1 sc in next ch-3 sp) twice. Ch 5.** Shell in top of next shell. Rep from *, ending last rep at **. 3 dc in top of turning ch. Turn.

8th row: Ch 3. 2 dc in first dc. *Ch 7. Skip next ch-5 sp. 1 sc in next ch-3 sp. Ch 3. 1 sc in next ch-3 sp. Ch 7.** Shell in top of next shell. Rep from *, ending last rep at **. 3 dc in top of turning ch. Turn.

Rep 2nd to 8th rows for pat 6 times more. **Do not** fasten off.

Next row: (RS). Ch 1. 1 sc in first dc. *Ch 7. Skip next (2 dc. Ch 5. sc). 1 dc in next ch-3 sp. Ch 7. Skip next (sc, ch-5, 2 dc).** 1 sc in next ch-2 sp (top of shell). Rep from *, ending last rep at **. 1 sc in top of turning ch. Turn.

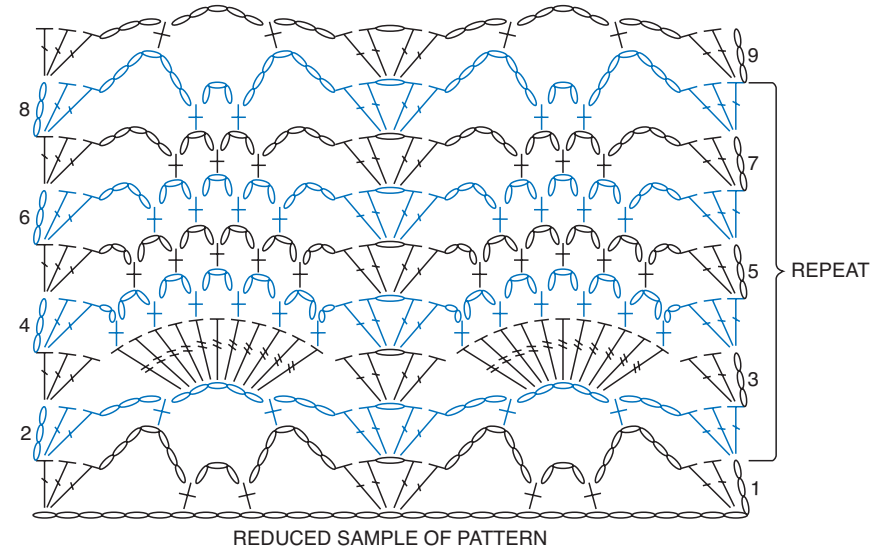
Next row: Ch 1. 1 sc in first sc and each ch, skipping sc and dc. 1 sc in corner. **Do not** turn.

Edging: 1st row: (WS). Ch 1. Working across side of Shawl, work 2 sc around each dc down left side edge to corner (100 sc). 1 sc in corner. Work 1 sc in each of rem loop of foundation ch. 1 sc in corner. 2 sc around each dc up right side edge to corner. 1 sc in corner. Turn. 593 sc.






2nd row: Ch 1. 1 sc in first sc. *Ch 3. 1 hdc in top of last sc worked. Skip next sc. 1 sc in next sc. Rep from * around to first sc of previous row. Fasten off.

FINISHING

Pin Shawl to measurements and cover with damp cloth leaving cloth to dry.



STITCH KEY

-  = chain (ch)
-  = single crochet (sc)
-  = double crochet (dc)
-  = treble crochet (tr)
-  = shell