



MATERIALS

Red Heart® Roll With It Tweed™ (5.29 oz/150 g; 296 yds/271 m)
Berry Blush (9757) **2 balls**

Size U.S. 1/9 (5.5 mm) crochet hook **or size needed to obtain gauge.**
Tapestry needle.



CROCHET | SKILL LEVEL: **INTERMEDIATE**

ABBREVIATIONS

Alt = Alternate(ing)

Approx = Approximately

Beg = Beginning

Ch = Chain(s)

Cont = Continue

Dc = Double crochet

Dcftp = Yoh and draw up a loop around post of next stitch at front of work, inserting hook from right to left. (Yoh and draw through 2 loops on hook) twice.

Inc = Increase(ing)

Dcftp3tog = (Yoh and draw up a loop around post of next stitch at front of work, inserting hook from right to left. Yoh and draw through 2 loops on hook) 3 times. Yoh and draw through all loops on hook.

Pat = Pattern

Rep = Repeat

Rnd(s) = Round(s)

RS = Right side

Sc = Single crochet

Sc2(3)tog = Draw up a loop in each of next 2(3) stitches. Yoh and draw through all loops on hook

Sl st = Slip stitch

Sp(s) = Space(s)

St(s) = Stitch(es)

Trfp = (Yoh) twice and draw up a loop around post of indicated stitch at front of work, inserting hook from right to left. (Yoh and draw through 2 loops on hook) 3 times.

WS = Wrong side

Yoh = Yarn over hook

MEASUREMENTS

Approx 65" [165 cm] long x 13" [33 cm] deep at center.

GAUGE

13 sc and 14 rows = 4" [10 cm].

INSTRUCTIONS

Notes:

- Braided Cable Pat is worked first as a long panel.

- Remainder of Shawl is worked lengthwise into side of Braided Cable Pat panel using short-turn rows of slip sts.
- Take care to work slip sts loosely enough to prevent work from pulling in.

Braided Cable Pat Panel

Set Up Rows:

Ch 4.

1st row: (RS). 2 dc in 4th ch from hook (turning ch 3 counts as dc). Turn. 3 dc.

2nd row: Ch 1. 2 sc in first dc. 1 sc in next dc. 2 sc in last dc. Turn. 5 sc.

3rd row: Ch 1. 1 sc in each of first 2 sc. 3 dcfp around post of next dc 2 rows below. 1 sc in each of last 2 sc. Turn. 7 sts.

4th row: Ch 1. 1 sc in each st to end of row. Turn.

5th row: Ch 1. 1 sc in each of first 2 sc. (3 dcfp around post of next dc 2 rows below) 3 times. 1 sc in each of last 2 sts. Turn. 13 sts.

6th row: As 4th row.

Proceed in Braided Cable Pat as follows (see chart on page 3):

1st row: (RS). Ch 1. 1 sc in each of first 2 sts. Skip next 3 sts. (1 trfp around post of next dcfp 2 rows below) 3 times. Working in front of 3 trfp just made, 1 trfp around post of each of 3 skipped dcfp 2 rows below. (1 dcfp around post of of next dcfp 2 rows below) 3 times. 1 sc in each of last 2 sts. Turn.

2nd and alt rows: Ch 1. 1 sc in each st across. Turn.

3rd row: Ch 1. 1 sc in each of first 2 sts. (1 dcfp around post of next trfp 2 rows below) 6 times. (1 dcfp around post of next dcfp 2 rows below) 3 times. 1 sc in each of last 2 sts. Turn.

5th row: Ch 1. 1 sc in each of first 2 sts. (1 dcfp around post of next dcfp 2 rows below) 3 times. Skip next 3 sts. (1 trfp around post of next dcfp 2 rows below) 3 times. Working behind 3 trfp just made, 1 trfp around post of each of 3 skipped dcfp 2 rows below. 1 sc in each of last 2 sts. Turn.

7th row: Ch 1. 1 sc in each of first 2 sts. (1 dcfp around post of next dcfp 2 rows below) 3 times. (1 dcfp around post of next trfp 2 rows below) 6 times. 1 sc in each of last 2 sts. Turn.

8th row: As 2nd row.

These 8 rows form Braided Cable Pat.

Cont in pat until Panel from beg measures approx 62" [157.5 cm], ending on a 2nd or 6th row.

Next row: Ch 1. 1 sc in each of first 2 sts. (Dcfp3tog) 3 times. 1 sc in each of last 2 sts. Turn. 7 sts.

Next row: Ch 1. 1 sc in each st to end of row. Turn.

Next row: Ch 1. 1 sc in each of first 2 sts. Dcfp3tog. 1 sc in each of last 2 sts. Turn. 5 sts.

Next row: Ch 1. Sc2tog. 1 sc in next st. Sc2tog. Turn. 3 sts.

Next row: Ch 1. Sc3tog. **Do not** fasten off.

Short row shaping:

With RS of Braided Cable Pat Panel, work 216 sc evenly along 1 side edge (see diagram on page 3). Turn.

1st row: Ch 1. *Working in back loops only*, sl st in each of next 115 sts. Turn.

2nd row: Ch 1. *Working in back loops only*, sl st in each of next 15 sts. Turn.

3rd row: Ch 1. *Working in back loops only*, sl st in each of next 19 sts. Turn.

4th row: Ch 1. *Working in back loops only*, sl st in each of next 23 sts. Turn.

5th row: Ch 1. *Working in back loops only*, sl st in each of next 27 sts. Turn.

6th row: Ch 1. *Working in back loops only*, sl st in each of next 31 sts. Turn.

Cont as established, working an additional 4 sl sts on each row, until all 216 sts have been worked.

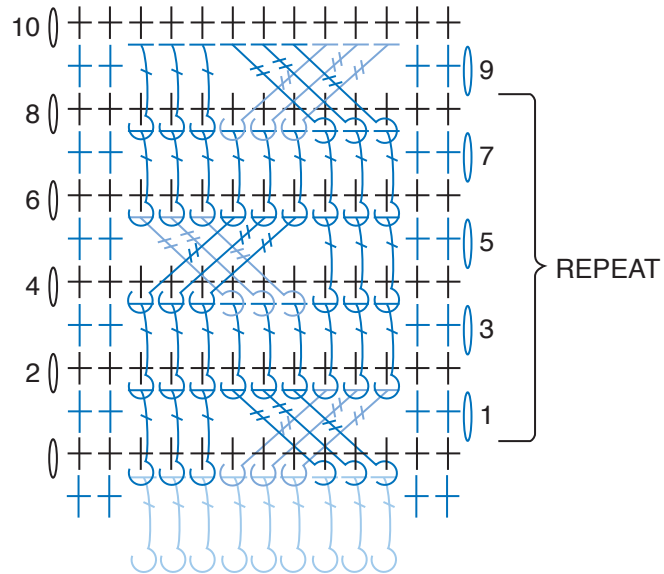
Next row: Ch 1. 1 sl st in each st to end of row. Fasten off.

Picot Border

With WS facing, join yarn to unworked edge of Shawl at far right corner.

Work 225 sl sts evenly along edge. Turn.

1st row: Ch 3. 1 sc in 2nd and 3rd ch from hook. *(Sl st in next st) twice. Ch 3. 1 sc in 2nd and 3rd ch from hook. Rep from * to last st. Sl st in last st. Fasten off.



- STITCH KEY**
- = chain (ch)
 - ⊕ = single crochet (sc)
 - ⌈ = double crochet (dc)
 - ⌋ = front post dc (dcfp)
 - ⌋ = front post tr (trfp)

