



MATERIALS

Red Heart® Roll With It Sparkle™ (5.29 oz/150 g; 561 yds/513 m)
 Krystal (9801) **1 ball**

Size U.S. H/8 (5 mm) crochet hook **or size needed to obtain gauge.**
 2 stitch markers.



CROCHET | SKILL LEVEL: **EASY**

ABBREVIATIONS

Approx = Approximately
Beg = Beginning
Ch = Chain(s)
Dc = Double crochet
Hdc = Half double crochet
Picot = Ch 3. Sl st in 3rd ch from hook
PM = Place Marker
Rep = Repeat

RS = Right side
Sc = Single crochet
Shell = (3 tr. Ch 1. 3 tr) in indicated stitch
Sl st = Slip stitch
Sp(s) = Space(s)
St(s) = Stitch(es)
Tr = Treble crochet
Yoh = Yarn over hook

MEASUREMENTS

Approx 56" [142 cm] wide x 35" [89 cm] deep.

GAUGE

15 sc and 16 rows = 4" [10 cm].

INSTRUCTIONS

Ch 4. Join with sl st to form a ring. See diagram on page 2.

1st row: (WS). Ch 7 (counts as tr and ch 3). (1 dc. Ch 3. 1 tr) in ring. Turn.

2nd row: Ch 7 (counts as tr and ch 3). Shell in next ch-3 sp. Ch 2. 1 dc in next dc. PM on just made dc for center of shawl. Ch 2. Shell in last ch-7 sp. Ch 3. 1 tr in 4th ch of same ch 7. Turn.

3rd row: Ch 7 (counts as tr and ch 3). 1 dc in first ch-3 sp. Ch 3. 1 sc in top (ch-1 sp) of next shell. Ch 3. (1 dc. Ch 3. 1 dc) in center dc. Move marker on just made ch-3 sp for center of shawl. Ch 3. 1 sc in top (ch-1 sp) of next shell. Ch 3. 1 dc in last ch-7 sp. Ch 3. 1 tr in 4th ch of same ch 7. Turn.

4th row: Ch 7 (counts as tr and ch 3). Shell in first ch-3 sp. *Ch 1. 1 sc in next ch-3 sp. Ch 5. 1 sc in next ch-3 sp.* Ch 1. (Shell. Ch 2. 1 dc. Ch 2. Shell) in center ch-3 sp. Rep from * to * once more. Ch 1. Shell in last ch-7 sp. Ch 3. 1 tr in 4th ch of same ch 7. Turn.

RED HEART ALLOVER LACE TRIANGULAR CROCHET SHAWL

5th row: Ch 7 (counts as tr and ch 3). 1 dc in first ch-3 sp. *Ch 3. 1 sc in top of next shell. Ch 3.** (1 dc. Ch 3. 1 dc) in next ch-5 sp. Rep from * to ** once more.* (1 dc. Ch 3. 1 dc) in center dc. Rep from * to * once more. 1 dc in last ch-7 sp. Ch 3. 1 tr in 4th ch of same ch 7. Turn.

6th row: Ch 7 (counts as tr and ch 3). Shell in first ch-3 sp. *Ch 1. 1 sc in next ch-3 sp. Ch 5. 1 sc in next ch-3 sp.** Ch 1. Shell in next ch-3 sp. Rep from * to ** once more.* Ch 1. (Shell. Ch 2. 1 dc. Ch 2. Shell) in next center ch-3 sp. Rep from * to * once more. Ch 1. Shell in last ch-7 sp. Ch 3. 1 tr in 4th ch of same ch 7. Turn.

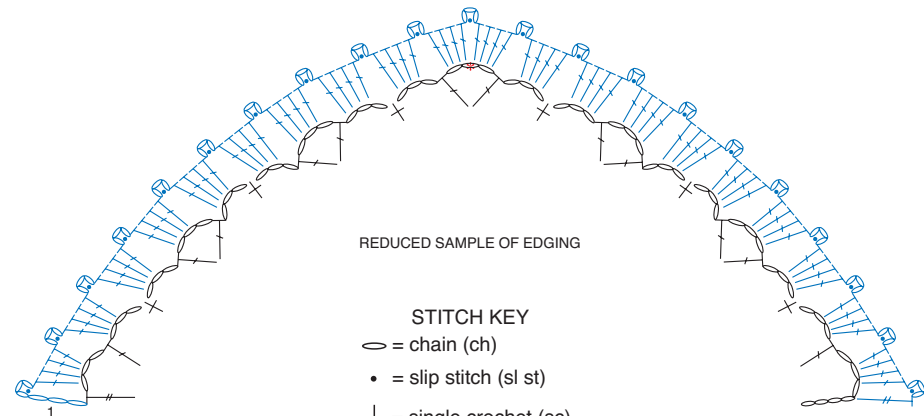
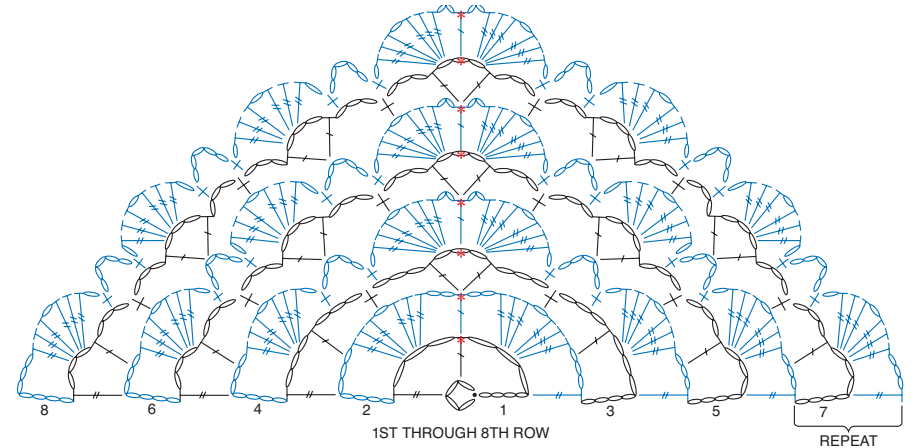
7th row: Ch 7 (counts as tr and ch 3). 1 dc in first ch-3 sp. *Ch 3. 1 sc in top of next shell. Ch 3. (1 dc. Ch 3. 1 dc) in next ch-5 sp.* Rep from * to * to center group of (Shell, ch 2, dc, ch 2, Shell). Ch 3. 1 sc in top of next shell. Ch 3. (1 dc. Ch 3. 1 dc) in center dc. Rep from * to * to last Shell. Ch 3. 1 sc in top of next shell. Ch 3. 1 dc in last ch-7 sp. Ch 3. 1 tr in 4th ch of same ch 7. Turn.

8th row: Ch 7 (counts as tr and ch 3). Shell in first ch-3 sp. *Ch 1. 1 sc in next ch-3 sp. Ch 5. 1 sc in next ch-3 sp. Ch 1. Shell in next ch-3 sp.* Rep from * to * to 2 ch-3 sps before center ch-3 sp. Ch 1. 1 sc in next ch-3 sp. Ch 5. 1 sc in next ch-3 sp. Ch 1. (Shell. Ch 2. 1 dc. Ch 2. Shell) in center ch-3 sp. Rep from * to * to las 2 ch-3 sp and ch 7. Ch 1. 1 sc in next ch-3 sp. Ch 5. 1 sc in next ch-3 sp. Ch 1. Shell in last ch-7 sp. Ch 3. 1 tr in 4th ch of same ch 7. Turn.

Rep 7th and 8th rows until Shawl along center line measures approx 35" [89 cm], ending on 7th row.

Edging

1st row: (RS). Ch 6. Sl st in 3rd ch from hook (counts as dc and picot). *4 dc in next ch-3 sp. Picot.* Rep from * to * to center ch-3 sp. (4 dc. Picot) twice in center ch-3 sp. Rep from * to * to last ch-7. 4 dc Picot in last ch 7. 1 dc in 4th ch of same ch 7. Fasten off.



REDUCED SAMPLE OF EDGING

STITCH KEY

- = chain (ch)
- = slip stitch (sl st)
- + = single crochet (sc)
- ⌋ = double crochet (dc)
- ⌋ = treble crochet (tr)
- ⌋ = shell
- ⌋ = picot
- * = marker