



Tamara Kelly  
from Moogly Blog



CROCHET | SKILL LEVEL: **EASY**

### ABBREVIATIONS

**Approx** = Approximately  
**Beg** = Beginning  
**Ch** = Chain(s)  
**Cont** = Continue(ity)  
**Dc** = Double crochet  
**Pat** = Pattern  
**PM** = Place marker  
**Rep** = Repeat

**Rnd(s)** = Round(s)  
**RS** = Right side  
**Sc** = Single crochet  
**Sl st** = Slip stitch  
**Sp(s)** = Space(s)  
**St(s)** = Stitch(es)  
**Tog** = Together  
**WS** = Wrong side

### SIZE

One size fits most.  
 Approx 16" [40.5 cm] wide x 58"  
 [147.5 cm] long before seaming.

### GAUGE

15 sts and 8 rows = 4" in Pat.

### INSTRUCTIONS

**Note:** Ch 3 at beg of row counts as dc.

Ch 61. See diagram on page 2.

**1st row:** 1 dc in 4th ch from hook (counts as 2 dc). 1 dc in next ch. \*Ch 3. Skip next 2 ch. 1 sc in next ch. Ch 3. Skip next 2 ch. 1 dc in each of next 3 ch. Rep from \* to end of ch. Turn.

**2nd row:** (RS). Ch 1. 1 sc in each of next 3 dc. \*Ch 5. Skip next ch-3 sp, next sc, and next ch-3 sp. 1 sc in each of next 3 dc. Rep from \* to end of row. Turn.

### MATERIALS

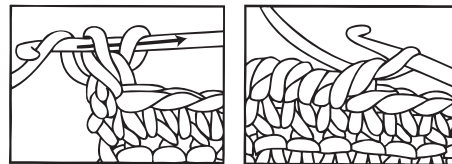
**Red Heart® Chic Sheep by Marly Bird™** (3.5 oz/100 g; 186 yds/170 m)  
 Vineyard (5628) **3 balls**

Size U.S. K/10½ (6.5 mm) crochet hook **or size needed to obtain gauge.** Stitch marker.

**3rd row:** Ch 3. 1 dc in each of next 2 sc. \*Ch 3. 1 sc in next ch-5 sp. Ch 3. 1 dc in each of next 3 sc. Rep from \* to end of row. Turn.

Last 2 rows form Pat. Cont in Pat until work from beg measures approx 58" [147.5 cm], ending on RS row. **Do not** fasten off.

**1st rnd:** (RS). Ch 1. Working from **left to right** instead of from right to left as usual, work 1 reverse sc in each sc around. Join with sl st to first st. Fasten off.



**Border:**

**1st rnd:** (WS). Ch 1. \*1 sc in each st and ch to end of row. (1 sc. Ch 2. 1 sc) in corner. Work sc evenly down side of Wrap to next corner. (1 sc. Ch 2. 1 sc) in corner. Rep from \* once more. Join with sl st to first sc. Fasten off.

**Bottom Hem**

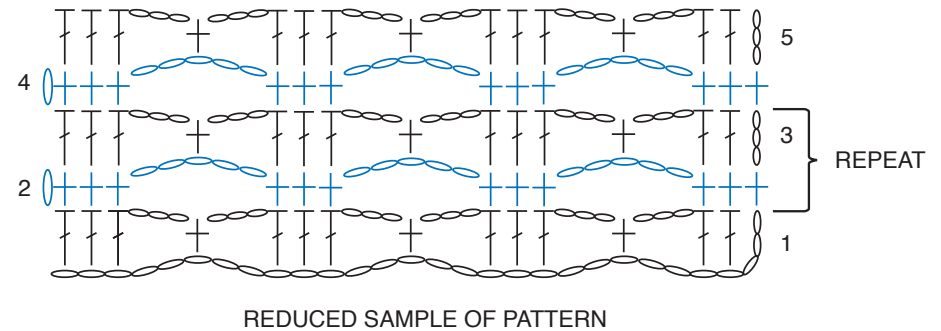
Join yarn with sl st to any st along bottom of Wrap. Work as given for Neckline Edging. Fasten off.

**FINISHING**

With RS facing, PM 16" [40.5 cm] from top right corner of Wrap. Fold, matching point A to B and point C to point D as indicated in Schematic. Seam sections tog.

**Neckline Edging**

Join yarn with sl st to any st along neckline of Wrap.



REDUCED SAMPLE OF PATTERN

STITCH KEY

- = chain (ch)
- † = single crochet (sc)
- ⌋ = double crochet (dc)

