



Designed by Shari White

## What you will need:

**RED HEART® Boutique Midnight®:**  
5 balls 9803 Borealis

**Susan Bates® Crochet Hook:**  
5.5mm [US I-9]

Yarn needle

**GAUGE:** Gauge is not important for this project.



**Boutique Midnight®**  
Art. E786, Available in  
2.5 oz (70g), 153 yd  
(140m) balls



# Open Wave Shawl

*This easy-to-wear shawl is fun to crochet and goes quickly. Made in a shaded yarn with a bit of sparkle, you'll enjoy it for day or evening wear.*

**Shawl measures 18" [45.5cm] wide x 52" [132cm] long**

## SPECIAL ABBREVIATIONS

**Fsc** (foundation single crochet) =

**First St:** Ch 2, insert hook under top 2 strands of first ch, yo, draw up a loop, yo, draw through 1 loop, yo, draw through both loops (first fsc complete).

**Remaining sts:** Insert hook under both loops of previous st, yo, draw up a loop, yo, draw through 1 loop, yo, draw through both loops.

## SHAWL

**Row 1 (Right Side):** Work 155 Fsc.

**Row 2:** Ch 1, turn, sc in next 2 sc, \*ch 7, skip next 4 sc, sc in next 3 sc; repeat from \* to last 6 sts, ch 7, skip next 4 sc, sc next 2 sc – 22 Arches.

**Row 3:** Ch 1, turn, sc in next 2 sc, \*7 sc in next ch-7 space, sc in next 3 sc; repeat from \* to last ch-7 space, 7 sc in last ch-7 space, sc in next 2 sc.

**Row 4:** Ch 7 (counts as tr and ch 3), skip next 4 sc, sc in next 3 sc, \*ch 7, skip next 7 sc, sc in next 3 sc; repeat from \* to last 4 sc, ch 3, skip next 3 sc, tr in last sc.

**Row 5:** Ch 1, turn, sc in tr, 3 sc in ch-3 space, sc in next 3 sc, \*7 sc in ch-7 space, sc in next 3 sc; repeat from \* to last ch-3 space, 3 sc in ch-3 space, sc in 4th ch of ch-7.

**Row 6:** Ch 1, turn, sc in first 2 sc, \*ch 7, skip next 7 sc, sc in next 3 sc; repeat from \* to last 9 sc, ch 7, skip next 7 sc, sc in last 2 sc. Repeat Rows 3-6 for 8 times, then Rows 3-5 once.

**Edging Row 1:** Ch 1, turn, sc in next 2 sc, \*ch 4, skip next 7 sc, sc in next 3 sc sts; repeat from \* across to last 9 sc, ch 4, skip next 7 sc, sc in next 2 sc.

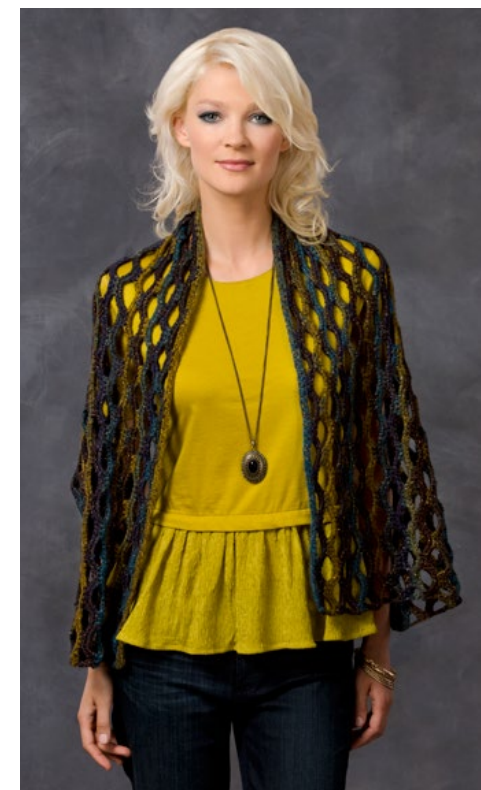
**Edging Row 2:** Ch 1, turn, sc in next 2 sc, \*4 sc in next ch-4 space, sc in next 3 sc; repeat from \* across to last 2 sc, sc in next 2 sc. Fasten off.

## FINISHING

Weave in ends.

## Abbreviations

**ch** = chain; **dc** = double crochet; **mm** = millimeters; **sc** = single crochet; **st(s)** = stitch(es); **tr** = triple or treble crochet; **yo** = yarn over; **\*** or **\*\*** = repeat whatever follows the \* or \*\* as indicated.



**SHOP KIT**