



CROCHET
SKILL LEVEL
INTERMEDIATE

Designed By Kristen Stoltzfus

What you will need:

RED HEART® Luster Sheen®:
5 (7, 9) balls 560 Violet

Susan Bates® Crochet Hook:
4.25mm [US G-6]

Yarn needle

GAUGE: Motif = 3¼" across.
CHECK YOUR GAUGE. Use any size
hook to obtain the gauge given.



RED HEART® Luster Sheen®, Art. E794
available in 3.5 oz
(100 g), 307 yd (281 m) solid color
and 3 oz (85 g), 261 yd (239 m)
multicolor balls



Petite Ruana

This shorter ruana is the perfect length for keeping your shoulders warm while you are sitting in a cool office, theater, relaxing in the evening or just reading a book. Crocheted in lightweight yarn, you'll enjoy having this wrap every season of the year.

Ruana measures 26 (32½, 36¾)" (66 [82.5, 93.5] cm) wide x 42 (49½, 56)" (106.5 [125.5, 142] cm) long excluding 6" (15 cm) fringe on each end.

Directions are given for size S/M. Changes for L/XL and 2X /3X are in parentheses where applicable and formed by adding rows of motifs in the schematics.

Special Abbreviations

V-stitch (V-st): (Dc, ch 3, dc) in same st or space.

Front Post half double crochet (FPhdc): Yarn over, insert hook from front to back to front again around the post of next st, yarn over, draw yarn through st, yarn over, draw yarn through 4 loops on hook.

FIRST MOTIF

Ch 6, join with slip st in first ch to form ring.

Round 1: Ch 1 (does not count as a st), [hdc, dc, ch 2, dc, hdc, ch 1] 4 times in ring; join with a slip st in first hdc—8 hdc; 8 dc; 4 ch-2 spaces.

Round 2: Ch 1 (does not count as a st), *FPhdc around the post of next hdc, V-st in next ch-2 space, FPhdc around the post of next hdc, ch 3, sc in next ch-1 space, ch 3; repeat from * around; join with a slip st in first FPhdc—4 V-sts, 8 FPhdc; 8 ch-3 spaces

Round 3: Ch 1 (does not count as a st), *FPhdc around the post of next FPhdc, skip next dc, V-st in ch-3 space of next V-st, skip next dc, FPhdc around the post of next FPhdc, ch 3, sc in next ch-3 space, ch 1, sc in next ch-3 space, ch 3; repeat from * around; join with a slip st in first FPhdc—4 ch-1 spaces.

Round 4: *Skip next dc, (3 dc, ch 2, 3 dc) in ch-3 space of next V-st, skip next dc, slip st in next FPhdc, (2 dc, ch 1, 2 dc) in next ch-1 space, slip st in next FPhdc; repeat from * around; ending with slip st in first slip st—40 dc; 4 ch-2 spaces; 4 ch-1 spaces. Fasten off.

Joining Motif on One Side

(follow diagram on page 3 for placement):
Rounds 1-3: Repeat Rounds 1-3 of First Motif.
Round 4: Skip next dc, (3 dc, ch 1, slip st in corresponding corner ch-2 space of previous motif, ch 1, 3 dc) in ch-3 space of next V-st, slip st in next FPhdc, (2 dc, slip st in corresponding ch-1 space of previous motif, 2 dc) in next ch-1 space, slip st in next FPhdc, skip next dc, (3 dc, ch 1, slip st in corresponding corner ch-2 space of previous motif, ch 1, 3 dc) in ch-3 space of next V-st, *skip next dc, slip st in next FPhdc, (2 dc, ch 1, 2 dc) in next ch-1 space**, slip st in next FPhdc, skip next dc, (3 dc, ch 2, 3 dc) in ch-3 space of next V-st; repeat from * around; ending last repeat at **, join with a slip st in first slip st—40 dc; 4 ch-2 spaces; 4 ch-1 spaces. Fasten off.

Joining Motif on Two Sides

(follow diagram on page 3 for placement):
Rounds 1-3: Repeat Rounds 1-3 of First Motif.
Round 4: Skip next dc, *(3 dc, ch 1, sl st in corresponding corner ch-2 space of previous motif, ch 1, 3 dc) in ch-3 space of next V-st, slip st in next FPhdc, (2 dc, slip st in corresponding ch-1 space of previous motif, 2 dc) in next ch-1 space, slip st in next FPhdc, skip next dc; repeat from * once, (3 dc, ch 1, slip st in corresponding corner ch-2 space of previous motif, ch 1, 3 dc) in ch-3 space of next V-st, **skip next dc, slip st in next FPhdc, (2 dc, ch 1, 2 dc) in next ch-1 space**, slip st in next FPhdc, skip next dc, (3 dc, ch 2, 3 dc) in ch-3 space of next V-st; repeat from ** to ** once; join with a slip st in first slip st—40 dc; 4 ch-2 spaces; 4 ch-1 spaces. Fasten off.

Continued...

SHOP KIT

BACK END EDGING

Row 1: With right side facing, join yarn in the right-hand motif's corner ch-2 space on back bottom edge, ch 1, sc in corner ch-2 space, *[(dtr, ch 2) 5 times, dtr] in next ch-1 space, sc in next corner ch-2 space**, ch 1, sc in corner ch-2 space of next motif'; rep from * across, ending last repeat at **; turn—8 (10, 11) scallops.

Row 2: Ch 1, sc in first 17 sts, *skip next st, sc in next ch 1 space, skip next st, sc in next 16 sts; repeat from * across, ending with sc in last sc; turn.

Row 3: Ch 1, skip first sc, *sc in next 8 sts, ch 6, sc in next 8 sts, skip next st; repeat from * across, ending with slip st in last sc. Fasten off.

FRONT END EDGING (work 2)

Work same as Back End Edging across 2 Front edges—3 (4, 4) scallops.

SIDE EDGING (work 2)

Row 1: With right side facing, join yarn in row-end st of Row 2 of End Edging on side edge, ch 1 (does not count as a st), hdc in each row-end st of Row 2 and Row 1, hdc in each corner ch-space and sc in each remaining st across, skipping each slip st, hdc in row-end st of Row 1 and Row 2 of End Edging on other end; turn—160 (186, 212) sts.

Row 2: Ch 1, slip st in each st across. Fasten off.

Repeat Side Edging on other side edge of Ruana.

INSIDE AND NECK EDGING:

Row 1: With right side facing, join yarn in inside's right corner in the side of Row 2 of Right Front End Edging, 1 (does not count as a st), hdc in each row-end st of Row 2 and Row 1, *hdc in each corner ch sp and sc in each remaining st, skipping each slip st across * to last ch 1 space before first corner at neck edge, sc in ch-1 space, [(dtr, ch 2) 3 times, dtr] in junction at corner, sc in next ch-1 space; repeat from * to * across to last ch-1 space before next corner join, [(dtr, ch 2) 3 times, dtr] in junction at corner, sc in next ch-1 space; repeat from * to * across, hdc in row-end st of Row 1 and Row 2 of Left Front End Edging; turn.

Row 2: Ch 1, slip st in each st across. Fasten off.

FINISHING

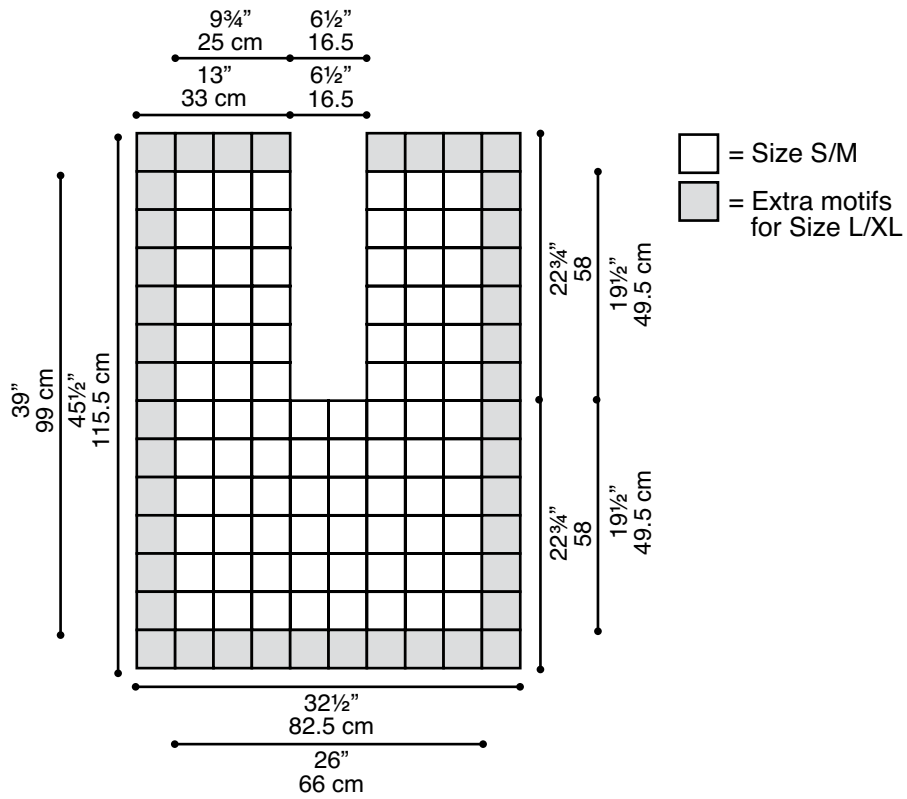
Weave in ends. Wet block for best results. Cut 12" (30.5 cm) strands of yarn. Using 15 strands for each fringe, single knot one fringe in each ch-6 loop across each End Edging.

ABBREVIATIONS

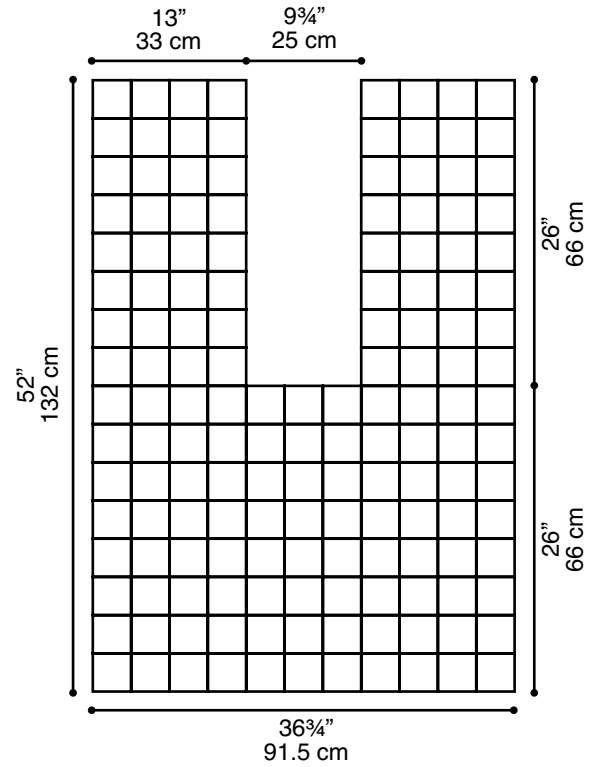
ch = chain; **dc** = double crochet; **hdc** = half double crochet; **sc** = single crochet; **sl st** = slip st; **sp(s)** = space(es); **st(s)** = stitch(es); **()** = work directions in parentheses into same st; **[]** = work directions in brackets the number of times specified; * = repeat whatever follows the * as indicated.

See diagrams on next page.





ASSEMBLY DIAGRAM
SIZES S/M AND L/XL



ASSEMBLY DIAGRAM
SIZE 2X/3X