



chic sheep
BY Marly Bird™

Interwoven Cabled Chic Shawl

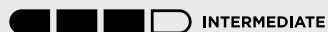
Wrap yourself in a crochet shawl that features stacked double crochets and a gorgeous cable border. Pattern also includes a scarf option with narrow double crochet section.

LW5904

©2017 Coats & Clark



crochet



Designed by Rebecca Velasquez

What you will need:

RED HEART® Chic Sheep by Marly Bird™:
7 (11) balls of 5907 Sangria

Susan Bates® Crochet Hook: 5mm [US H-8]

Yarn needle, Stitch Markers

GAUGE: 13 double crochet = 4" (10 cm); 8 rows = 4" (10cm). **CHECK YOUR GAUGE. Use any size hook to obtain the gauge.**

BUY YARN



RED HEART® Chic Sheep by Marly Bird™, Art. R170 100% Merino Wool available 3.5 oz (100 g), 186 yd (170 m) balls

Directions are for scarf; changes for shawl are in parentheses.

Project measures: 15½ (28½)" [29.5, 72.5cm] in width, 78 (78)" [198 cm] in length. Project shown in shawl size.

Pattern Notes

Turning chains do not count as first stitch.

Special Stitches

Stacked Double Crochet (stacked dc):

Sc in stitch indicated, insert hook behind leftmost vertical bar of sc just made and pull up a loop, yo and draw through 2 loops on hook.

Front Post Double Crochet (fpdc): Yo, insert hook from the front around post of stitch indicated, yo and pull up a loop, [yo and draw through 2 loops on hook] twice.

Back Post Double Crochet (bpdc): Yo, insert hook from the back around post of stitch indicated, yo and pull up a loop, [yo and draw through 2 loops on hook] twice.

Front Post Triple Treble Crochet

(fptrtr): Yo 4 times, insert hook from the front around post of stitch indicated, yo and pull up a loop, [yo and draw through 2 loops on hook] 5 times.

PATTERN

Chain 66 (108).

Row 1 (RS): Sc in 2nd ch from hook and in each ch across. Turn- 67 (107) sc.

Row 2: Stacked dc in first sc, dc in each of next 3 sc, place marker (note: move marker up with each row throughout), dc in each of next 18(60) sc, [ch 3, skip 3 sc, dc in next 3 sc] 7 times, dc in last sc. Turn.

continued...





Row 3: Stacked dc in first dc, [fpdc in next 3 dc, ch 3, skip ch-3 space] 7 times, dc in each dc across to marker, fpdc in next 3 dc, dc in last dc. Turn.

Row 4: Stacked dc in first dc, bpdc in each of next 3 dc, dc in each dc across to ch-space, [ch 3, bpdc in next 3 dc] 7 times, dc in last dc. Turn.

Row 5: Stacked dc in first dc, fpdc in each of next 3 dc, *ch 3, skip next 3 dc, fptrtr in next 3 dc, ch 3, fptrtr in 3 dc just skipped (note: place stitches in front of fptrtr just made) **, [ch 3, fpdc in next 3 dc] twice, repeat from * to **, ch 3, dc in each dc across to marker, fpdc in next 3 dc, dc in last dc. Turn.

Row 6: Stacked dc in first dc, bpdc in each of next 3 dc, dc in each dc across to ch-space, *[ch 3, bpdc in next 3trtr] twice**, [ch 3, bpdc in next 3 dc] twice; repeat from * to **, ch 3, bpdc in each of next 3 dc, dc in last dc. Turn.

Row 7: Repeat row 3.

Row 8: Repeat row 4.

Row 9: Stacked dc in first dc, [fpdc in each of next 3 dc, ch 3] 3 times, skip next 3 dc, fptrtr in each of next 3 dc, ch 3, fptrtr in each of 3 dc just skipped (note: place stitches behind fptrtr just made), [ch 3, fpdc in each of next 3 dc] twice, ch 3, dc in each dc across to marker, fpdc in each of next 3 dc, dc in last dc. Turn.

Row 10: Repeat row 4.

Row 11: Repeat row 3.

Row 12: Repeat row 4.

Rows 13-148: Repeat rows 5-12

Rows 149-155: Repeat rows 5-11

Row 156: Ch 1, sc in each dc and ch across. Fasten off.

FINISHING

Weave in all loose ends. Soak project in cool bath, wrap in towels and gently roll out water. Lay project out to schematic size and pin in place to dry.

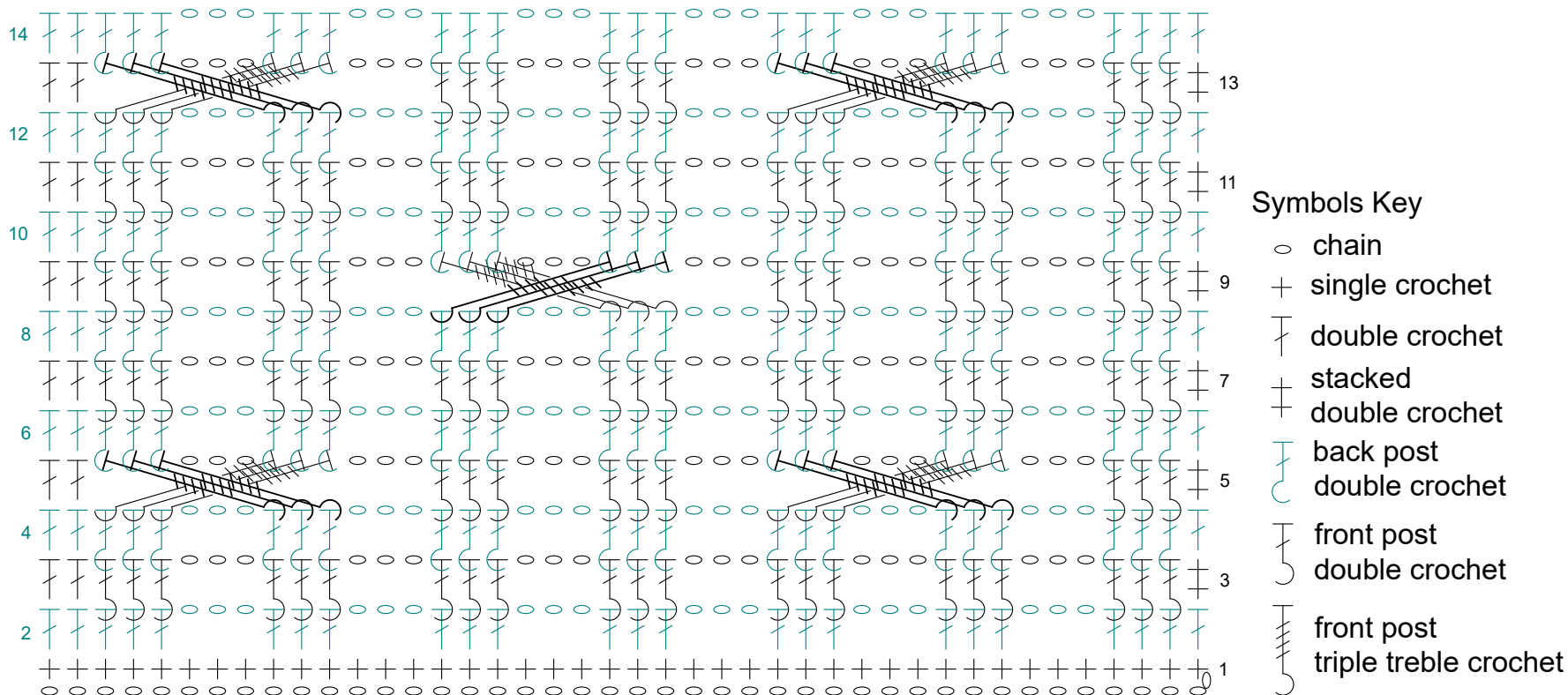
ABBREVIATIONS

ch = chain; **ch-sp** = chain space; **st(s)** = stitch(es); **sl st** = slip stitch; **sc** = single crochet; **dc** = double crochet; **tr** = treble crochet; **RS** = right side; **WS** = wrong side; **()** = work directions in parentheses in same st; **[]** = work directions in brackets the number of times specified; ***** = repeat whatever follows the * as indicated.

Note from Marly: I would like to thank my constant cheerleader and fierce friend, Rebecca Velasquez, for her contribution to the **Chic Sheep by Marly Bird™** collection. Rebecca's passion for unique stitches coupled with wearable shapes made her the perfect choice to design a wrap that showcased crochet cables that look as if they are floating on a bed of chain stitches. This wrap is a great layering piece for that chilly afternoon out or just for wrapping up on the couch and enjoying a cup of tea. To learn more about Rebecca Velasquez and her designs visit rebeccavelasquez.com

See next 2 pages for stitch diagram and alternate photo





Interwoven Cable Stitch Diagram



LW5904 Interwoven Cabled Chic Shawl



Find more ideas & inspiration: [redheart.com](https://www.redheart.com)

©2017 Coats & Clark

