



CROCHET  
SKILL LEVEL  
INTERMEDIATE



Marly Bird™

### What you will need:

**RED HEART® It's A Wrap™:** 1 ball 9274 Romance

**Susan Bates® Crochet hook:** 4mm [US G-6]

Yarn needle

**GAUGE:** 5 repeats = 4½" (11.5 cm) in Body pattern after light blocking. **CHECK YOUR GAUGE.** Use any size hook to obtain the gauge.



**RED HEART® It's A Wrap™,** Art. E864 available in 7 oz (200 g), 1,100 yd (1,006 m) balls



## Delicate Romance Shawl

This is the crochet shawl you'll depend on for special occasions, last minute invites or any date night. The cotton blend yarn looks wonderful and drapes around your shoulders beautifully.

**Shawl measures 14½ x 65" (37 x 164 cm) including edging.**

### NOTE

To create gauge swatch, ch 37, and follow Body section instructions.

### SPECIAL STITCHES

**Dc5tog (double crochet 5 together) =** [yo, insert hook in next st and pull up a loop, yo and draw through 2 loops on hook] 5 times, yo and draw through all 6 loops on hook.

**Sc2tog = Single crochet 2 together:** [Pull up a loop in next st] twice, yo and draw through all 3 loops on hook.

### SHAWL

Beginning Edging  
Ch 98.

**Row 1 (wrong side):** Sc in 2nd ch from hook and in each ch to end, turn - 97 sc.

**Row 2:** Ch 3 (counts as 1 dc), dc in first sc, ch 2, skip 3 sc, dc in next sc, \* ch 2, skip 3 sc, (dc, ch 1, dc) in next sc, ch 2, skip 3 sc, dc in next sc; repeat from \* to last 4 sc, ch 2, skip 3 sc, 2 dc in last sc, turn.

**Row 3:** Ch 3 (counts as 1 dc), dc in first dc, ch 2, skip next dc, dc5tog over next 5 sts including ch sts, \* ch 2, (dc, ch 1, dc) in next ch-1 space, ch 2, skip next dc, dc5tog over next 5 sts including ch sts, ch 2; repeat from \* to last 2 sts, skip next dc, 2 dc in last dc, turn.

**Row 4:** Ch 1, sc in first dc, \* ch 5, sc in next ch space; repeat from \* to end, ch 5, sc in last dc.

Fasten off.

### Body

Turn piece upside down and hold with right side facing.

Join new yarn with slip st in top right corner, being ready to work across unused loops of foundation ch.

**Row 1 (right side):** Ch 1, sc2tog over first 2 sts, ch 3, skip 4 sts, (sc, ch 3, sc) in next st, \* ch 3, skip 5 sts, (sc, ch 3, sc) in next st; repeat from \* to last 6 sts, ch 3, skip 4 sts, sc2tog over last 2 sts, turn.

**Row 2:** Ch 1, sc in first sc, \* ch 3, skip next ch-3 space, (sc, ch 3, sc) twice in next ch-3 space; repeat from \* to last ch-3 space, ch 3, skip last ch-3 space, sc in last sc, turn.

**Row 3:** Ch 6 (counts as 1 dc and 3 ch), skip first ch-3 space, \* [sc in next ch-3 sp, ch 3] twice, skip next ch-3 space, repeat from \* to last sc, dc in last sc, turn.

**Row 4:** Ch 1, sc in first dc, \* ch 3, skip next ch-3 space, (sc, ch 3, sc) twice in next ch-3 space; repeat from \* to end, ch 3, sc in 3rd of beginning ch-6 of previous row, turn.

Repeat Rows 3 and 4 only until piece measures 63½" (161 cm), ending after a Row 3.

### Ending Edging

**Next row (transition to edging, wrong side):** Ch 1, 2 sc in first dc, 3 sc in each ch-3 space to end, 2 sc in 3rd of beginning ch-6 of previous row, turn - 97 sc.

Work Rows 2-4 of Beginning Edging. Fasten off.

continued...

SHOP KIT



2015 - 2017  
**WOMEN'S CHOICE AWARD™**  
AMERICA'S MOST RECOMMENDED  
YARN BRAND

## FINISHING

Weave in all loose ends.

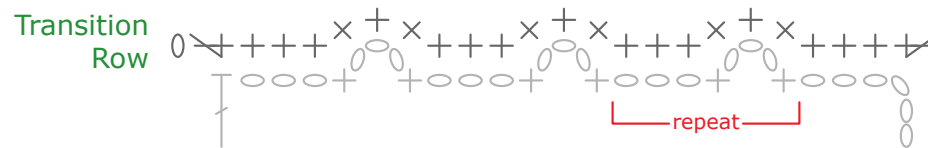
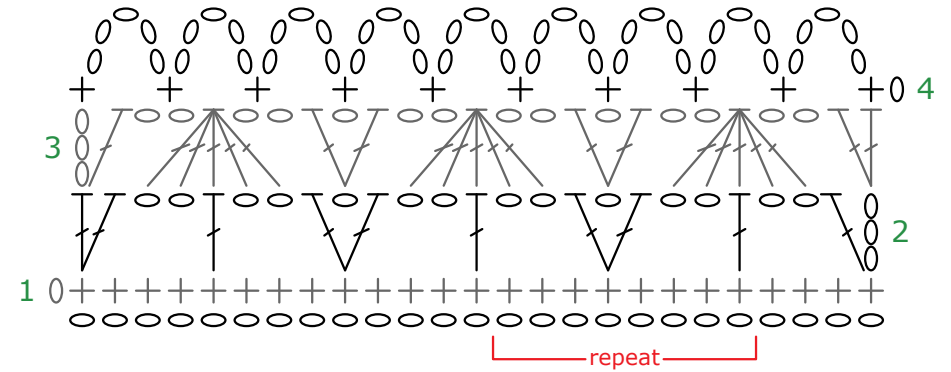
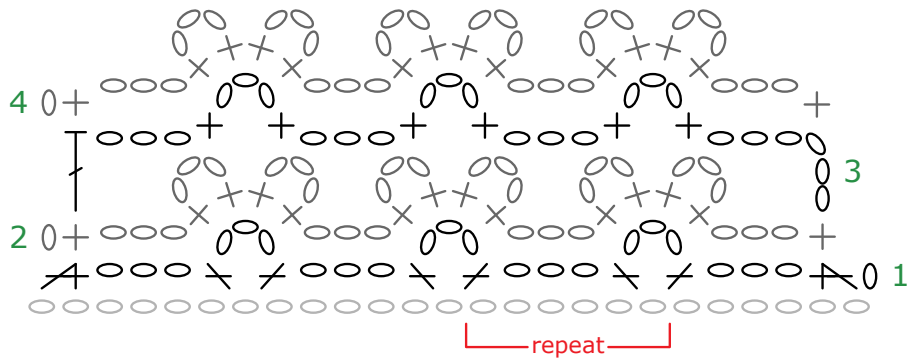
Lightly block to measurements.

## ABBREVIATIONS

**ch** = chain; **dc** = double crochet; **sc** = single crochet; **st(s)** = stitch(es); **yo** = yarn over; **[ ]** = work directions in brackets the number of times specified; **\* or \*\*** = repeat whatever follows the \* or \*\* as indicated.

*See next page for charts*





Symbol Key:

- ch
- + sc
- △ sc2tog
- ⌋ dc
- ⌋ dc5tog