



chic sheep 
Marly Bird™

Lafayette Chic Shawl

Using clusters and shells, this design takes the shawl to artistic heights. The pretty zigzag pattern is drapery enough to wear as a cozy scarf or elegant shawl.





crochet



Designed by Marly Bird

What you will need:

RED HEART® Chic Sheep™: 5 balls of 5687 VIP

Susan Bates® Crochet Hook: 5mm [US H-8]

Yarn needle

GAUGE: 1 stitch repeat = 4" (10 cm); 5 rows = 4.25" (11 cm). **CHECK YOUR GAUGE.** Use any size hook to obtain the gauge.

BUY YARN



RED HEART® Chic Sheep by Marly Bird™, Art. R170 100% Merino Wool available 3.5 oz (100 g), 186 yd (170 m) balls

Project measures 16" [40.5 cm] in width, 80" [203 cm] in length.

PATTERN NOTES

Beginning chain 2 does not count as a stitch throughout.

Special Stitches

2 Double Crochet Cluster (2 dc-cl):

[Yarn over hook, insert hook in indicated stitch and pull up a loop, yarn over and draw through 2 loops on hook] repeat once more in same st, yarn over and draw through all 3 loops on hook.

Shell: (2 dc-cl, ch 1, 2 dc-cl, ch 1, 2 dc-cl) in indicated stitch

Double Crochet 3 Together (dc3tog):

*Yarn over hook, insert hook in next indicated stitch and pull up a loop, yarn over and draw through 2 loops on hook**, skip next chain; repeat from * twice more ending at **, yarn over and draw through all 4 loops on hook.

PATTERN

Ch 67

Row 1 (RS): (Dc, ch 1, 2 dc-cl) in 3rd ch from hook (counts a first half shell), *[ch 1, skip 1 ch, dc in next ch] twice, ch 1, skip 1 ch, dc3tog over next 5 ch, [ch 1, skip 1 ch, dc in next ch] twice, ch 1, skip 1 ch**, shell in next ch; repeat from * across ending at **, (2 dc-cl, ch 1, 2 dc-cl) in last ch (half shell made). Turn- 3 shells + 2 half shells.

Row 2: Ch 2, (dc, ch 1, 2 dc-cl) in first dc-cl, *ch 1, skip ch-1 sp, dc in next dc-cl, ch 1, skip ch-1 sp, dc in next dc, ch 1, skip ch-1 sp, dc3tog over next 5 sts, ch 1, skip next ch-1 sp, dc in next dc, ch 1, skip next ch-1 sp, dc in next dc-cl, ch 1, skip next ch-1 sp**, shell in next dc-cl; rep from * across ending at **, (2 dc-cl, ch 1, 2 dc-cl) in last dc. Turn.

Rows 3 – 95: Repeat Row 2. Fasten off.

FINISHING

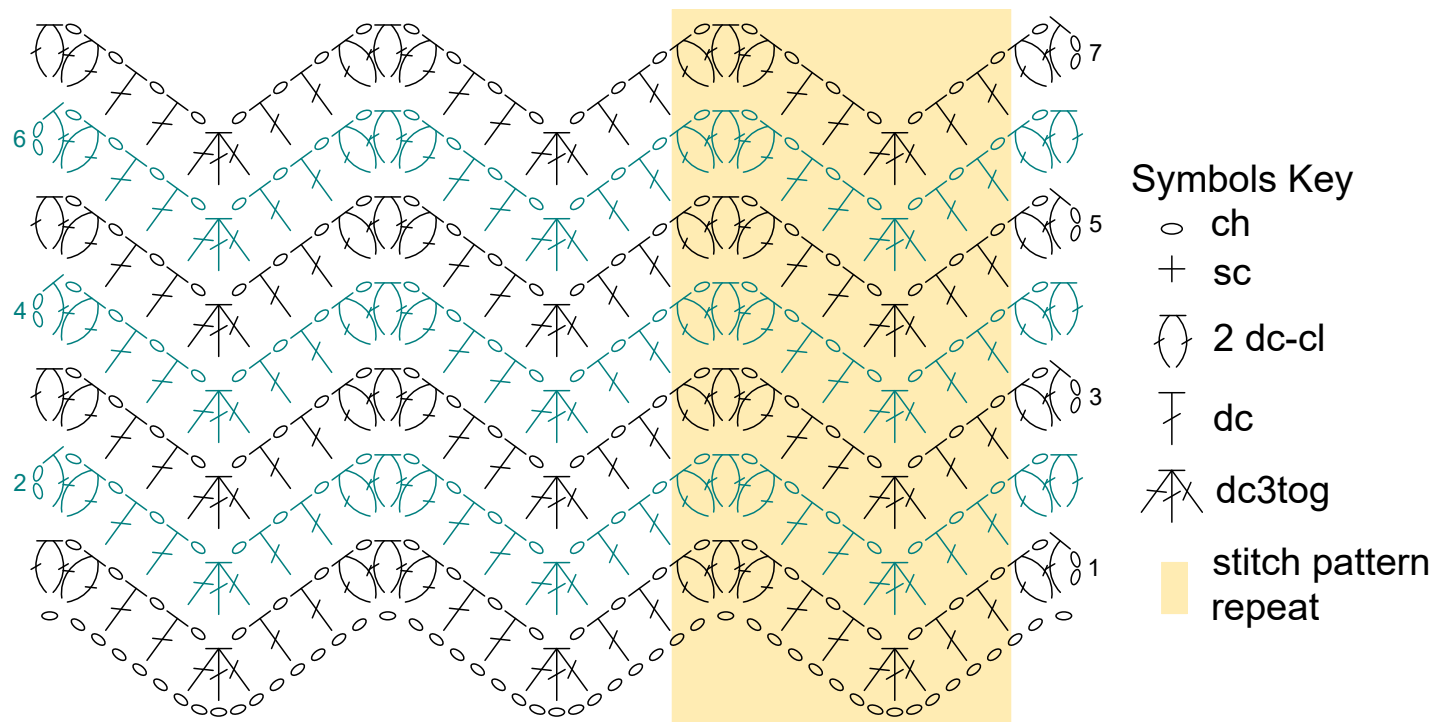
Weave in all loose ends. Pin to schematic size, spray with water to block. Allow to dry

ABBREVIATIONS

ch = chain; **ch-sp** = chain space; **st(s)** = stitch(es); **dc** = double crochet; **tch** = turning chain; **RS** = right side; **WS** = wrong side; **()** = work directions in parentheses in same st; **[]** = work directions in brackets the number of times specified; ***** = repeat whatever follows the * as indicated.

See next 2 pages for chart and alternate photos





La Fayette Chic Shawl Stitch Diagram



