



CROCHET | SKILL LEVEL: **EASY**

ABBREVIATIONS

Approx =

Approximately

Beg = Beginning

Ch = Chain(s)

Dc = Double crochet

Prev = Previous

Rep = Repeat

RS = Right side

Sl st = Slip stitch

St(s) = Stitch(es)

Tog = Together

WS = Wrong side

MEASUREMENTS

Approx 11 x 96" [28 x 244 cm],
excluding fringe.

GAUGE

10 dc and 5 rows = 4" [10 cm].

INSTRUCTIONS

Stripe Pat

With A, work 2 rows. With B, work
2 rows.

With C, work 2 rows.

These 6 rows form stripe pat

SCARF

With A, ch 50.

See diagram on page 2.

1st row: (RS). 1 dc in 4th ch from
hook. 1 dc in next ch. (Ch 3. Sl st
in next ch. Skip next 3 ch. 1 dc in
each of next 2 ch) twice. Skip next
2 ch. Sl st in next ch. Ch 3. 1 dc in
each of next 2 ch. Skip next 2 ch.
Sl st in next ch. Ch 3. 1 dc in each of
next 2 ch. Ch 3. Sl st in next ch. Skip
next 3 ch. 1 dc in each of next 2 ch.
Ch 3. Sl st in next ch. Skip next 3 ch.
(1 dc in each of next 2 ch. Skip next
2 ch. Sl st in next ch. Ch 3) twice.
1 dc in each of last 3 ch. Turn.

2nd row: Ch 3. 1 dc in each of next
2 dc. *(Ch 3. Sl st in top of next ch 3
from prev row. 1 dc in each of next
2 dc) twice. (Sl st in top of next ch 3
from prev row. Ch 3. 1 dc in each of
next 2 dc) twice. Rep from * once
more. 1 dc in top of next ch 3 from
prev row. Turn.

First 2 rows of Stripe Pat are now
in place.

MATERIALS

Red Heart® Super Saver® (7 oz/198 g; 364 yds/333 m)

Contrast A Pretty in Pink (0722) **1 ball or 185 yds/169 m**

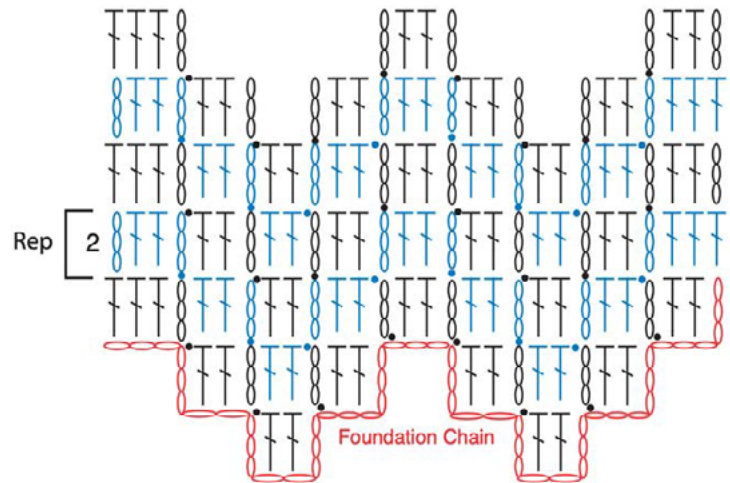
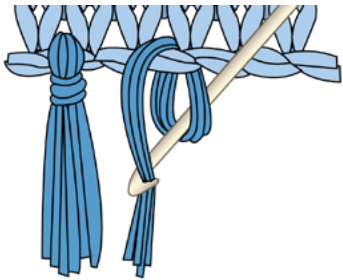
Contrast B Dusty Gray (0340) **1 ball or 160 yds/146 m**

Contrast C Charcoal (3950) **1 ball or 155 yds/142 m**

Size U.S. J/10 (6 mm) Susan Bates® Silvalume® crochet hook **or size
needed to obtain gauge.** Susan Bates® yarn needle.

Keeping cont of Stripe Pat, rep last row until Scarf measures approx 96" [244 cm], ending after 2nd row of Stripe Pat. Fasten off.

Fringe: Cut lengths of A 20" [51 cm] long. Taking 2 strands tog, knot into fringe into each st at both ends of Scarf. Trim fringe evenly.



STITCH KEY

- = chain (ch)
- = slip st (sl st)
- ┆ = double crochet (dc)

