



CROCHET | SKILL LEVEL: EASY

ABBREVIATIONS

Approx =	Dc = Double crochet	Sl st = Slip stitch
Approximately	Rem = Remaining	Sp(s) = Space(s)
Beg = Beginning	Rep = Repeat	WS = Wrong side
Ch = Chain(s)	RS = Right side	
Cont = Continue(ity)	Sc = Single crochet	

MEASUREMENTS

Approx 10" x 80" [25.5 x 203.5 cm]

GAUGE

11 dc and 5 rows = 4" [10 cm]

INSTRUCTIONS

Notes:

- To change color, work to last 2 loops on hook and draw new color through last 2 loops, then proceed in new color.
- Scarf is reversible, there is no RS or WS.

SCARF

With A, ch 6. See diagram on page 2.

1st row: (RS). 1 dc in 4th ch from hook. 1 dc in each of next 2 ch. Turn. 1 block made.

2nd row: Ch 6. 1 dc in 4th ch from hook. 1 dc in each of next 2 ch – beg block made. (Sl st. Ch 3. 3 dc) in next ch-3 sp – block made. Turn. 2 blocks.

3rd row: Beg block. (Block in next ch-3 sp) twice. Turn. 3 blocks.

4th row: Beg block. (Block in next ch-3 sp) 3 times. Turn. 4 blocks.

5th row: Beg block. (Block in next ch-3 sp) 4 times. Turn. 5 blocks.

6th row: Beg block. (Block in next ch-3 sp) 5 times. Turn. 6 blocks.

7th row: Beg block. (Block in next ch-3 sp) 6 times. Turn. 7 blocks.

Cont in this manner, increasing 1 block each row until there are 10 blocks (10 rows are complete). Work sides even as follows:

MATERIALS

Red Heart® Super Saver® Brushed™ (5 oz/141 g; 253 yds/231 m)

Contrast A Dusty Pink (5071) **1 ball**

Contrast B Soft Mink (5030) **1 ball**

Contrast C Cream (0510) **1 ball**

Contrast D Clay (5092) **1 ball**

Size U.S. J/10 (6 mm) Susan Bates® Silvalume® crochet hook **or size needed to obtain gauge.**

****1st row:** (RS). With A, beg block. (Block in next ch-3 sp) 9 times. Sl st in last ch-3 sp (**do not** make a block). Turn. 10 blocks.

2nd row: Sl st in each of first 3 dc and next ch-3 sp. Block in same ch-3 sp as last sl st. (Block in next ch-3 sp) 10 times. Turn. 10 blocks.

Rep last 2 rows until work down longer side edge measures 10" [25.5 cm], ending on a WS row.

Break A. Join B.

With B, rep last 2 rows for a further 10" [25.5 cm], ending on a WS row.

Break B. Join C.

With C, rep last 2 rows for a further 10" [25.5 cm], ending on a WS row.

Break C. Join D.

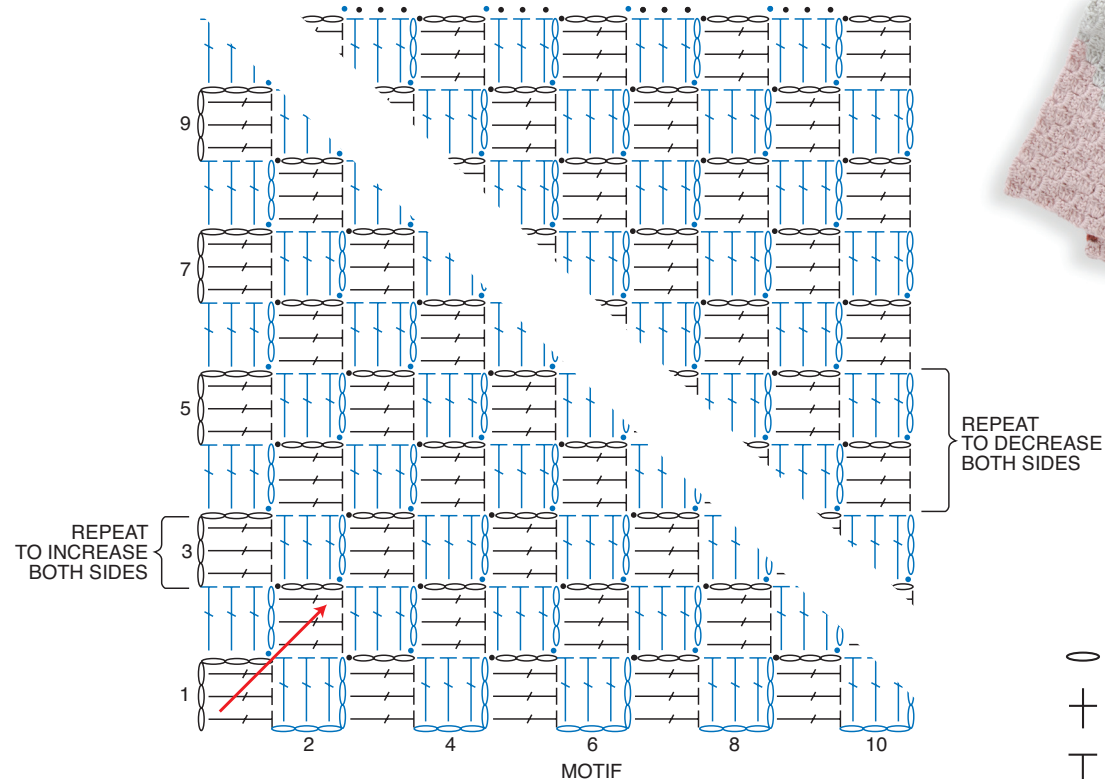
With D, rep last 2 rows for a further 10" [25.5 cm], ending on a WS row.** Break D. Join A.

Rep from ** to ** once more. Break D at end of last rep.

Beg decreasing each side as follows:

1st row: (RS). Skip first 3 dc. Join A with sl st to next ch-3 sp. Beg block in same ch-3 sp as sl st. *Block in next ch-3 sp. Rep from * to last ch-3 sp. Sl st in last ch-3 sp (**do not** make a block). Turn.

2nd row: Sl st across first 3 dc. Sl st in next ch-3 sp. Beg block in same ch-3 sp as sl st. *Block in next ch-3 sp. Rep from * to last ch-3 sp. Sl st in last ch-3 sp (**do not** make a block). Turn.
Rep last row until 1 block rem. Fasten off.



STITCH KEY
 ○ = chain (ch)
 + = single crochet (sc)
 T = double crochet (dc)