



CROCHET | SKILL LEVEL: EASY

ABBREVIATIONS

Approx =	Hdc = Half double	Sc = Single crochet
Approximately	crochet	Sl st = Slip stitch
Beg = Beginning	Pat = Pattern	Sp(s) = Space(s)
Ch = Chain(s)	Rem = Remaining	St(s) = Stitch(es)
Dc = Double crochet	Rep = Repeat	WS = Wrong side
	RS = Right side	

MEASUREMENTS

Approx 9" x 71" [23 x 181 cm], excluding pompoms.

GAUGE

11 sc and 14 rows = 4" [10 cm]

INSTRUCTIONS

Notes:

- Scarf is worked lengthwise in 2 Halves. After First Half is completed, Second Half is worked along foundation chain of First Half.
- Ch 3 at beg of row counts as dc.

Ch 200 loosely.

See diagram on page 2.

First Half: 1st row: (RS). 1 sc in 2nd ch from hook. *Skip next 2 ch. 5 dc in next ch. Skip next 2 ch. 1 sc in next ch. Rep from * to end of row. Turn. 33 groups of 5-dc.

****2nd row:** Ch 3. 2 dc in first sc. *Skip next 2 dc. 1 sc in next dc. Skip next 2 dc. 5 dc in next sc. Rep from * to last 5 dc. Skip next 2 dc. 1 sc in next dc. Skip next 2 dc. 3 dc in last sc. Turn.

3rd row: Ch 1. 1 sc in first dc. *Skip next 2 dc. 5 dc in next sc. Skip next 2 dc. 1 sc in next dc. Rep from * to last sc and 3 dc. Skip next 2 dc. 5 dc in next sc. Skip next 2 dc. 1 sc in last dc. Turn.

Rep 2nd and 3rd rows for Shell St Pat until work from beg measures approx 4½" [11.5 cm], ending on a 3rd row. Fasten off.**

MATERIALS

Red Heart® Super Saver® Ombre™ (10 oz/283 g; 482 yds/440 m)

Sea Coral (3967)

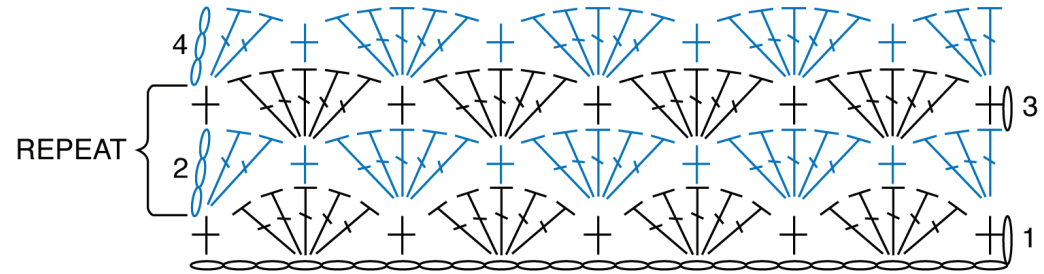
2 balls

Size U.S. J/10 (6 mm) crochet hook **or size needed to obtain gauge.**
Yarn needle.

Second Half: With RS facing, join yarn with sl st to first rem loop of foundation ch of First Half.

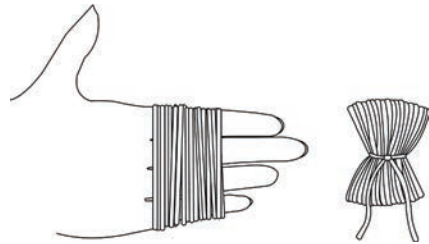
1st row: (RS). Ch 1. 1 sc in same sp as sl st. *Skip next 2 ch. 5 dc in next ch. Skip next 2 ch. 1 sc in next ch. Rep from * to end of row. Turn. 33 groups of 5-dc.

Rep from ** to ** as given for First Half.






Pompom (make 2)

Wind yarn around 4 fingers 120 times. Tie tightly in the middle and leave a long end for attaching to Scarf. Cut loops at both ends and trim to smooth round shape. Gather ends of Scarf. Sew securely to each end of Scarf.



STITCH KEY

-  = chain (ch)
-  = single crochet (sc)
-  = double crochet (dc)

