



CROCHET
SKILL LEVEL
INTERMEDIATE

Designed by Katherine Eng

What you will need:

RED HEART® Shimmer®: 1 ball
1715 Hot Pink

Susan Bates® Crochet Hook:
3.50 mm [US E-4] and 3.75 mm
[US F-5]

Yarn needle

GAUGE: 20 sts and 8 Rows in
pattern = 4" (10 cm). **CHECK**
YOUR GAUGE. Use any size hook
to obtain the gauge given.



RED HEART®
Shimmer® Art. E763
available in 3.5 oz
(100 g), 280 yd (256 m) and
multicolor 3 oz (85 g), 240 yd
(220 m) balls



Shimmery Hearts Scarf

*For Valentine's Day or any day of the year,
this scarf is perfect for all ages. Crocheted in
filet crochet, we spell out the first two rows
to get your started and then you continue by
following the chart.*

Scarf measures 5½" (14 cm) wide x 57"
(145 cm) long

Special Abbreviations

space: Ch 2, skip next 2 sts, dc in next dc

block: Dc in next 2 dc or 2 dc in next ch-2
space, dc in next dc

picot: Ch 2, sc in top of last dc made

SCARF

FIRST SIDE

With larger hook, ch 24, loosely.

Row 1: Working in back loops of ch st, dc
in 4th ch from hook and in each ch across,
turn—22 dc; 7 blocks made—Row 1 of Chart
complete.

Row 2: Ch 3 (counts as dc here and
throughout), dc in next next 3 dc (block
made), [ch 2, skip 2 sts, dc in next dc] twice
(2 spaces made), dc in next 3 sts [ch 2, skip
2 sts, dc in next dc] twice (2 spaces made),
dc in last 3 sts (block made), turn—Row 2 of
Chart complete.

Rows 3-53: Work in blocks and spaces
following Chart on next page. Fasten off at end
of last row.

SECOND SIDE

Row 1: With right side facing, join yarn in first
ch on opposite side of foundation ch, ch 3
(counts as dc), dc in each ch across—22 dc; 7
blocks made—Row 1 of Chart complete.

Rows 2-53: work same as First Side, following
Chart. Do not fasten off.

BORDER

Change to smaller hook.

Rnd 1: Ch 1, working across side edge of
scarf, *(sc, ch 2, sc) in each row-end st across
to next corner; working across short end, (sc,
ch 2, sc) in next dc, skip next dc, (sc, ch 3, sc)
in next dc, skip next dc, (sc, ch 4, sc) in next
dc, skip next dc, (sc, ch 5, sc) in next dc, skip

next dc, sc in next dc, (hdc, dc, picot) in next
dc, (dc and hdc) in next dc, sc in next dc, skip
next dc, (sc, ch 5, sc) in next dc, skip next dc,
(sc, ch 4, sc) in next dc, skip next dc, (sc, ch
3, sc) in next dc, skip next dc, (sc, ch 2, sc) in
next dc; repeat from * around; join with a slip
st in first sc. Fasten off.

Weave in ends.

ABBREVIATIONS

ch = chain; **dc** = double crochet; **hdc** = half
double crochet; **sc** = single crochet; **sl st** =
slip st; **sp(s)** = space(es); **st(s)** = stitch(es); ()
= work directions in parentheses into same st;
[] = work directions in brackets the number
of times specified; * = repeat whatever
follows the * as indicated.

See next page for Chart

SHOP KIT

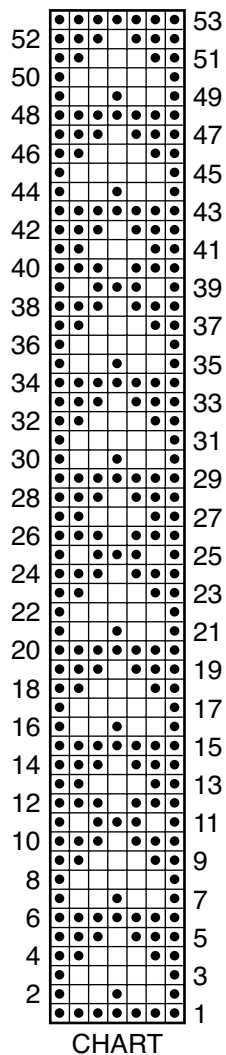


CHART KEY

□ = ch 2, skip 2 sts, dc in next dc

● = dc in next 2 dc or 2 dc in next ch-2 space, dc in next dc