



CROCHET  
SKILL LEVEL  
EASY

Designed by Kathy Wigington

## What you will need:

RED HEART® Boutique Midnight®:  
2 balls of 1943 Brocade

Susan Bates® Crochet Hook:  
4.5mm [US G-7]

Yarn needle

**GAUGE:** 4 blocks = 4" (10 cm); 6 rows = 5" (12.5) measured across long edge. **CHECK YOUR GAUGE.** Use any size hook to obtain the gauge.



RED HEART® Boutique Midnight®, Art. E786, Available in 2.5 oz (70g), 153 yd (140m) balls



# Diagonal Scarf

*This interesting diagonal stitch pattern reveals the beautiful shadings of this elegant yarn. Crochet it for a gift she'll love...or make it for yourself and enjoy!*

Scarf measures 6" x 60" (15 x 152.5 cm) not including fringe.

## Special Stitches

**block** = (Slip st, ch 3, 3 dc) in indicated ch-3 space.

**beg block** (beginning block) = Ch 6, dc in 4th ch from hook (3 skipped chains count as first ch-3 space), dc in next 2 ch.

## Note

Scarf is made in turned rows worked on the diagonal.

## SCARF

Ch 6.

**Row 1 (right side):** Dc in 4th ch from hook and in next 2 ch, turn—1 block.

**Row 2:** Beg block, block in next ch-3 space (beginning ch-3 space of previous row), turn—2 blocks.

**Rows 3–7:** Beg block, block in ch-3 space of each block across, turn—7 blocks.

**Row 8:** Beg block, block in ch-3 space of next 6 blocks, slip st in ch-3 space of last block, turn.

**Row 9:** Ch 1, slip st in first 3 dc, block in ch-3 space of each block across, turn.

**Rows 10–69:** Repeat Rows 8 and 9 thirty times.

**Rows 70–75:** Ch 1, slip st in first 3 dc, block in ch-3 space of each block to last block, slip st in ch-3 space last block, turn—1 block. Fasten off.

## Fringe

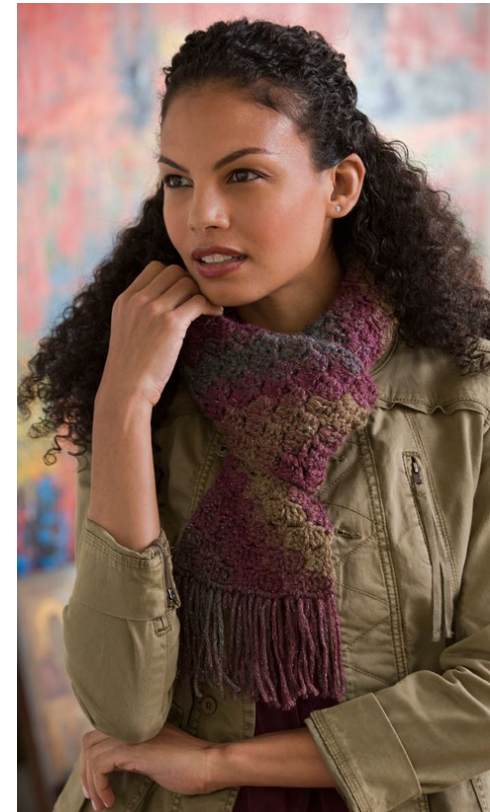
Cut 42 strands, each 9" (23 cm) long. Fold each strand in half to form a loop. Insert crochet hook from right side through edge of scarf. Place fold on hook and draw fold through, forming a loop. Thread ends of strands through loop and pull to tighten. Repeat to attach 21 strands evenly across each short edge of scarf. Trim ends evenly.

## FINISHING

Weave in ends.

## ABBREVIATIONS

**ch** = chain; **dc** = double crochet; **hdc** = half double crochet; **st(s)** = stitch(es); **( )** = work directions in parentheses into same st.



SHOP KIT