



Child 6-10 yrs



Adult Small



Adult Medium



CROCHET | SKILL LEVEL: INTERMEDIATE

ABBREVIATIONS

Beg = Beginning
Ch = Chain(s)
Rem = Remaining
Rep = Repeat
Rnd(s) = Round(s)
RS = Right side

Sc = Single crochet
Sl st = Slip stitch
St(s) = Stitch(es)
Tog = Together
WS = Wrong side

MATERIALS

Red Heart® Super Saver® (Solids: 7 oz/198 g; 364 yds/333 m; Heathers: 5 oz/141 g; 236 yds/215 m)

| Sizes | Child | Adult Small | Adult Medium | |
|--|-------|-------------|--------------|------|
| Main Color (MC) Dusty Grey (0340) | 1 | 1 | 1 | ball |
| Contrast A Gold (0321) or Burgundy (0376) or Med Thyme (0406) | 1 | 1 | 1 | ball |
| Contrast B Soft White (0316) | 1 | 1 | 1 | ball |
| Contrast C Grey Heather (0400) | 1 | 1 | 1 | ball |

Size U.S. H/8 (5 mm) crochet hook **or size needed to obtain gauge.**

SIZES

To fit head measurement

Child 6-10 yrs 20" [51 cm]

Adult Small 22" [56 cm]

Adult Medium 23½" [59.5 cm]

GAUGE

13 sc and 14 rows = 4" [10 cm].

INSTRUCTIONS

The instructions are written for smallest size. If changes are necessary for larger sizes the instructions will be written thus (.). Numbers for each size are shown in the same color throughout the pattern. When only one number is given in black, it applies to all sizes.

Notes:

- When working from chart, carry color not in use loosely across top of row and work sts around it.
- Change colors by drawing new color through last 2 loops on hook and proceed with new color, keeping color change to WS of work.
- Hat is worked in rnds, but you will turn at the end of each rnd to alternate RS and WS to keep pattern repeat even.
- Join all rnds with sl st to first sc.

Ribbing: With MC, ch 7 (8-8).

1st row: 1 sc in 2nd ch from hook and in each ch to end of chain. Turn. 6 (7-7) sc.

2nd row: Ch 1. Working in back loops only, 1 sc in each sc to end of row. Turn.

Rep last row **63 (71-75)** times more.

Joining row: Ch 1. With first and last rows tog, working through both thicknesses, sl st in each st to end of row. **Do not** turn.

1st rnd: (RS). With MC, working across long side of Ribbing, ch 1. Work **64 (72-76)** sc evenly around. Join. **Turn.**

2nd rnd: (WS). Ch 1. 1 sc in each sc around. Join. Turn.

3rd to 19th rnds: Work Chart to end of chart **turning** at end of each rnd, noting 4-st rep will be worked **16 (18-19)** times. Break A, B and C.

Next rnd: With MC, ch 1. 1 sc in each sc around. Join. **Turn.**

Rep last rnd until Hat from lower edge measures **7½ (8-8½)" [19 (20.5-21.5) cm]**, ending on a WS rnd.

Shape top: 1st rnd: (RS). Ch 1. 1 sc in each of first **3 (5-1)** sc. *Sc2tog. 1 sc in each of next **6 (10-10)** sc. Rep from * to last **5 (7-3)** sc. Sc2tog. 1 sc in each of last **3 (5-3)** sc. Join. Turn. **56 (66-69)** sc.

2nd rnd: (WS). Ch 1. 1 sc in each sc around. Join. Turn.

3rd rnd: (RS). Ch 1. 1 sc in each of first 2 sc. *Sc2tog. 1 sc in each of next **5 (4-4)** sc. Rep from * to last **5 (4-7)** sc. Sc2tog. 1 sc in each of last **3 (2-5)** sc. Join. Turn. **48 (55-58)** sc.

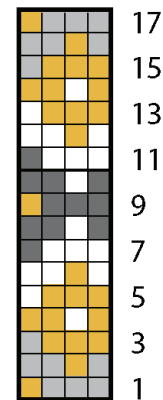
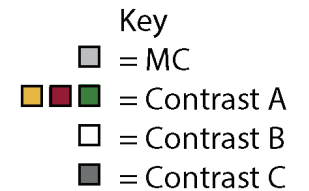
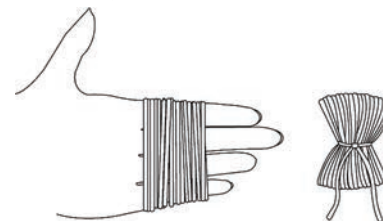
4th rnd: As 2nd rnd.

5th rnd: (RS). Ch 1. 1 sc in first sc. *Sc2tog. 1 sc in each of next **4 (3-3)** sc. Rep from * to last **5 (4-2)** sc. Sc2tog. 1 sc in each of last **3 (2-0)** sc. Join. Turn. **40 (44-46)** sc.

6th rnd: As 2nd rnd.

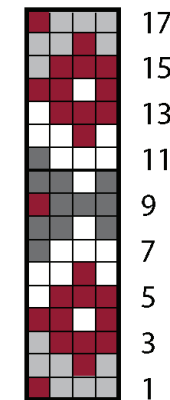
7th rnd: (RS). Ch 1. *Sc2tog. Rep from * around. Join. **20 (22-23)** sc. Fasten off leaving a long end. Weave end tightly through rem sts and fasten securely.

Pom-pom: Wind A around 4 fingers 100 times. Tie tightly in the middle and leave a long end for attaching to Hat. Cut loops at both ends and trim to smooth round shape. Sew securely to top of Hat.



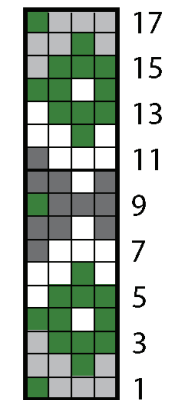
4-st rep

(Child)



4-st rep

(S - Adult)



4-st rep

(M-Adult)