



Scandinavian Hat

Designed by Michelle Maks.

Hat fits 21½ (22½, 23½)" circumference head.

RED HEART® "Soft Yarn®": 2 balls 4614 Black **MC**, 1 ball each 4600 White **A** and 5142 Cherry Red **B**.

Crochet Hooks: 5mm [US H-8] and 5.5mm [US I-9].
Yarn needle.

GAUGE: 16 sts = 4"; 23 rows = 5" in sc with larger hook.
CHECK YOUR GAUGE. Use any size hook to obtain the gauge.

Special Abbreviation

dec (worked over 2 sts) = [draw up a loop in next st] twice, yo and draw through all 3 loops on hook.

HAT

With larger hook and **MC**, ch 88 (92, 96).

Row 1 (RS): Sc in 2nd ch from hook, sc in each ch across; turn – 87 (91, 95) sc.

Row 2: Ch 1, sc in each sc across; turn.

Repeat Row 2 until 20 (25, 30) rows have been completed from beginning.

Shape Top-Next Row: Ch 1, sc in first sc, [dec] 43 (45, 47) times; turn – 44 (46, 48) sc.

Next Row: Ch 1, sc in each sc across; turn.

Next Row: Ch 1, [dec] 22 (23, 24) times; turn – 22 (23, 24) sc.

Next Row: Ch 1, sc in each sc across; turn.

Next Row: Ch 1, sc in first 0 (1, 0) sc, [dec] 11 (11, 12) times; turn – 11 (12, 12) sc.

Next Row: Ch 1, sc in each sc across. Fasten off, leaving a long length for sewing.

Border

Row 1: With right side facing and smaller hook, join **B** in first st on lower edge; ch 1, sc in each st across foundation ch edge of Hat; turn – 87 (91, 95) sc.

Row 2: Ch 1, sc in each sc across; turn. Fasten off **B**.

Row 3: Join **MC** in first sc; ch 1, sc in each sc across; turn.

Rows 4-9: Ch 1, sc in each sc across; turn. Fasten off at end of last row.

Lining

With smaller hook and **B**, ch 88 (92, 96).

Row 1: Sc in 2nd ch from hook, sc in each ch across; turn – 87 (91, 95) sc.

Rows 2-9: Ch 1 sc in each sc across; turn. Do NOT fasten off.

Join Lining: Hold Lining and Border together with wrong sides facing, aligning sts in Row 9. With right side of Border facing, smaller hook and **B**, sc in each sc across working through the double thickness of Row 9; turn.

Next Row: Ch 1, sc in each sc across. Fasten off.



SCANDINAVIAN HAT | CROCHET

Embroidery

Starting in center st and working outward, cross st Rows 3-9 of Border following *Chart A*. Starting in center st and working outward, cross st Rows 3-20 of Hat following *Chart B*.

Finishing

Fold Lining to wrong side of Hat and sew foundation chain edge of Lining to corresponding row on inside of Hat Border with **B**. With yarn needle, weave sewing length at top of Hat through last row of sts; draw up firmly, fasten securely. Sew back seam of Hat. Sew edges of Lining separately on inside. With **B**, make a loose 6" pompom and attach securely to center top of Hat.



RED HEART® "Soft Yarn®"

Art. E728 available in solid 5 oz (140 g), 256 yd (234 m); Print 4 oz (113 g), 204 yd (187 m) balls.

ABBREVIATIONS: **A, B** = color A, B; **ch** = chain;
dec = decrease; **MC** = main color; **mm** = millimeters;
sc = single crochet; **st(s)** = stitch(es); **yo** = yarn over;
[] = work directions in brackets the number of times specified.

CHART A

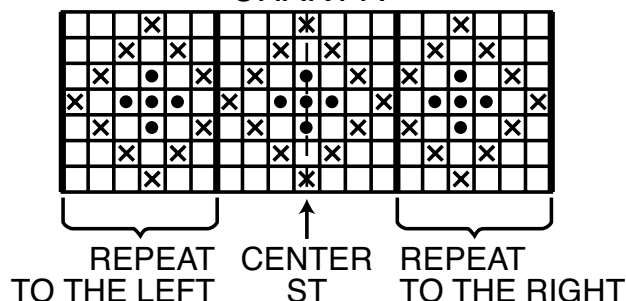


CHART B

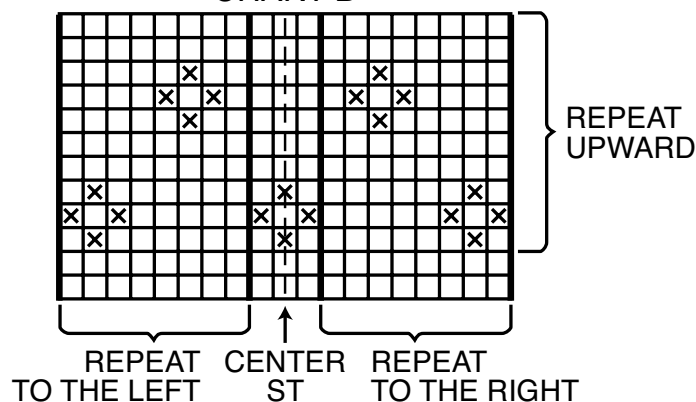




CHART KEY

-  = cross st in A
-  = cross st in B