



CROCHET | SKILL LEVEL: **INTERMEDIATE**

ABBREVIATIONS

Approx = Approximately

Beg = Beginning

Ch = Chain(s)

Dc = Double crochet

Dcbp = Yoh and draw up a loop around post of next st at back of work inserting hook from right to left. (Yoh and draw through 2 loops on hook) twice

Dcfp = Yoh and draw up a loop around post of next st at front of work inserting hook from right to left. (Yoh and draw through 2 loops on hook) twice

Pat = Pattern

Puff St = (Yoh and draw up a long loop in indicated stitch) 3 times. Yoh and draw through all loops on hook. Ch 1 tightly to close.

Rep = Repeat

RS = Right side

Sc = Single crochet

Sl st = Slip stitch

St(s) = Stitch(es)

Tog = Together

WS = Wrong side

Yoh = Yarn over hook

MEASUREMENTS

Approx 24" [61 cm] circumference x 12" [30.5 cm] tall.

GAUGE

14 sts and 7 rows = 4" [10 cm] in Pat.
13 sc and 14 rows = 4" [10 cm].

INSTRUCTIONS

Note: Cowl is worked sideways.

See diagram on page 2.
With A, ch 37.

1st row: (RS). Puff st in 6th ch from hook (skipped ch-5 counts as 1 dc and 2 ch). Working **behind** Puff st just made, 1 dc in 2nd ch to **right** of last Puff st. 1 dc in next ch to **left** of last dc. *Skip last Puff st and next 2 ch. Puff st in next ch. Working **behind** Puff st just made, 1 dc in 2nd ch to **right** of last Puff st. 1 dc in next ch to **left** of last dc. Rep from * to last ch. 1 dc in last ch. 35 sts. Turn.

MATERIALS

RedHeart™ Heat Wave™ Prints (3.5 oz/100 g; 164 yds/150 m)

Contrast A Water Park (3678)

3 balls

RedHeart™ Heat Wave™ (3.5 oz/100 g; 198 yds/181 m)

Contrast B Radio (0420)

1 ball

Size U.S. H/8 (5 mm) crochet hook **or size needed to obtain gauge.**

RED HEART PUFF STITCH CROCHET COWL

2nd row: Ch 3 (counts as dc). *Skip next 2 dc. Puff st in next Puff st. Working in **front** of Puff st just made, 1 dc in 2nd dc to **right** of last Puff st. 1 dc in next dc to **left** of last dc. Rep from * to last dc. 1 dc in last dc. Turn.

3rd row: Ch 3 (counts as dc). *Skip next 2 dc. Puff st in next Puff st. Working **behind** Puff st just made, 1 dc in 2nd dc to **right** of last Puff st. 1 dc in next dc to **left** of last dc. Rep from * to last dc. 1 dc in last dc. Turn.

Rep last 2 rows for Pat until work from beg measures 24" [61 cm] ending on a WS row. Fasten off.

Sew last row and foundation row tog to form Cowl.

Edging: With RS of Cowl facing and beg at seam, join B with sl st at top of Cowl.

1st rnd: Ch 1. Work 78 sc evenly around top of Cowl. Join with sl st to first sc.

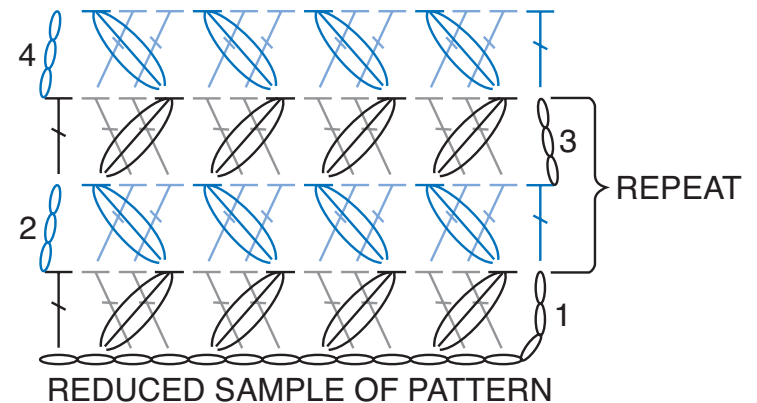
2nd rnd: Ch 3 (count as dc). 1 dc in each sc around. Join with sl st to top of ch-3.

3rd rnd: Ch 2 (**does not** count as st). 1 dcfp around first dc. 1 dcbp around next dc. *1 dcfp around next dc. 1 dcbp around next dc.

Rep from * around. Join with sl st to first st.

4th rnd: Ch 2 (**does not** count as st). 1 dcfp around first dcfp. 1 dcbp around next dcbp. *1 dcfp around next dcfp. 1 dcbp around next dcbp. Rep from * around. Join with sl st to first st. Fasten off.

Rep for Bottom edge of Cowl.



STITCH KEY

○ = chain (ch)

┆ = double crochet (dc)

⊖ = puff stitch (puff st)