



CROCHET
SKILL LEVEL
EASY



Marly's Perfect Simple Cowl Poncho

Have fun learning new pattern stitches and techniques as you crochet the perfect poncho that flatters all body types. This version has a simple cowl neckline and dreadlock fringe around the lower edge.

What you will need:

RED HEART® Unforgettable®:
6 (7) balls 3952 Tealberry

Susan Bates® Crochet Hook:
5mm [US H-8]

Susan Bates® split lock stitch markers, Susan Bates® mini knit clips (optional), yarn needle

GAUGE: 16 sts (2 repeats) = 4.5" (11.5 cm) in Raised Chevron; 12 sts (1 repeat) = 3" (7.5 cm) in Loopy Stitch.
CHECK YOUR GAUGE. Use any size needles to obtain the gauge.



RED HEART® Unforgettable®,
Art. E793, available in 3.5 oz (100 g), 270 yd (247 m) balls.

SHOP KIT

Directions are for size S-M; changes for size L-2X are in parentheses.

Each rectangle piece measures 12¼ x 27 (21¼ x 36)" (31 x 68.5 (54 x 91.4) cm).

Finished Poncho measures 30 (40)" (76 (101.6) cm) across at widest point and 24¾ (34¾)" (63 (88) cm) in length when laid flat, not including neck or bottom edgings.

SPECIAL STITCHES

Bpdc = Back post double crochet: Yo, insert hook from the back of the work to front and to back again around the post of indicated st, yo and pull up a loop (3 loops on hook), [yo and draw through 2 loops] twice.

Fpdc = Front post double crochet: Yo, insert hook from the front of the work to back and to front again around the post of indicated st, yo and pull up a loop (3 loops on hook), [yo and draw through 2 loops] twice.

Bpdc2tog = Back post double crochet 2 together: * Yo, insert hook from the back of the work to front and to back again around the post of indicated st, yo and pull up a loop (3 loops on hook), yo and draw through 2 loops; repeat from * once more, yo and draw through all 3 loops on hook.

Fpdc2tog = Front post double crochet 2 together: * Yo, insert hook from the front of the work to back and to front again around the post of indicated st, yo and pull up a loop (3 loops on hook), yo and draw through 2 loops; repeat from * once more, yo and draw through all 3 loops on hook.

Sc2tog = Single crochet 2 together: [Pull up a loop in next st] twice, yo and draw through all 3 loops on hook.

Dc2tog = Double crochet 2 together: [Yo, pull up a loop in next st, yo and draw through 2 loops] twice, yo and draw through all loops on hook.

Hdc2tog = Half double crochet 2 together: [Yo, pull up a loop in next st] twice, yo and draw through all loops on hook.

MD = Make Dreadlock: Pull up a loop in next st, and loosen it to make it 8" (20.5 cm) long, or twice as long as desired finished dreadlock. Twist loop clockwise until it is very tight, then allow it to fold onto itself at the center, placing the end of the loop back onto the hook. Insert hook back into the same st just used, yarn over and draw through all loops on hook - dreadlock locked in place. When all are finished, pull on the ends of the dreadlocks to straighten them if necessary.

Tacking sc = Pull up a loop in next st as for a regular sc, insert hook into ch-10 loop at edge of piece, yo and draw through all loops on hook.



FIRST RECTANGLE RAISED CHEVRON PIECE

Ch 45 (77).

Row 1 (wrong side): Dc in the 3rd ch from hook (2 skipped sts do not count as a st), dc in each ch to the end, turn - 43 (75) dc.

continued...



2015 & 2016
WOMEN'S CHOICE AWARD™
AMERICA'S MOST RECOMMENDED
YARN BRAND



Row 2: Ch 2, dc in each of first 3 sts, * dc in next st, skip next st, fpdc around next dc, dc in top of same dc just used, fpdc around same dc again, skip next st, dc in each of next 4 sts; repeat from * to end, turn – 5 (9) pattern repeats.

Row 3: Ch 2, dc in each of first 3 sts, * skip next st, bpdC around next fpdc, dc in top of same fpdc just used, dc in next st, dc in top of next fpdc, bpdC around same fpdc just used, skip next st, dc each of next 3 sts; repeat from * to end, turn.

Row 4: Ch 2, dc in each of first 2 sts, * skip next st, fpdc around next bpdC, dc in top of same bpdC just used, dc in each of next 3 dc, dc in top of next bpdC, fpdc around same bpdC just used, skip next st, dc in next st; repeat from * to last st, dc in last st, turn.

Row 5: Ch 2, dc in first st, skip next dc, bpdC around fpdc, dc in top of same fpdc just used, * dc in each of next 5 sts, dc in top of next fpdc, bpdC2tog over same fpdc just used and next fpdc skipping the center dc between the 2 fpdc, dc in top of same fpdc just used, repeat from * to last 8 sts, dc in each of next 5 sts, dc in top of fpdc, bpdC around same fpdc just used, skip next st, dc in last st, turn.

Repeat rows 2 - 5 only until piece measures 26½ (35½)" (67.5 (90 cm) cm).

Last row: Ch 2, dc in each st to end. Fasten off.



SECOND RECTANGLE LOOPY STITCH PIECE

Ch 49 (85).

Row 1 (setup row, wrong side): 2 sc in 2nd ch from hook, sc in each of next 3 ch, [sc2tog over next 2 sts] twice, * sc in each of next 3 ch, 2 sc in each of next 2 ch, sc in each of next 3 ch, [sc2tog over next 2 sts] twice; repeat from * to last 4 ch, sc in each of next 3 ch, 2 sc in last ch, turn – 48 (84) sts, 4 (7) repeats.

Row 2 (right side): Ch 3 (counts as 1 dc), dc in first st, dc in each of next 3 sts, [dc2tog over next 2 sts] twice * dc in each of next 3 sts, 2 dc in next st, ch 10, 2 dc in next st, dc in each of next 3 sts, [dc2tog over next 2 sts] twice; repeat from * to last 4 sts, dc in each of next 3 sts, 2 dc in last st, turn.

Row 3: Ch 1, 2 sc in first st, sc in each of next 3 st, sc2tog over next 2 sts, ch 10, sc2tog over next 2 sts, * sc in each of next 3 sts, 2 sc in each of next 2 sts, sc in each of next 3 st, sc2tog over next 2 sts, ch 10, sc2tog over next 2 sts; repeat from * to last 4 sts, sc in each of next 3 sts, 2 sc in last st, turn.

Repeat rows 2 and 3 only until piece measures 26 (35)" (66 (89) cm), ending with a Row 3.

Next row (right side): Ch 3 (counts as 1 dc), dc in first st, dc in each of next 3 sts, [dc2tog over next 2 sts] twice * dc in each of next 3 sts, 2 dc in each of next 2 sts, dc in each of next 3 sts, [dc2tog over next 2 sts] twice; repeat from * to last 4 sts, dc in each of next 3 sts, 2 dc in last st, turn.

Do not fasten off.

Make sure all loops show on RS. Just push through the fabric if need be to get all of them on the RS.

Braid first column of loops by pulling one loop through the next working from top of piece downward. Use a marker to temporarily hold down final loop. Braid second column working from the bottom upward. Continue alternating directions in this manner, working each column of loops in the direction of the corresponding chevron "arrow". So, braid upward for the chevron peaks, and downward for the chevron valleys.

Final row (wrong side): Ch 1, * sc in each of next 11 sts, tacking sc in next st; repeat from * to last 12 sts, sc in each of last 12 sts. Fasten off.

Rotate piece 180 degrees. With right side facing, join yarn with a slip st at beginning of foundation row and work as follows:

Row 1 (right side): Ch 1, sc in each of next 5 sts, tacking sc in next st, * sc in each of next 11 sts, tacking sc in next st; repeat from * to last 6 sts, sc in each of last 6 sts. Fasten off.

FINISHING

With right sides up, match edges as shown in seaming diagram; pin to hold. (Designer suggests using mini knit clips.) Seam edges together with whip st.

Designer Note: once the pieces are pinned in place, take a look and see if the poncho is the right size for you. You could even try it on at this point and see if you wish to make some additions to make the piece a little larger and more custom fit for you.

Add some extra length to the panels by working more rows (caution: adding too much length to the panels will make your neckline too big and the poncho will fall off your shoulders) as follows:

Raised Chevron Piece: undo the last double crochet row of stitching you completed then join your yarn on the last repeat row of the Raised Chevron Panel and only work 1 more full row repeat. Then, work the double crochet row again and fasten off.

Loopy st Piece: undo the final rows so that the loops are all free. Join your yarn to the last repeat row of the Loopy Chevron Panel and work as many 2 row repeats as necessary to match the new length of the Raised Chevron Panel. Then, rebraid where necessary, work the final rows again and fasten off.

And/or: after the seaming is complete, add a couple extra rounds of half double crochet (round 2 of the edging instructions) before doing the final round of the edging to get a little extra around the body. Make sure that you have the correct stitch multiple when indicated.

continued...



Sew pieces together with whip st along the edges that are highlighted red in the diagram. When matching up the Loopy st piece edge to the flat edge of the Raised Chevron don't leave any gaps, seam the full row of single crochet to the edge.



Bottom Edging

With right side facing, join yarn with a slip st in the first st to the left of a corner at bottom edge of Poncho.

Round 1: Ch 2 (does not count as a st here and throughout), * work in hdc evenly to corner, 3 hdc in corner st and mark center st of 3 hdc just made; repeat from * once more, join with slip st in top of beginning ch-2.

Be sure to end up with an even number of sts along each of the 2 edges, including corner sts.

Round 2: Ch 2, * hdc in each st to marked st, 3 hdc in marked st; repeat from * once more, hdc in last hdc, join with slip st in top of beginning ch-2.

Round 3: Ch 1, * sc in next st, MD in next st; repeat from * around, join with slip st in first sc. Fasten off.

Designer Note: If you decided to make your panels a bit longer, you may need to work a few extra sts on the first

round of the neck edging. Try to add as few sts as possible without puckering the fabric or creating large gaps. Keep track of how many extra sts you added, then place that many markers at top edge, evenly spaced around the neck. On the second row, simply skip all the marked sts to get back to the correct number of sts needed.

Shallow Cowl

With right side facing, join yarn with slip st anywhere along neck edge.

Round 1 (right side): Ch 2 (does not count as a st here and throughout), 108 dc evenly around neck edge, join with slip st in top of beginning ch-2 - 108 dc.

Round 2: Ch 2, * bpdC around next st, fpdc around next st; repeat from * around, join with slip st in top of beginning ch-2.

Round 3 (decrease round): Ch 2, * [bpdC around next st, fpdc around next st] 7 times, bpdC around next st, fpdc2tog over next 2 fpdc skipping the bpdC between them; repeat from * 5 more times, join with slip st in top of beginning ch-2 - 96 sts,

Rounds 4-12: Repeat Round 2.

Rounds 13-16: Ch 1, sc in each st around, join with slip st in first sc. Fasten off.

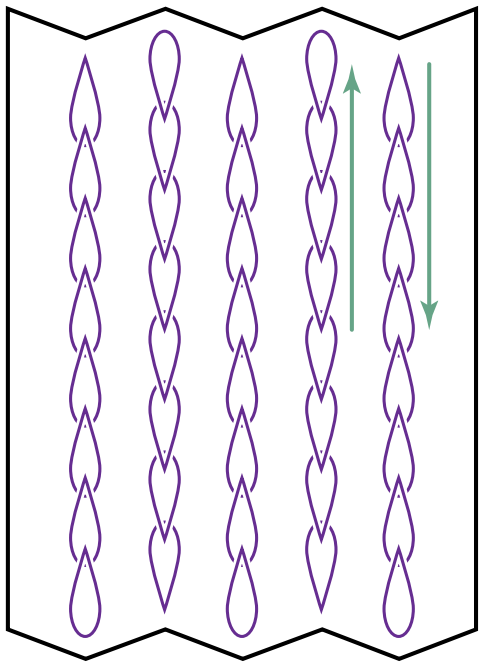
ABBREVIATIONS

ch = chain; **dc** = double crochet; **dec** = decrease; **hdc** = half double crochet; **sc** = single crochet; **st(s)** = stitch (es); **yo** = yarn over; **[]** = work directions in brackets the number of times specified; *** or **** = repeat whatever follows the * or ** as indicated.

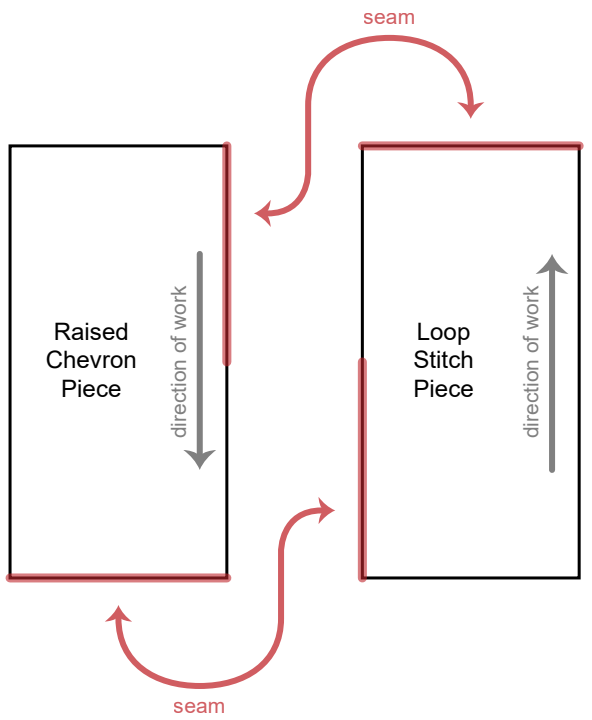
See next 2 pages for stitch charts and diagrams



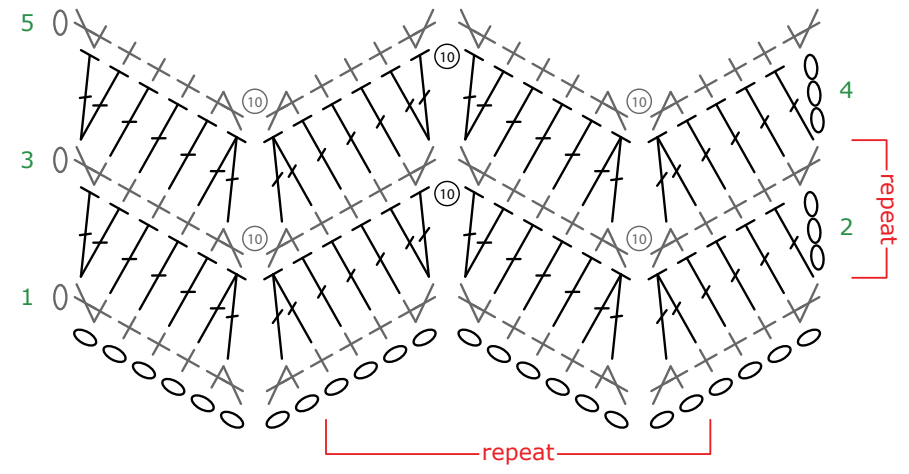
Loop Braiding Diagram



Poncho Seaming Diagram



Poncho Loop Stitch Chart



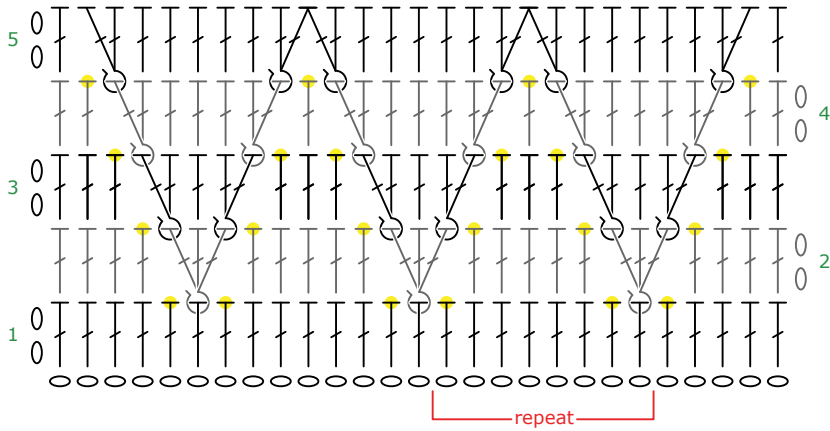
Symbol Key:

- Ch
- Ⓢ Ch 10
- +
- △ Sc2tog
- ┆ Dc
- ⌒ Dc2tog
- ┆ Fpdc on RS, bpdcc on WS
- ⌒ Bpdc2tog
- ┆ Skipped st

stitch charts and diagrams continued on next page



Raised Chevron Chart



Symbol Key:

- Ch
- ⓪ Ch 10
- + Sc
- △ Sc2tog
- ∣ Dc
- ∧ Dc2tog
- ∣ Fpdc on RS, bpdcc on WS
- ∧ Bpdc2tog
- ∣ Skipped st

Poncho Schematic

