



MATERIALS

Red Heart® With Love® (7 oz/198 g; 370 yds/338 m)

Small Bubble Gum (1704) **1 ball**

Large Sage (1631) **1 ball**

Size U.S. H/8 (5 mm) crochet hook **or size needed to obtain gauge.**
One 25-28mm diameter button.

 CROCHET | SKILL LEVEL: **EASY**

ABBREVIATIONS

Approx = Approximately

Ch = Chain(s)

Sc = Single crochet

St(s) = Stitch(es)

MEASUREMENTS

Approx **6 (7)**" [**15 (18)** cm] x **4 (4¾)**" [**10 (12)** cm].

GAUGE

14 sc and 15 rows = 4" [10 cm].

INSTRUCTIONS

BAG

Ch **16 (18)**.

Row 1: Sc in 2nd ch from hook, sc in each ch across, turn – **15 (17)** sc.

Row 2: Ch 1, 2 sc in first st, sc in each sc to last st, 2 sc in last st, turn – **17 (19)** sc.

Row 3: Ch 1, sc in each sc across. Turn.

Row 4 (buttonhole row): Ch 1, 2 sc in first st, sc in next **7 (8)** sts, ch 1, skip next sc, sc in next **7 (8)** sts, 2 sc in last st, turn – **19 (21)** sts.

Row 5: Ch 1, sc in each sc to ch-1 space, sc in ch-1 space, sc in each sc to end, turn – **19 (21)** sc.

Row 6: Ch 1, sc in each sc across. Turn.

Work even in single crochet until piece measures **10½ (11¾)** [**26.5 (30)** cm] from beginning. Fasten off. Weave in ends.

Belt Tabs (Make 2)

Leaving a long tail for sewing, ch **8 (9)**.

Row 1: Sc in 2nd ch from hook, sc in each ch across, turn – **7 (8)** sc.

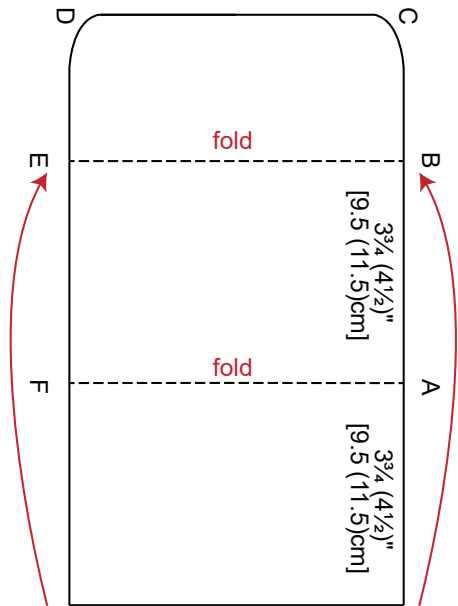
Row 2: Ch 1, sc in each sc across. Fasten off, leaving a long tail for sewing.

FINISHING

Referring to assembly diagram, fold lower section to back along fold line. Beginning at point A with a slip knot on the hook, single crochet through both layers; continue to work through both layers to point B; single crochet evenly along the edge to

point E, placing 2 sc in the corners at points C and D; sc through both layers to point F. Fasten off. Weave in ends.

Fold flap down along fold line. Pin belt tabs on back of bag approximately 1¼" [3 cm] from each side edge and ¼" [0.5 cm] from upper edge. Use long yarn tails to sew ends of tabs in place. Weave in ends. Sew button opposite buttonhole.



Front



Front



Back



Back

