



MATERIALS

Red Heart® Super Saver® (7 oz/198 g; 364 yds/333 m)
Contrast A Dusty Gray (0340) **1 ball**
Contrast B Soft White (0316) **1 ball**

Size U.S. I/9 (5.5 mm) crochet hook **or size needed to obtain gauge.**

 CROCHET | SKILL LEVEL: **EASY**

ABBREVIATIONS

Approx = Approximately

Ch = Chain(s)

Hdc = Half double crochet

St(s) = Stitch(es)

MEASUREMENTS

Approx 20" [51 cm] square and 10" [25.5 cm] deep.

GAUGE

12 hdc and 10 rows = 4" [10 cm]

Special Technique

Magic ring: Wrap yarn around your finger with the yarn tail to the left and under the working yarn. Insert hook through the circle from front to back. Yarn over using the working yarn and pull through loop; ch 1, release circle around finger gently. Work Round 1.

BAG

Middle Square (make 1)

With A, form magic ring. Alternatively, ch 4, slip st to first ch to form ring.

Round 1: Ch 2 (does not count as st here and throughout), [2 hdc in

ring, ch 2] four times, slip st in 2nd ch from beginning to join – 8 hdc.

Round 2: Slip st across to first ch-2 space, ch 2, [(hdc, ch 2, hdc) in ch-2 space, hdc across to next ch-2 space] three times, (hdc, ch 2, hdc) in ch-2 space, hdc across to beginning ch 2, slip st in 2nd ch from beginning to join – 16 hdc.

Rounds 3-5: Repeat Round 2 – 40 hdc.

Rounds 6-10: With B, repeat Round 2 – 80 hdc after Round 10.

Rounds 11-15: With A, repeat Round 2 – 120 hdc after Round 15.

Rounds 16-20: With B, repeat Round 2 – 160 hdc after Round 20.

Fasten off.

Edge Squares (make 2)

With A, form magic ring. Alternatively, ch 4, slip st to first ch to form ring.

Round 1: Ch 2, [2 hdc in ring, ch 2] four times, slip st in 2nd ch from beginning to join – 8 hdc.

Round 2: Slip st across to first ch-2 space, ch 2, [(hdc, ch 2, hdc) in ch-2 space, hdc across to next ch-2 space] three times, (hdc, ch 2, hdc) in ch-2 space, hdc across to beginning ch 2, slip st in 2nd ch from beginning to join – 16 hdc.

Rounds 3-5: Repeat Round 2 – 40 hdc.

Rounds 6-10: With B, repeat Round 2 – 80 hdc after Round 10.

Rounds 11-15: With A, repeat Round 2 – 120 hdc after Round 15.

Rounds 16-17: With B, repeat Round 2 – 136 hdc after Round 17.

Round 18: Slip st across to first ch-2 space, ch 2, [(hdc, ch 2, hdc) in ch-2 space, hdc across to next ch-2 space] two times, hdc in ch-2 space, ch 22, hdc in 3rd ch from hook and in next 19 ch, hdc in ch-2 space, hdc across to next ch-2 space, (hdc, ch 2, hdc) in ch-2 space, hdc across to beginning ch 2, slip st in 2nd ch from beginning to join – 164 hdc.

Round 19: Slip st across to first ch-2 space, ch 2, (hdc, ch 2, hdc) in ch-2 space, hdc across to next ch-2 space, (hdc, ch 2, hdc) in ch-2 space, hdc across to ch 20 from last row, hdc in bottom of each ch, (2 hdc, ch 2, 2 hdc) in side of ch, hdc in each hdc across other side of ch, hdc across to next ch-2 space, (hdc, ch 2, hdc) in ch-2 space, hdc across to beginning ch 2, slip st in 2nd ch from beginning to join – 194 hdc.

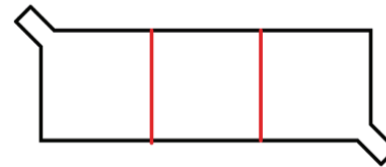
Round 20: Slip st over to first ch-2 space, ch 2, (hdc, ch 2, hdc) in ch-2 space, hdc across to next ch-2 space, (hdc, ch 2, hdc) in ch-2 space, hdc across to 20 hdc from last row, hdc in next 22 sts, 4 hdc in ch-2 space, hdc in next 22 hdc, hdc across to next ch-2 space, (hdc, ch 2, hdc) in ch-2 space, hdc across to beginning ch 2, slip st in 2nd ch from beginning to join – 204 hdc.
Fasten off.

FINISHING

Joining

Line up squares, referring to Diagram 1 for placement. Seam squares along the sides where the middle and edge squares meet (lined in red on diagram) using your favorite seaming method (e.g. whipstitch, locking mattress stitch).

Diagram 1



Fold fabric along red lines of Diagram 2. Seam squares along the two new sides where the middle and edge squares meet (lined in red and red dashes on Diagram 3).

Diagram 2

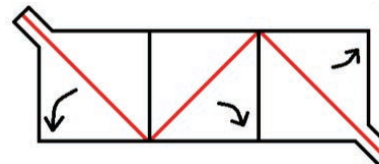


Diagram 3

