



MATERIALS

Peaches & Crème® (2.5 oz/70.9 g; 120 yds/109 m)

Contrast A Ecu (11006)

1 ball or 43 yds/39 m

Contrast B Black (11040)

1 ball or 43 yds/39 m

Size U.S. 7 (4.5 mm) knitting needles **or size needed to obtain gauge.** Tapestry needle. Stitch holder.



KNIT | SKILL LEVEL: **INTERMEDIATE**

ABBREVIATIONS

Approx = Approximately

Beg = Begin(ing)

Cont = Continue(ity)

K = Knit

K2tog = Knit next 2 stitches together

Rem = Remaining

RS = Right side

Ssk = Slip next 2 stitches knitwise one at a time. Pass them back onto left-hand needle, then knit through back loops together

St(s) = Stitch(es)

WS = Wrong side

MEASUREMENT

Approx 8" [20.5 cm] square, excluding ears.

GAUGE

20 sts and 26 rows = 4" [10 cm] in stocking stitch.

INSTRUCTIONS

Note: When working from chart, wind separate balls of each color to be used. When changing colors, wind 2 colors around each other where they meet, on WS, to avoid a hole.

With A, cast on 41 sts.

Work rows 1 to 50 of Chart, (see page 2) *reading RS rows from right to left and WS rows from w to right.*

Do not cast off.

First Ear: 1st row: (RS). With B, K12. Slip these 12 sts just knit onto a st holder. Cast off next 17 sts. Knit to end of row. 12 sts rem.

****2nd row:** K2tog. K8. ssk. 10 sts.

3rd row: ssk. K6. K2tog. 8 sts.

4th row: K2tog. K4. ssk. 6 sts.

5th row: ssk. K2. K2tog. 4 sts.

6th row: K2tog. ssk. 2 sts.

Fasten off through last 2 sts, leaving a long end. Weave in end securely.**

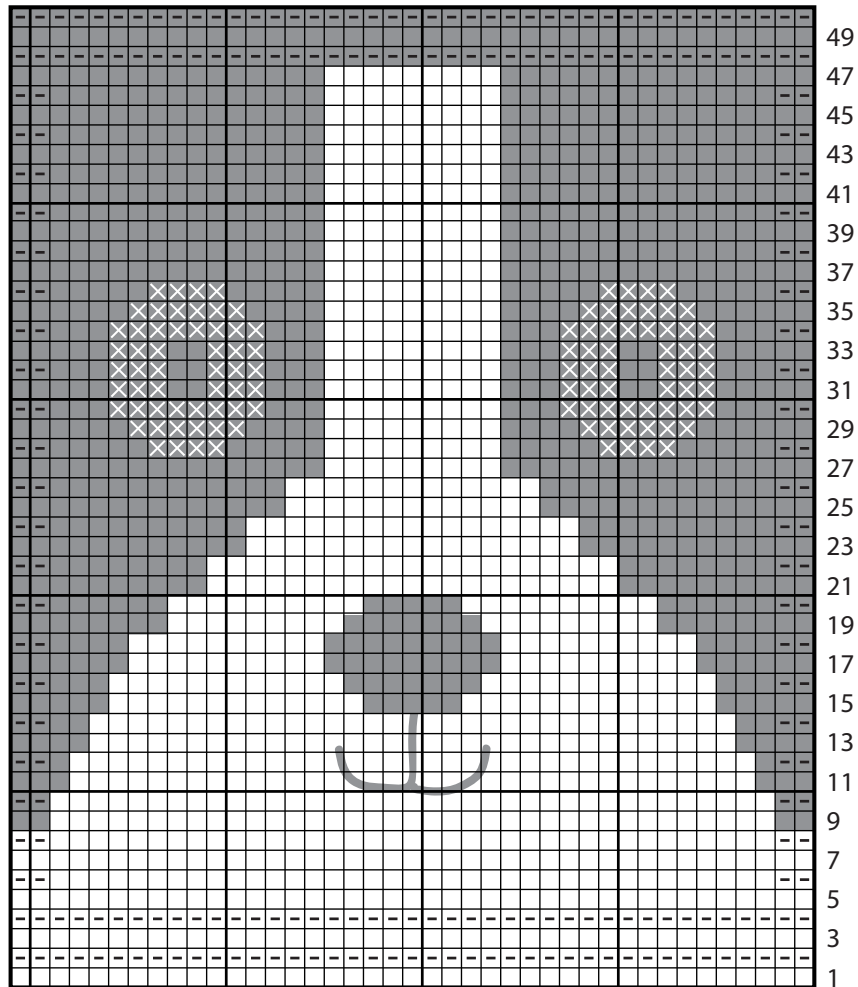
Second Ear

With WS facing, join B to first 12 sts on st holder.

Work from ** to ** as given for First Ear.

FINISHING

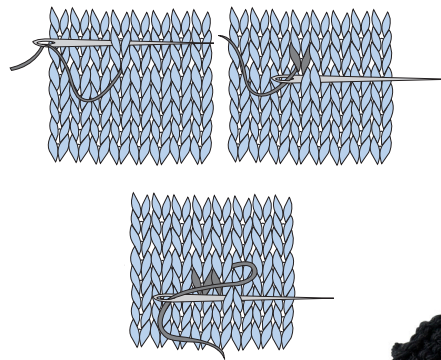
With A, work duplicate st eyes using Chart as a guide. With B, embroider mouth using straight st.



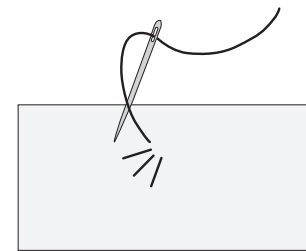
49
47
45
43
41
39
37
35
33
31
29
27
25
23
21
19
17
15
13
11
9
7
5
3
1

Start Here

Duplicate Stitch



Straight Stitch



Key

- = With A, knit on RS rows. Purl on WS rows.
- ▣ = With A, purl on RS rows. Knit on WS rows.
- = With B, knit on RS rows. Purl on WS rows.
- ▣ = With B, purl on RS rows. Knit on WS rows.
- ⊠ = With A, duplicate stitch.