



Katherine Poole-Fournier
Designer



KNIT | SKILL LEVEL: EASY

ABBREVIATIONS

Alt = Alternate(ing)

Approx = Approximately

Beg = Beginning

K = Knit

K2tog = Knit next 2 stitches together

M1L = Make 1 stitch by picking up horizontal loop lying before next stitch from front to back and knitting into back of loop

M1R = Make 1 stitch by picking up horizontal loop lying before next stitch from back to front and knitting into front of loop

P = Purl

Pat = Pattern

PM = Place marker

Rep = Repeat

Rnd(s) = Round(s)

Sl1Pwyib = Slip next stitch purlwise with yarn in back of work

SM = Slip marker

Ssk = Slip next 2 stitches knitwise one at a time. Pass them back onto left-hand needle, then knit through back loops together

St(s) = Stitch(es)

MATERIALS

Patons® Classic Wool Worsted™ (3.5 oz/100 g; 194 yds/177 m)

Contrast A Soft Orchid (77779) **1 ball or 80 yds/73 m**

Contrast B Duck Egg Blue (77766) **4 balls or 757 yds/692 m**

Contrast C Rich Raspberry (77783) **1 ball or 85 yds/78 m**

Set of 4 sizes U.S. 6 [4 mm] and U.S. 7 [4.5 mm] Susan Bates® Silvalume® double-pointed knitting needles **or size needed to obtain gauge.** Susan Bates® yarn needle. Susan Bates® stitch markers.

MEASUREMENTS

Approx 8½" x 72" [21.5 x 183 cm].

GAUGE

20 sts and 26 rows = 4" [10 cm] in stocking st with larger needles.

INSTRUCTIONS

Note: Slipped stitches are used every alt rnd in stocking st section to form side "seams" that will help the scarf to lie flat.

With A and smaller double-pointed needles, cast on 72 sts. Divide sts evenly onto three needles. Join in rnd. PM for beg of rnd.

1st rnd: *K2. P2. Rep from * around. Rep 1st rnd until work from beg measures 5" [12.5 cm].

With B and larger double-pointed needles, proceed as follows:

Set up rnd: K18. PM. K36. PM. Knit to end of rnd.

Proceed with increases as follows:

1st rnd: (Knit to next marker. SM. Sl1Pwyib) twice. Knit to end of rnd.

2nd rnd: Knit.

3rd rnd to 6th rnds: Rep 1st and 2nd rnds twice.

7th rnd: (Knit to 1 st before next marker. M1R. K1. SM. Sl1Pwyib. K1. M1L) twice. Knit to end of rnd. 76 sts.

8th rnd: Knit.

Rep last 8 rnds twice more. 84 sts.

1st rnd: (Knit to next marker. SM. Sl1Pwyib) twice. Knit to end of rnd.

2nd rnd: Knit.

Rep last 2 rnds until work from beg measures 63" [160 cm].

Beg working decreases as follows:

1st rnd: (Knit to 3 sts before next marker. K2tog. K1. SM. Sl1Pwyib. K1. ssk) twice. Knit to end of rnd. 80 sts.

2nd rnd: Knit.

3rd rnd: (Knit to next marker. SM. Sl1Pwyib) twice. Knit to end of rnd.

4th to 7th rnds: Rep 2nd and 3rd rnds twice.

8th rnd: Knit.

Rep last 8 rnds twice more. 72 sts.

With C and smaller needles, proceed as follows:

1st rnd: Knit.

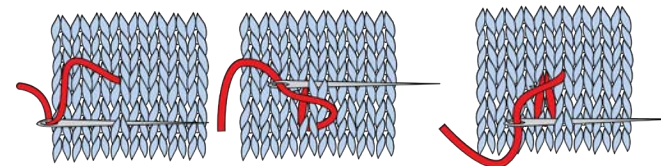
2nd rnd: *K2. P2. Rep from * around.

Rep last rnd until ribbing measures 5" [12.5 cm]. Cast off in ribbing.

Monogram

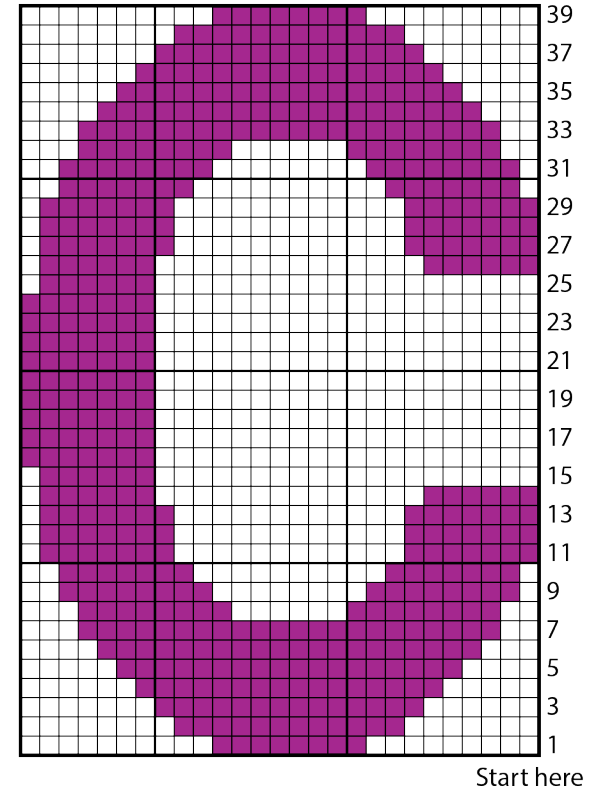
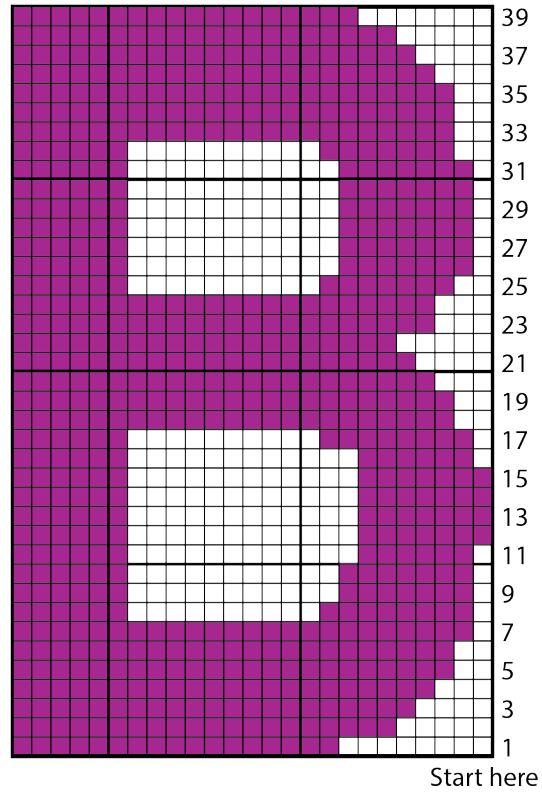
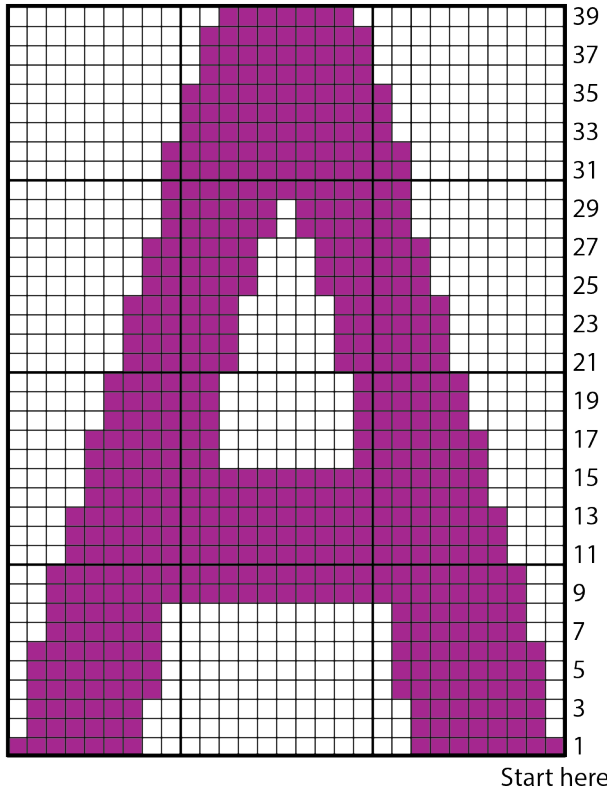
Note: Duplicate stitch will be worked on 'front' side of Scarf; join in rnd is found on 'back' side of Scarf.

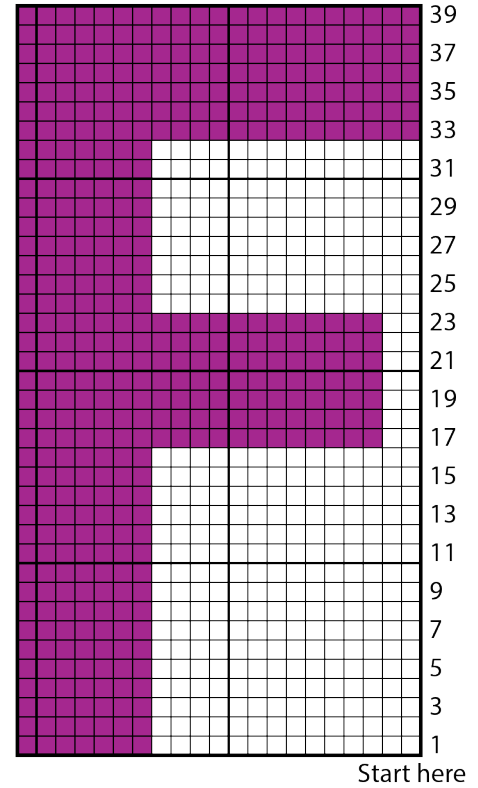
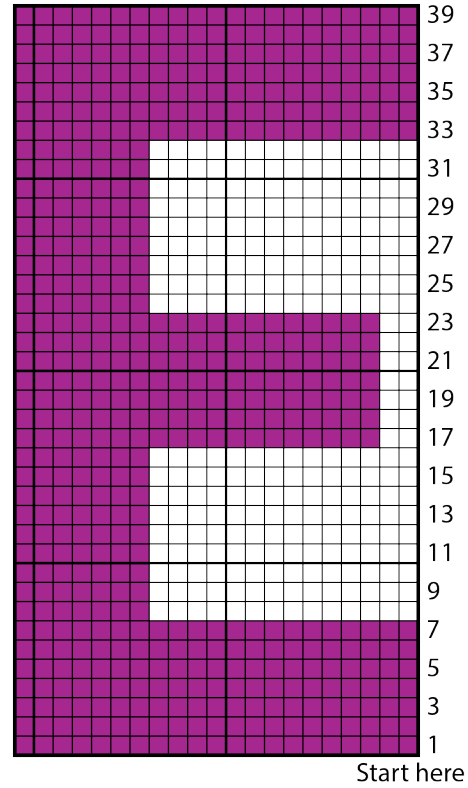
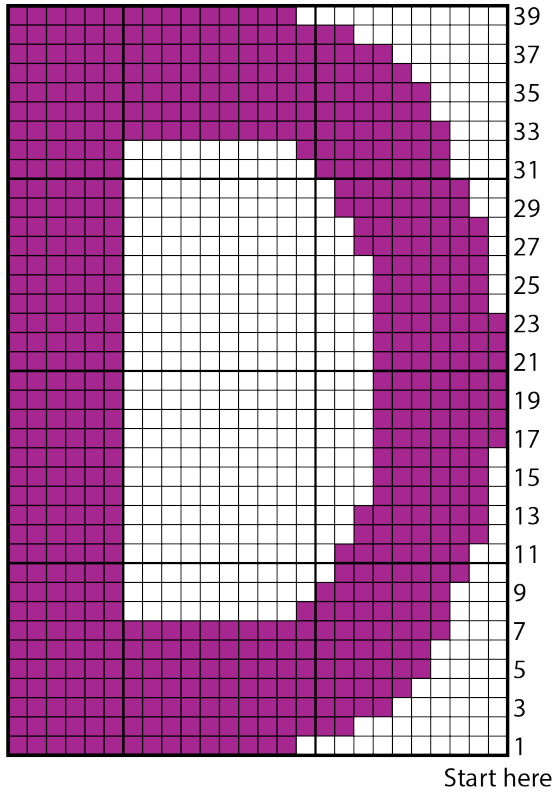
With C, work monogram in duplicate st embroidery on Front of Scarf, beg 4" [10 cm] above ribbing on cast-on side (above section worked in A) and taking care to center Monogram on front of Scarf. (See charts on pages 3-10).

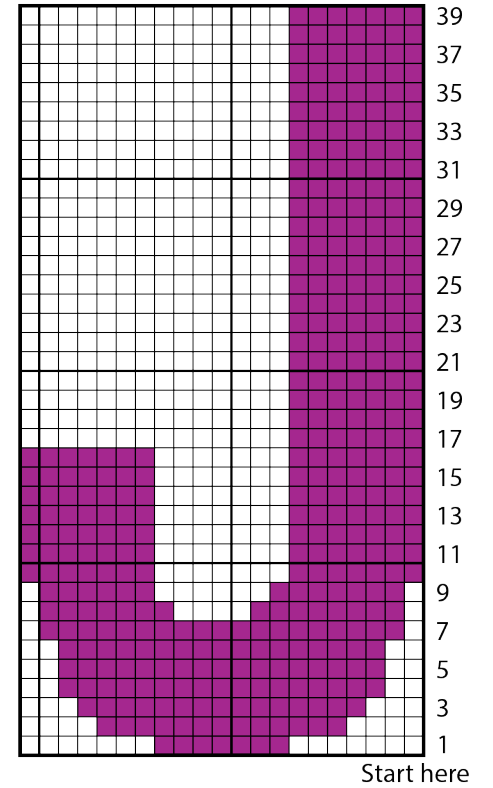
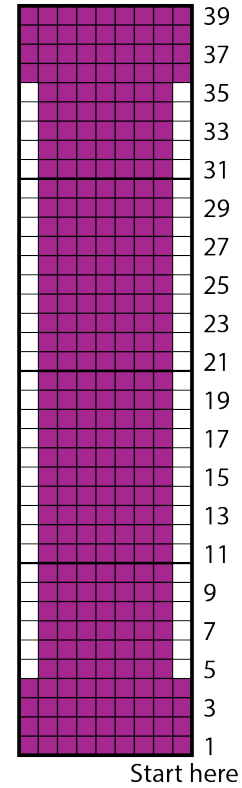
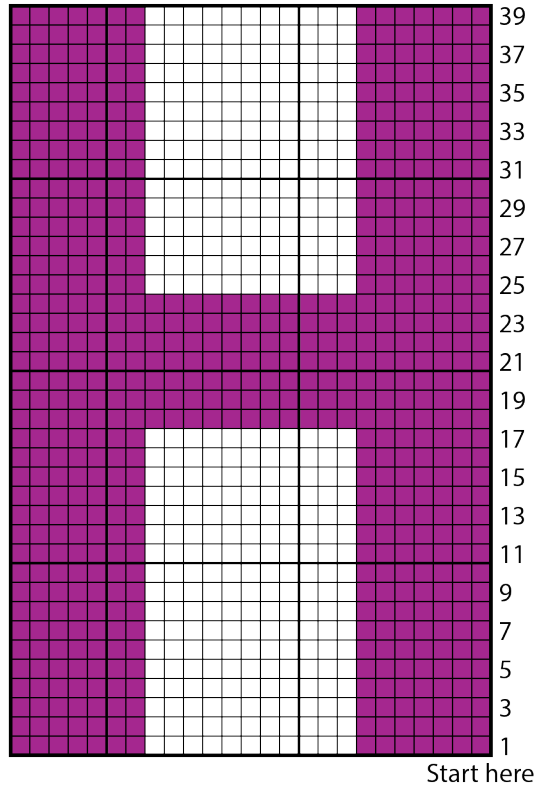
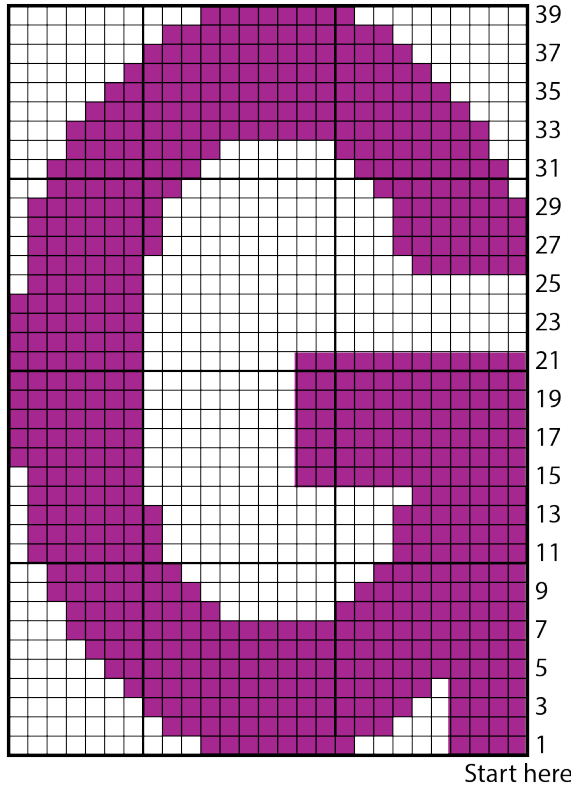


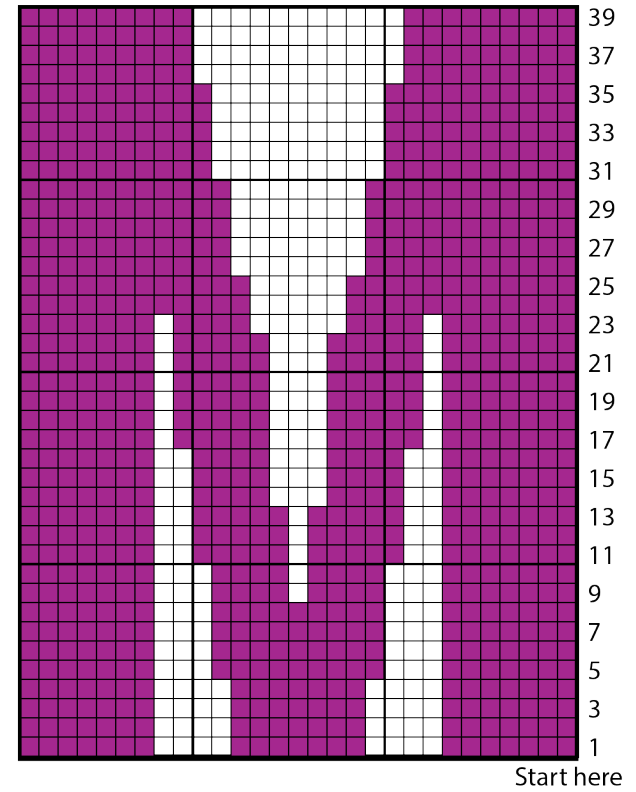
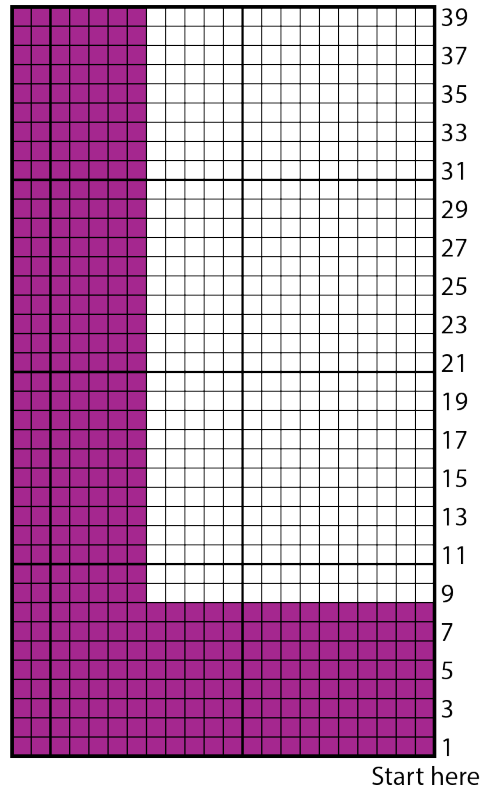
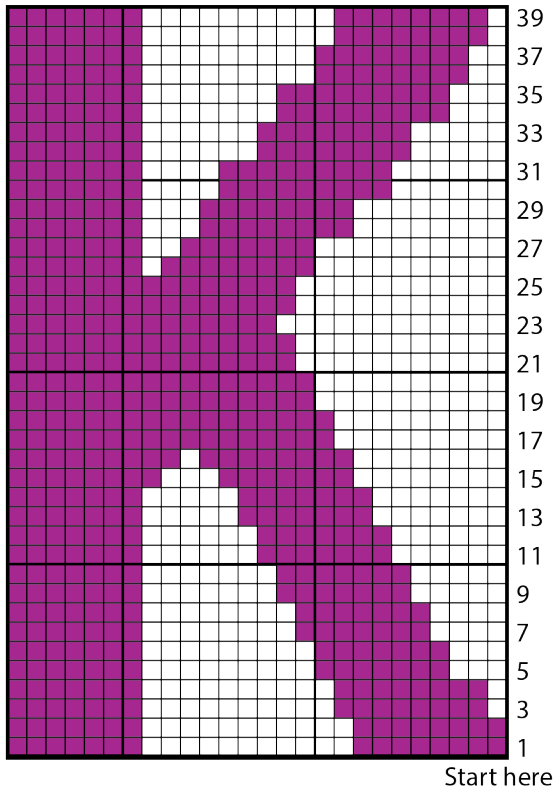
DUPLICATE ST DIAGRAM

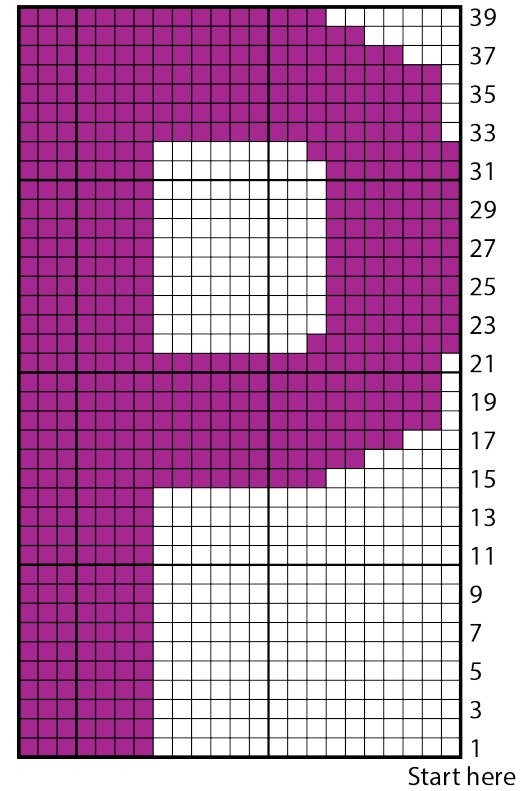
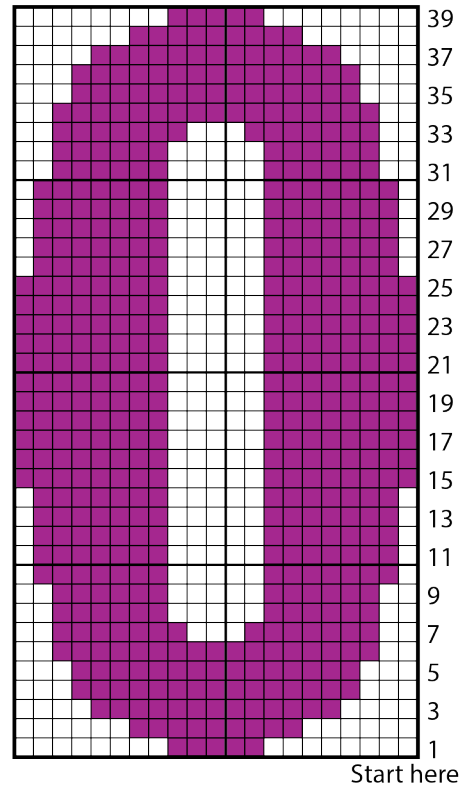
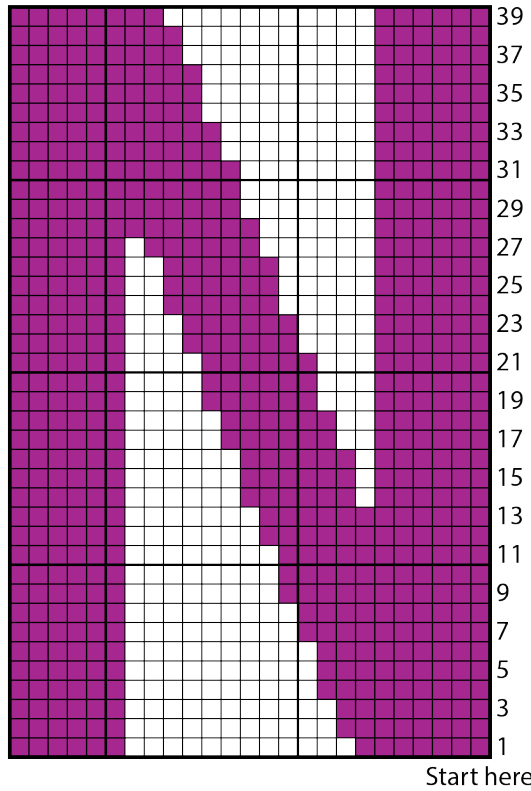


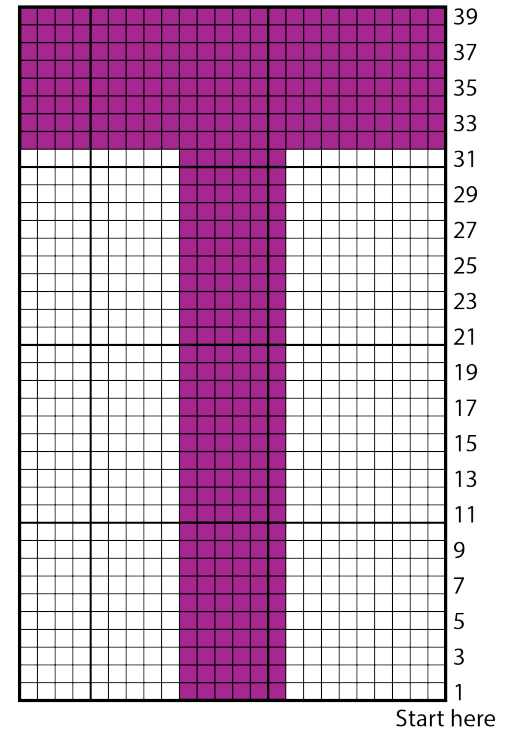
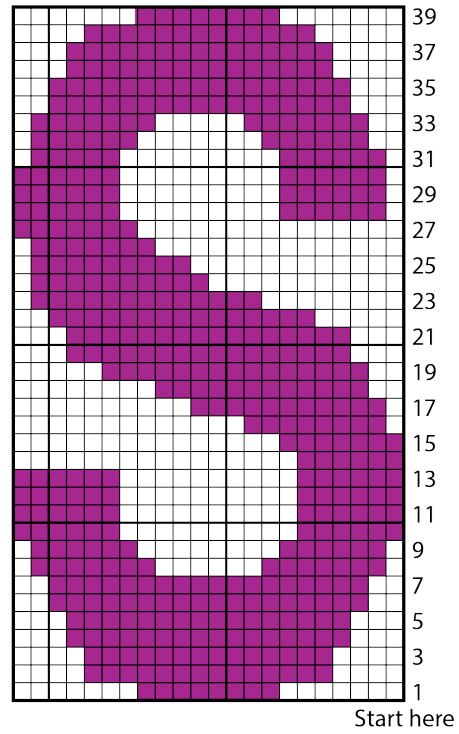
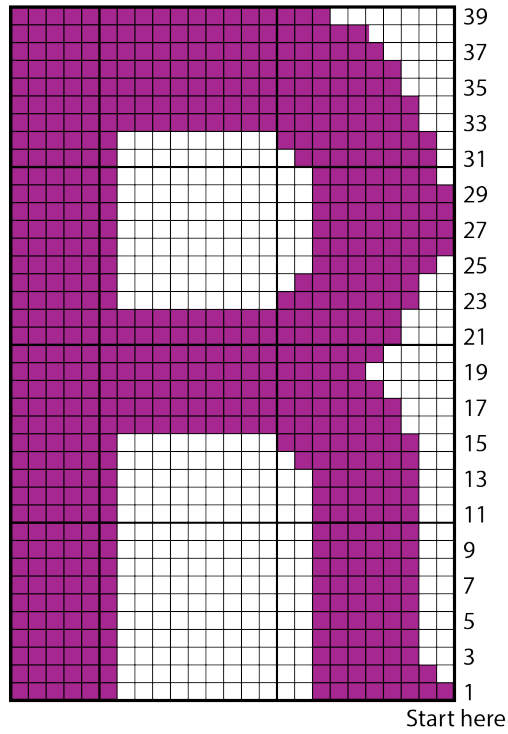
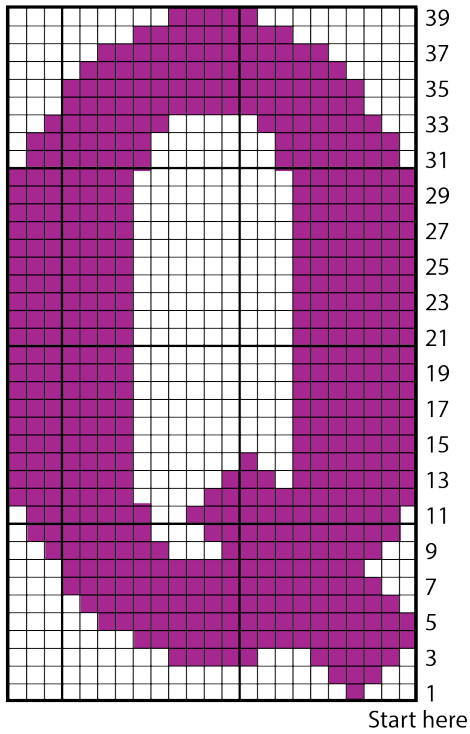


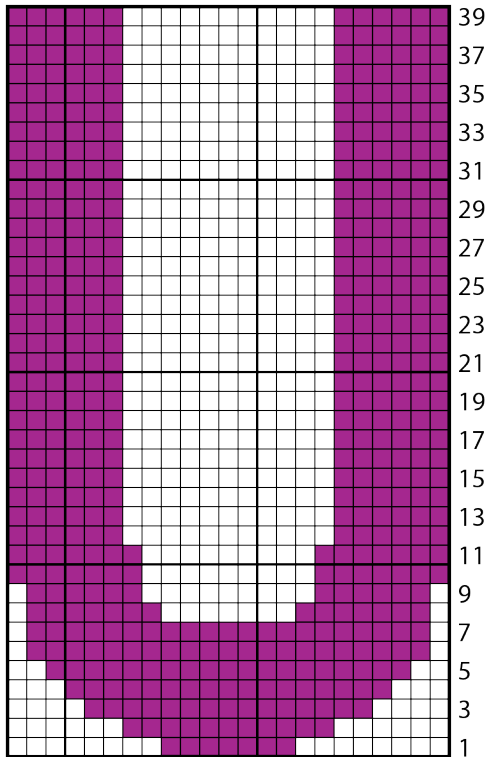




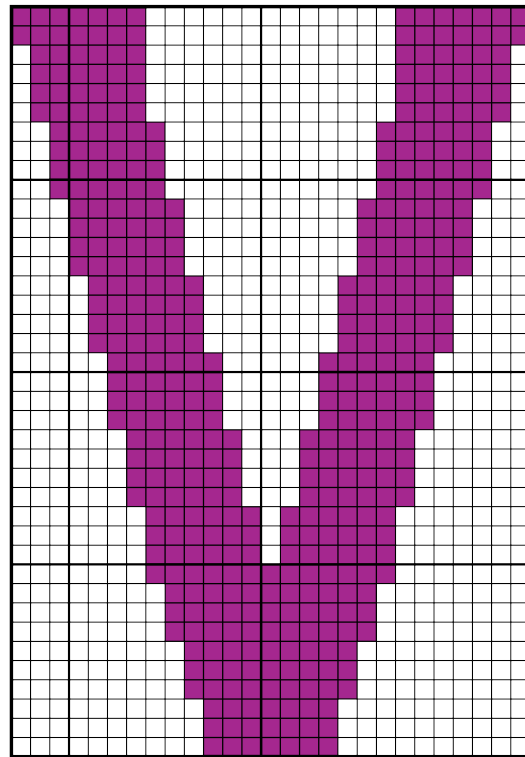




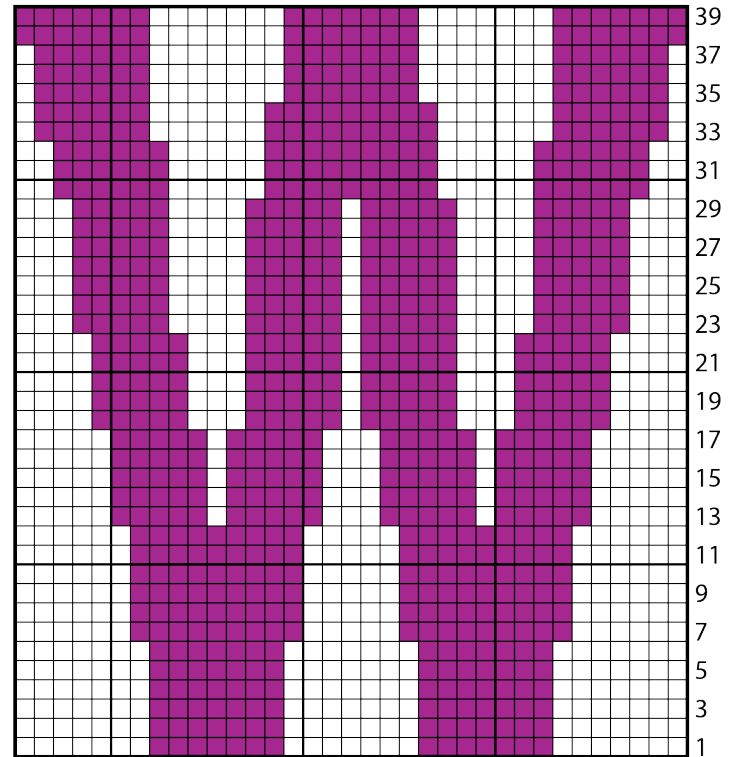




Start here



Start here



Start here

